



Member Highlights | Dairy News | Industry Events

Member Highlight **CUTTING-EDGE GENETICS**

Located just south of Chicago in Chebanse, Illinois, Cutting Edge Genetics began in 2017 with a goal to find the missing pieces in genetic progress and make the world a more sustainable place by offering efficient genetics to the commercial market. CEG got its start when the current owners attended a presentation at the University of Illinois focused on using agricultural sciences to better feed the world through technology. The opportunity arose to take over the existing facility that was once Butlerview Farms, and the rest is history.

Cutting Edge Genetics has the ability to house and milk 30 cows in a box stall barn, as well as facilities to house around 400 heifers. The main focus in their program is to produce large volumes of high genomic embryos for commercial clientele. They secure their donors through purchase or lease and have been able to work with world class farms to gain access to their genetics including Siemers Holsteins, Peak Genetics, and Winstar Genetics. Aiming to gain donors that excel on traits that are important to their clients, Cutting Edge looks at many traits including, but not limited to, Daughter Pregnancy Rate (DPR), Sire Calving Ease (SCE), Pounds of Milk, Feed Efficiency (FE), and Net Merit (NM).



1515 Livingstone Road, Suite B, Hudson, Wisconsin 54016, USA

info@holsteinplaza.com | holsteinplaza.com

Phone: +1 715-808-8653 | Fax: +1 715-808-8564

2020

October Newsletter

October Intermediate Proof

Top 5 GTPI New Genomic Females

1. TTM BK LEGACY 1847

Legacy x Kenobi x Achiever

+3044 GTPI

Mercuro Farms

2. FB452138 ROYAL 681927-ET

Royal x Jared x Matters

+3032 GTPI

Faria Brothers Dairy

3. COOKIECUTTER HJ

HULAHOO-ET

Highjump x Achiever x Flagship

+3031 GTPI

Cookiecutter Holsteins

4. FB 456042 ROYAL 677848-ET

Royal x Jared x Burley

+3027 GTPI

Faria Brothers Dairy

5. CHERRYPENCOL Z LINDY-ET

Zasberilla x Legacy x Jedi

+3019 GTPI

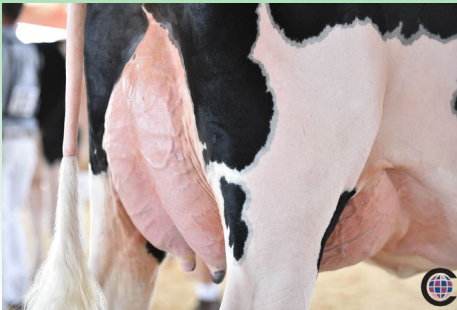
Pen-Col Farms & Hembury Farms

View all top ranking lists on
holsteinplaza.com/top-genetics

Pictured Left: The Farm at
Cutting Edge Genetics
Chebanse, IL



NEW DONOR at Brigeen Farms



Pictured: Apple-Pts Amita-ET
Dam of Golden-Oaks Surge Athena

Brigeen Farms has updated their donor listings to include Golden-Oaks Surge Athena-ET, the highest PTA Type daughter of Apple-Pts Amita VG-89 90-MS. Athena scores +3.11 PTAT +2.61 UDC, AND +2.18 FLC.

View Athena's Donor Profile [HERE](#).

Member Highlight continued...

One thing they are very proud of at CEG is their experienced team and the care they are able to give to the animals and their genetic program. It is with this team that they were able to produce over 1000 conventionally made sexed embryos in a 6-week period with an average of 7 #1 grade embryos during that time! Cutting Edge Genetics is only in their beginning stages and is looking forward to the future to see what successes they can create for their clients.

To learn more about Cutting Edge Genetics, visit their breeder page at HolsteinPlaza.com/Cutting-Edge-Genetics.



Pictured Above: The Heifer Barn at Cutting Edge Genetics

Pine-Tree Dairy Updates Website



Pine-Tree Dairy has updated their website. Updates on their Holstein page include embryos for sale, sale consignments, donors available for EX/IVF purchase, and several Red & White opportunities. Their Jersey and Brown Swiss pages also have sale consignments added. Pine-Tree has also added a list of their bulls at Stud for your review.

View their website [HERE](#).

Mercuro Farm Wins at MD State Fair



Rae-Mew Unstop Rosey-Red was the winning winter calf and took the Junior Champion title of the MD State Fair R&W Show. Congratulations, Mercuro Farms!

View their breeder page [HERE](#).

Farnear-TBR Aria Adler Wins Again!



Farnear-TBR Aria Adler was named Senior, Grand Champion and Best Bred & Owned of the Southern Fall National Holstein Show. Congratulations, Farnear Holsteins

View their breeder page [HERE](#).

1515 Livingstone Road, Suite B, Hudson, Wisconsin 54016, USA

info@holsteinplaza.com | holsteinplaza.com

Phone: +1 715-808-8653 | Fax: +1 715-808-8564

Oakfield Corners Finds Success at New York State Shows



Holstein Show Highlights:

Oakfield WB Tiffany
1st 5-Year-Old
Senior & Grand Champion

Oakfield Solom Footloose
1st Junior 3-Year-Old
Reserve Intermediate Champion

Oakfield Reality Harmony
1st 150,000 lb Cow

Oakfield Doorm Brilliant
1st Senior 2-Year-Old

Ms Abba Amazing 2319
1st Junior 2-Year-Old

Oakfield Undenied Eclair
1st Summer Junior 2-Year-Old

Reserve Junior Best Three Females

Red & White Show Highlights:

Oakfield Addiction Emoji-Red
1st 4-Year-Old
Senior & Reserve Grand Champion

Oakfield-Sis Al Rosebud-Red
1st Spring Calf
Reserve Junior Champion of the
Junior Show

Oakfield Us Aviva-Red
1st Winter Calf
HM Junior Champion

Junior Best Three Females

View a full list of highlights [HERE](#).

Our-Favorite Unlimited Earns 3rd Consecutive Nomination for Global Impact Cow of the Year



Our-Favorite Unlimited has earned her third consecutive nomination for Holstein International's Global Impact Cow of the Year Award. Just fresh in June, Unlimited is off to a great start at 9-Years-Old.

As they say, the third time's the charm ...VOTE UNLIMITED for HI Global Impact Cow of the Year!

Bright Futures II Sale Averages \$2,955 on 67 Lots



The sale featured embryos, donor cows, and a few choice lots with several breeds represented including Holsteins, Brown Swiss, Jerseys, and Red and Whites.

The high seller was Lot 3 at \$9,500, Kevetta Rdbrst Lucious-Red EX-94 purchased by Elmer Fisher of Elizabethville, PA.

The second high seller was an offering of five Jersey embryos sired by Premier out of Arethusa Response Vivid EX-96 with a winning bid of \$1,700 per embryo by David Jordan.

The sale grossed \$198,000 with an average of \$2,955 on 67 lots.

Timber-Red Finds Success with New Owners!



The new owners of Ms Stranshome Timber-Red-ET are thrilled with how she has been developing over the last year. She was purchased on the Stranshome Last Luau Sale hosted through Holstein Plaza in August of 2019. Timber-Red is now scored EX-92! She calved in July with an Unstopabull heifer calf and will be flushed this Fall.

1515 Livingstone Road, Suite B, Hudson, Wisconsin 54016, USA

info@holsteinplaza.com | holsteinplaza.com

Phone: +1 715-808-8653 | Fax: +1 715-808-8564

Selling Now on the Holstein Plaza Online Embryo Auction . . .

Elite RZG

Lot 15: BENNY x
Comfort Thrlr DLX Robin



Three #1 grade BENNY (+2781GTPI +656NM\$ +1691MILK | +165gRZG) embryos from the No. 1 gRZG daughter of DELUXE. Robin goes back to Shottle May and scores a tremendous +156RZG, +130RZN, +126 RZS, and +118RZE. Bid now on this offering with ELITE RZG and TREMENDOUS PRODUCTION POTENTIAL!

Current Price: \$1,475 USD/Embryo
View this offering [HERE](#)

Backed By EX-94 Chief Adeen

Lot 7: GOLDWYN x
KY-Blue SS Dina



Seven #1 grade GOLDWYN (+0.98PTAT +0.55UDC +0.83FLC) embryos from the beautiful September Storm daughter KY-Blue SS Dina. Dina is scored EX-92 and out of the EX-92 Outside daughter of the one and only Ms Kingstead Chief Adeen EX-94 DOM! Make the next high type offspring from this tremendous cow family.

Current Price: \$475 USD/Embryo
View this offering [HERE](#)

Lot 8: ATWOOD x
KY-Blue SS Dina



Seven #1 grade ATWOOD (+2.98PTAT +1.70UDC +2.17FLC) embryos from the beautiful September Storm daughter KY-Blue SS Dina. Dina is scored EX-92 and out of the EX-92 Outside daughter of the one and only Ms Kingstead Chief Adeen EX-94 DOM! Make the next high type offspring from this tremendous cow family.

Current Price: \$375 USD/Embryo
View this offering [HERE](#)

Lot 1: SEXED ALTITUDE-RED x
Ms D Angel Denisha RC



Four #1 grade IVF LUCID-RED (+2743GTPI +641NM\$ +1.77UDC) embryos from the stylish RED Mark RC daughter to the former No. 2 GTPI RC Female in the world, Parkhurst Modesty Samarie VG-85. Samarie was the second high seller in the 2017 Sale of Stars and is the dam of 200HO11817 Showy-Red and 7HO15314 Sam-Red. Bid last and make the next high RED BULL from this tremendous donor.

Current Price: \$1,275 USD/Embryo
View this offering [HERE](#)

Red Embryos

Lot 4: IVF SEXED AWESOME-RED x
Willowhaven Goldwyn Bliss RC



Five #1 grade IVF SEXED AWESOME-RED (+2.08PTAT +3.30UDC +0.85FLC) embryos from the beautiful Goldwyn daughter who goes back to Unanimous All-American and All-Canadian female, EX-95 Rainyridge Talent Barbara.

Make the next full sister to... Garay Awesome Beauty VG-88 OR the next Maternal sister to... Garay Doorman Blind Date VG-88

Current Price: \$925 USD/Embryo
View this offering [HERE](#)

Lot 5: IVF LUCID-RED x
Pine-Tree 7959 M8395-Red



Four #1 grade IVF LUCID-RED (+2743GTPI +641NM\$ +1.77UDC) embryos from the stylish RED Mark RC daughter to the former No. 2 GTPI RC Female in the world, Parkhurst Modesty Samarie VG-85. Samarie was the second high seller in the 2017 Sale of Stars and is the dam of 200HO11817 Showy-Red and 7HO15314 Sam-Red. Bid last and make the next high RED BULL from this tremendous donor.

Current Price: \$775 USD/Embryo
View this offering [HERE](#)

1515 Livingstone Road, Suite B, Hudson, Wisconsin 54016, USA

info@holsteinplaza.com | holsteinplaza.com

Phone: +1 715-808-8653 | Fax: +1 715-808-8564

Auction Ends Thursday,
October 8th at 4:00 p.m EST
SALE.HOLSTEINPLAZA.COM

Tremendous PTAT

Lot 14: BOOM x
Our-Favorite Compelling



ADDED LOT: Five #1 grade BOOM (+3.54PTAT +2.29UDC +1.78FLC) embryos from the VG-88 Hang-Time daughter with +2.73PTAT direct from UNLIMITED. Here is your opportunity to create the next No. 1 PTAT male or female from this TYPE DOMINATING family!

Current Price: \$575 USD/Embryo
View this offering [HERE](#)

Backed By

EX-96 GOLD BARBARA

Lot 2: SEXED UNIX x
Gold-Barbara Bernadette



Two #1 grade SEXED UNIX (+2.37PTAT +2.46UDC +6.7%SCE) embryos from the EX-90 Solomon daughter of the 2019 WDE Grand Champion Holstein, EX-96 3E Butz-Butler Gold Barbara. Barbara is a 4x All-American female in milking form. This is a pedigree that continues to make the great ones from Barbie to Brasilia to Gold Barbara and now Bernadette!

Current Price: \$925 USD/Embryo
View this offering [HERE](#)

Share your event details with thousands of industry members across North America. Contact us today to have your event added to our monthly newsletter and advertised on our website!

Industry Events

Sept. 29-Oct. 8

Oct. 1-8
Oct. 2
Oct. 3
Oct. 3
Oct. 5
Oct. 5
Oct. 5
Oct. 6
Oct. 6
Oct. 6
Oct. 6-7
Oct. 7
Oct. 10
Oct. 11-21
Oct. 11
Oct. 15
Oct. 16
Oct. 16-17
Oct. 16

Heart of America Southwestern National Brown Swiss Show

Oct. 16-22

Oct. 17
Oct. 22-24
Oct. 24

Oct. 30-Nov. 5

Oct. 31
Nov. 3

Nov. 6-14

Nov. 7
Nov. 8
Nov. 8
Nov. 9
Nov. 9

Nov. 13-19

Nov. 13
Dec. 1

Dec. 4-10

Holstein Plaza Online Embryo Sale

North American Dairy Cattle Show

Autumn Harvest at Hilltop

NCAFA Dairy Fall Classic

Eastern Breeders Sale

North American Open R&W Show

Ontario Fall Invitational Jersey Show

Fall Invitational Sale 2020

North American Open Jersey Show

Ontario Fall Invitational Holstein Show

Official Genetic Evaluation Release

Virtual AETA Annual Convention

North American Open Holstein Show

Best of the West 2.0 Sale

Northeast All-Breeds Fall Show

Missouri State Holstein Show & Futurity

Northeast MO Production Sale

Heart of America Sale

New York Breeders Sale

Holstein Plaza Online Embryo Auction

Atlantic Dairy Championship Show

Westerner Dairy Showcase

Nittany Lion Fall Classic Sale

Holstein Plaza Online Embryo Auction

NY Premier Fall All-Breeds Show

Official Genetic Evaluation Release

Holstein Plaza Online Heifer Sale

Pot O' Gold Sale

National Jersey Jug Futurity

All-American Jersey Sale

Mid-East Fall National Holstein Show

All-American Jersey Show

Holstein Plaza Online Embryo Auction

Genosource Fall Fiesta Sale

Official Genetic Evaluation Release

Holstein Plaza Online Embryo Auction



SPECIAL OFFER FOR HOLSTEIN PLAZA MEMBERS ONLY!
Now all HP Members will automatically receive 20% off retail price when ordering semen with AI Total US. Become a member today and take advantage of all our membership perks!

1515 Livingstone Road, Suite B, Hudson, Wisconsin 54016, USA

info@holsteinplaza.com | holsteinplaza.com

Phone: +1 715-808-8653 | Fax: +1 715-808-8564