

Braedale Gypsy Grand

➔ Premier Canadian Cow Family with Global Impact

Sale catalogs, Holstein articles and breeder ads worldwide feature the industry's elite with Gypsy Grand deep in the heart of the pedigree whether on the topside or bottom side. The impact of this tremendous brood cow family has already been seen for several generations and nearly two decades. But with the great young cows that keep emerging and promising young Goldwyn sons getting their first proof I think it is safe to say the impact of this great Holstein family is far from over.

The Beginning

While we will work our way forward from Gypsy Grand it is important to highlight that the pedigree doesn't start there. Behind the Aerostar dam of Gypsy Grand are five more generations Very Good carrying the Sunnylodge prefix with a total of 54 Stars. The Aerostar, Braedale Moonriver Good Plus-83-3YR-JPN, was sold and boarded ship to Japan as a young cow but left behind a heifer calf by Mark CJ Gilbrook Grand named Braedale Gypsy Grand. The 2003 Canadian Cow of the Year, Gypsy Grand, was scored Very Good-88-5YR-CAN with a total of 37 Stars and two Excellent, 18 Very Good, 22 Good Plus and four Good daughters.

"Gypsy Grand was just fresh as a two-year-old when I started working as a sire analyst in 1995. She was my first cow contracted at Braedale and I got lucky this great family was in my territory. She produced good daughters and sons every flush. Today the two branches that are most prominent trace back to her two Storm daughters, Baler Twine and Second Cut," shared Julien Chabot, Sire Analyst, Semex.

Baler Twine

A second generation Canadian Cow of the Year honoree, Baler Twine

has 32 Stars of her own and the admired dam to the industry's great Goldwyn. She is Very Good-86-2YR-CAN with four Excellent daughters, 14 Very Good, seven Good Plus and just two Good. Truly the complete package brood cow her offspring have excelled in production, show ring type and genomics.

With so many high scoring, high impact daughters it is hard to focus on just one but there is no doubt that the mating of Champion on this Maughlin Storm daughter was a homerun. Gen-I-Beq Champion Bally Excellent-95-CAN 4 Star is the highest scored daughter of Baler Twine and was the Reserve All-Canadian Junior Three-Year-Old in 2007. Bally's daughter by Duplex, Gen-I-Beq Duplex Balsamy, Very Good-87-2YR-CAN is the former #1 type cow in Canada. Overall the mating of Duplex worked well on Champion Bally producing a total of five Very Good daughters.

The #3 GPA-LPI heifer in Canada following the April proof run traces back to Baler Twine through Gen-I-Beq Champion Bambi, a full sister to Bally and scored Excellent-90-CAN 3 Star. OConnors Snowman Bermuda has a GPA-LPI of +3695 and is currently being worked with at Mapel Wood Holsteins. She is the daughter of Gen-I-Beq ManOMan Bibi also a former top 25 GPA-LPI heifer in Canada. Next dam is Gen-I-Beq Shottle Barbi Very Good-88-CAN 1 Star followed by Champion Bambi. Shottle Barbi also has a son at Semex, Gen-I-Beq Brawler, sired by Baxter.

"Brawler is one of the most promising bulls at Semex to receive his first proof this summer," Chabot shared.

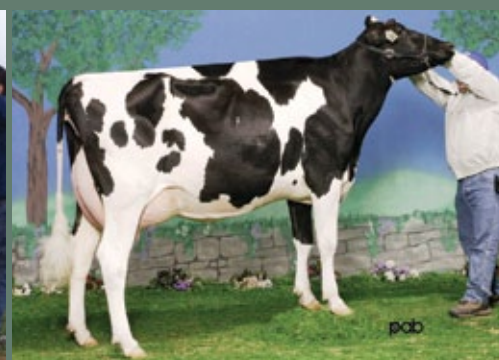
Gen-I-Beq Topside also at Semex debuted at #3 on the Top LPI Bull Report for April 2012 and is the last direct son of Baler Twine. Topside is sired by Sandy-Valley Bolton-ET and has an LPI of +2457 and is +13 for Conformation.



Braedale Gypsy Grand VG-88-5YR-CAN 37*
Canadian Cow of the Year 2003



Braedale Baler Twine VG-86-2YR-CAN 32*
Canadian Cow of the Year 2007



Gillette Blitz 2nd Wind VG-88-3YR-CAN 35*
Canadian Cow of the Year 2011



Gen-I-Beq Shottle Bombi VG-89-CAN 2* EX-92-USA
Former #1 GLPI Cow in Canada | #46 GLPI Cow in Canada (4/12)



Mapel Wood Baxter Bethany VG-85-2YR-CAN
Former #2 GLPI Cow in Canada | #18 GLPI Cow in Canada (4/12)



Benner Planet Bessie GPA-LPI+3520
Former #5 GPA-LPI Heifer in Canada | #10 GPA-LPI Heifer (4/12)

Another great Shottle daughter of Champion Bambi is Gen-I-Beq Shottle Brie Very Good-85-2YR and owned by Ladies First Holsteins. Brie has a Very Good-88 Bolton daughter that they are currently working with as well as high heifers by Iota, Observer and Super.

Former #1 GLPI, Bombi

Gen-I-Beq Shottle Bombi, the former #1 genomic cow in Canada is also a daughter of Champion Bambi Excellent-90-CAN 3 Star.

"The Bombi cow has and always will be a cow close to my heart. She has it all - sire stack, great type, fertility, genomics and the will to milk," shared Len Vlis, Mapel Wood Holsteins.

There is no doubt that Shottle Bombi has impacted the tremendous herd at Mapel Wood and has made her mark on the industry. Mapel Wood Man O Man Brooke is Bombi's highest genomic daughter with a GPA-LPI of +3198. Snowman Bombi is another exciting heifer at Mapel Wood direct from Bombi with a GPA-LPI of +3149.

Len Vlis, Mapel Wood

"Four of the top 12 heifers in Canada have Bombi genes running through them."

Mapel Wood Baxter Bambi Very Good-87-2YR-CAN is Bombi's highest scored daughter and has a Man-O-Man daughter at Mapel Wood with a GPA-LPI+2809 and is due in October to Epic.

"She has seven milking daughters with six being Very Good as two-year-olds and all have the capability to have high testing genomics, even with Million in the pedigree," Vlis said.

Bombi's Man-O-Man son, Mapel Wood Boulder, has a GPA-LPI of +3178 and already has a son tested over +4200 GPA-LPI with a DGV of +4500. "We are excited about her daughters but maybe the excitement is with her sons," Vlis commented. Mapel Wood Brewmaster, Bombi's son by Garrett was tested in France and is one of the highest bulls on French base.

Mapel Wood Million Bombi 640 is another Very Good daughter of Shottle Bombi and is now owned by RockyMountain Holsteins and La Ferme Gillette. An exciting young cow to be working with, she has daughters selling on the Gillette Visions Sale this fall.

Bombi was fresh again fall 2011 and sold to Siemers Holsteins, Newton, Wis.

Sherry Siemers, Siemers Hols.
"She is a medium sized cow but built beautifully. While I was traveling making sale selections she was the only genomic cow that made my hair stand up, she is just so beautiful."

Nicely adjusting to her new home, Bombi scored Excellent-92 94-MS at the age of six. The Siemers family is certainly excited about working with this new addition.

"We plan to utilize Bombi the best we can in our breeding program. She is just a beautiful cow that is capable of producing really beautiful offspring that have genomics. Bombi currently has pregnancies from Lector, Meridian, Daddy and transfers by Supersire. We will be merchandizing from her in the near future," shared Sherry Siemers.

Mapel Wood Baxter Bethany, the Emerald-Acr-Sa T-Baxter daughter of Shottle Bombi calved in April 2010 at Benner Holsteins and has been in the spotlight ever since. She debuted at #8 on the Top GLPI Cow List in December 2010 and was as high as #2 in August 2011. Bethany is scored Very Good-85-2YR-CAN with an outstanding two-year three-month record of 18,745 kilograms of milk in 365 days with 871 fat and 647 protein.

Don Penner, Benner Holsteins
"We have enjoyed working with this family, they have tremendous udders and a tremendous will to milk."

Bethany has daughters by Planet, Alexander, Lauthority, Snowman and Atwood. Benner Planet Bessie, Bethany's most popular daughter to date, sold on the 2011 RockyMountain High Sale for a commanding \$71,000 to Canadian Agriculture Logistics and was the #1 GPA-LPI Planet and #5 GPA-LPI Heifer in Canada at the time. The #5 GPA-LPI Heifer in Canada following the April proof run is Benner Lavaman Boo Boo, the January 2012 Gen-I-Beq Lavaman daughter of Planet Bessie. This tremendous heifer from the Bombis sells on August 4 in the International Intrigue Sale at Butlerview Farms.



Over the past two years, the Bethanys have sold extremely well demanding top prices on North America's most elite sales. Benner Snowman Basanti, GPA-LPI +3046 topped the Prairie Classic National Convention Sale in Brandon, Manitoba this past April selling for \$48,000 to the partnership of Benner and Pennview Holsteins. Her maternal sister, Benner Lauthority Bash, the #1 Lauthority in Canada and the #2 worldwide sold in the same sale for \$14,500. Bethany's only other Snowman daughter, Benner Snowman Brinkworth, has a GPA-LPI of +3203 and sold for \$71,000 in the TAG Genomic Power Sale in November 2011 to Butlerview Farms. Benner Atwood Bentley, Bethany's only Atwood daughter sold in the 2010 International Intrigue Sale for \$26,000 to Ferme Jeanlu and Comestar Holsteins and was just fresh in May. Bentley's daughter by Shamrock, Comestar Benezra Shamrock, GPA-LPI +3339 is the #25 heifer in Canada following the April run and sold for \$57,500 in the April 2012 Genomic Giant Sale.

Bethany is proving to be quite the transmitter for the herd at Benner Holsteins and they look forward to continuing to work with this branch of the Gypsy Grands. Bethany is currently being housed at Boviteq and being flushed IVF. She has embryos that will sell on the Holstein Plaza Online Embryo Auction and inquiries are welcome.

The Goldwyn Impact

It doesn't matter if your herd is striving to breed the next supreme champion at Madison, production record holder or genomic giant likely Goldwyn has left his mark in your breeding program. The Shoremar James son of Braedale Baler Twine quickly rose to the top getting his proof early with impressive numbers and limited semen. Across the globe, Goldwyn was producing daughters that excelled in all types of environments. They were distinguished by their beautiful well-attached udders and long dairy frames, he was an instant sensation!

Goldwyn was as high as #2 on the LPI list in Canada and over eight years later is still in the Top 25 holding strong with an LPI of +2039 following the April run. In the U.S., his index has also held firm with over 52,500 daughters in his proof and keeping him among the Top 50 proven bulls for GTPI at +1985 and among the Top 20 proven bulls for type at 3.07. However, his type credits go way beyond the numbers on paper. Since 2008 Goldwyn has captured the Premier Sire title at World Dairy Expo and at the Royal Winter Fair since 2009. He has had 101 daughters nominated All-American and in the past three years a total of 95 nominated All-Canadian. In Canada alone Goldwyn has sired 732 daughters classified Excellent and 9,726 Very Good. While the remaining straws of Braedale Goldwyn are classified to many as liquid gold, the sons and grandsons of this industry great are already making headlines. If you didn't get a chance to use Goldwyn early there is ample opportunity in some of the very promising sons like Destry, Fever, Gold Chip, Atwood, Goldsun, Jordan, Guthrie and Dempsey to name a few.

2011 Cow of the Year, 2nd Wind

Baler Twine's full sister, Braedale Second Cut Very Good-86-CAN 23 Star started the global phenomenon of 2nd Winds at La Ferme Gillette, Embrun, Ontario.

"Louis purchased a first choice Wade from Gypsy Grand back in 1997

in the Alta Genetics Sale. When he went to Braedale to make the choice he fell in love with a little calf that was tied up in the alley behind the cows. He asked Mark Beaton what that calf was and Mark told him it was a female Storm from Gypsy Grand. Louis asked if he could have her instead of a Wade which the Beatons agreed to," shared Eric Patenaude when asked how they acquired Second Cut.

The Blitz mating on Storm Second Cut was a decision by the team at Ferme Gillette and resulted in six heifer calves. Select Sires was interested in a bull but unfortunately there was not any.

From those six heifer calves developed Gillette Blitz 2nd Wind Very Good-88-CAN with an impressive 35 Star brood cow status.

Eric Patenaude, Ferme Gillette

"We started realizing that Wind was for real when her daughters were calving out and we started seeing a pattern of incredible udders and scoring Very Good as two-year-olds.

"Out of 17 daughters in milk, 15 are Very Good. But what really hit us is when she put out bulls like Windbrook, an FBI son which nobody was talking about because he never had the top genomic numbers as a young sire and came out with awesome numbers. Even Wildthing and Willrock, who would've thought Marion could have two bulls debut at #5," Patenaude said.

This past April, 2nd Wind was recognized with Canada's most prestigious award, Cow of the Year at the 2012 National Holstein Convention in Brandon, Manitoba. 2nd Wind is undoubtedly making an extreme impact to the Holstein breed with five Class Extra sons including Gillette Windbrook, Gillette Windhammer, Gillette Stanley Cup, Gillette Wildthing, and Gillette Willrock and all among the Top 50 LPI bulls following the April 2012 proof run.

2nd Wind daughters are also making quite a splash in the pool of elite Holstein genetics topping the GLPI lists and continuing to produce the next generation of genomic greats.

One of Bolton's greatest daughters and the winner of Hotspot's "Your Favorite Bolton Daughter Contest", Gillette Bolton 2nd Sleep Very Good-89-CAN is without a doubt 2nd Winds most popular and sought-after daughter.

"I think our favorite branch of 2nd Winds is Bolton 2nd Sleep and then her daughter Planet 2nd Snooze. At the moment it's definitely the branch we are mostly working with," Patenaude shared.

When it comes to mating decisions for the family, Patenaude explained that they try to just use the best bulls available, either young genomic or proven, and they have been fortunate that the contracts have just come along.

Every special cow family has its own unique set of characteristics and the 2nd Winds are no different. "The 2nd Winds have high wide rear udders, good feet and legs and are balanced cow but the quality of udder is what really made the family," shared Chabot.

"I think this pattern will be seen through her bulls as well. Also 2nd Wind doesn't have the highest genomic numbers out there but today I think people are realizing that the family has proven itself. When her daughters calve out and get their official proof they shoot right up the GLPI list, not only that they are also beautiful individuals to work with," Patenaude said.

Looking ahead the team at Ferme Gillette is pretty excited about what's coming up. "The matings we have done at Trans Ova will give us (personally) a pretty good insight about how genomics will turn out," Patenaude said.

After spending the last two years at Trans Ova, 2nd Wind has all sorts of offspring coming and from a variety of sires both genomic and proven from Shamrock and Evolve to Aftershock and Observer and proven sires like Lauthority, Jordan, Garrett, Super, Sudan, Iota, Levi and Hero.

The 2nd Wind family is certainly having a huge impact on today's Holstein gene pool and because of the family's continued success generation after generation the impact on the breed will surely be felt for years to come. The family of Ferme Gillette is excited to invite Holstein breeders and enthusiasts to their Gillette Visions 2012 Sale and feel it is a great opportunity to share in their success.

New York Holstein breeder Green and Gold Genetics is already finding success in a purchase from the 2nd Winds. Gillette Roumare Winter Star the #1 GLPI Roumare in Canada was successfully purchased privately by Green and Gold Genetics this past winter. Winter Star is scored Very Good-87-2YR-CAN and is the daughter of Gillette Elegant 2nd Wind Very-Good-87-2YR followed by 2nd Wind herself. Embryos from the Roumare have already been exported and they are excited to continue flushing and working with this tremendous 2nd Wind granddaughter!

Gypsy Grands Worldwide

North America has certainly been spoiled with the prominence of this great brood cow family but with the export of embryos and semen the dominance can be felt and measured worldwide. In the UK where there are several Baler Twine daughters a few sort themselves to the top. Woodmarsh Morty Gypsy Queen is scored VG-88-UK and sired by Stouder Morty-ET; her daughter, Woodmarsh Bolton Gypsy Queen 2, is scored VG-87-UK and is currently the #3 GTPI outcross cow in Europe with a GTPI of +2203.

Still, the influence of the family overseas has primarily been through the success of the Gypsy Grand bulls, which have proved incredibly popular. In the UK no less than eight of the top 10 £PLI cows are sired by Goldwyn and index is not their only strength; at last year's National Holstein Show two of the four section champions and three of the four reserve champions were sired by Goldwyn!

As the branches continue to develop and the Gypsy Grand family continues to leave its imprint one thing is certain, this family is truly among the greatest in the world! The deep Canadian roots and careful matings generation after generation are now allowing this family's elite Holstein genetics to reach all corners of the globe and impact the progress of this great breed.



Gillette Bolton 2nd Sleep VG-89-4YR-CAN | GLPI+2798
(Bolton x 2nd Wind) | #35 GLPI Cow in Canada - April 2012



Gillette S Planet 2nd Snooze VG-86-2YR-CAN | GLPI+3306
(Planet x 2nd Sleep) | #5 GLPI Cow in Canada - April 2012



Gillette M O M Never Sleep GPA-LPI+2520
(Man-O-Man x 2nd Sleep) Exciting heifer at Gillette and due in June!



Gillette Windbrook EX-95-CAN EXTRA*10
(FBI x Blitz 2nd Wind) | #11 LPI Bull - April 2012 | LPI+2198

BRAEDALE GYPSY GRAND FAMILY



♀ **Gen-I-Beq Duplex Balsamy VG-87-2YR-CAN**
(s. Mesland Duplex-ET)

♀ **Gen-I-Beq Duplex Balsy VG-87-2YR-CAN**
(s. Mesland Duplex-ET)

♀ **Mapel Wood Baxter Bambi VG-87-2YR-CAN**
(s. Emerald-Acr-Sa T-Baxter)

♀ **Mapel Wood Baxter Bethany VG-85-2YR-CAN**
(s. Emerald-Acr-Sa T-Baxter)

♀ **Mapel Wood Bolton Barbie VG-85-2YR-CAN**
(s. Picston Shottle-ET)

♀ **Mapel Wood Million Bombi 640 VG-85-2YR-CAN**
(s. England-Ammon Million-ET)

♀ **Mapel Wood Million Bambi VG-85-2YR-CAN**
(s. England-Ammon Million-ET)

♀ **Mapel Wood Million Bombi VG-85-2YR-CAN**
(s. England-Ammon Million-ET)

♀ **Mapel Wood Man O Man Brooke GPA-LPI+3198 (4/12)**
(s. Long-Langs Oman Oman-ET)

♀ **Mapel Wood Snowman Bombi GPA-LPI+3149 (4/12)**
(s. Flevo Genetics Snowman)

♂ **Mapel Wood Boulder GPA-LPI+3178 (4/12)**
(s. Long-Langs Oman Oman-ET)

♀ **Gen-I-Beq Baxter Berthe VG-87-2YR-CAN**
(s. Emerald-Acr-Sa T-Baxter)

♀ **Gen-I-Beq Baxter Britany VG-86-2YR-CAN**
(s. Emerald-Acr-Sa T-Baxter)

♀ **Gen-I-Beq ManOMan Bibi GPA-LPI+3007 (4/12)**
(s. Long-Langs Oman Oman-ET)

♀ **OConnors Snowman Bermuda GPA-LPI+3695 (4/12)**
(s. Flevo Genetics Snowman)

♀ **Maplemount Bolton Bunny-ET VG-88-USA**
(s. Sandy-Valley Bolton-ET)

♀ **Gillette S Planet 2nd Snooze VG-86-2YR-CAN**
(s. Ensenada Taboo Planet-ET)

♀ **Gillette Onward 2nd Movie VG-85-2YR-CAN**
(s. Andacres Morty Onward)

♀ **Gillette Roumare Winter Star VG-87-2YR-CAN**
(s. Roumare)

♀ **Gillette Roumare Windlip VG-85-2YR-CAN**
(s. Roumare)

♀ **Gillette Bolton 2nd Look VG-87-3YR-CAN**
(s. Sandy-Valley Bolton-ET)

♀ **Gillette Shottle 2nd Moon VG-87-2YR-CAN**
(s. Picston Shottle-ET)

♀ **Gillette Buckeye 2nd Heat VG-88-CAN**
(s. R-E-W Buckeye-ET)

♀ **Affinity Hand Me Down Burns VG-88-3YR-CAN**
(s. Dudoc Mr Burns-ET)

♀ **Affinity Milli Snd Shot-ET VG-88-2YR-USA**
(s. Picston Shottle-ET)

♀ **Benner Planet Bessie-ET GPA-LPI+3520 (4/12)**
(s. Ensenada Taboo Planet-ET)

♀ **Benner Lavaman Boo Boo GPA-LPI+3662 (4/12)**
(s. Gen-I-Beq Lavaman)

♀ **Benner Snowman Brinkworth GPA-LPI+3203 (4/12)**
(s. Flevo Genetics Snowman)

♀ **Benner Snowman Basanti GPA-LPI+3046 (4/12)**
(s. Flevo Genetics Snowman)

♀ **Benner Atwood Bentley GPA-LPI+2312 (4/12)**
(s. Maple-Downs-I G W Atwood-ET)

♀ **Comestar Benezra Shamrock GPA-LPI+3339 (4/12)**
(s. Ladys-Manor PI Shamrock-ET)



Gen-I-Beq Champion Bally EX-95-CAN



Gen-I-Beq Morty Barbie VG-87-CAN



Gen-I-Beq Duplex Balsamy VG-87-CAN



Taiga ET VG-85-UK



Misty Springs Shottle Breeze VG-87-CAN



Misty Springs Wildman Breeze VG-85-CAN



Gillette Blitz 2nd Wedding VG-87-CAN



Gillette Bolton 2nd Look VG-87-CAN



Affinity Milli Snd Shot VG-88-USA



Gillette Bolton 2nd Sleep VG-89-CAN



Gillette Bolton 2nd Motivation VG-89-CAN



Gillette S Planet 2nd Snooze VG-89-CAN



Gen-I-Beq Shottle Barbi VG-88-CAN



Gen-I-Beq Shottle Brie VG-85-USA



Maplemount Bolton Bunny VG-88-USA



Gen-I-Beq Shottle Bombi EX-92-USA



Mapel Wood Million Bombi 640 VG-CAN



Mapel Wood Baxter Bambi VG-87-CAN



Benner Baxter Bethany VG-85-CAN



Benner Planet Bessie I GPA-LPI+3520



Gillette Roumare Winter Star VG-87-CAN