

# Coyne-Farms Ramos Jelly

## → Dominating the bull charts

The Coyne-Farms Ramos Jelly family is one of the most exciting and hottest cow families in the industry. Seldom has a cow family been as persistent and dominant in both the female and male charts. This dominance peaked in the August 2013 run when Facebook sons Jabir and Jetset, together with their cousins Jacey and Nominee, ranked in the Top 20 of the GTPI charts.

Coyne Farms has been in the spotlights of the International marketplace the last few years, especially with cow families like Daffers (Dorcy), Yaddas (Massey) and Myra (Mack). The Coyne Farms operation has claimed a position among the favorite herds of sire analysts. This article highlights a new cow family at the 1,000-cow herd of Coyne's that has stepped out of the shadows.

The Coyne-Farms Ramos Jelly family has been present at Coyne Farms, Avon, N.Y. for many generations, much longer than the other successful cow families. The cow family started with the purchase of Sugarcreek-Vu King Jessie (s. Cotterdale Astronaut King) in the 1970s from Philip Saunders of Dansville, N.Y. Jessie was from a good cow family and developed into a Very Good cow herself.

Over the years and generations, the Coyne's have continued to develop this family. Via multiple generations of Very Good cows, the first

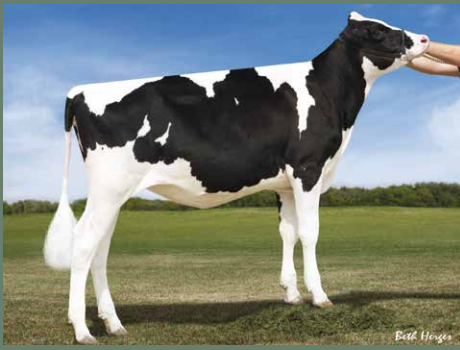
cow to receive A.I. interest was Coyne-Farms Bestow Jell. This Excellent Bestow daughter had a VG-87 Aero Wade dam and a VG-86 Skybuck granddam, a different pedigree than most bull dams in those days. Greg Coyne, Coyne Farms explains: "The reason that there are some different bulls in the pedigree is because we started selecting for productive life before it became popular by other breeders."

Though Skybuck was born nearly 30 years ago, and Bestow 21 years ago, they still score +2.2 and +1.7 for PL, respectively. From Bestow Jell, sons by Magical and Shottle went to A.I. and she also had daughters scored Very Good by Magical and Shottle. One of these Very Good daughters was Coyne-Farms Shottle Jam VG-88, the dam of Coyne-Farms Ramos Jelly. Like the other Shottle daughters, Jam did really well at Coyne Farms. Coyne mentions "I think Shottle is the best bull we have used on the farm since Elevation, his daughters do exceptionally well here in the barn and produce tons of milk." Besides Jelly, Jam has several other good daughters at Coyne Farms, including two Very Good daughters by Freddie.

### Coyne-Farms Ramos Jelly

The cow that put this family on the map was Ramos daughter, Coyne-Farms Ramos Jelly Very Good-85. Jelly was born in January 2008 but her career took off in January a year later. During that index run the





**Butlerview SR Jewel GTPI +2411 (12/13)**  
Highest GTPI daughter of Jeven and granddaughter of Jelly



**Coyne-Farms Freddi Jeven VG-85 DOM**  
Sons in A.I. and numerous high testing daughters



**Coyne-Farms Ramos Jelly VG-85 DOM**  
Numerous grandsons and granddaughters at the top of the charts

first genomic lists were published and Ramos Jelly ranked in the top 10. Because of her sky-high genomic index and different pedigree Jelly was one of the most popular females in the breed, and she was already flush-age. Her first flush was to Freddie and responsible for that mating was Lloyd Simon. Simon is now retired but worked as a Sire Procurement Officer for Genex at the time. Simon comments, “I really like this cow family, the Bestow was a heck of a cow and she had a great Shottle daughter. Jelly was high on the charts and we decided to mate her to Freddie. Freddie was at that time the No. 1 GTPI young sire and was a few daughters short of receiving his daughter proven index. The combination of his high genomics, and promising first daughters gave us much confidence in the bull. Moreover, Freddie was also great on the health traits, good for production, had an outcross pedigree despite being an Oman son, and never qualified for Europe.”

This flush to Freddie led to several great daughters that have been extremely successful for their owners. A male from the flush, Coyne-Farms Fred Jaguar, went to Alta and has a GTPI of +2161 with his first daughters now reaching breeding age. For the second flush on Jelly, it was decided to use high GTPI outcross sire, Massey. Lloyd states, “The mating to Massey was special since the maternal line of Massey also goes back to Coyne-Farms.” After the flush, Jelly was bred to another Coyne Farms product, Dorcy, a bull from the popular Daffers family. This resulted in Coyne-Farms Dorcy Jean VG-86. Coyne mentions, “We have been extremely lucky with our sire selection, those bulls ranked high at that time, who could have expected that they now rank No. 1, No. 3 and No. 4 on GTPI for proven bulls.”

## The Freddie's

As already mentioned, the Freddie flush was interesting but the results went beyond expectations. The flush resulted in six daughters who all scored Very Good and proved themselves as excellent milk producers. “We really like our Freddie's, they are low maintenance and produce a ton of milk,” states Coyne. Two of the Freddie daughters were sold, including Coyne-Farms Freddie Jell, sold to Oakfield Corners Dairy, N.Y. Jell has been in a flush program and has high testing daughters by Doorman.

## Jonathan Lamb, Oakfield Dairy

“We bought Jell because we really like our Freddie's, and like Ramos as a maternal grandsire. The cow family has consistently bred true, making balanced cattle that work well in commercial settings.”

The other Freddie that sold was Coyne-Farms Freddie Jeven; she sold to Butlerview and later to Farnear.

Jeven did really well for both of her new owners. At Butlerview, she was mated to Shamrock and Robust. The Robust mating resulted in Butlerview R Jewlen-ET (owned by Elite Dairy Genomics); scored GTPI+2367 with a GTPI+2379 Jerod daughter at Alta. The most successful mating was to Shamrock. To illustrate, seven full sisters ranked in the Top 25 Net Merit in April 2012! Another three family members were also in this top 25, making 40% of the Top 25 Net Merit Coyne-Farms Ramos Jelly family members. EDG also owns the highest Shamrock daughter of Jeven, Butlerview SR Jewel, with a GTPI of +2411. Jewel has high daughters by Mogul (GTPI+2526) and Liquid Gold (GTPI+2465). Another Shamrock daughter of Jeven owned by EDG is Butlerview SR Jeven Jala, an individual that has four daughters scoring above +2300 GTPI including a McCutchen at +2401 GTPI.

A +2308 GTPI Shamrock daughter of Jeven, Butlerview SR Julie, sold for \$90,000 in the 2012 International Intrigue to Richmond Farms, N.Y. “Julie is now pregnant and due in March,” states Chuck Richmond, Richmond Farms. Julie has daughters by Tango, Massey and Oak. The four Tango daughters all score above GTPI+2330 and the highest Massey scores GTPI+2335. Richmond-FD Tango July GTPI+2397, sold in the Sale of Stars 2013 to ABS Global for \$26,000. “We are really happy on how the family performs for us. We bought Julie because we saw Jeven and we really liked her. The family also performs genomic wise really well,” Richmond said.

Jeven has numerous daughters at Farnear.

## Bill Rauen, Farnear Holsteins

“Jeven is a cow that is 10 years ahead of her time. She is the type of cow that farmers want, low in maintenance, competitive and with extremely high components. The only time you see her is when she gets milked or flushed, to me that's the type of cow every free-stall farmer wants.”

Jeven was on an extensive flush/IVF program after being purchased by Farnear as a heifer. “Jeven was interesting for multiple reasons, she was one of the highest Freddie daughters and she had no Goldwyn or Planet in her pedigree which meant we could use many of the high bulls on her,” Rauen commented. Jeven is now pregnant and Farnear will continue to work with the family through Jeven's daughters by Numero Uno and Mogul.





**Daughter-Dam Duo**  
**Coyne-Farms Freddie Jill VG-85 and Coyne-Farms Ramos Jelly VG-85 DOM**  
 Jill and Jelly are currently housed at Sunshine Genetics where they continue to be flushed.

From the Freddie's that remained at Coyne Farms, Coyne-Farms Freddie Jill has been the most successful. Coyne explains, "Jill was the highest [GTPI] and the other ones were unfortunately \*CV, so that's why we focused on Jill." Coyne-Farms Freddie Jill is the dam of high Facebook sons, Coyne-Farms Jabir and Coyne-Farms Jetset; both have been used extensively as sire of sons. Jill along with Jelly is housed at Sunshine Genetics, Wis. where they continue to be flushed.

Coyne states, "We have been really successful with Jill, most of her earliest daughters we sold." Freddie Jill's highest daughter sold at the New York International Spring Sale to Jeff Butler, Butlerview Farms, Ill. for \$70,000. Declan Patten, Marketing and Communications Manager for Butlerview states, "We had a huge amount of interest in this heifer. We really liked her cow family and she had a very strong maternal line that could make fantastic cows for any operation." T-Spruce Holsteins, Minn. owns a full sister to Jabir and Jetset, with high testing daughters by Cashcoin. Yannick Louis from GAEC Bon-Temps, France bought Coyne-Farms Ravish Jody; she already has five daughters tested over GTPI+2300 of which a Cashcoin daughter sold at the Sale of Stars 2013 to Morsan Farms, Alberta. Coyne states, "For the future, I think the line of Jill will become the most dominant as we have many pregnancies from her."

## The Massey

As mentioned, after her first flush to Freddie, Jelly was flushed to Massey, one of the highest genomic bulls at that time. This flush resulted in a bull, Coyne-Farms Mass Jake, who carries a GTPI+2171 and is awaiting his proof at Genex. The heifer born from this flush was Coyne-Farms Mass Jill. Jill was flushed just once as a heifer at Coyne Farms resulting in only bulls of which Jacey is the most well-known. After this flush she was sold through the Legends of the Fall Sale to De-Su Holsteins, Iowa. At De-Su, she was flushed numerous times resulting in many offspring. Mass Jill has proven herself as a great brood cow with no less than 10 daughters above +2300 GTPI sired by Nu-

mero Uno, Shamrock, Super Layne, Observer, Platinum and Sudan and 16 granddaughters also over +2300 GTPI. Her highest daughter is De-Su 1851 with a GTPI of +2470; 1851 already has six daughters scoring over +2300G including the highest female from the Jelly cow family, De-Su Platinum 3347-ET GTPI+2570. 1851's full sister De-Su 1846 (+2381G) also has high daughters by Platinum (+2415G, +2364G and +2338G). A Shamrock daughter of Massey Jill, De-Su 1481-ET, has a GTPI+2521 Jabir at De-Su.

Besides high female offspring, Mass Jill has also produced several high sons for De-Su including AltaJackman, AltaJohnson and Nominee, with more sons to come. Mass Jill unfortunately slipped her calf prematurely and doesn't have a recorded lactation or classification score.

## Dominating the bull charts

There was not a cow family that dominated the charts more last year than the Jellys. Jon Schefers, Regional Sire Analyst for Alta Genetics comments, "The true breeding potential of Jelly will likely be realized through her numerous grandsons, many of which were or are currently used as mating sires. Through her daughter Massey Jill, Jacey (s. Iota), AltaJackman (s. Snowman), AltaJohnson (s. Snowman) and Nominee (s. Numero Uno) have been extremely popular and through Freddie Jill the Facebook sons Jabir and Jetset got substantial use as sire of sons. Each of these sires offers the total package; production, health and conformation."

Schefers is looking forward for the sons and grandsons, "I'm excited to see how well she can transmit through these sons."

Coyne mentions that the August 2013 index run, when the Jelly grandsons dominated the charts, is his most valuable memory so far. "As a breeder one bull in the top 20 is great, but four is an absolute dream." And there are more bulls to come; a high testing Gillespy son from Freddie Jill went to ABS Global on a lease deal. Coyne mentions, "The Gillespy is one of the first bulls we tested ourselves and we are excited about his future."

## Other daughters

The story of great Jelly daughters doesn't end with the Freddie's, Massey and Dorcy daughters. Jelly's highest GTPI daughter is Coyne-Farms Srock Jill. Sired by Shamrock, she sold for \$116,000 at the Party at the Park Sale 2012 to MD-MRK, Md. Unfortunately, Srock Jill died in an accident shortly after the sale and wasn't able to produce any offspring. The highest GTPI (young) daughter of Jelly at Coyne Farms is Coyne-Farms Latimer Joan with a GTPI of +2345.

The Jellys are one of the few cow families that once genomics were introduced all the pieces of the puzzle fell together. People were looking for outcross pedigrees, new cow families, fitness, productive life, and the Jellys offered all of that and more. The fact that Jelly was flushed to the highest genomic bulls that now rank among the highest proven bulls increased the effect this cow family had on the breed almost exponentially. Today, the Jellys rank among the most popular cow families in the world and breeders and sire analysts are eager to find the next high one.

