

International Holstein Auction

**7-Night European River Cruise - Paris & Normandy
September 7th - 14th, 2023**

**Auction takes place on Saturday, September 9th, 2023
12:00 Noon EST**

Absentee bidding must be done by text messaging or email to sale staff or sale manager by 12:00 Noon EST on Saturday, September 9th!

TERMS:

- All lots have minimum starting bids & all sales are cash
- Terms of payment: 10% of purchase price to sale management by 10/1/2023
- Balance on live lots due at 5 months of age prior to selection
- Balance on embryo lots due after embryos are made and prior to shipment with buyer paying all shipping expenses & any international cost of production.

Sale Force:

Tim Rauen	563-451-5866	timrauen@genosource.com
Brian Behnke	608-279-2016	brian.behnke@genusplc.com
Andrew King	360-981-3801	kingandrew418@gmail.com
Steve Mower	240-520-5906	steve.mower@amsgenetics.com
Declan Patten	+61 499 949 292	declan.patten@cuttingedgegenetics.com
Justin Velthuis	613-327-4288	velthuisjustin@gmail.com
Tony Van Lith	519-532-1776	tvanlith@outlook.com
Dane Thompson	715-441-0188	dane.thompson@amsgenetics.com
Jimmy Perreault	450-898-7199	j.perreault@blacksilverbovine.com

Sale Management:

Ed Fellers Sales
Ed Fellers 913-484-4121 edmondfellers@yahoo.com
3500 Gulf Shore Blvd N., Suite 304 Naples, FL 34103

BUYERS CHOICE OF LOTS 1 OR 2!

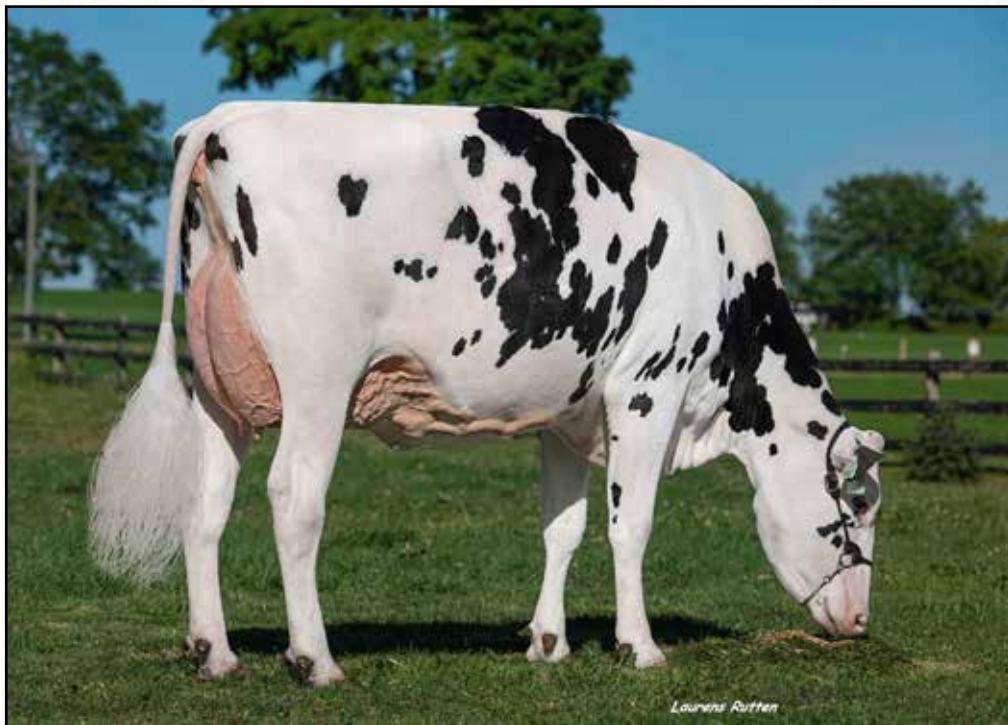
MINIMUM BID: \$70,000

EACH CAPABLE OF MAKING THE NEXT GREAT HOMOZYGOUS POLLED RED SIRE IN THE BREED!!!



**VALIANT RBL MUFFLER-RED-ET *PO
DAM OF LOTS 1 & 2**

*Muffler-Red *PO is absolutely stunning!*



**APRILDAY LUSTER MUFFIN-ET *PP *RC VG-85-CAN VG-87-MS
2ND DAM OF LOTS 1 & 2**

International Holstein Auction

Lot 1

- BELIEVED TO BE THE ONLY HOMOZYGOUS POLLED *RC FEMALE IN THE BREED THAT IS +2855 GTPI AND +2.50 TYPE!!!

- SHE IS +1370 MILK, A2A2, BB!!! AND POSITIVE ON FERTILITY INDEX!!!

Stantons Remover PP

CAN 13440455 *TY *TV *PP A2A2 BB
PTA +1878M +101F +65P 83R 8/23
PTA +816NM +.10%F +.02%P
PTA +1.7PL 3.01SCS -.20DPR 2.5%DCE
PTA +2.06T +1.60UDC +.83FLC 81R 8/23
GTPI +2885G

Valiant Rbls Muffler-Red-ET

840 3231000266 *PO A1A2 BB
GTPI +2800G PTA +934M +60F +40P 81R 8/23
PTA +5.3PL 2.75SCS +.1DPR 2.2%DCE
PTA +2.09T +1.74UDC +1.70FLC 80R 8/23
GPA LPI +3483 Conf +7 8/23

- Former #1 GTPI Red Polled Female in the Breed!

ESKDALE REMUFF-PP-RC-ET

840 3271802207 99%RHA *RC *PP A2A2 BB
Born: June 4, 2023 Herd ID: 12206
GTPI +2855 PTA +1370M +81F +46P 79R 8/23
PTA +756NM +.10%F +.01%P
PTA +3.3PL 2.92SCS -.1DPR 2.2%DCE
PTA +2.52T +2.12UDC +1.08FLC 77R 8/23
PTA +207FE +0.0FI 2.4%SCE

Cherry-Lily Zip Luster-P-ET

840 3138843085 GM 12/21 *PC *TY *TV A2A2
PTA +1584M +82F +49P 99R 8/23
PTA +2.67T +2.28UDC +1.76FLC GTPI +2902G

Stantons Bighit Maker-ET

CAN 13057148 GP-83-CAN 5*
2-01 3x 365d 36528 4.0 1459 3.6 1318
4-05 3x 288d 24268 4.1 988 3.6 864 RIP

Hoogerhorst DG OH Rubels-Red

NLD 679520401 *TC *TY *TV
PTA +1021M +68F +47P 96R 8/23
PTA +2.05T +1.56UDC +1.26FLC GTPI +2712G

Aprilday Luster Muffin-ET

840 3207031363 VG-85-2YR-CAN VG-87-MS *RC *PP
GTPI +2675 +822M +39F +26P 83R 8/23
PTA +1.51T +1.29UDC +1.51FLC GLPI +3304
2-02 Rx 365d 28417 4.2 1199 3.2 922

- Former #1 Homozygous Poled Red Carrier GTPI & GLPI Female in the Breed! 2 Sons at AI Total!

MUFF PP SYNDICATE
C/O SNAKE RIVER DAIRY
MELBA, ID
209-941-6144

3rd Dam

Aprilday P Margarita-Red-ET GP-83 *PP *TC
2-03 3x 333d 27410 4.4 1195 3.2 871

4th Dam

Aprilday Jax Martini-Red-ET VG-87 VVVVV *PC
3-00 3x 305d 28830 4.2 1223 3.3 953

5th Dam

Ms Cash Coin Margie-ET VG-85 *RC

6th Dam

Palmyra M-O-M Manhattan-ET VG-85 *RC

2-04 2x 365d 32440 4.2 1377 3.5 1124

7th Dam

Debaugh Rdman Manhattan-ET EX-91 *RC

3-03 2x 365d 32120 4.7 1511 3.2 1038

Life: 1619d 106830 4.5 4842 3.5 3732

8th Dam

Sutton Outside Mango VG-87 VG-MS DOM

2-11 2x 365d 32460 4.3 1385 3.0 978

9th Dam

Sutton Gilbert Marie EX-90 VEVVE 2E

5-06 3x 365d 41910 3.4 1411 2.8 1158

Life: 2382d 223540 3.6 8105 2.9 6308

Next four dams VG & EX

Lot 2

- BELIEVED TO BE THE ONLY HOMOZYGOUS POLLED, RED CARRIER FEMALE IN THE BREED THAT IS +2830 GTPI AND +2.90 TYPE!

- SHE IS A2A2, BB WITH AN INCREDIBLE +2.05 FLC FOR POLLED HOLSTEINS! AND + FERTILITY INDEX!!!

Eskdale Lustrous-PP

840 3214540632 *PP *TR *A2A2 *BB
PTA +736M +71F +33P 82R 8/23
PTA +506NM +.15%F +.04%P
PTA +.7PL 2.94SCS -.17DPR 2.0%DCE
PTA +3.28T +2.61UDC +1.85FLC 81R 8/23
GTPI +2719G

Valiant Rbls Muffler-Red-ET

840 3231000266 *PO A1A2 BB
GTPI +2800G PTA +934M +60F +40P 81R 8/23
PTA +5.3PL 2.75SCS +.1DPR 2.2%DCE
PTA +2.09T +1.74UDC +1.70FLC 80R 8/23
GPA LPI +3483 Conf +7 8/23

- Former #1 GTPI Red Polled Female in the Breed!

ESKDALE MUFF-PP-RC-ET

840 3271802212 99%RHA *RC *PP A2A2 BB
Born: June 5, 2023 Herd ID:
GTPI +2838 PTA +884M +74F +44P 78R 8/23
PTA +704NM +.14%F +.06%P
PTA +3.1PL 2.91SCS -.4DPR 2.0%DCE
PTA +2.90T +1.81UDC +2.05FLC 78R 8/23
PTA +0.0FI 2.5%SCE

Cherry-Lily Zip Luster-P-ET

840 3138843085 GM 12/21 *PC *TY *TV A2A2
PTA +1584M +82F +49P 99R 8/23
PTA +2.67T +2.28UDC +1.76FLC GTPI +2902G

Eskdale Splendid Almah

840 3139120139 Excellent-90 EEEVE
3-10 2x 305d 30720 4.8 1479 3.7 1137
2-00 2x 365d 28800 5.0 1436 3.9 1116

Hoogerhorst DG OH Rubels-Red

NLD 679520401 *TC *TY *TV
PTA +1021M +68F +47P 96R 8/23
PTA +2.05T +1.56UDC +1.26FLC GTPI +2712G

Aprilday Luster Muffin-ET

840 3207031363 VG-85-2YR-CAN VG-87-MS *RC *PP
GTPI +2675 +822M +39F +26P 83R 8/23
PTA +1.51T +1.29UDC +1.51FLC GLPI +3304
2-02 Rx 365d 28417 4.2 1199 3.2 922

- Former #1 Homozygous Poled Red Carrier GTPI & GLPI Female in the Breed! 2 Sons at AI Total!

MUFF PP SYNDICATE
C/O SNAKE RIVER DAIRY
MELBA, ID
209-941-6144

3rd Dam

Aprilday P Margarita-Red-ET GP-83 *PP *TC
2-03 3x 333d 27410 4.4 1195 3.2 871

4th Dam

Aprilday Jax Martini-Red-ET VG-87 VVVVV *PC
3-00 3x 305d 28830 4.2 1223 3.3 953

5th Dam

Ms Cash Coin Margie-ET VG-85 *RC

6th Dam

Palmyra M-O-M Manhattan-ET VG-85 *RC

2-04 2x 365d 32440 4.2 1377 3.5 1124

7th Dam

Debaugh Rdman Manhattan-ET EX-91 *RC

3-03 2x 365d 32120 4.7 1511 3.2 1038

Life: 1619d 106830 4.5 4842 3.5 3732

8th Dam

Sutton Outside Mango VG-87 VG-MS DOM

2-11 2x 365d 32460 4.3 1385 3.0 978

9th Dam

Sutton Gilbert Marie EX-90 VEVVE 2E

5-06 3x 365d 41910 3.4 1411 2.8 1158

Life: 2382d 223540 3.6 8105 2.9 6308

Next four dams VG & EX

International Holstein Auction



DUCKETT PERFECT HADLEY-ET
DAM OF LOTS 3 & 4

Lot 3

- POLLED +2874 GTPI +1903 MILK +3.20 TYPE IS HUGE!!! ALSO SHE IS A2A2 AND BB!!!
- SHE IS AN AMAZING +950M OVER PARENT AVERAGE!!!

Eskdale Lustrous-PP

840 3214540632 *PP *TR A2A2 BB
PTA +736M +71F +33P 82R 8/23
PTA +506NM +.15%F +.04%P
PTA +.7PL 2.94SCS -1.7DPR 2.0%DCE
PTA +3.28T +2.61UDC +1.85FLC 81R 8/23
GTPI +2719G

Duckett Perfect Hadley-ET

840 3235342384 A2A2 BB
GTPI +2873 +1170M +59F +57P 81R 8/23
PTA +628NM +.05%F +.07%P
PTA +3.6PL 3.00SCS -.3DPR 1.7%DCE
PTA +3.07T +2.57UDC +1.70FLC 80R 8/23
GPA LPI +3421 Conf +10

- Beautiful bred heifer due early September with outstanding udder promise!!!

RIVERDOWN LUSTROUS HADLEY

840 3216600172 *PO A2A2 BB
Born: January 25, 2023
GTPI +2874 +1903M +80F +64P 78R 8/23
PTA +683NM +.02%F +.02%P
PTA +2.2PL 2.96SCS -2.4DPR 2.2%DCE
PTA +3.20T +2.36UDC +1.27FLC 78R 8/23

- Minimum bid: \$8,000

Cherry-Lily Zip Luster-P-ET

840 3138843085 GM 12/21 *PC *TY *TV A2A2
PTA +1584M +82F +49P 99R 8/23
PTA +2.67T +2.28UDC +1.76FLC GTPI +2902G

Eskdale Splendid Almah

840 3139120139 Excellent-90 EEEVE
3-10 2x 305d 30720 4.8 1479 3.7 1137
2-00 2x 365d 28800 5.0 1436 3.9 1116

Siemers Rengd Perfect-ET

840 3200124761 *TY *TV
PTA +1005M +95F +57P 98R 8/23
PTA +2.66T +2.40UDC +2.30FLC GTPI +3084G

S-S-I Doc Have Not 8784-ET

840 3143722147 Excellent-96 EEEEE @ 5-08
GTPI +2758 +1645M +49F +54P 84R 8/23
PTA +3.00T +2.58UDC +.97FLC 84R 8/23
4-05 2x 320d 35670 3.9 1404 3.3 1162
3-06 2x 297d 33723 3.6 1218 3.1 1043

- Reserve All-American 4-Year-Old 2022
- Sold as a package for \$1,925,000 in 2022!

RIVERDOWN HOLSTEINS & JAQUEMET HOLSTEINS
METCALFE, ON
613-327-4288

- Heifer can be housed until trucking is arranged

3rd Dam

Fly-Higher Jedi Havenot-ET VG-86 VG-MS
3-05 3x 319d 27979 3.1 858 3.4 902

4th Dam

Cookiecutter Masy Hashes-ET VG-85 VG-MS
3-11 3x 365d 39630 3.6 1436 3.1 1209
Life: 1393d 121290 3.9 4762 3.2 3920

5th Dam

Cookiecutter MOM Halo-ET VG-88 EX-MS DOM
2-00 3x 365d 35280 5.2 1819 3.5 1237

6th Dam

Cookiecutter Gld Holler-ET VG-88 EX-MS DOM
2-03 3x 365d 40730 3.5 1410 3.1 1249

7th Dam

Ms Kngs-Rnsm Champ Haley-ET EX-90 GMD DOM
3-11 2x 365d 43690 3.7 1653 3.1 1357

8th Dam

Regancrest-JDV Hanna-ET EX-90 EEVVE
4-05 2x 365d 45110 4.3 1922 3.2 1449

Next four dams VG & EX including Dellia EX-95!

International Holstein Auction



S-S-I DOC HAVE NOT 8784-ET EX-96
2ND DAM OF LOTS 3 & 4

Lot 4

* Buyer is purchasing rights to control the next IVF session(s). Buyer is guaranteed IVF sessions until a minimum of 8 #1 or #2 IVF embryos are produced. Embryo grades are determined at the time of transfer if fresh embryos or at time of freezing if freezing is requested by buyer. Buyer keeps all resulting embryos from these controlled IVF sessions. Buyer is responsible for all costs of the aspiration and mating sire decision.

Siemers Rengd Perfect-ET

840 3200124761 *TY *TV
 PTA +1005M +95F +57P 98R 8/23
 PTA +883NM +.19%F +.09%P
 PTA +4.6PL 2.89SCS +.6DPR 1.8%DCE
 PTA +2.66T +2.40UDC +2.30FLC 95R 8/23
 GTPI +3084G

S-S-I Doc Have Not 8784-ET

840 3143722147 Excellent-96 EEEEE @ 5-08
 GTPI +2758 +1645M +49F +54P 84R 8/23
 PTA +3.00T +2.58UDC +.97FLC 84R 8/23
 4-05 2x 320d 35670 3.9 1404 3.3 1162
 3-06 2x 297d 33723 3.6 1218 3.1 1043
 • Reserve All-American 4-Year-Old 2022
 • Sold as a package for \$1,925,000 in 2022!

IVF SESSION FROM:

DUCKETT PERFECT HADLEY-ET

840 3235342384 A2A2 BB
 GTPI +2873 +1170M +59F +57P 81R 8/23
 PTA +628NM +.05%F +.07%P
 PTA +3.6PL 3.00SCS -.3DPR 1.7%DCE
 PTA +3.07T +2.57UDC +1.70FLC 80R 8/23
 GPA LPI +3421 Conf +10

S-S-I PR Renegade-ET

840 3142352961 GM 12/21 *TY *TV
 PTA +936M +89F +56P 99R 8/23
 PTA +1.97T +1.58UDC +2.06FLC GTPI +2953G

Siemers Lmda Paris 27856-ET

840 3141495692 Excellent-91
 3-05 2x 365d 38580 4.1 1579 3.7 1435
 2-00 2x 365d 34200 4.5 1523 3.7 1257

Woodcrest King Doc

840 3132417775 Excellent-90 GM 12/21 *TY *TV
 PTA +1584M +68F +54P 99R 8/23
 PTA +3.24T +2.15UDC +1.99FLC GTPI +2802G

Fly-Higher Jedi Havenot-ET

840 3132362543 Very Good-86 VG-MS @ 2-06
 3-05 3x 365d 31495 3.2 994 3.4 1060
 4-07 3x 365d 31429 3.1 985 3.3 1034

RIVERDOWN HOLSTEINS & JAQUEMET HOLSTEINS
 METCALFE, ON
 613-327-4288

- Minimum bid: \$14,000
- IVF session will be carried out by Boviteq
- ONLY OTHER FLUSH FROM HADLEY SOLD FOR \$14,000 IN BRIGHT FUTURES SALE!

3rd Dam

Cookiecutter Masy Hashes-ET VG-85 VG-MS

3-11 3x 365d 39630 3.6 1436 3.1 1209
 Life: 1393d 121290 3.9 4762 3.2 3920

5th Dam

Cookiecutter MOM Halo-ET VG-88 EX-MS DOM

2-00 3x 365d 35280 5.2 1819 3.5 1237

6th Dam

Cookiecutter Gld Holler-ET VG-88 EX-MS DOM

2-03 3x 365d 40730 3.5 1410 3.1 1249

7th Dam

Ms Kngs-Rnsm Champ Haley-ET EX-90 GMD DOM

3-11 2x 365d 43690 3.7 1653 3.1 1357

8th Dam

Regancrest-JDV Hanna-ET EX-90 EEVVE

4-05 2x 365d 45110 4.3 1922 3.2 1449

7th Dam

Long-Haven Rudolph Dee-ET EX-90 2E GMD

2-11 2x 365d 32720 4.8 1565 3.8 1252

Life: 2193d 166900 4.3 7099 3.5 5884

Next three dams VG & EX including Dellia EX-95!

International Holstein Auction



LORITA LUSTER-P LOVELY LADY
DAM OF LOTS 5 THRU 9

Lot 5

8 #1 CONVENTIONAL EMBRYOS

- Embryos made with conventional semen - ready to ship!
- Sire: Drewholme Logic-PP
- *Minimum starting bid: \$1,000 Per Embryo*

• *LOVELY LADY IS SPECIAL - POLLED +2941 GTPI +3.16T A2A2 BB!!*

Drewholme Logic PP

CAN 14213339 *TY *TV A1A2 BB
PTA +585M +105F +45P 80R 8/23
PTA +791NM +.29%F +.09%P
PTA +2.2PL 2.77SCS -.7DPR 1.9%DCE
PTA +2.51 +2.17UDC +1.14FLC 78R 8/23
GTPI +2884

Lorita Luster-P Lovely Lady

840 3240509942 99%RHA *PC A2A2 BB
GTPI +2941G +745M +99F +41P 81R 8/23
PTA +756NM +.24%F +.06%P
PTA +3.0PL 2.90SCS -.7DPR 1.9%DCE
PTA +3.16T +2.20UDC +2.26FLC 79R 8/23
• *Due February, 2024!*
• *Dam of Lorita Adonis PP @ AI Total ~*
He is +2964 GTPI +3.24T +2.66UDC +2.15FLC
+145 CFP +.24%F +.08%P A2A2 BB!

Lot 6

8 #1 SEXED EMBRYOS

- 8 embryos made with sexed semen - ready to ship!
- Sire: Drewholme Logic-PP
- *Minimum starting bid: \$1,000 Per Embryo*

Cherry-Lily Zip Luster-P-ET

840 3138843085 GM 12/21 *PC *TY *TV A2A2
PTA +1374M +76F +43P 99R 4/22
PTA +2.83T +2.35UDC +1.84FLC GTPI +2869G

Lorita Doc Lovely Lady

840 31360088918 99%RHA *TC *TL *TD
GTPI +2642G +502M +53F +29P 81R 8/23
PTA +3.16T +2.39UDC +2.00FLC 80R 8/23
• *She was outstanding with a beautiful mammary system and died one day fresh*

Lot 7

8 #1 SEXED EMBRYOS

- 8 embryos made with sexed semen - ready to ship!
- Sire: Drewholme Logic-PP
- *Minimum starting bid: \$1,000 Per Embryo*

DURRER DAIRY
MODESTO, CA
209-595-5315

3rd Dam

Lorita Loveman Lady-ET GP-83 VG-MS

2-01 2x 328d 18660 3.9 724 4.1 760

- *Scored in a large, commercial dairy*
- *CONTRACTED FOR ACCELERATED GENETICS!!*

4th Dam

Lortia Deman Lady-ET GP-81

• *Scored in a large, commercial dairy*

- *3 SELECT SIRE A.I. CONTRACTS!!!*
- *2 ACCELERATED GENETICS A.I. CONTRACTS!!!*

5th Dam

Crasdale Lucky Uno VG-86-CAN VG-87-MS

2-07 2x 321d 25483 4.5 1140 3.5 893

6th Dam

Gloryland-I Goldwyn Locket-ET EX-94 EEEEE 2E

6-06 2x 349d 35800 4.4 1590 3.7 1310

Life: 1485d 137901 4.6 6400 3.6 4981

Next eight dams VG or EX including EX-97 Roxy!



GLORYLAND-I GOLDWYN LOCKET-ET EX-94 2E
FOUNDATION DAM OF LOTS 5 THRU 9

Lot 8

8 #1 SEXED OR CONVENTIONAL EMBRYOS

- Mutually agreeable sire
- From first flush after calving
- *Minimum starting bid: \$1,000 Per Embryo*

Mutually Agreeable Sire

CAN 14213339 *TY *TV A1A2 BB

Lorita Luster-P Lovely Lady

840 3240509942 99%RHA *PC A2A2 BB
 GTPI +2941G +745M +99F +41P 81R 8/23

PTA +756NM +.24%F +.06%P

PTA +3.0PL 2.90SCS -.7DPR 1.9%DCE

PTA +3.16T +2.20UDC +2.26FLC 79R 8/23

• *Due February, 2024!*

• *Dam of Lorita Adonis PP @ AI Total ~*

*He is +2964 GTPI +3.24T +2.66UDC +2.15FLC
 +145 CFP +.24%F +.08%P A2A2 BB!*

Lot 9

8 #1 SEXED OR CONVENTIONAL EMBRYOS

- Mutually agreeable sire
- From second flush after calving
- *Minimum starting bid: \$1,000 Per Embryo*

Cherry-Lily Zip Luster-P-ET

840 3138843085 GM 12/21 *PC *TY *TV A2A2

PTA +1374M +76F +43P 99R 4/22

PTA +2.83T +2.35UDC +1.84FLC GTPI +2869G

Lorita Doc Lovely Lady

840 31360088918 99%RHA *TC *TL *TD

GTPI +2642G +502M +53F +29P 81R 8/23

PTA +3.16T +2.39UDC +2.00FLC 80R 8/23

• *She was outstanding with a beautiful mammary system and died one day fresh*

DURRER DAIRY
MODESTO, CA
209-595-5315

- *LOVELY LADY IS SPECIAL - POLLED +2941 GTPI +3.16T A2A2 BB!!*

3rd Dam

Lorita Loveman Lady-ET GP-83 VG-MS

2-01 2x 328d 18660 3.9 724 4.1 760

• *Scored in a large, commercial dairy*

• *CONTRACTED FOR ACCELERATED GENETICS!!*

4th Dam

Lortia Deman Lady-ET GP-81

• *Scored in a large, commercial dairy*

• *3 SELECT SIRES A.I. CONTRACTS!!!*

• *2 ACCELERATED GENETICS A.I. CONTRACTS!!!*

5th Dam

Crasdale Lucky Uno VG-86-CAN VG-87-MS

2-07 2x 321d 25483 4.5 1140 3.5 893

6th Dam

Gloryland-I Goldwyn Locket-ET EX-94 EEEEE 2E

6-06 2x 349d 35800 4.4 1590 3.7 1310

Life: 1485d 137901 4.6 6400 3.6 4981

7th Dam

Gloryland Lakota Rae-ET VG-88 DOM 2*

2-03 2x 365d 22851 3.8 858 3.5 794

Next seven dams VG or EX including EX-97 Roxy!

International Holstein Auction



**AIJA CHOICE BABY-ET
DAM OF LOTS 10 & 11**

Lot 10

6 #1 EMBYROS

- Embryos made with sexed or conventional semen
- Mutually agreeable sire
- From first flush after freshening at 2 years
- *Minimum starting bid: \$1,000 Per Embryo*

Maternal brother to Lots 10 & 11:

PolledKing *PO A2A2 BB +2826 GTPI +3.81 Type +2.96 UDC +1.71 FLC
+1137 Milk +.07% +64 F +.06 +52P! He is the first genomic tested son of Choice Baby!

Mutually Agreeable Sire

AIJA Choice Baby-ET

840 3231000226 A2A2 BB
GTPI +2683 PTA +767M +31F +39P 79R 8/23
PTA +2.3PL 2.94SCS -1.0DPR 2.6%DCE
PTA +4.13T +3.66UDC +2.32FLC 78R 8/23

- *Believed to be the highest combined Type, UDC, and FLC Female in the World over +2675 GTPI and she is A2A2 & BB!*
- *Backed by 11 generations of VG & EX dams!*
- *Due in December 2023!*
- *BABY HAS TREMENDOUS FRAME AND PERFECT UDDER PROMISE!!! SHE IS THE REAL DEAL!!!*

Lot 11

6 #1 EMBYROS

- Embryos made with sexed or conventional semen
- Mutually agreeable sire
- From second flush after freshening at 2 years
- *Minimum starting bid: \$1,000 Per Embryo*

Mutually Agreeable Sire

Siemers Fitters Choice-ET

840 3204593881 99%RHA *TL *TD A2A2 BB
PTA +534M +13F +22P 82R 8/23
PTA +4.31T +3.33UDC +2.43FLC GTPI +2434G

AIJA King-Doc Wichita-ET

CAN 13053962 EX-90-CAN EX-92-MS
GTPI +2612G +559M +21F +36P 86R 8/23
PTA +3.23T +3.07UDC +1.75FLC 83R 8/23
3-08 2x 365d 36532 4.1 1488 3.5 1290
2-01 2x 365d 31440 4.1 1301 3.7 1162

BABY SYNDICATE
C/O ED FELLERS
NAPLES, FL
913-484-4121

3rd Dam

Westcoast Comand Wisconsin-ET VG-86-CAN 3*
2-00 2x 300d 24996 4.3 1085 3.6 895

4th Dam

View-Home Drman Wsconsin-ET VG-88-CAN 8*
2-02 2x 365d 27070 4.3 1151 3.8 1014

5th Dam

Pine-Tree 2149Robst 4846-ET VG-86 DOM 3*
2-04 3x 365d 32000 4.8 1520 3.4 1096

6th Dam

Pine-Tree Zenith Sheen VG-87 VG-MS DOM
1-11 3x 305d 24500 3.9 959 3.2 786

7th Dam

Pine-Tree Martha Sheen-ET VG-85 VG-MS
1-11 3x 365d 31210 4.2 1305 3.1 968

8th Dam

Wesswood-HC Rudy Missy-ET EX-92 3E DOM
4-11 3x 365d 40880 4.1 1665 3.2 1308

Life: 1262d 119610 4.1 4885 3.2 3804

9th Dam

Wesswood Elton Mimi EX-90 GMD DOM
3-05 2x 365d 35380 3.3 1160 3.2 1121

Next three dams Very Good-87

International Holstein Auction



AIJA CHOICE BABY-ET
2ND DAM OF LOTS 12 THRU 15

Lot 12

8 #1 EMBRYOS

- Embryos made with sexed or conventional semen
- Mutually agreeable sire
- Embryos will be from Babylon's first flush
- *Minimum starting bid: \$800 Per Embryo*

Mutually Agreeable Sire

Eskdale Babylon-P

840 3266231988 *PC A2A2 BB
GTPI +2875 PTA +1417M +70F +61P 78R 8/23
PTA +693NM +.05%F +.06%P
PTA +3.3PL 2.86SCS -1.3DPR 2.7%DCE
PTA +3.13T +2.62UDC +1.45FLC 77R 8/23
PTA +200FE -0.8FI 2.6%SCE

• *POSSIBLY THE HIGHEST TYPE REMOVER-PP FEMALE IN THE BREED AND SHE IS A2A2, BB!!!*

Lot 13

8 #1 EMBRYOS

- Embryos made with sexed or conventional semen
- Mutually agreeable sire
- Embryos will be from Babylon's second flush
- *Minimum starting bid: \$800 Per Embryo*

Mutually Agreeable Sire

Stantons Remover PP

CAN 13440455 *TY *TV *PP A2A2 BB
PTA +1878M +101F +65P 83R 8/23
PTA +2.06T +1.60UDC +.83FLC GTPI +2885G

AIJA Choice Baby-ET

840 3231000226 A2A2 BB
GTPI +2683 PTA +767M +31F +39P 79R 8/23
PTA +2.3PL 2.94SCS -1.0DPR 2.6%DCE
PTA +4.13T +3.66UDC +2.32FLC 78R 8/23

• *Believed to be the highest combined Type, UDC, and FLC Female in the World over +2675 GTPI and she is A2A2 & BB!*

BABYLON SYNDICATE
C/O RASBERRY FUTURES
GIG HARBOR, WA

3rd Dam

AIJA King-Doc Wichita-ET EX-90-CAN
3-08 2x 365d 36532 4.1 1488 3.5 1290

4th Dam

Westcoast Comand Wisconsin-ET VG-86-CAN 3*
2-00 2x 300d 24996 4.3 1085 3.6 895

5th Dam

View-Home Drman Wsconsin-ET VG-88-CAN 8*
2-02 2x 365d 27070 4.3 1151 3.8 1014

6th Dam

Pine-Tree 2149Robst 4846-ET VG-86 DOM 3*
2-04 3x 365d 32000 4.8 1520 3.4 1096

7th Dam

Pine-Tree Zenith Sheen VG-87 VG-MS DOM
1-11 3x 305d 24500 3.9 959 3.2 786

8th Dam

Pine-Tree Martha Sheen-ET VG-85 VG-MS
1-11 3x 365d 31210 4.2 1305 3.1 968

9th Dam

Wesswood-HC Rudy Missy-ET EX-92 3E DOM
4-11 3x 365d 40880 4.1 1665 3.2 1308

Life: 1262d 119610 4.1 4885 3.2 3804

Next four dams VG & EX!

International Holstein Auction



AIJA KING DOC WICHITA-ET EX-90-CAN
3RD DAM OF LOTS 12 THRU 15

Lot 14

8 #1 EMBYROS

- Embryos made with sexed or conventional semen
- Mutually agreeable sire
- Embryos will be from Queen's first flush
- *Minimum starting bid: \$800 Per Embryo*

• *POLLED QUEEN IS A KNOCKOUT!!! SUPER FANCY WITH +4.26 TYPE!!!*

Mutually Agreeable Sire

Eskdale Polled Queen P-ET

840 3266231905 *PO A2A2 BB
GTPI +2778 PTA +920M +58F +43P 78R 8/23
PTA +500NM +.08%F +.05%P
PTA +1.5PL 2.95SCS -2.0DPR 2.3%DCE
PTA +4.26T +3.43UDC +2.12FLC 77R 8/23
PTA +153FE -1.5FI 2.2%SCE

- *Believed to be the only polled female in the breed over +4.25 Type, +3.40 UDC, +2.10 FLC, +2775 GTPI and A2A2 & BB!!*

Lot 15

8 #1 EMBYROS

- Embryos made with sexed or conventional semen
- Mutually agreeable sire
- Embryos will be from Queen's second flush
- *Minimum starting bid: \$800 Per Embryo*

Mutually Agreeable Sire

Eskdale Lustrous

840 3214540632 *PP *TR *A2A2 *BB
PTA +736M +71F +33P 82R 8/23
PTA +3.28T +2.61UDC +1.85FLC GTPI +2719G

AIJA Choice Baby-ET

840 3231000226 A2A2 BB
GTPI +2683 PTA +767M +31F +39P 79R 8/23
PTA +2.3PL 2.94SCS -1.0DPR 2.6%DCE
PTA +4.13T +3.66UDC +2.32FLC 78R 8/23

- *Believed to be the highest combined Type, UDC, and FLC Female in the World over +2675 GTPI and she is A2A2 & BB!*

POLLED QUEEN SYNDICATE
C/O RASBERRY FUTURES
GIG HARBOR, WA

3rd Dam

AIJA King-Doc Wichita-ET EX-90-CAN
3-08 2x 365d 36532 4.1 1488 3.5 1290

4th Dam

Westcoast Comand Wisconsin-ET VG-86-CAN 3*
2-00 2x 300d 24996 4.3 1085 3.6 895

5th Dam

View-Home Drman Wsconsin-ET VG-88-CAN 8*
2-02 2x 365d 27070 4.3 1151 3.8 1014

6th Dam

Pine-Tree 2149Robst 4846-ET VG-86 DOM 3*
2-04 3x 365d 32000 4.8 1520 3.4 1096

7th Dam

Pine-Tree Zenith Sheen VG-87 VG-MS DOM
1-11 3x 305d 24500 3.9 959 3.2 786

8th Dam

Pine-Tree Martha Sheen-ET VG-85 VG-MS
1-11 3x 365d 31210 4.2 1305 3.1 968

9th Dam

Wesswood-HC Rudy Missy-ET EX-92 3E DOM
4-11 3x 365d 40880 4.1 1665 3.2 1308

Life: 1262d 119610 4.1 4885 3.2 3804

Next four dams VG & EX!

International Holstein Auction



GUIDED-PATH RUBICON 2171 VG-86
5TH DAM OF LOTS 16 & 17

Lot 16

8 #1 EMBRYOS

- Embryos made with sexed or conventional semen
- Mutually agreeable sire
- Embryos will be from Lambent's first flush
- *Minimum starting bid: \$900 Per Embryo*

Mutually Agreeable Sire

Ar-Joy Lustrous Lambent-PP-ET

840 3269395851 *PP A2A2 BB
GTPI +2845 +760M +86F +46P 79R 8/23
PTA +706NM +.20%F +.08%P
PTA +2.42T +2.09UDC +1.19FLC 78R 8/23

- *Maternal sister to Breed's #1 GTPI PP Sire @ Select +3022 GTPI +169CFP \$922NM*
- *Full sister to LISZT-PP A2A2 BB @ AI Total +2817 GTPI +2.85 Type +2.48 UDC +1.56 FLC*
- *Maternal sister to CLEARCUT PP A1A2 @ St Jacobs +2929 GTPI +1166M +137CFP*
- *A BEAUTIFUL, LONG, STYLISH, EXTRA FANCY HOMOZYGOUS POLLED EARLY LUSTROUS PP DAUGHTER!!!*

Lot 17

8 #1 EMBRYOS

- Embryos made with sexed or conventional semen
- Mutually agreeable sire
- Embryos will be from Lambent's second flush
- *Minimum starting bid: \$900 Per Embryo*

Mutually Agreeable Sire

Eskdale Lustrous

840 3214540632 *PP *TR *A2A2 *BB
PTA +736M +71F +33P 82R 8/23
PTA +3.28T +2.61UDC +1.85FLC GTPI +2719G

Ar-Joy CU Pari Alyssa-ET

840 3221230902 99%RHA *PO A1A2 BB
GTPI +2937G +937M +83F +53P 81R 8/23
PTA +779NM +.16%F +.08%P
PTA +3.9PL 2.943CS -.3DPR 1.8%DCE
PTA +2.28T +2.34UDC +1.42FLC 80R 8/23

LAMBENT SYNDICATE
C/O ED FELLERS
NAPLES, FL
913-484-4121

3rd Dam

Ar-Joy CU Drast Apple-P-ET VG-86 VG-MS *PO
1-10 3x 365d 29490 4.8 1408 4.0 1171

4th Dam

Guided-Path Jedi Aruba VG-86 VG-MS
2-00 3x 365d 33090 3.8 1249 3.7 1211

5th Dam

Guided-Path Rubicon 2171 VG-86 VG-MS
3-09 2x 362d 32350 4.4 1422 3.3 1059

6th Dam

Guided-Path Epic 1897 VG-85
4-11 2x 359d 34850 3.4 1169 3.2 1120
Life: 1967d 170080 3.2 5482 3.2 5467

7th Dam

Guided-Path Marcellus 1668 GP-83
4-04 2x 342d 29900 3.6 1090 3.1 932

8th Dam

Guided-Path Jabez 1110 VG-86 VG-MS
2-00 2x 344d 22920 3.7 838 3.0 697
Life: 1613d 118680 3.6 4265 3.1 3686

9th Dam

Guided-Path Durham Aster 895 VG-85
6-07 2x 365d 34210 3.6 1221 3.3 1129
Life: 2007d 158070 3.6 5720 3.2 5040

International Holstein Auction



**VALIANT RBLS MUFFLER-RED-ET *PO
DAM OF LOTS 18 THRU 21**

*Muffler-Red *PO is absolutely stunning!*

Lot 18

8 #1 CONVENTIONAL EMBRYOS

- Embryos made with conventional semen - ready to ship!
- Sire: Drewholme Logic PP
- *Minimum starting bid: \$1,000 Per Embryo*

Drewholme Logic PP

CAN 14213339 *TY *TV A1A2 BB
PTA +585M +105F +45P 80R 8/23
PTA +791NM +.29%F +.09%P
PTA +2.2PL 2.77SCS -2.0DPR 1.9%DCE
PTA +2.51T +2.17UDC +1.14FLC 78R 8/23
GTPI +2884G

Valiant RbIs Muffler-Red-ET

840 3231000266 *PO A1A2 BB
GTPI +2800G PTA +934M +60F +40P 81R 8/23
PTA +5.3PL 2.75SCS +.1DPR 2.2%DCE
PTA +2.09T +1.74UDC +1.70FLC 80R 8/23
GPA LPI +3483 Conf +7 8/23

- *Former #1 GTPI Red Polled Female in the Breed!*

Lot 19

5 #1 SEXED EMBRYOS

- Embryos made with sexed semen - ready to ship!
- Sire: AOT Redeye Haze-P-Red-ET
- *Minimum starting bid: \$1,000 Per Embryo*

AOT Redeye Haze-P-Red-ET

840003232427677 *CD *PO *RC A2A2
PTA +1003M +76F +45P 81R 8/23
PTA +811NM +.13%F +.05%P
PTA +4.4PL 2.67SCS -0.2DPR 2.8%DCE
PTA +2.34T +1.85UDC +.91FLC 80R 8/23
GTPI +2855G

Hoogerhorst DG OH Rubels-Red

NLD 679520401 *TC *TY *TV
PTA +1021M +68F +47P 96R 8/23
PTA +2.05T +1.56UDC +1.26FLC GTPI +2712G

Aprilday Luster Muffin-ET

840 3207031363 VG-85-2YR-CAN VG-87-MS *RC *PP
GTPI +2675 +822M +39F +26P 83R 8/23
PTA +1.51T +1.29UDC +1.51FLC GLPI +3304
2-02 Rx 365d 28417 4.2 1199 3.2 922

- *Former #1 Homozygous Poled Red Carrier GTPI & GLPI Female in the Breed! 2 Sons at AI Total!*

**MUFFLER SYNDICATE
C/O ED FELLERS
NAPLES, FL
913-484-4121**

3rd Dam

Aprilday P Margarita-Red-ET GP-83 *PP *TC
2-03 3x 333d 27410 4.4 1195 3.2 871

4th Dam

Aprilday Jax Martini-Red-ET VG-87 VVVV *PC
3-00 3x 305d 28830 4.2 1223 3.3 953

5th Dam

Ms Cash Coin Margie-ET VG-85 *RC

6th Dam

Palmyra M-O-M Manhattan-ET VG-85 *RC
2-04 2x 365d 32440 4.2 1377 3.5 1124

7th Dam

Debaugh Rdman Manhattan-ET EX-91 *RC
3-03 2x 365d 32120 4.7 1511 3.2 1038
Life: 1619d 106830 4.5 4842 3.5 3732

8th Dam

Sutton Outside Mango VG-87 VG-MS DOM
2-11 2x 365d 32460 4.3 1385 3.0 978

9th Dam

Sutton Gilbert Marie EX-90 VEVVE 2E
5-06 3x 365d 41910 3.4 1411 2.8 1158
Life: 2382d 223540 3.6 8105 2.9 6308

Next four dams VG & EX

International Holstein Auction



APRILDAY LUSTER MUFFIN-ET *PP *RC VG-85-CAN VG-87-MS
2ND DAM OF LOTS 18 THRU 21

Lot 20

6 #1 CONVENTIONAL EMBRYOS

- Embryos made with conventional semen - ready to ship!
- Sire: 3Star Oh Ranger-Red-ET
- Minimum starting bid: \$1,000 Per Embryo

3Star Oh Ranger Red-ET

NLD 688600952 *TC *TP A1A2 BB
PTA +811M +70F +40P 82R 8/23
PTA +887NM +.13%F +.05%P
PTA +6.5PL 2.59SCS -.03DPR 2.4%DCE
PTA +1.93T +1.60UDC +1.37FLC 79R 8/23
GTPI +2875G

Valiant Rbls Muffler-Red-ET

840 3231000266 *PO A1A2 BB
GTPI +2800G PTA +934M +60F +40P 81R 8/23
PTA +5.3PL 2.75SCS +.1DPR 2.2%DCE
PTA +2.09T +1.74UDC +1.70FLC 80R 8/23
GPA LPI +3483 Conf +7 8/23

- Former #1 GTPI Red Polled Female in the Breed!

Lot 21

8 #1 CONVENTIONAL EMBRYOS

- Embryos made with conventional semen - ready to ship!
- Sire: Siemers Wolf Hulu 37006-ET *RC
- Minimum starting bid: \$1,000 Per Embryo

Siemers Wolf Hulu 37006-ET

840 3245702863 99%RHA *RC *TP *TC *TY *TV
PTA +983M +58F +48P 79R 8/23
PTA +666NM +.07%F +.06%P
PTA +3.5PL 2.74SCS +.2DPR 2.0%DCE
PTA +3.91T +3.27UDC +1.62FLC 78R 8/23
GTPI +2911G

Hoogerhorst DG OH Rubels-Red

NLD 679520401 *TC *TY *TV
PTA +1021M +68F +47P 96R 8/23
PTA +2.05T +1.56UDC +1.26FLC GTPI +2712G

Aprilday Luster Muffin-ET

840 3207031363 VG-85-2YR-CAN VG-87-MS *RC *PP
GTPI +2675 +822M +39F +26P 83R 8/23
PTA +1.51T +1.29UDC +1.51FLC GLPI +3304
2-02 Rx 365d 28417 4.2 1199 3.2 922

- Former #1 Homozygous Polled Red Carrier GTPI & GLPI Female in the Breed! 2 Sons at AI Total!

MUFFLER SYNDICATE
C/O ED FELLERS
NAPLES, FL
913-484-4121

3rd Dam

Aprilday P Margarita-Red-ET GP-83 *PP *TC
2-03 3x 333d 27410 4.4 1195 3.2 871

4th Dam

Aprilday Jax Martini-Red-ET VG-87 VVVVV *PC
3-00 3x 305d 28830 4.2 1223 3.3 953

5th Dam

Ms Cash Coin Margie-ET VG-85 *RC

6th Dam

Palmyra M-O-M Manhattan-ET VG-85 *RC
2-04 2x 365d 32440 4.2 1377 3.5 1124

7th Dam

Debaugh Rdman Manhattan-ET EX-91 *RC
3-03 2x 365d 32120 4.7 1511 3.2 1038
Life: 1619d 106830 4.5 4842 3.5 3732

8th Dam

Sutton Outside Mango VG-87 VG-MS DOM
2-11 2x 365d 32460 4.3 1385 3.0 978

9th Dam

Sutton Gilbert Marie EX-90 VEVVE 2E
5-06 3x 365d 41910 3.4 1411 2.8 1158
Life: 2382d 223540 3.6 8105 2.9 6308

Next four dams VG & EX

International Holstein Auction



ESKDALE LUSTRUS-P 11025-ET
DAM OF LOTS 22 & 23



MS AIJA MIRAND TOPEKA-ET UDDER
2ND DAM OF LOTS 22 & 23

Lot 22

8 #1 EMBYROS

- Embryos made with sexed or conventional semen
- Mutually agreeable sire
- Embryos will be from 11025'S first flush
- *Minimum starting bid: \$800 Per Embryo*

Mutually Agreeable Sire

Eskdale Lustrus-P 11025-ET

840 3266231161 *PC*RC A2A2 AB
GTPi +2698G PTA +1024M +43F +33P 79R 8/23
PTA +511NM +.01%F +.00%P
PTA +3.2PL 2.83SCS +.1DPR 2.0%DCE
PTA +3.31T +2.55UDC +1.32FLC 78R 8/23
PTA +113FE +0.5FI 1.8%SCE
• *CRAZY FANCY POLLED RED CARRIER EARLY LUSTROUS PP DAUGHTER!!!*
• *Two full brothers sold or leased to AI*

Lot 23

8 #1 EMBYROS

- Embryos made with sexed or conventional semen
- Mutually agreeable sire
- Embryos will be from 11025's 2nd flush
- *Minimum starting bid: \$800 Per Embryo*

Mutually Agreeable Sire

Eskdale Lustrous

840 3214540632 *PP*TR*A2A2*BB
PTA +736M +71F +33P 82R 8/23
PTA +3.28T +2.61UDC +1.85FLC GTPi +2719G
Ms AIJA Mirand Topeka-ET
840 3214540436 Very Good-86 VG-MS @ 3-02
GTPi +2524 +1086M +39F +22P 82R 8/23
PTA +2.5PL 2.91SCS -1.4DPR 2.4%DCE
PTA +3.17T +2.44UDC +1.19FLC 82R 8/23

SNAKE RIVER DAIRY
MELBA, ID
RASBERRY FUTURES
GIG HARBOR, WA

3rd Dam

AIJA King-Doc Wichita-ET EX-90-CAN
3-08 2x 365d 36532 4.1 1488 3.5 1290

4th Dam

Westcoast Comand Wisconsin-ET VG-86-CAN 3*
2-00 2x 300d 24996 4.3 1085 3.6 895

5th Dam

View-Home Drman Wsconsin-ET VG-88-CAN 8*
2-02 2x 365d 27070 4.3 1151 3.8 1014

6th Dam

Pine-Tree 2149Robst 4846-ET VG-86 DOM 3*
2-04 3x 365d 32000 4.8 1520 3.4 1096

7th Dam

Pine-Tree Zenith Sheen VG-87 VG-MS DOM
1-11 3x 305d 24500 3.9 959 3.2 786

8th Dam

Pine-Tree Martha Sheen-ET VG-85 VG-MS
1-11 3x 365d 31210 4.2 1305 3.1 968

9th Dam

Wesswood-HC Rudy Missy-ET EX-92 3E DOM
4-11 3x 365d 40880 4.1 1665 3.2 1308

Life: 1262d 119610 4.1 4885 3.2 3804
Next four dams VG & EX!

International Holstein Auction



Lot 24

8 #1 EMBYROS

- Embryos made with sexed or conventional semen
- Mutually agreeable sire
- Embryos will be from 12033's first flush
- *Minimum starting bid: \$800 Per Embryo*

Mutually Agreeable Sire

TLU Figaro 12033-ET

840 3271802034 99%RHA A2A2 AB *TC *TP
GTPI +3080 PTA +816M +93F +39P 79R 8/23
PTA +910NM +.21%F +.05%P
PTA +5.8PL 2.70SCS +1.5DPR 2.1%DCE
PTA +2.77T +2.73UDC +1.55FLC 77R 8/23
PTA +212FE +1.9FI 2.7%SCE

- *SHE HAS A TOP TO BOTTOM, ABSOLUTELY AMAZING GENOMIC PROFILE THAT SHOULD MAKE SOME INCREDIBLE NEXT GENERATION MALES FOR THE AI INDUSTRY AND BREED LEADING FEMALES THAT DO THE SAME!!*

Lot 25

8 #1 EMBYROS

- Embryos made with sexed or conventional semen
- Mutually agreeable sire
- Embryos will be from 12033's second flush
- *Minimum starting bid: \$800 Per Embryo*

Mutually Agreeable Sire

OCD Perfect Figaro-ET

840 3223868608 *TR *TP *TC *TY *TV
PTA +1028M +95F +50P 82R 8/23
PTA +2.34T +2.52UDC +1.53FLC GTPI +3066G

TLU Perfect 9170

840 3234076769 98%RHA
GTPI +2851 PTA +1187M +68F +45P 81R 8/23
PTA +686NM +.08%F +.03%P
PTA +3.6PL 3.01SCS +.6DPR 1.9%DCE
PTA +2.73T +1.98UDC +1.58FLC 79R 8/23

- *CANDID PHOTOS AVAILABLE UPON REQUEST*

SNAKE RIVER DAIRY MELBA, ID RASPBERRY FUTURES GIG HARBOR, WA

- *THE ONLY FEMALE IN THE BREED OVER +3080 GTPI +930NM +2.75T & +1.5DPR!*
- *SHE IS A2A2 +5.8PL +1.9FI 2.70SCS +3.9HCR +3.0CCR +132CFP +2.73UDC +1.55FLC +1.34 STATURE!!*

- *SHE HAS A TOP TO BOTTOM, ABSOLUTELY AMAZING GENOMIC PROFILE THAT SHOULD MAKE SOME INCREDIBLE NEXT GENERATION MALES FOR THE AI INDUSTRY AND BREED LEADING FEMALES THAT DO THE SAME!!*

- *PERFECT 9170 IS ONE OF SNAKE RIVERS FINEST YOUNG COWS!! A POTENTIAL 86/87 TWO-YEAR-OLD WITH HIGH VG OR EX MAMMARY SYSTEM!!! BLACK & SILKY WITH A SENSATIONAL UDDER!!!*

3rd Dam

TLU Coffee 7071 VG-85 VG-MS

1-08 3x 365d 29540 4.0 1195 3.3 977

4th Dam

TLU Duke 4179

1-10 3x 365d 24840 4.6 1134 3.5 878

International Holstein Auction



APRILDAY LUSTER MUFFIN-ET *PP *RC VG-85-CAN VG-87-MS
2ND DAM OF LOT 26



VALIANT MCDON BERRY-RED-ET
DAM OF LOT 26

Lot 26

BERRY RED PO SYNDICATE
C/O ED FELLERS
NAPLES, FL
913-484-4121

Siemers Wolf Hulu 37006-ET

840 3245702863 99%RHA *RC *TP *TC *TY *TV
PTA +983M +58F +48P 79R 8/23
PTA +666NM +.07%F +.06%P
PTA +3.5PL 2.74SCS +.2DPR 2.0%DCE
PTA +3.91T +3.27UDC +1.62FLC 78R 8/23
GTPI +2911G

Valiant McDon Berry-Red-ET

840 3248309897 99%RHA A2A2 AB *TC
GTPI +2754 PTA +490M +59F +22P 79R 8/23
PTA +626NM +.14%F +.02%P
PTA +4.2PL 2.72SCS +1.3DPR 2.5%DCE
PTA +2.19T +2.27UDC +1.56FLC 77R 8/23
PTA +126FE +1.4FI 2.3%SCE

8 #1 SEXED EMBRYOS

- Embryos made with sexed semen - ready to ship!
- Minimum starting bid: \$800 Per Embryo

Maternal sister to Berry-Red

Valiant Rbbs Muffler-Red-ET *PO A1A2 BB
GTPI +2800G PTA +934M +60F +40P 81R 8/23
PTA +5.3PL 2.75SCS +.1DPR 2.2%DCE
PTA +2.09T +1.74UDC +1.70FLC 80R 8/23

- Former #1 GTPI Red Polled Female in the Breed!

Aprilday McDonald-P-Red-ET

840 3201598569 A1A2 AB *PC *TC *TY
PTA +324M +50F +21P 82R 8/23
PTA +2.32T +2.73UDC +1.56FLC GTPI +2731G

Aprilday Luster Muffin-ET

840 3207031363 VG-85-2YR-CAN VG-87-MS *RC *PP
GTPI +2675 +822M +39F +26P 83R 8/23
PTA +1.51T +1.29UDC +1.51FLC GLPI +3304
2-02 Rx 365d 28417 4.2 1199 3.2 922

- Former #1 Homozygous Poled Red Carrier GTPI & GLPI Female in the Breed! 2 Sons at AI Total!

3rd Dam

Aprilday P Margarita-Red-ET GP-83 *PP *TC
2-03 3x 333d 27410 4.4 1195 3.2 871

4th Dam

Aprilday Jax Martini-Red-ET VG-87 VVVVV *PC
3-00 3x 305d 28830 4.2 1223 3.3 953

5th Dam

Ms Cash Coin Margie-ET VG-85 *RC

6th Dam

Palmyra M-O-M Manhattan-ET VG-85 *RC
2-04 2x 365d 32440 4.2 1377 3.5 1124

7th Dam

Debaugh Rdman Manhattan-ET EX-91 *RC
3-03 2x 365d 32120 4.7 1511 3.2 1038

Life: 1619d 106830 4.5 4842 3.5 3732

8th Dam

Sutton Outside Mango VG-87 VG-MS DOM
2-11 2x 365d 32460 4.3 1385 3.0 978

9th Dam

Sutton Gilbert Marie EX-90 VEVVE 2E
5-06 3x 365d 41910 3.4 1411 2.8 1158

Life: 2382d 223540 3.6 8105 2.9 6308

10th Dam

Sutton Jolt Lil May-ET VG-87 EVEV
6-05 2x 365d 30340 4.0 1205 3.0 907

Life: 1866d 141060 4.2 5947 3.1 4331

Next three dams VG & EX

