

FUN @ SUN
in the New York
Picnic Style



Friday, July 19, 2019 • 2:00 PM
Hudson Falls, NY

Ideal Dairy Farms, Home of Cookiecutter Holsteins

Welcome to Ideal Dairy Farms located in Hudson Falls for the New York state picnic that has been the home to the Dickinson family since 1884! It is a pleasure to host this yearly event that brings us all together to socialize, reminisce and catch up on good friendships! A little about us: Ideal Dairy Farms puts the production of quality milk and sought-after genetics at the top of their priority list. John and Denise Dickinson oversee the operation together with their daughter, Crystal Grimaldi, and Kyle and Luke Getty. Ideal Dairy Farms now encompasses 4,400 acres with a herd of 2,800 cows, of which about 2,300 are Registered Holsteins and carry the Cookiecutter prefix. The farm employs 30 people full time. With a RHA of 30,495M 3.8F 1163 3.1P 943, the herd produces over 200,000 pounds of milk a day and proud of our team effort that produces it!

We are also excited about hosting the Fun in the Sun sales series here on the farm in conjunction with the picnic! Cookiecutter and breeders from across the state and North America have once again offered a great line-up of cattle that epitomize the quality that have become the standard for the Fun in the Sun sales series. We hope you will join us for what promises to be a fun event celebrating great genetics and better people.



Cookiecutter Partners



Ideal Dairy Family

FUN in the SUN NEW YORK PICNIC STYLE

Sales Staff

Dave Rama..... 607-435-0792
Rick VerBeek.....614-580-8662
Scott Culbertson... 507-923-1881
Tom Harkenrider.. 607-729-3160
Ryan Matheron..... 209-652-3511
Abe Light..... 315-651-7410
Kelly Reynolds..... 920-728-1596

Friday, July 19, 2019

Hudson Falls, NY

NY Holstein Picnic: 11:00AM – 1:00PM:

Order your tickets immediately. \$15/each. Res. due by July 1st
-print reservation form at: <https://nyholsteinevents.weebly.com>

Happy Hour: Begins at 1:00PM

Fun in Sun Sale: Begins at 2:00PM

Sale Clerk and Insurance: Merry Rama....607-435-0804....merryrama@cattlexchange.com



*View/bid online in Real Time
at www.cowbuyer.com*

*Bidders must pre-register & be pre-approved.

*Contact Aaron Tompkins if you need assistance at 336-363-4639

Terms of Sale: *We are not a bank & we do not finance cattle! Buyers will be invoiced immediately by email with overnight payments expected by money wires or good check sent by priority mail! We want a lot of participation from buyers who understand that proceeds need to be issued immediately! Buyers of embryos are responsible for their own shipping charges and expected to contact sellers direct to arrange for shipment after payment. On lots where cattle are born or on aspirations, buyers are expected to pay 100% down sale day. Buyers of live cattle should make immediate arrangements with sellers for transportation after payment has been made to sale manager.*

Directions: GPS address: 239 Vaughn Rd, Hudson Falls, NY 12534

Sale & Picnic Hosted by:

Sale Managed By:

Ideal Dairy LLC & Cookiecutter Holsteins

239 Vaughn Rd, Hudson Falls, NY 12534

518-858-6156 Denise

518-424-5880 Luke

qbholsteins@gmail.com



Dave & Merry Rama

4236 Co. Hwy. 18, Delhi, NY 13753

Phone: 607-746-2226

E-mail: daveramasr@cattlexchange.com

Website: www.cattlexchange.com

Visit us at facebook.com/Thecattleexchange

PA Auctioneer License #AU-002463-E

Fun in the Sun ~ NY PICNIC STYLE



Eildon-Tweed Charisma-ET VG-88 VEG+E

1-09 326 27510 4.9 1343 3.7 1022

(4th Dam of Lot 1)

LOT 1

Eildon-Tweed D Chara 3B1-ET

3205618269 99%RHA-I
Born 3/21/19 5/19 PTA +2952GTPI
+1102M +.18% +92F +.08% +56P
+992NM\$ +7.9PL +2.1DPR 2.70SCS
+3.05T +3.75UDC +1.96FLC
+193FE +2.5FI 7.1%SCE
+1035CMS\$

#1 GTPI Disc Jockey worldwide!

#1 UDC heifer over 2900 GTPI

*Top 20 GTPI female of the breed!

*Unique sire stack!

*Highest GTPI heifer to ever sell at public auction!

Eildon Tweed Farm, LLC

1253 Eastern Ave.
Amsterdam, NY 12010
518-882-6684

Claynook Discjockey-ET

12731113C 4/19 PTA +2838GTPI
+905M +.17% +82F +.07% +46P
+851NM\$ +6.4PL +2.5DPR 2.62SCS
+3.35T +3.90UDC +1.58FLC 75%R
Fortune X VG-86 Monterey

Eildon-Tweed R Chara 3B-ET

3145999855 4/19 PTA +2693GTPI
+1049M +69F +49P +822NM\$ +6.3PL
+2.4DPR +1.99T +2.60UDC +1.77FLC
-recently fresh and doing well
Sire: Fairmont Bayont Rockstar-ET

2nd Dam:

Eildon-Tweed Rubic Chara 3
VG-85 +V++V
1-09 326 27510 4.9 1343 3.7 1022

3rd Dam:

Eildon-Tweed J Chara-ET GP-82

4th Dam: (Pictured above)
Eildon-Tweed Charisma-ET
VG-88 VEG+E
4-08 363 37480 3.8 1412 3.4 1279
Lifetime 161200 4.0 6506 3.5 5596

5th Dam:

Eildon-Tweed Bow Ch3-ET
VG-87 VVVVV
2-02 365 33280 3.8 1253 3.2 1052

6th Dam:

Eildon-Tweed Chapter 3-ET
VG-87 EVVVV DOM

7th Dam:

Eildon-Tweed BWM Chaptr-ET
VG-86 VV+VV GMD
3-05 365 45030 3.7 1680 3.4 1515
Lifetime 115190 3.7 4265 3.3 3786

8th Dam:

Eildon-Tweed Ltz Chapel-ET
VG-85 VEVG+
3-02 365 44750 3.9 1729 3.4 1525

9th Dam:

Eildon-Tweed-R Wels Chrm-ET
VG-85 GVVVV GMD-DOM
2-02 365 34370 3.5 1186 3.3 1132

10th Dam:

Tidy-Brook Cel Charm-ET
VG-86 +E+V GMD-DOM
4-03 365 34740 4.0 1383 3.5 1208

11th Dam:

Tidy-Brook Shelby Elton-ET
EX-91 EEEEEV GMD-DOM
5-03 365 36270 3.2 1146 3.4 1245

12th Dam:

Tidy-Brook Sally Ned Boy
VG-85 VVV+ GMD-DOM
3-10 365 41455 3.3 1379 3.3 1349

Han Hopman

Fun in the Sun ~ NY PICNIC STYLE



Morningview Shfl Lucy-ET EX-90,2E VUEVE DOM

6-11 365 42650 3.3 1407 3.0 1281

(5th Dam of Lot 2)

LOT 2

Morningview 6541-ET

3206069773 99%RHA-I
Born 4/14/19 6/19 PTA +2912GTPI
+1413M +.20% +110F +.08% +65P
+1060NMS +7.0PL +.7DPR 2.56SCS
+1.86T +2.34UDC +1.69FLC
+251FE +1.4FI 6.7%SCE
+1106CMS

#3 CMS & #4 GTPI & NMS Solution

***Top 100 TPI and CMS in the breed!**

Tom Schmitt

21501 Cottage Hill Rd
Durango, IA 52039
563-542-5590

Fustead S-S-I Solution-ET

3139490455 4/19 PTA +2870GTPI
+2024M +.12% +110F +.02% +68P
+1030NMS +7.1PL -.3DPR 2.63SCS
+2.08T +1.94UDC +1.95FLC 76%R
Frazzled X VG-85 DOM Rubicon

Morningview 5516-ET

3140039050 4/19 PTA +2652GTPI
+657M +63F +39P +788NMS +6.4PL
+2.5DPR +1.84T +2.62UDC +1.19FLC
-injured & died as bred heifer
Sire: Leaninghouse King Abel-ET

2nd Dam:

Morningview Yoder 4494-ET
GP-83 ++GGV
2-02 297 24820 4.7 1174 3.7 917

3rd Dam:

Morningview Uno Lee-ET
VG-88 VEE+V
3-05 365 36900 4.0 1482 3.1 1155

4th Dam:

Morningview GD Lindsay-ET
EX-91,2E VEEVE
4-10 365 32430 4.2 1361 3.3 1059
Lifetime 145220 4.0 5797 3.4 4873

5th Dam: (Pictured above)

Morningview Shfl Lucy-ET
6-00 EX-90,2E VUEVE DOM
6-11 365 42650 3.3 1407 3.0 1281
Lifetime 182230 3.6 6543 3.3 6045

6th Dam:

Morningview Oman Libby-ET
VG-86 VVVVV DOM
4-00 365 36980 4.4 1634 3.7 1365
Lifetime 188800 4.5 8416 3.7 7009

7th Dam:

Crockett-Acres Drham Mae-ET
VG-87 VVVVV GMD-DOM
2-04 365 28760 4.3 1294 3.4 1026

8th Dam:

Wauregan Maebell-ET
EX-91,2E VEEVE GMD-DOM
2-06 365 36440 4.1 1493 3.5 1306

9th Dam:

Whittier-Farms Lead Mae-ET
EX-95,3E EX-MS GMD-DOM
8-07 357 41270 4.8 1962 3.5 1440
Lifetime 126960 4.3 5473 3.6 4597

10th Dam:

Raymau Bstar Monica-ET
VG-89, EX-MS DOM

11th Dam: Juniper Jason Maria-ET
VG-87, EX-MS DOM
2-03 365 20260 4.3 868 3.6 736

12th Dam thru 15th Dam all VG or EX

Han Hopman

Fun in the Sun ~ NY PICNIC STYLE



**Cookiecutter Sshot Honor-ET
UG-85 UU++U**

2-06 365 33200 4.5 1480 3.7 1212
(2nd Dam of Lots 3 & 20)



**Cookiecutter Honorifics-ET
UG-85 +U++U
(Dam of Lot 3)**

***Selling buyer's choice
of Lots 3A & 3B**

Cookiecutter Holsteins
239 Vaughn Road
Hudson Falls, NY 12839
518-858-6156

LOT 3A #6589

Cookiecutter Hilmar-ET

3200123070 99%RHA-I
Born 3/15/19 4/19 PTA +2901GTPI
+1131M +.12% +75F +.08% +58P
+981NMS\$ +9.3PL +4.1DPR 2.41SCS
+1.55T +2.34UDC +1.30FLC
+176FE +4.4FI 7.2%SCE +1033CMS

#3 GTPI Riveting Daughter

LOT 3B #6598

Cookiecutter Hiacinth-ET

3200123079 99%RHA-I
Born 3/17/19 4/19 PTA +2853GTPI
+1743M +.17% +114F +.10% +81P
+997NMS\$ +5.7PL +.0DPR 2.83SCS
+2.12T +1.72UDC +1.07FLC
+281FE +.9FI 7.1%SCE +1047CMS

#4 NMS & CMS Tahiti Daughter.

#1 Protein Tahiti.

*Top 20 Feed Efficiency heifer

*Top 100 CFP heifer

Sire of Lot 3A:

S-S-I BG Frzzld Riveting-ET

3133120549 4/19 PTA +2896GTPI
+1319M +.10% +77F +.05% +55P
+987NMS\$ +9.2PL +3.5DPR 2.46SCS
+1.95T +2.58UDC +1.51FLC 75%R
Frazzled X VG-87 Profit

Sire of Lot 3B:

De-Su Frazz Tahiti 14104-ET

3141559498 4/19 PTA +2837GTPI
+2033M +.10% +105F +.04% +73P
+1003NMS\$ +6.8PL +1.6DPR 2.88SCS
+1.92T +1.72UDC +1.21FLC 76%R
Frazzled X GP-81 DOM Delta

Dam of Lots 3A & 3B:

Cookiecutter Honorifics-ET

2-05 VG-85 +V++V 3139198391
4/19 PTA +2640GTPI +849M +78F
+56P +779NMS\$ +5.7PL +9DPR
+1.78T +1.85UDC +1.08FLC
1-11 183 15410 4.6 708 3.4 523 RIP
Sire: Wa-Del Yoder Bandares-ET
(Pictured above)

2nd Dam: (Pictured above)
Cookiecutter Sshot Honor-ET
VG-85 VV++V
2-06 365 33200 4.5 1480 3.7 1212

3rd Dam:
Cookiecutter Jacey Hacey-ET
VG-87 VV++E
3-00 305 40580 2.9 1177 3.2 1290
Lifetime 143360 3.3 4749 3.1 4470
**9th generation EX mammary!*

4th Dam:
Cookiecutter Mom Halo-ET
2-09 VG-88 VV+VE DOM
2-00 365 35280 5.2 1819 3.7 1304
**#3 Int'l Global Cow of the Year 2018*

5th Dam:
Cookiecutter Gld Holler-ET
VG-88 VVV+E DOM
2-03 365 40730 3.5 1410 3.1 1249
**Nom. Int'l Cow of the Year 2016*

6th Dam:
Ms Kings-Rnsm Champ Haley-ET
EX-90 EEVVE GMD-DOM
3-11 365 43690 3.7 1625 3.1 1357

7th Dam: Regancrest-JDV Hanna-ET
EX-90 EEVVE
4-07 365 45110 4.3 1922 3.2 1449
8th Dam: Long-Haven Rudolph Dee-ET
EX-90,2E EVVEE GMD-DOM
2-11 365 32720 4.8 1565 3.8 1252
Lifetime 166900 4.3 7099 3.5 5884

9th Dam: Regancrest Elton Disrael-ET
VG-88 EX-MS DOM
2-04 365 33617 4.5 1499 3.5 1169
Full bro: Regancrest Elton Durham-ET

10th Dam: Snow-N Denises Dellia
EX-95,2E EEEEE GMD-DOM
6-00 365 35230 4.0 1425 3.0 1049
Lifetime 180240 3.9 7108 3.2 5723
**Dam of sires 'Durham' & 'Dundee'*

11th Dam: Snow-N Dorys Denise
EX-90,2E EX-MS GMD-DOM
5-09 365 33350 3.8 1256 3.1 1038
Lifetime 114010 3.6 4153 3.2 3649

Fun in the Sun ~ NY PICNIC STYLE



**Sheland McCutchen Beauty
EX-90 EEVVE**

4-03 365 36480 4.7 1707 3.5 1284
(2nd Dam of Lot 4)



**Sheland Reflector Bright-ET
GP-83, VG-MS**

2-02 344 25090 3.2 798 3.4 863
(Dam of Lot 4)

LOT 4

Sheland Solut Brilliant-ET

3205146355 99%RHA-I

Born 5/14/19

Preliminary genomics +2905GTPI
+1682M +.09% +88F +.09% +66P
+967NMS\$ +7.4PL +.6DPR 2.56SCS
+2.65T +2.80UDC +2.34FLC
+204FE +1.6FI 7.2%SCE
+1002CMS\$ +1269DWPS

A2A2

Sheland Farms LLC

12043 County Route 79

Adams, NY 13605

315-846-5982

Fustead S-S-I Solution-ET

3139490455 4/19 PTA +2870GTPI
+2024M +.12% +110F +.02% +68P
+1030NMS\$ +7.1PL -.3DPR 2.63SCS
+2.08T +1.94UDC +1.95FLC 76%R
Frazzled X VG-85 DOM Rubicon

Sheland Reflector Bright-ET

3-01 GP-83 G+G+V 3133601508
4/19 PTA +2532GTPI +1455M +41F
+63P +636NMS\$ +4.7PL +1.1DPR
+2.37T +2.06UDC +1.79FLC
2-02 344 23090 3.2 798 3.4 863
3-03 86 6940 3.2 223 2.9 204 RIP
Sire: S-S-I Mogul Reflector
(Pictured above)

**2nd Dam: (Pictured above)
Sheland McCutchen Beauty
EX-90 EEVVE**

2-00 365 28800 4.4 1257 3.4 984
3-03 302 29660 4.2 1258 3.3 990
4-03 365 36480 4.7 1707 3.5 1284
Lifetime 104420 4.5 4742 3.4 3655

3rd Dam:

**Spruce-Haven Rob BS13240-ET
GP-84 VV+++**
3-02 365 30670 4.5 1370 3.3 998
4-11 365 36260 4.2 1508 3.0 1071
Lifetime 156110 4.2 6489 3.1 4873

4th Dam:

**Potters-Field Dichard Bella
EX-91,2E EEEVE**
3-06 365 29640 3.2 948 3.1 932
Lifetime 100340 3.1 3086 3.1 2185

**5th Dam: Potters-Field WG Bella-ET
VG-88 VVEVV DOM**

2-00 365 33670 4.2 1409 3.2 1091

6th Dam: Miss Autumn Rud Biscuit-ET

VG-87 EVVVV GMD-DOM
1-10 365 41190 4.3 1754 3.5 1431
Lifetime 122900 4.1 5080 3.4 4200

7th Dam: O-C-E-C Bellwood Baby-ET

VG-85 +V+VV GMD-DOM
2-05 314 30720 4.3 1324 3.0 935

8th Dam: Spring-Born Cleitus Bess

VG-86 VVVV GMD-DOM
2-02 365 31260 4.9 1526 3.2 1012

9th Dam: Spring-Born Ned Bernadette

VG-87 VEVVV GMD-DOM
3-04 365 37160 4.5 1654 3.2 1177
Lifetime 112590 4.4 4989 3.4 3810

10th Dam:

**Star-Bright-Vu Chairman Betty
VG-88 VEVV**
3-08 365 29580 3.0 895 3.0 894
Lifetime 138280 3.4 4688 3.0 4110

11th Dam: James-Hill Elevation Betsy

EX-94,3E EEEE GMD-DOM
8-02 365 47070 4.4 2055 2.6 1209
Lifetime 195538 3.6 6965 2.7 2261

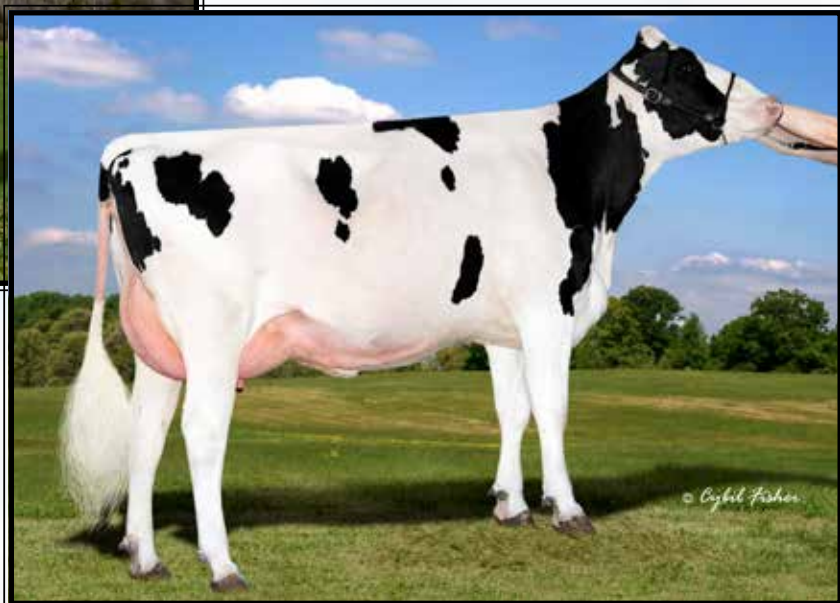
Han Hopman

Fun in the Sun ~ NY PICNIC STYLE



**Main-Drag Rubicon Email;
VG-88 VEU+E**

2-09 365 32390 3.9 1257 3.3 1068
(2nd Dam of Lot 5 and 3rd Dam of Lot 27)



**Main-Drag Fgship Embolic-ET
VG-85 U+++U
(Dam of Lot 5)**

LOT 5 #6096

Cookiecutter Embark

3149941640 99%RHA-I
Born 10/5/18 4/19 PTA +2899GTPI
+1655M +.04% +73F +.02% +56P
+939NMS +8.2PL +3.1DPR 2.75SCS
+2.93T +3.38UDC +1.92FLC
+171FE +3.8FI 5.5%SCE
+955CMS

#1 GTPI Delta daughter!

***Top 25 gTPI heifer in the breed
over 6 months old!**

***Ready to IVF**

Cookiecutter Holsteins

239 Vaughn Road
Hudson Falls, NY 12839
518-858-6156

Mr Mogul Delta 1427-ET

72128216 4/19 PTA +2774GTPI
+1613M +.10% +90F +.02% +55P
+938NMS +7.8PL +1.3DPR 2.90SCS
+2.22T +2.81UDC +1.61FLC 99%R
Mogul X VG-87 GMD-DOM Robust

Main-Drag Fgship Embolic-ET

2-04 VG-85 V+++V 3134740065
4/19 PTA +2662GTPI +1171M +55F
+38P +760NMS +7.2PL +3.4DPR
+2.31T +2.79UDC +1.54FLC
1-08 256 19770 3.9 778 3.1 609 RIP
Sire: S-S-I 1stclass Flagship-ET
(Pictured above)

2nd Dam: (Pictured above)

**Main-Drag Rubicon Email
VG-88 VEV+E**
1-09 365 30880 3.9 1192 3.4 1036
2-09 306 32390 3.9 1257 3.3 1068

3rd Dam:

**Winterhlm-WG Emotional
VG-87 EV+VV**
3-01 349 39950 3.4 1374 2.9 1178
4-02 338 38770 3.9 1516 3.0 1149
Lifetime 131430 3.6 4766 3.1 4055

4th Dam:

**Winterhlm-WG Bax Elated-ET
EX-92 EEEEE GMD**
6-07 365 51600 3.8 1973 3.0 1532
Lifetime 197720 3.6 7177 3.2 6234

5th Dam:

**Winterhlm-WG BG Elation-ET
EX-93,2E EEE+E**
5-01 365 41730 3.2 1348 3.4 1418
Lifetime 114160 3.4 3885 3.5 3963

6th Dam: Ridgedale Emotion-ET

EX-90 VEEVE
4-00 365 27600 3.5 967 3.4 932

7th Dam: Ridgedale Emera

EX-95,4E EEEEE
8-00 365 34200 4.0 1374 3.2 1098
Lifetime 178150 4.1 7309 3.4 6011

***2nd E. Fall Nat'l 125,000 lb cow 2008**

8th Dam: Ridgedale Emma-ET

VG-88 VEVVE
2-07 365 29680 3.6 1062 3.2 954

Maternal sistersto Emma:

Ridgedale Estelle-ET EX-95,3E
Lifetime 194340 3.7 7281 3.0 5828

9th Dam: Ridgedale Fond Example

EX-95,3E EEEEE GMD
7-04 365 46050 3.8 1741 2.8 1267

Lifetime 185450 3.7 6854 3.1 5829

***3rd E. Spr. Nat'l Produce of Dam 1996**

10th Dam: EX-90 EVEV

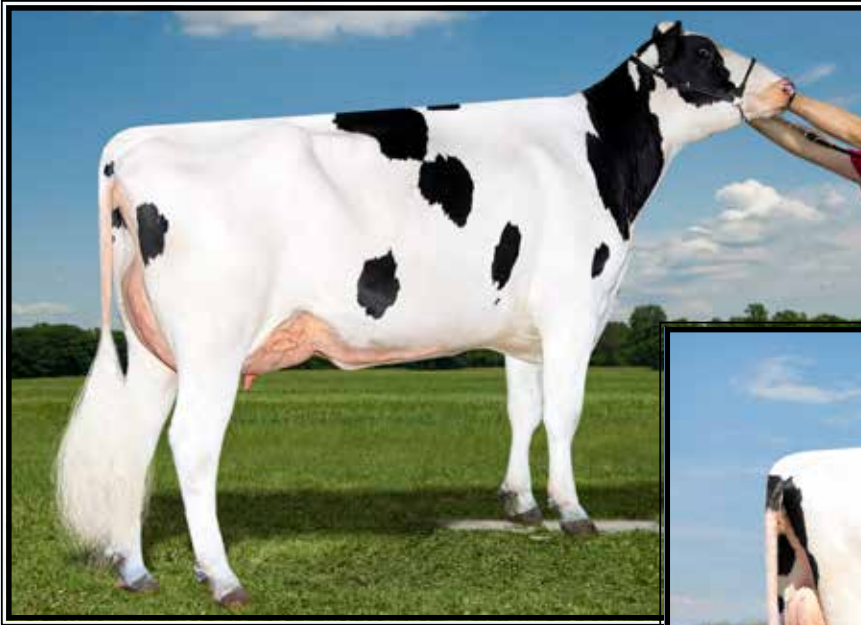
11th Dam: VG-87

12th Dam: EX-90,2E EEVE

13th Dam: VG-85

Han Hopman

Fun in the Sun ~ NY PICNIC STYLE



Welcome Bombero Kris-ET
EX-90 VVEEE
 3-03 281 28610 4.1 1165 3.1 880
 (2nd Dam of Lot 6)



Welcome Modesty Kelly-ET
GP-83 +UG+U
 (Dam of Lot 6)

LOT 6

Welcome Riveting 7160-ET

3201497206 99%RHA-I
 Born 2/25/19 4/19 PTA +2884GTPI
 +1743M +.10% +95F +.03% +62P
 +1028NMS +8.3PL +2.8DPR 2.80SCS
 +1.91T +2.18UDC +1.11FLC
 +215FE +3.5FI 5.9%SCE
 +1049CMS +1174DWPS
 +159RZG

***Top 5 NMS Riveting daughter!**

Welcome Stock Farm
 285 W River Rd
 Schuylerville, NY 12871
 518-424- 6770

S-S-I BG Frzzld Riveting-ET

3133120549 4/19 PTA +2896GTPI
 +1319M +.10% +77F +.05% +55P
 +987NMS +9.2PL +3.5DPR 2.46SCS
 +1.95T +2.58UDC +1.51FLC 75%R
 Frazzled X VG-87 Profit

Welcome Modesty Kelly-ET

2-04 GP-83 +VG+V 3138817886
 4/19 PTA +2636GTPI +1574M +74F
 +51P +7.3PL +1.3DPR 2.88SCS
 +1.89T +2.09UDC +1.42FLC
 2-00 256 19352 3.6 703 2.9 564 RIP
 Sire: Bacon-Hill Pety Modesty-ET
 (Pictured above)

2nd Dam: (Pictured above)
Welcome Bombero Kris-ET
EX-90 VVEEE

2-03 287 24950 4.0 998 3.0 749
 3-03 281 28610 4.1 1165 3.1 880
 4-02 79 9658 4.6 449 2.8 275 RIP

3rd Dam:
No-Fla McCutchen 35703-ET
EX-90 EVEEE DOM

4-02 365 39930 4.3 1704 3.2 1276
 Lifetime 107700 4.2 4562 3.3 3551

4th Dam:
No-Fla Massey 30194-TW
VG-85 VVGE+

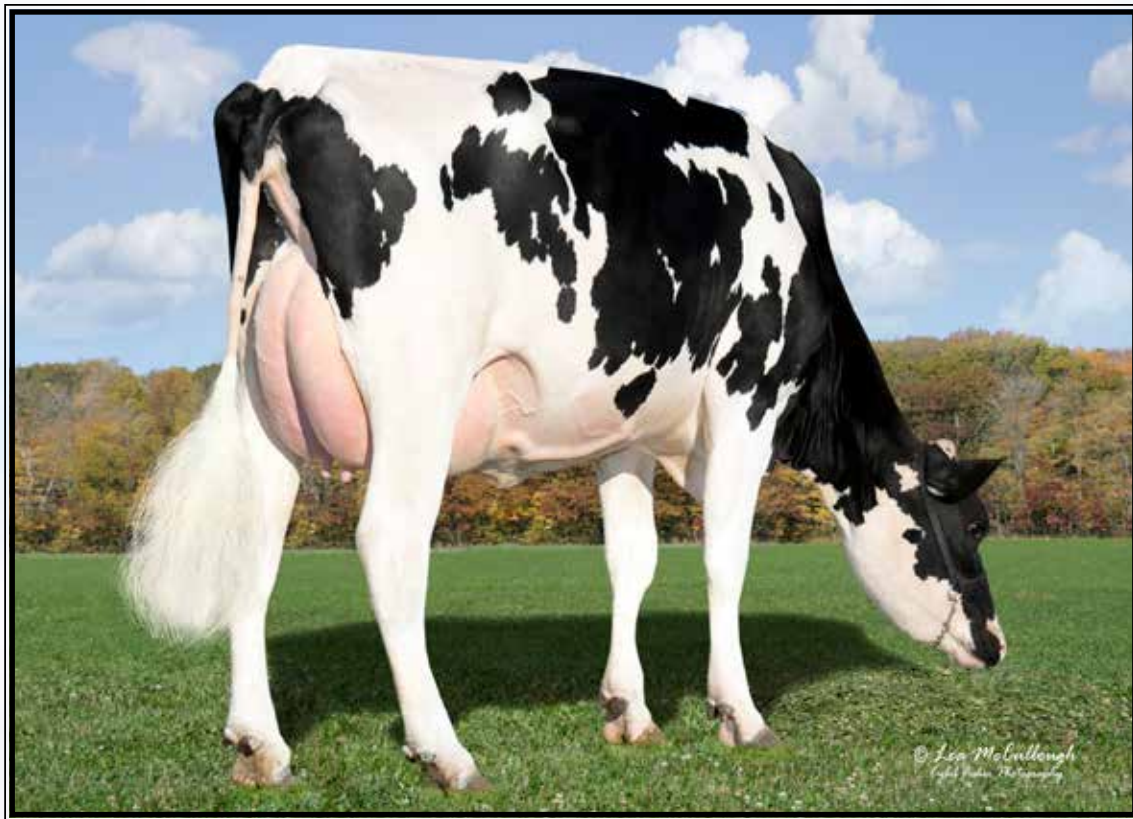
2-01 365 26990 3.7 1010 3.4 920
 3-06 305 30810 3.6 1114 3.4 1043

5th Dam:
No-Fla Oman Liana 21974
VG-85 V+++V

4-03 305 22300 4.7 1091 3.7 862

Han Hopman

Fun in the Sun ~ NY PICNIC STYLE



OCD Man-O-Man Fantom-ET EX-90 VVVEE DOM

1-10 305 24290 4.2 1013 3.3 805

(4th Dam of Lot 7)

LOT 7

Aardema Amazon 44199-ET

3151564603 99%RHA-I
Born 3/12/19 5/19 PTA +2876GTPI
+1735M +.17% +113F +.02% +60P
+1042NMS +7.7PL +1.8DPR 2.66SCS
+1.43T +2.14UDC +1.45FLC
+231FE +2.4FI 7.3%SCE
+1063CMS

A2A2

#1 GTPI and #2 NMS Amazon Dtr.

Twin-Ridge Genetics

305 S County Line Rd
Jerome, ID 83338
Ashley 815-370-8713

Seagull-Bay Amazon-ET

3137661386 4/19 PTA +2788GTPI
+1711M +.15% +107F +.06% +68P
+961NMS +5.8PL +.5DPR 2.80SCS
+1.68T +2.15UDC +1.50FLC 76%R
Achiever X VG-86 Stoic

Aardema Frazzled 31422-ET

3139798819 4/19 PTA +2698GTPI
+1925M +106F +58P +869NMS +5.4PL
+2.03T +2.08UDC +1.07FLC
-Fresh 6/15/19. Age at calving 1-10
Sire: Melarry Josuper Frazzled-ET

2nd Dam:

Endco Denv Florrie 24673-ET
GP-81 ++VF+

3rd Dam:

OCD Tango Florrie-ET
GP-83 +V+++

2-01 365 33960 3.8 1281 3.0 1017

4th Dam: (Pictured above)

OCD Man-O-Man Fantom-ET
EX-90 VVVEE DOM

1-10 305 24290 4.2 1013 3.3 805

5th Dam:

Lars-Acres Felic Forgive-ET
EX-90 EEVVE DOM

4-00 365 31800 4.1 1301 3.3 1035

6th Dam:

Markwell Durham Felice
EX-92 EEEEE GMD-DOM

3-10 365 33960 3.9 1330 3.3 1115

7th Dam:

Markwell Outside Finesse-ET
EX-90 EEVEV DOM

3-05 365 37870 4.0 1502 3.2 1226
Lifetime 112630 4.1 4662 3.4 3782

8th Dam:

Ms Markwell Rudlp Rarity-ET
VG-88 EEE+V

2-03 365 26080 3.9 1016 3.2 841

9th Dam: Markwell Thor Renee-ET

10th Dam:

Markwell Bstar E Raven-ET
EX-95,3E EEEEE GMD-DOM

4-09 365 36610 4.3 1580 3.2 1185
Lifetime 160020 4.1 6623 3.4 5458

Queen of the Breed finalist

11th Dam:

Markwell Mark Elite
EX-92,4E EEVEE GMD-DOM

7-00 365 36230 3.9 1426 3.0 1096
Lifetime 211430 3.8 8108 3.4 7131

12th Dam: Rockalli Mars Emily
EX-94,4E EEEEE GMD-DOM

3-10 365 28370 3.7 1050 3.3 934
Lifetime 182970 3.8 7016 3.3 5983

Han Hopman

Fun in the Sun ~ NY PICNIC STYLE



Co-Op Uno Classy 6895-ET VG-85 +U++U

4-02 365 29660 4.3 1278 3.5 1029

(3rd Dam of Lot 8)

LOT 8

Aardema Kanzo Mykena-ET

3139799372 99%RHA-I
 Born 10/15/18 4/19 PTA +2865GTPI
 +1515M +.09% +82F +.07% +67P
 +926NMS +7.1PL +1.2DPR 2.71SCS
 +2.88T +3.02UDC +2.12FLC
 +195FE +1.5FI 6.8%SCE
 +967CMS

*Top 5 gTPI and #1 PTAT Kanzo dtr

*Ready to IVF

Twin-Ridge Genetics

305 S County Line Rd
 Jerome, ID 83338
 Ashley 815-370-8713

Bomaz Damien Kanzo-ET

3137878467 4/19 PTA +2740GTPI
 +1347M +.12% +85F +.02% +47P
 +900NMS +7.3PL +2.7DPR 2.64UDC
 +1.51T +2.64UDC +1.04FLC 77%R
 Damien X GP-82 Josuper

Co-Op Piledriver 23836-ET

2-05 VG-85 VV++V 3133064029
 4/19 PTA +2773GTPI +1910M +97F
 +73P +959NMS +6.2PL +.2DPR
 +1.90T +2.22UDC +1.36FLC
 1-10 240 23960 3.3 801 3.2 767 RIP
 proj. 305ME 39980M 1273F 1274P
 -Due 9/19/19 w/ 2nd calf
 Sire: Co-Op Troy Piledriver-ET

2nd Dam:

Co-Op Stoic 40494-ET
GP-83 ++FGV
 2-00 365 26520 4.7 1247 3.8 1005

3rd Dam: (Pictured above)

Co-Op Uno Classy 6895-ET
VG-85 +V++V
 4-02 365 29660 4.3 1278 3.5 1029

4th Dam:

Co-Op Planet Classy-ET
EX-90 EEVVE
 5-00 365 36570 4.1 1496 3.4 1229

5th Dam:

Bomaz Ramos 5877 CRI-ET
VG-85 V++VV DOM
 2-02 365 24580 3.7 914 3.3 820

6th Dam:

Bomaz Garter 2796-ET
VG-88 VEVVV GMD-DOM
 2-03 365 38170 3.5 1349 3.3 1254

7th Dam:

Dalse Bomaz 1617
EX-91,2E VE+EE GMD-DOM
 3-00 365 43709 5.0 2180 3.0 1310

8th Dam:

Dalse Bomaz -1551
EX-90,2E EVEVE GMD-DOM
 4-01 365 42790 5.3 1164 3.4 1440
 Lifetime 114590 4.9 5669 3.4 3903

9th Dam:

Dalse Highlight Kathy
EX-94,3E EEEEE GMD
 7-04 365 43640 3.9 1707 3.0 1304
 8-08 365 47230 3.9 1840 3.0 1409
 Lifetime 373090 3.8 14360 3.1 11518

Han Hopman

Fun in the Sun ~ NY PICNIC STYLE



Ms TCF Cherry-Acres Lori-ET VG-87 UUUUU DOM

1-11 292 27680 4.3 1201 3.4 947

(2nd Dam of Lot 9)

LOT 9

Cherrypencol L Lana-ET

3201118962 99%RHA-I
 Born 4/24/19 6/19 PTA +2857GTPI
 +1901M +.04% +83F +.04% +69P
 +1030NMS +8.9PL +2.0DPR 2.57SCS
 +1.45T +2.18UDC +.93FLC
 +226FE +2.6FI 6.6%SCE
 +1059CMS

**Early opportunity to get ahead w/ Legacy*

Pen-Col Farms & Hembury Farms LLC

PO Box 528
 Millville, PA 17846
 570-380-3456 Denny
 570-220-7413 Ron

Pine-Tree CW Legacy-ET

3142332722 4/19 PTA +2914GTPI
 +1425M +.19% +107F +.07% +63P
 +1084NMS +8.6PL +2.2DPR 2.46SCS
 +1.21T +1.90UDC +.73FLC 75%R
 Frazzled X GP-83 Yoder

Cherry-Acres Jedi Lauri-ET

VG 85, VG MS @ fresh just 35 days
 3130708889 4/19 PTA +2748GTPI
 +1608M +65F +67P +863NMS +6.9PL
 +3.0DPR +1.85T +2.10UDC +.81FLC
 -Fresh in April and looks great!
 Sire: S-S-I Montross Jedi-ET

2nd Dam: (Pictured above)
Ms TCF Cherry-Acres Lori-ET
VG-87 VVVVV DOM
 1-11 292 27680 4.3 1201 3.4 947
 2-11 305 27570 4.3 1195 3.2 887

3rd Dam:
Tiger-Lily Uno Leah-ET
VG-87 +V+VV
 3-02 341 31990 4.5 1425 3.4 1072

4th Dam:
Tiger-Lily Planet Limbo
VG-85 +VG+V DOM
 4-02 365 35750 3.7 1338 3.3 1193

5th Dam: Tiger-Lily Bret Lonnie
GP-82, VG-MS
 3-03 338 29440 4.2 1246 3.3 979

6th Dam:
Tiger-Lily Magna Lucy-ET GP-82
 2-02 365 30070 3.7 1123 3.3 995

7th Dam: B-Y-U Addison Leora-ET
VG-86 VE+GV GMD-DOM
 3-11 365 37550 3.9 1458 3.4 1291
 Lifetime 130140 3.7 4781 34 4403

8th Dam: Glen-Toctin Win Loretta-ET
VG-85 +E+GV GMD-DOM
 2-01 305 29380 3.4 1002 3.2 946

9th Dam: Unicorn Celcius Lei-ET
VG-86 VVEVV GMD-DOM
 2-00 365 27840 4.5 1240 3.6 1001

10th Dam: Unicorn Blackstar Lilly
VG-87 EEV+V GMD-DOM
 2-00 305 24910 4.0 1001 3.3 819

11th Dam: Catocin Melwood Loni-ET
VG-87 EEGV GMD-DOM
 2-00 365 26760 4.3 1162 3.5 945

12th Dam: Unicorn Lucky Lynn-ET
VG-85 +VE+ GMD-DOM
 5-06 365 37580 3.5 1320 3.2 1190

13th Dam: Unicorn Chairman Lynn
EX-90 EEV GMD-DOM
 7-02 365 36990 3.8 1416 3.2 1187
 Lifetime 135090 4.2 5664 3.4 4558

Han Hopman

Fun in the Sun ~ NY PICNIC STYLE



Cookiecutter Dta Habitan-ET VG-89 VVVVE @ 2-10
(Dam of Lot 10)

LOT 10

AOT Challenger Holly-ET

3205234892 99%RHA-NA
Born 3/14/19 5/19 PTA +2855GTPI
+1264M +.19% +100F +.04% +49P
+939NMS +7.6PL +1.1DPR 2.65SCS
+2.96T +3.62UDC +1.12FLC
+196FE +1.7FI 7.6%SCE
+964CMS

***The highest GTPI Habitan dtr to be offered publicly to date!**

Guardian Genetic/Fairvue Farms LLC

199 Route 171
Woodstock, CT 06281
814-937-8594

Sandy-Valley Challenger-ET

3140616169 4/19 PTA +2826GTPI
+1259M +.20% +103F +.04% +51P
+969NMS +7.6PL +2.3DPR 2.69SCS
+2.24T +3.04UDC +.46FLC 76%R
Superhero X EX-90 Silver

Cookiecutter Dta Habitan-ET

2-10 VG-89 VVVVE 3134739087
4/19 PTA +2836GTPI +1382M +91F
+51P +906NMS +7.0PL +1.3DPR
+3.29T +3.44UDC +1.75FLC
2-04 214 18690 4.5 832 3.0 556 RIP
Last test- 111 lbs 4.9%F 3.4%P
proj. ME 39190M
Sire: Mr Mogul Delta 1427-ET
(Pictured above)

10th generation EX mammary!

***Dam of 200H11698 Highjump +2945G**

***Prolific embryo donor**

2nd Dam:

Cookiecutter Day Haley-ET
VG-88 VEVVE
2-00 365 35140 3.9 1379 3.4 1192
3-03 365 31900 4.4 1401 3.4 1091

3rd Dam:

Cookiecutter Mom Halo-ET
2-09 VG-88 VV+VE DOM
2-00 365 35280 5.2 1819 3.7 1304

4th Dam:

Cookiecutter Gld Holler-ET
VG-88 VVV+E DOM
2-03 365 40730 3.5 1410 3.1 1249
***Nom. Int'l Cow of the Year 2016**

5th Dam:

Ms Kings-Rnsm Champ Haley-ET
EX-90 EEVVE GMD-DOM
3-11 365 43690 3.7 1625 3.1 1357

6th Dam:

Regancrest-JDV Hanna-ET
EX-90 EEVVE
4-07 365 45110 4.3 1922 3.2 1449

7th Dam:

Long-Haven Rudolph Dee-ET
EX-90,2E EVVVE GMD-DOM
2-11 365 32720 4.8 1565 3.8 1252
Lifetime 166900 4.3 7099 3.5 5884

8th Dam:

Regancrest Elton Disrael-ET
VG-88 EX-MS DOM
2-04 365 33617 4.5 1499 3.5 1169

Full brother: 7HO5157 Durham

9th Dam:

Snow-N Denises Dellia
EX-95,2E EEEEE GMD-DOM
6-00 365 35230 4.0 1425 3.0 1049
Lifetime 180240 3.9 7108 3.2 5723
***Dam of sires 'Durham' & 'Dundee'**

10th Dam:

Snow-N Dorys Denise
EX-90,2E EX-MS GMD-DOM
5-09 365 33350 3.8 1256 3.1 1038
Lifetime 114010 3.6 4153 3.2 3649

Han Hopman

Fun in the Sun ~ NY PICNIC STYLE



Aurora Solution 20995-ET
(Dam choice of Lot 11)



Aurora Solution 20991-ET
(Dam choice of Lot 11)



Aurora Monterey 15925-ET VG-85 VVG+U

3-00 293 34080 3.9 1334 3.4 1168
(3rd Dam of Lot 11)

LOT 11
IVF Session choice

**Buyer purchasing rights to control the next IVF session(s) from one of the 2 heifers below. Buyer is guaranteed IVF sessions until a minimum of 8 #1 or #2 IVF embryos are produced. Buyer keeps all resulting embryos from these controlled IVF sessions.*

Buyer is responsible for all costs of the aspiration and mating sire decisions.

Dams of IVF Session choice:

Aurora Solution 20995-ET

3201489154 99%RHA-I
Born 12/15/18 4/19 PTA +2901GTPI
+1367M +.17% +98F +.06% +60P
+992NMS\$ +7.5PL +1.7DPR 2.61SCS
+2.39T +2.55UDC +1.83FLC
+217FE +2.3FI 7.4%SCE +1031CMS\$

or

Aurora Solution 20991-ET

3201489150 99%RHA-NA
Born 12/14/18 4/19 PTA +2895GTPI
+1237M +.23% +110F +.06% +56P
+1052NMS\$ +8.1PL +1.8DPR 2.62SCS
+1.74T +2.30UDC +1.68FLC
+230FE +2.3FI 6.3%SCE +1091CMS\$

Aurora Ridge Dairy LLC

2498 Angling Rd
Aurora, NY 13026
315-364-7069

Fustead S-S-I Solution-ET

3139490455 4/19 PTA +2870GTPI
+2024M +.12% +110F +.02% +68P
+1030NMS\$ +7.1PL -.3DPR 2.63SCS
+2.08T +1.94UDC +1.95FLC 76%R
Frazzled X VG-85 DOM Rubicon

Aurora Flagship 18508-ET

3142041219 4/19 PTA +2720GTPI
+623M +72F +50P +842NMS\$ +7.7PL
+2.6DPR +1.93T +2.37UDC +1.14FLC
-Fresh 3/13/19 & scores this fall
-Last test- 96 lbs 4.3%F 3.3%P
Sire: S-S-I 1stclass Flagship-ET

3rd Dam: (Pictured above)

Aurora Monterey 15925-ET VG-85 VVG+V

2-00 303 26870 4.9 1310 3.7 983
3-00 293 34080 3.9 1334 3.4 1168

3rd Dam:

Aurora Dean 13810 GP-83 ++G+V

2-02 365 35860 3.6 1285 3.3 1182
3-05 365 39530 3.4 1345 3.3 1290

4th Dam:

Aurora Beacon 11964 VG-85 VVG+V

2-09 345 35490 3.4 1224 3.2 1142

5th Dam:

Aurora Roy 6339 VG-88 EVVVV

4-10 319 32280 3.5 1129 3.1 1010
Lifetime 156510 3.5 5496 3.2 4990

6th Dam:

Aurora Die-Hard 4683 VG-85 +E++V

7-02 365 41380 2.6 1083 2.8 1170
Lifetime 254530 3.2 8202 2.9 7383

Fun in the Sun ~ NY PICNIC STYLE



Clear-Echo Pure 3342-ET EX-90 EEGUE

1-11 365 32850 4.3 1405 3.3 1089
(3rd Dam of Lot 12)

**LOT 12
IVF Session**

**Buyer purchasing rights to control the next IVF session(s). Buyer is guaranteed IVF sessions until a minimum of 8 #1 or #2 IVF embryos are produced. Buyer keeps all resulting embryos from these controlled IVF sessions.*

Buyer is responsible for all costs of the aspiration and mating sire decisions.

Dam of IVF Session:

Clear-Echo Solution 4571-ET

3200274911 99%RHA-I
Born 10/21/18 4/19 PTA +2875GTPI
+2152M +.09% +105F +.10% +94P
+1009NMS\$ +5.3PL +.3DPR 2.91SCS
+1.95T +1.77UDC +1.06FLC
+276FE +.5FI 6.9%SCE +1058CMS\$
+163RZG

**One of the highest protein & feed efficiency heifers in the world!*

Clear-Echo Farm LLC c/o Kevin Peck
800 Route 32N
Schuylerville, NY 12871
518-669-4468

Fustead S-S-I Solution-ET

3139490455 4/19 PTA +2870GTPI
+2024M +.12% +110F +.02% +68P
+1030NMS\$ +7.1PL -.3DPR 2.63SCS
+2.08T +1.94UDC +1.95FLC 76%R
Frazzled X VG-85 DOM Rubicon

Clear-Echo Jedi 3867-ET

2-11 VG-85 VV+VV 3129746272
4/19 PTA +2667GTPI +2228M +70F
+89P +783NMS\$ +4.3PL +1.4DPR
+1.71T +1.63UDC +.44FLC
Sire: S-S-I Montross Jedi-ET

**3rd Dam: (Pictured above)
Clear-Echo Pure 3342-ET
EX-90 EEGUE**

1-11 365 32850 4.3 1405 3.3 1089
3-01 331 30530 4.1 1263 3.4 1042

**4th Dam:
Clear-Echo Lexor 2787-ET
VG-86 VV+VV**

2-00 365 33900 3.9 1311 3.4 1165

**5th Dam:
Clear-Echo Observer 2280-ET
GP-84 VV+++**

2-01 365 27890 3.6 1015 3.3 917

**6th Dam:
Clear-Echo 822 Ramo 1200-ET
EX-94,2E EEEEE DOM**

4-04 365 39570 4.5 1782 3.2 1252
7-00 305 36120 3.8 1359 3.5 1282
Lifetime 135020 4.1 5602 3.4 4616

**15+ sons to AI!*

**Full sister is the dam of 'Bookem'*

**7th Dam:
Clear-Echo Hersh D-Rac 822
VG-87 VVVVV DOM**

2-01 365 36240 2.9 1062 3.0 1091
4-05 365 40830 3.1 1273 2.8 1158
Lifetime 152450 3.1 4692 3.0 4630

**8th Dam:
Clear-Echo Decisn L-Rac 505
VG-86 VEV+V GMD-DOM**

5-01 365 39390 3.9 1528 3.1 1232
6-03 365 33770 4.1 1400 3.3 1101
Lifetime 150760 4.2 6372 3.4 5108

**9th Dam:
Clear-Echo Lily Rac 264-ET
GP-84 DOM**

2-11 365 32980 4.3 1410 34 1137
Lifetime 110650 4.5 5013 3.3 1127

Fun in the Sun ~ NY PICNIC STYLE

LOT 13 IVF Session

**Buyer purchasing rights to control the next IVF session(s). Buyer is guaranteed IVF sessions until a minimum of 8 #1 or #2 IVF embryos are produced. Buyer keeps all resulting embryos from these controlled IVF sessions.*

Buyer is responsible for all costs of the aspiration and mating sire decisions.

Dam of IVF Session:

Kellogg-Bay Juicy Sugar

3151772566 99%RHA-I
Born 5/11/18 4/19 PTA +2879GTPI
+1558M +.14% +99F +.08% +70P
+1008NMS\$ +6.9PL +3.3DPR 2.80SCS
+1.50T +2.36UDC +.64FLC
+242FE +3.4FI 5.7%SCE +1050CMS
A2A2
#2 GTPI and NMS\$ Juicy daughter

Fly-Higher Holsteins LLC c/o Tom Kugler

28 Coons Rd
Valley Falls, NY 12185
518-366-3901

Co-Op Aardema Juicy-ET

3133065163 4/19 PTA +2701GTPI
+1369M +.08% +75F +.08% +63P
+881NMS\$ +6.1PL +1.8DPR 2.62SCS
+1.31T +2.18UDC +.64FLC 77%R
Magnus X Tango

Kellogg-Bay Delta Sugar

3-06 GP-83 G+G++ 74596947
4/19 PTA +2743GTPI +1222M +100F
+57P +924NMS\$ +6.7PL +9DPR
+1.91T +2.46UDC +.83FLC
1-08 321 28930 4.2 1201 3.5 1024
2-08 322 26780 4.3 1163 3.8 1024
Due 6/20/19 w/ 3rd calf
Sire: Mr Mogul Delta 1427-ET

3rd Dam:

Kellogg-Bay Supersire Sexy VG-88 EEVVV

1-10 297 27720 4.4 1228 3.3 921
2-09 365 29710 5.0 1486 3.8 1139
3-11 302 34200 4.7 1619 3.3 1123

4th Dam:

Kellogg-Bay Alexander Sexy EX-90

3-00 3 311 28800 5.0 1448 3.5 1018
1-09 3 365 27250 5.0 1361 3.5 952

5th Dam:

Lake-Home Lord Lily Sexy VG-85

5-04 297 27610 3.5 978 3.4 932
Lifetime 140550 3.9 5415 3.4 4798

6th Dam:

Lake-Home Formation Sissy EX-90 EX-MS

4-06 305 24960 3.6 901 3.0 761
Lifetime 101140 3.6 3562 3.1 3175

LOT 14

Aardema Nugent 44074-ET

3151564478 99%RHA-I
Born 12/26/18 5/19 PTA +2841GTPI
+1318M +.19% +102F +.06% +58P
+1000NMS\$ +7.5PL +2.3DPR 2.72SCS
+1.62T +2.15UDC +1.26FLC
+222FE +2.9FI 6.4%SCE
+1036CMS
A2/A2

Top 5 GTPI, NMS\$ & CMS\$ Nugent dtr.

Same family as:

7HO14250 Pine-Tree CW Legacy-ET
4/19 PTA +2914GTPI +1084NMS\$

Twin-Ridge Genetics

305 S County Line Rd
Jerome, ID 83338
Ashley 815-370-8713

S-S-I Outsiders Nugent-ET

3138037833 4/19 PTA +2790GTPI
+1726M +.12% +100F +.04% +65P
+945NMS\$ +6.1PL +9DPR 2.87SCS
+1.99T +1.89UDC +1.70FLC 75%R
Outsiders X GP-80 Damaris

Aardema Frazzled 31142-ET

3139798539 4/19 PTA +2704GTPI
+1567M +87F +64P +872NMS\$ +6.3PL
+9DPR +1.68T +1.88UDC +.73FLC
-Due 6/20/19

Sire: Melarry Josuper Frazzled-ET

2nd Dam:

Endco Yoder L7933 9847-ET VG-86 VV+VV

3rd Dam:

T-Spruce Lgold 7933-ET GP-81

2-05 248 20320 4.4 904 3.6 725

4th Dam:

Bosside Epic Yinga VG-85 VV++V

2-01 365 34150 3.7 1271 3.5 1183

5th Dam:

Bosside Boulder Bailly-ET GP-83 V+GGV

2-03 365 28240 3.2 909 3.3 921
3-11 365 33560 3.7 1246 3.4 1134

6th Dam:

Co-Op Bosside Yelonda-ET GP-84 VEF++ DOM

2-00 365 28390 4.9 1386 3.4 955
5-03 365 27160 4.1 1328 3.2 1013
***FULL sister to 1HO9527 Massey**

7th Dam:

Coyne-Farms Yelena CRI-ET VG-85 +VV+V GMD-DOM

1-11 365 36930 3.6 1336 3.2 1199

8th Dam:

Milkworth Manfred Yadda VG-86 GMD-DOM

1-11 365 35730 4.0 1435 3.2 1159
3-05 365 31210 4.3 1334 3.7 1169

Han Hopman

Fun in the Sun ~ NY PICNIC STYLE



Triplecrown-MH B Diamond-ET
(Dam of Lot 15)

LOT 15

Winstar Honda 5638-ET

3203025174 99%RHA-I
Born 1/11/19 4/19 PTA +2847GTPI
+989M +.23% +102F +.11% +61P
+990NMS +6.4PL +2.4DPR 2.68SCS
+1.83T +2.32UDC +.64FLC
+241FE +2.6FI 6.3%SCE
+1048CMS

**#1 NMS and CMS Honda available
for public purchase!**

***Ready to IVF**

Winstar Genetics LLC

1470 N 750 E
Shelley, ID 83274
208-221-0904

N-Springhope Honda-ET

3140503758 4/19 PTA +2770GTPI
+1557M +.06% +74F +.04% +60P
+855NMS +5.8PL +1.9DPR 2.66SCS
+2.25T +2.72UDC +1.77FLC 78%R
Lylas X VG-87 Montross

Triplecrown-MH B Diamond-ET

3133064116 4/19 PTA +2677GTPI
+1212M +.21% +104F +.05% +51P
+868NMS +5.0PL +1.4DPR 2.86SCS
+1.81T +1.73UDC +1.13FLC
2-00 120 10650 3.9 413 3.0 316 RIP
Sire: Pine-Tree Burley-ET

2nd Dam:

**Harvue Tango Evies Diamond
GP-83 +VG+V**
1-10 365 27770 4.7 1293 3.5 977

3rd Dam:

**Harvue Iota Evies Jewel-ET
VG-85 VVG+V**
2-04 365 36940 4.2 1564 3.3 1234

4th Dam:

**Harvue Planet Evie-ET
VG-87 VEV+V DOM**
2-02 305 24170 4.2 1022 3.2 775

5th Dam:

**Harvue Shottle Esther-ET
EX-90,2E EEVVE**
4-05 365 31440 3.4 1084 3.1 977
Lifetime 107950 3.7 3962 3.1 3369

6th Dam:

**Harvue B Marshal Emerald-TW
VG-85 +VVVV GMD**
3-11 365 36790 3.7 1354 3.1 1183
5-08 365 36740 3.5 1298 3.2 1165
Lifetime 143490 3.8 5488 3.4 4927

7th Dam:

**Harvue Prescott Ellie
EX-91,2E EEEVE GMD**
4-10 365 38120 4.3 1623 3.3 1260
Lifetime 176860 4.4 7832 3.4 5987

8th Dam:

**Harvue Encore Emerald
VG-86 ++V+V**
2-02 307 23390 4.0 943 3.3 778

Han Hopman

Fun in the Sun ~ NY PICNIC STYLE



Gillette Jedi Cleavage VG-85-CAN, VG-MS

1-09 362 26151 4.9 1281 3.9 1030

(2nd Dam of Lot 16)

LOT 16

Westcoast Postve Clmagic 8528

13319310C 99%RHA-I HH5
Born 3/24/19 5/19 PTA +2848GTPI
+1772M +.20% +125F +.09% +80P
+978NM\$ +5.1PL +.6DPR 2.74SCS
+2.12T +1.52UDC +.17FLC
+266FE +.8FI 8.7%SCE
+1027CMS\$

A2A2

***One of the highest CFP heifers in the World**

“FREE trucking to Fradon Farms, Ontario to the new buyer”

Westcoast Holsteins

c/o Darren Kooyman

47749 Prairie Central Rd

Chilliwack, BC V2P 6H3 CANADA

Darren 604-799-6376

Progenesis Positive

12609140C 4/19 PTA +2848GTPI
+1740M +.22% +128F +.07% +73P
+992NM\$ +4.5PL -.1DPR 2.92SCS
+2.27T +2.11UDC +.63FLC 78%R
Duke X Rubicon

Gillette Robson Cleamagic

12934373C 4/19 PTA +2792GTPI
+738M +102F +59P +964NM\$ +7.5PL
+3.3DPR 2.68SCS +1.35T +1.13UDC
-Due January 2, 2020

Sire: Bomaz AltaRobson-ET

2nd Dam: (Pictured above)

**Gillette Jedi Cleavage
VG-85-CAN, VG-MS**
1-09 362 26151 4.9 1281 3.9 1030

3rd Dam:

**Gillette Bombero Clever
VG-85-CAN VG-MS**
2-02 307 24769 4.7 1171 3.7 904

4th Dam:

**Clear-Echo Mcutchen 2820-ET
VG-85-CAN**
2-05 365 33446 4.7 1583 37 1235
4-00 365 38565 5.0 1933 3.8 1457

5th Dam:

**Clear-Echo M-O-M 2213-ET
VG-86 VVVVV DOM**
3-08 365 42880 4.0 1275 3.4 1475
5-02 365 39090 4.0 1564 3.5 1356
Lifetime 134800 4.1 5493 3.5 4726

6th Dam:

**Clear-Echo 822 Laud 1266-ET
EX-91 VEEVE DOM**
4-02 365 44440 3.1 1399 2.8 1264
Lifetime 162020 3.3 5291 3.0 4795

7th Dam:

**Clear-Echo Hershl D-Rac 822
VG-87 VVVVV DOM**
4-05 365 40830 3.1 1273 2.8 1158
Lifetime 152450 3.1 4692 3.0 4630

8th Dam:

**Clear-Echo Decisn L-Rac 505
VG-86 VEV+V GMD-DOM**
5-01 365 39390 3.9 1528 3.1 1232
Lifetime 150760 4.2 6372 3.4 5108

9th Dam:

**Clear-Echo Lily Rac 264-ET
GP-84 DOM**
2-11 365 32980 4.3 1410 3.4 1137
Lifetime 110650 4.5 5013 3.3 1127

Han Hopman

Fun in the Sun ~ NY PICNIC STYLE

OCD Modesty Rae 38657-ET VG-85 +U++U
(Dam of Lot 17)

**LOT 17****Miss Kenob Rae 52202-ET**

3204456782 99%RHA-NA
Born 2/7/19 4/19 PTA +2844GTPI
+1483M +.13% +92F +.08% +69P
+982NMS +7.5PL +2.4DPR 2.79SCS
+1.70T +2.25UDC +.53FLC
+229FE +2.9FI 6.1%SCE
+1026CMS

+158 RZG

Oakfield Corners Dairy

3650 Batavia-Elba Townline Rd
Oakfield, NY 14125
585-704-2501

De-Su 14222 Kenobi-ET

3141559616 4/19 PTA +2813GTPI
+1747M +.07% +84F +.08% +77P
+924NMS +6.6PL +1.9DPR 2.77SCS
+1.87T +2.34UDC +.19FLC 78%R
Jedi X VG-85 Spring

OCD Modesty Rae 38657-ET

2-09 VG-85 +V++V 3137916773
4/19 PTA +2645GTPI +584M +89F
+39P +823NMS +5.8PL +2.3DPR
+1.86T +2.08UDC +1.24FLC
2-03 166 14600 660 4.5 450 3.1 RIP
Sire: Bacon-Hill Pety Modesty-ET
(Pictured above)

Her outstanding flush history:

16 single IVF cycles w/ 243 trans embryos!
(avg 15.2 transferrable embryos per cycle)

7 pooled IVF cycles w/ 178 oocytes!
(avg. 25.4 oocytes per cycle)

2nd Dam:

OCD Kingboy Rae 3172-ET
VG-87 VVE+V
1-11 294 19080 4.8 924 3.6 691
2-10 283 23730 4.6 1081 3.4 802
*Full sister to 250HO12746 Rambo

3rd Dam:

EDG Ruby Uno Rae 2054-ET
EX-91 EEVEE DOM
3-04 308 29500 4.9 1437 3.5 1011

4th Dam:

Sandy-Valley Robust Ruby-ET
EX-90 VEVEV
6-00 336 37140 3.4 1248 3/4 1251
*Dam of #1 proven sire 'Rubicon'

5th Dam: Sandy-Valley Plane Sapphire
VG-87 VV+VV GMD
2-00 365 39130 3.3 1301 3.0 1175
*Dam of Sterling & Saloon

6th Dam: Sandy-Valley Bolt Sheila-ET
EX-92,2E EEVEE
2-02 365 44790 3.6 1607 2.9 1294
Lifetime 136150 3.6 4922 3.1 2798

7th Dam: Sandy-Valley Forbid Sully
VG-87, VG-MS GMD
2-03 365 35110 3.7 1310 3.1 1095

8th Dam: Orthoapple Marshall Alia-ET
VG-89, VG-MS GMD-DOM
2-04 365 36210 4.4 1605 3.2 1154

9th Dam: Regancrest-JB Tatum-ET
VG-87, VG-MS DOM
2-04 365 32682 3.6 1163 3.2 1059

10th Dam: Regancrest Tesk Della
EX-90 VEVEE GMD-DOM
5-11 365 35510 3.5 1234 3.2 1134
*Nom. Global Cow of the Year 2006

11th Dam: Snow-N Denises Dellia
EX-95,2E GMD-DOM
7-06 365 35610 4.0 1431 2.9 1035
*Dam of Durham & Dundee

12th Dam: Snow-N Dorys Denise
EX-90,2E EX-MS GMD-DOM
5-09 365 33350 3.8 1256 3.1 1038

Han Hopman

Fun in the Sun ~ NY PICNIC STYLE



No-Fla Spersire 36193-TW-ET GP-83, VG-MS

4-00 305 32240 4.1 1322 3.3 1059

(3rd Dam of Lot 18)

LOT 18

Jook Noble 19810-ET

3151767828 99%RHA-I

Born 3/12/19 5/19 PTA +2844GTPI

+2252M +.02% +91F -.01% +65P

+970NMS +7.6PL +3.0DPR 2.78SCS

+1.87T +2.36UDC +1.08FLC

+198FE +3.2FI 7.6%SCE

+971CMS

Lester Jones & Sons, Inc.

12667 Massey Rd

Massey, MD 21650

410-928-3951

Mr Spring Noble-ET

3132349851 4/19 PTA +2814GTPI

+1613M +.06% +76F +.02% +55P

+915NMS +7.7PL +2.5DPR 2.57SCS

+2.26T +2.94UDC +.69FLC 79%R

AltaSpring X VG-87 Uno

No-Fla Ragen Julie 47267-ET

3143627448 4/19 PTA +2713GTPI

+2353M +86F +71P +858NMS +5.7PL

+1.3DPR +1.68T +1.83UDC +1.45FLC

Due 1/21/20

Sire: Fairmont Stoic Ragen-ET

*Prolific embryo producer!

2nd Dam:

No-Fla Montross 42390-ET

GP-81 +GFG+

1-08 305 32890 3.4 1129 3.2 1047

3rd Dam: (Pictured above)

No-Fla Spersire 36193-TW-ET

GP-83 V++GV

1-11 312 29844 3.3 992 3.1 923

2-10 305 27730 3.7 1039 3.4 945

4-00 305 32240 4.1 1322 3.3 1059

Full sisters:

No-Fla Supersire 36090-ET

VG-85 +V++V

2-03 365 32642 3.6 1212 3.1 1057

No-Fla Supersire 35773-ET

VG-86 VVVVV

1-10 332 30480 4.2 1266 3.5 1080

No-Fla Shine-ET GP-83

4th Dam:

No-Fla Massey 30194-TW

VG-85 VVGE+

2-01 365 26990 3.7 1010 3.4 920

3-06 305 30810 3.6 1114 3.4 1043

5th Dam:

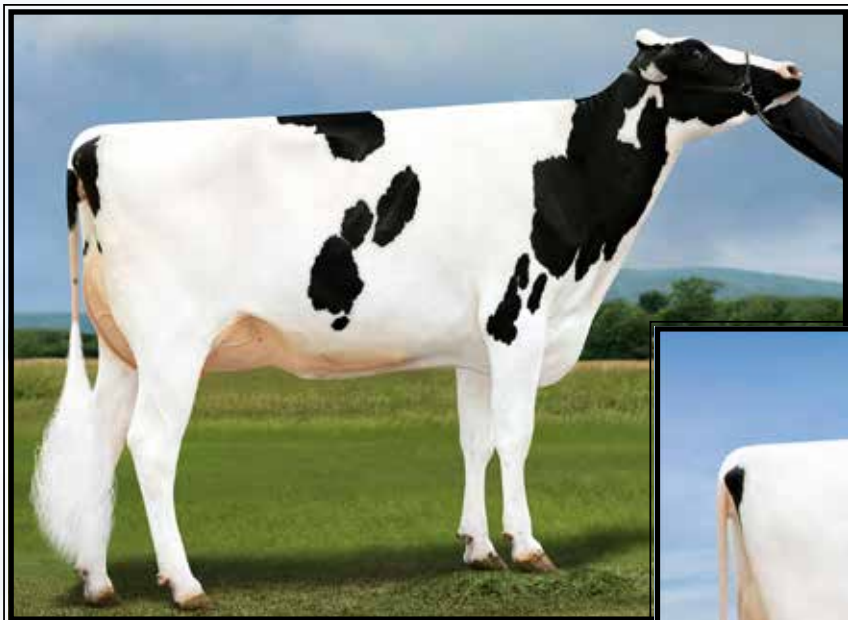
No-Fla Oman Liana 21974

VG-85 V+++V

4-03 305 22300 4.7 1091 3.7 862

Han Hopman

Fun in the Sun ~ NY PICNIC STYLE



**Al-Lew Monterey Ashley-ET
UG-89**

(Full sister to the 2nd Dam of Lot 19)



**Al-Lew Mgl Astute 1207-ET
EX-91,2E VEVVE**

2-04 365 30290 4.1 1241 3.4 1034
(3rd Dam of Lot 19)

LOT 19

SS-TM Crimson Ablaze-ET

3203249983 99RHA-I
Born 2/10/19 4/19 PTA +2844GTPI
+1851M +.09% +95F +.04% +68P
+961NMS +6.9PL +1.9DPR 2.76SCS
+1.73T +2.00UDC +1.63FLC
+211FE +2.9FI 7.4%SCE
+986CMS

Tom Mercurio & Scott Sollenberger

2504 Pioneer Drive
Saint Thomas, PA 17252
804-306-8925

ABS Crimson-ET

3141494296 4/19 PTA +2822GTPI
+1570M +.20% +116F +.06% +65P
+1045NMS +7.4PL +1.4DPR 2.73SCS
+1.10T +.95UDC +.93FLC 75%R
Spectre X GP-83 Rubicon

Al-Lew Jedi Avatar 1459-ET

3142478597 4/19 PTA +2682GTPI
+1891M +54F +66P +725NMS +5.5PL
+1.9DPR +2.77T +3.01UDC +1.12FLC
-Fresh 5/1/19
Sire: S-S-I Montross Jedi-ET

2nd Dam:

**Al-Lew Mon Aberdeen 1326-ET
VG-85 +VV+V**
2-05 313 18490 4.9 902 3.6 662

3rd Dam: (Pictured above)

**Al-Lew Mgl Astute 1207-ET
EX-91,2E VEVVE**
2-04 365 30290 4.1 1241 3.4 1034

4th Dam:

**Al-Lew Dmn Amazon 1059-ET
EX-90 VVVEE**
3-04 365 33440 3.7 1230 3.4 1134

5th Dam:

**GBM Shottle America-ET
VG-86 VV+VV**
2-02 365 29740 3.8 1130 3.4 1017

6th Dam:

**GBM Durham BC Annabell
EX-90 VEVEE DOM**
2-03 365 40670 4.1 1673 3.0 1202
3-06 365 40050 4.2 1683 3.0 1201
Lifetime 118720 4.4 5253 3.3 3961

7th Dam:

**GBM Charles Janelle
EX-93,2E EEEEE DOM**
6-03 365 31640 4.6 1471 3.3 1054
Lifetime 137890 4.8 6645 3.6 4953

8th Dam:

**GBM Val Blackstar Jean-ET
EX-94,3E EEEEE GMD-DOM**
8-05 365 37180 3.9 1458 3.0 1119
Lifetime 238190 4.1 9734 3.4 8000

9th Dam:

**GBM Valiant Janice
EX-92,2E EEEE DOM**
5-09 365 30860 3.5 1080 3.3 1007
Lifetime 126200 3.5 4437 3.4 4235

10th Dam: Sylvan-Dell M C Janice

EX-91,2E EEEV DOM
6-03 314 29600 3.9 1152

11th Dam: Sylvan-Dell Atlas Jill

EX-90,2E EVEV
4-06 305 20320 3.5 717

*Same family as 'Aristocrat'
-he sold for \$620,000 in World Classic

Han Hopman

Fun in the Sun ~ NY PICNIC STYLE



Cookiecutter Sshot Honor-ET VG-85 UU++U

2-06 365 33200 4.5 1480 3.7 1212

(2nd Dam of Lots 3 & 20)

LOT 20

***Selling buyers choice of the 2 heifers below.**

Cookiecutter Honorof-ET #5894

3149941438 99%RHA-NA
Born 8/7/18 4/19 PTA +2781GTPI
+1634M +.16% +107F +.07% +71P
+999NMS\$ +6.6PL +.9DPR 2.93SCS
+1.07T +1.98UDC +.97FLC
+265FE +1.4FI 4.8%SCE +1036CMS\$
+157RZG

or

Cookiecutter Honorum-ET #5878

3149941422 99%RHA-NA
Born 8/5/18 4/19 PTA +2817GTPI
+1127M +.12% +76F +.09% +60P
+891NMS\$ +6.7PL +2.8DPR 2.77SCS
+2.26T +2.85UDC +1.66FLC
+187FE +2.9FI 5.3%SCE +939CMS\$
+149RZG

***Both ready to IVF**

Cookiecutter Holsteins

239 Vaughn Road
Hudson Falls, NY 12839
518-858-6156

Bomaz Skywalker-ET

3137878481 4/19 PTA +2745GTPI
+1491M +.06% +73F +.10% +73P
+893NMS\$ +6.6PL +2.3DPR 2.85SCS
+1.46T +1.89UDC +.88FLC 78%R
Jedi X GP-83 Cabriolet

Cookiecutter Mdy Honorit-ET

3134739678 4/19 PTA +2656GTPI
+1221M +76F +57P +845NMS\$ +6.0PL
+1.6DPR +1.52T +2.39UDC +1.26FLC
Sire: Bacon-Hill Pety Modesty-ET

2nd Dam: (Pictured above)
Cookiecutter Sshot Honor-ET
VG-85 VV++V
2-06 365 33200 4.5 1480 3.7 1212

3rd Dam:
Cookiecutter Jacey Hacey-ET
VG-87 VV++E
3-00 305 40580 2.9 1177 3.2 1290
Lifetime 143360 3.3 4749 3.1 4470
***9th generation EX mammary!**

4th Dam:
Cookiecutter Mom Halo-ET
2-09 VG-88 VV+VE DOM
2-00 365 35280 5.2 1819 3.7 1304
***#3 Int'l Global Cow of the Year 2018**

5th Dam:
Cookiecutter Gld Holler-ET
VG-88 VVV+E DOM
2-03 365 40730 3.5 1410 3.1 1249
***Nom. Int'l Cow of the Year 2016**

6th Dam:
Ms Kings-Rnsm Champ Haley-ET
EX-90 EEVVE GMD-DOM
3-11 365 43690 3.7 1625 3.1 1357

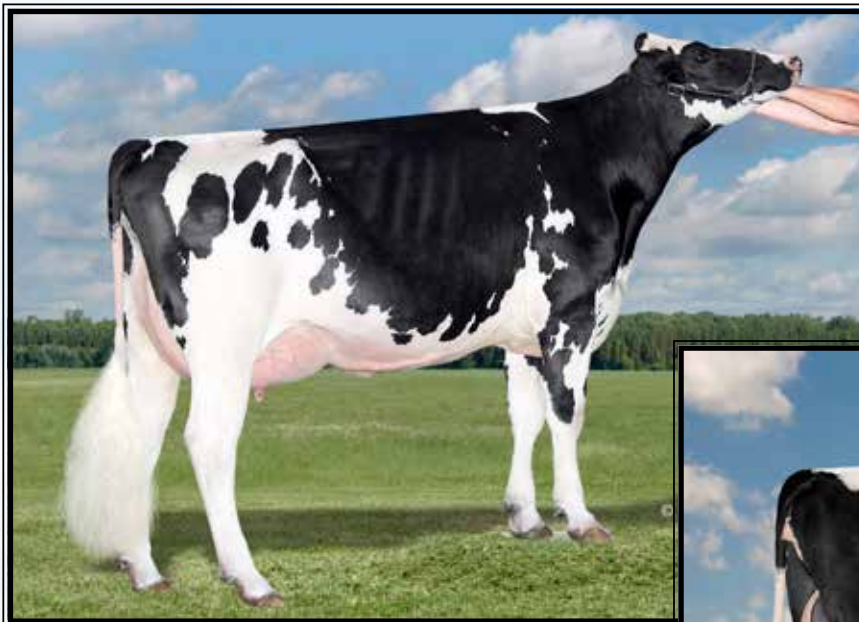
7th Dam: Regancrest-JDV Hanna-ET
EX-90 EEVVE
4-07 365 45110 4.3 1922 3.2 1449
8th Dam: Long-Haven Rudolph Dee-ET
EX-90,2E EVVEE GMD-DOM
2-11 365 32720 4.8 1565 3.8 1252
Lifetime 166900 4.3 7099 3.5 5884

9th Dam: Regancrest Elton Disrael-ET
VG-88 EX-MS DOM
2-04 365 33617 4.5 1499 3.5 1169

Full bro: Regancrest Elton Durham-ET
10th Dam: Snow-N Denises Dellia
EX-95,2E EEEEE GMD-DOM
6-00 365 35230 4.0 1425 3.0 1049
Lifetime 180240 3.9 7108 3.2 5723
***Dam of sires 'Durham' & 'Dundee'**

11th Dam: Snow-N Dorys Denise
EX-90,2E EX-MS GMD-DOM
5-09 365 33350 3.8 1256 3.1 1038
Lifetime 114010 3.6 4153 3.2 3649

Fun in the Sun ~ NY PICNIC STYLE



**Cookiecutter Epic Hazel-ET
EX-92,2E EEVVE DOM**

5-10 350 38080 4.3 1635 3.6 1354
(2nd Dam of Lot 21 and
3rd Dam of Lots 28 & 43)



**Cookiecutter Jedi Hanawi
VG-86 UU+UU**

1-08 329 30830 3.6 1116 3.2 1001
(Dam of Lot 21)

LOT 21 #6285

Cookiecutter Hanuey

3149941829 99%RHA-I
Born 11/27/18 4/19 PTA +2832GTPI
+1845M +.05% +84F +.05% +72P
+965NMS +8.0PL +2.0DPR 2.76SCS
+1.83T +2.19UDC +1.46FLC
+214FE +2.5FI 6.5%SCE
+971CMS

A2A2

***Ready to IVF**

Cookiecutter Holsteins

239 Vaughn Road
Hudson Falls, NY 12839
518-858-6156

T-Spruce Frazzled Huey-ET

3142490264 4/19 PTA +2613GTPI
+1458M +.18% +105F +.05% +59P
+957NMS +6.9PL +1.5DPR 2.62SCS
+1.84T +1.78UDC +1.53FLC 76%R
Frazzled X GP-83 Silver

Cookiecutter Jedi Hanawi

2-10 VG-86 VV+VV 3134739133
4/19 PTA +2632GTPI +1778M +52F
+64P +750NMS +6.8PL +2.4DPR
+1.93T +2.01UDC +1.26FLC
1-08 329 30830 3.6 1116 3.2 1001
Sire: S-S-I Montross Jedi-ET
(Pictured above)

Full brother:

7H13734 Hodedoe +2700G +2.27T

Mat. brother:

7H12993 Humblenkind +2712G +2.54T

**2nd Dam: (Pictured above)
Cookiecutter Epic Hazel-ET
EX-92,2E EEVVE DOM**

1-11 307 23100 4.2 937 3.7 854
2-11 284 26980 3.9 1054 3.7 989
3-10 281 28330 4.1 1166 3.6 1023
4-10 315 32590 4.8 1559 3.6 1180
5-10 350 38080 4.3 1635 3.6 1354
Lifetime 159030 4.3 6874 3.6 5725

***9th generation EX-MS**

***Dam of 29H17747 Harper
-#1 Germany & #7 US proven list**

3rd Dam: Cookiecutter Mom Halo-ET

2-09 VG-88 VV+VE DOM
2-00 365 35280 5.2 1819 3.7 1304

***#3 Int'l Global Cow of the Year 2018**

**4th Dam: Cookiecutter Gld Holler-ET
VG-88 VVV+E DOM**

2-03 365 40730 3.5 1410 3.1 1249

***Nom. Int'l Global Cow of the Year 2016**

5th Dam:

Ms Kings-Rnsm Champ Haley-ET

EX-90 EEVVE GMD-DOM
3-11 365 43690 3.7 1625 3.1 1357

6th Dam: Regancrest-JDV Hanna-ET

EX-90 EEVVE
4-07 365 45110 4.3 1922 3.2 1449

7th Dam: Long-Haven Rudolph Dee-ET

EX-90,2E EVVEE GMD-DOM
2-11 365 32720 4.8 1565 3.8 1252

Lifetime 166900 4.3 7099 3.5 5884

8th Dam: Regancrest Elton Disrael-ET

VG-88 EX-MS DOM
2-04 365 33617 4.5 1499 3.5 1169

Full bro: Regancrest Elton Durham-ET

9th Dam: Snow-N Denises Dellia

EX-95,2E EEEEE GMD-DOM
6-00 365 35230 4.0 1425 3.0 1049

Lifetime 180240 3.9 7108 3.2 5723

***Dam of sires 'Durham' & 'Dundee'**

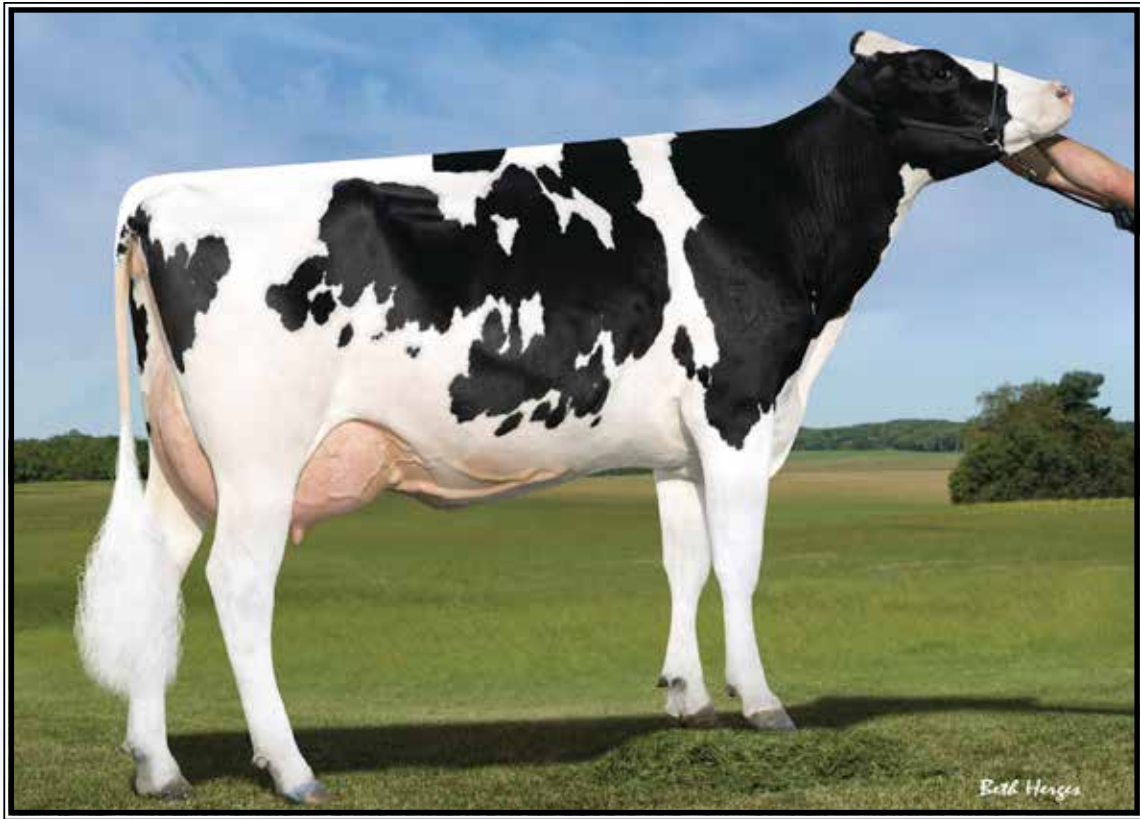
10th Dam: Snow-N Dorys Denise

EX-90,2E EX-MS GMD-DOM
5-09 365 33350 3.8 1256 3.1 1038

Lifetime 114010 3.6 4153 3.2 3649

Han Hopman

Fun in the Sun ~ NY PICNIC STYLE



Sandy-Valley Morgan Era-ET GP-83 +G+U+ GMD-DOM

2-02 365 34790 4.2 1450 3.6 1258

(2nd Dam of Lot 22)

LOT 22

Ensenada-DS Dynasty Emma-ET

3139885989 99%RHA-NA
Born 1/13/19 4/19 PTA +2775GTPI
+1665M +.19% +117F +.03% +59P
+1020NMS +7.2PL +.2DPR 2.72SCS
+1.36T +1.84UDC +.91FLC
+239FE +.6FI 6.6%SCE
+1041CMS

*Top 10 NMS and CMS Dynasty dtr.

*Unique heifer w/ big NMS- Jedi, Modesty & Frazzled free pedigree!

*Ready to IVF soon

Duane Seiz and

Joshua & Karly Bishop

5408 North Branch Rd
Pipersville, PA 18947
215-651-6167

Mr Rubicon Dynasty-ET

3132198398 4/19 PTA +2821GTPI
+1687M +.16% +110F +.08% +73P
+1003NMS +6.9PL +.3DPR 2.84SCS
+1.71T +1.57UDC +1.19FLC 81%R
Rubicon X VG-87 GMD-DOM Robust

Pine-Tree Era Achie 7615-ET

3145982561 4/19 PTA +2596GTPI
+1458M +103F +53P +844NMS +4.9PL
+1.40T +1.71UDC +1.16FLC
-Fresh 6/4/19
Sire: ABS Achiever-ET

Maternal sister:

Sandy-Valley Eternity-ET
VG-88 VEVVV

#1 GTPI Cow of the Breed at +2842G!

(Pictured above)

*Has 2 sons @ +3007G & +2956G!

2nd Dam: (Pictured above)
Sandy-Valley Morgan Era-ET
GP-83 +G+V+ GMD-DOM
2-02 365 34790 4.2 1450 3.6 1258

3rd Dam:
Sandy-Valley RBS Emerald-ET
VG-88 EEVVV GMD
3-11 348 42010 4.2 1771 3.1 1316
Life-to-Date 184897 4.1 7552 3.2 5988

Maternal sister:

Sandy-Valley Robust Ruby-ET EX-90
2-04 305 29450 3.2 950 3.3 971

*Dam of sire 'Rubicon' +2794G

4th Dam:
Sandy-Valley Plane Sapphire
VG-87 VV+VV DOM
2-00 365 39130 3.3 1301 3.0 1175

*Dam of Saloon & Sterling

5th Dam:
Sandy-Valley Bolt Sheila-ET
EX-90 EEVEV
2-02 365 44790 3.6 1607 2.9 1294

6th Dam:
Sandy-Valley Forbid Sully
VG-87, VG-MS GMD
2-03 365 35110 3.7 1310 3.1 1095

7th Dam: Orthoapple Marshall Alia-ET
VG-89, VG-MS GMD-DOM
2-04 365 36210 4.4 1605 3.2 1154

8th Dam: Regancrest-JB Tatum-ET
VG-87, VG-MS DOM
2-04 365 32682 3.6 1163 3.2 1059

9th Dam: Regancrest Tesk Della
EX-90 VEVEE GMD-DOM
5-11 365 35510 3.5 1234 3.2 1134

*Nom. Global Cow of the Year 2006

10th Dam: Snow-N Denises Dellia
EX-95,2E GMD-DOM
7-06 365 35610 4.0 1431 2.9 1035

*Dam of Durham & Dundee

11th Dam: Snow-N Dorys Denise
EX-90,2E EX-MS GMD-DOM
5-09 365 33350 3.8 1256 3.1 1038

Han Hopman

Fun in the Sun ~ *NY PICNIC STYLE*



View-Home Mrdian Iowa-ET VG-86 UUU+U DOM

2-02 365 35670 3.8 1342 3.3 1166

(2nd Dam of Lot 23)

LOT 23

Westcoast Postve Imogene 8189

13318971C 99%RHA-I HH5
Born 1/6/19 4/19 PTA +2800GTPI
+1957M +.16% +119F +.04% +71P
+1004NMS +5.4PL -.3DPR 2.91SCS
+1.91T +2.14UDC +.52FLC
+267FE +.3FI 7.2%SCC
+1025CMS

A2A2

*Ready to IVF soon

“FREE trucking to Fradon Farms,
Ontario to the new buyer”

Westcoast Holsteins

c/o Darren Kooyman

47749 Prairie Central Rd

Chilliwack, BC V2P 6H3 CANADA

Darren 604-799-6376

Progenesis Positive

12609140C 4/19 PTA +2848GTPI
+1740M +.22% +128F +.07% +73P
+992NMS +4.5PL -.1DPR 2.92SCS
+2.27T +2.11UDC +.63FLC 78%R
Duke X Rubicon

BGP Modesty Imogene-ET

143970019 4/19 PTA +2740GTPI
+1740M +86F +61P +930NMS +6.6PL
+1.4DPR +1.91T +2.54UDC +.94FLC
-Fresh May 11, 2019 and looks great!
Sire: Bacon-Hill Pety Modesty-ET
*Full sisters have sold for up to \$162,500
Mat. bro.: 734HO91 Yolo +2742GTPI

2nd Dam: (Pictured above)

View-Home Mrdian Iowa-ET
VG-86 VVV+V DOM

2-02 365 35670 3.8 1342 3.3 1166

3rd Dam:

Pine-Tree 2149Robst 4846-ET
VG-87 EEV+V DOM

2-04 365 32001 4.7 1520 3.4 1097

*Offspring have sold for up to \$100,000

*Tremendous genomic transmitter!!

*8 sons in active AI including Monterey,
Powerball-P, Missouri and Cashflow

4th Dam:

Pine-Tree Zenith Sheen
VG-87 VV+VV DOM

1-11 365 27883 3.9 1092 3.0 855

5th Dam:

Pine-Tree Martha Sheen-ET
VG-86 VV+VV DOM

1-11 365 31210 4.2 1305 3.1 968

6th Dam: Pine-Tree Missy Martha-ET
VG-86 VVV+V DOM

2-02 365 34730 3.6 1266 3.1 1070

7th Dam:

Wesswood-HC Rudy Missy-ET
EX-92,3E EEEEE GMD-DOM

4-11 365 40880 4.1 1665 3.4 1385

Lifetime 119610 4.1 4885 3.4 4031

*Global Cow of the Year 2014

8th Dam: Wesswood Elton Mimi
EX-90 EEEEE GMD-DOM

3-05 365 35380 3.3 1160 3.0 1054

9th Dam: Wesswood Mandingo Ivy
VG-87 VEEVV

6-05 365 36330 3.6 1305 2.8 1018

Lifetime 144060 3.4 4933 2.9 4139

10th Dam: Wesswood Astro Matt Ester
VG-87 VEVV GMD-DOM

6-08 365 31860 3.5 1125 2.9 921

Lifetime 140110 3.6 5029 3.0 4158

11th Dam: Wesswood Bell Claudette
VG-87 GMD-DOM

8-04 365 38150 3.8 1443 2.8 1064

Lifetime 280980 3.6 9997 2.9 8092

Han Hopman

Fun in the Sun ~ NY PICNIC STYLE



No-Fla Supersire 36090-ET

VG-85 +U++U

2-03 365 32642 3.6 1212 3.1 1057

(2nd Dam of Lot 24)



No-Fla Delta Sary 44694-ET

(Dam of Lot 24)

LOT 24

Winstar Big Al 5852-ET

3206460899 98%RHA-I

Born 4/3/19 6/19 PTA +2813GTPI

+1640M +.22% +124F +.05% +64P

+1017NMS +6.7PL +.0DPR 2.76SCS

+1.73T +1.55UDC +.85FLC

+250FE +1.0FI 7.3%SCE

+1047CMS

*Top 5 NMS and CMS Big Al dtr.

Winstar Genetics LLC

1470 N 750 E

Shelley, ID 83274

208-221-0904

A-S-Cannon Frzzld Big Al-ET

320640899 4/19 PTA +2835GTPI

+1338M +.24% +119F +.07% +61P

+1015NMS +7.1PL +.5DPR 2.69SCS

+1.80T +2.02UDC +.92FLC 75%R

Frazzled X Delta

No-Fla Delta Sary 44694-ET

2-07 GP-80 G++++ 3136805553

4/19 PTA +2731GTPI +2139M

+96F +65P +905NMS +6.5PL

+1.88T +2.05UDC +1.01FLC

2-01 233 24620 4.1 1003 3.1 755 RIP

Sire: Mr Mogul Delta 1427-ET

(Pictured above)

2nd Dam: (Pictured above)

No-Fla Supersire 36090-ET

VG-85 +V++V

2-03 365 32642 3.6 1212 3.1 1057

FULL sisters:

No-Fla Supersire 35773-ET

VG-86 VVVVV

1-10 332 30480 4.2 1266 3.5 1080

No-Fla Spersire 36193-TW-ET

GP-83 V++GV

4-00 305 32240 4.1 1322 3.3 1059

No-Fla Shine-ET GP-83

3rd Dam:

No-Fla Massey 30194-TW

VG-85 VVGE+

2-01 365 26990 3.7 1010 3.4 920

3-06 305 30810 3.6 1114 3.4 1043

4th Dam:

No-Fla Oman Liana 21974

VG-85 V+++V

4-03 305 22300 4.7 1091 3.7 862

Han Hopman

Fun in the Sun ~ NY PICNIC STYLE



Den-K Bookem Brooke 524 VG-88 VEUUU

6-01 334 31910 3.5 1128 3.4 1069

(4th Dam of Lot 25)

LOT 25

Trifecta M 18434-ET

3206235082 99%RHA-I
Born 3/26/19 6/19 PTA +2813GTPI
+2172M +.11% +113F +.00% +65P
+993NMS +6.3PL +.5DPR 2.75SCS
+1.91T +1.74UDC +1.27FLC
+233FE +1.3FI 6.5%SCE
+998CMS

Trifecta Genetics c/o Aaron Matheron

21859 Crane Ave.
Hilmar, CA 95324
209-652-3540

ABS Crimson-ET

3141494296 4/19 PTA +2822GTPI
+1570M +.20% +116F +.06% +65P
+1045NMS +7.4PL +1.4DPR 2.73SCS
+1.10T +.95UDC +.93FLC 75%R
Spectre X GP-83 Rubicon

Trifecta R Outtake-ET

3142197501 4/19 PTA +2661GTPI
+1874M +85F +61P +792NMS +4.5PL
+2.92T +2.66UDC +1.62FLC
-Fresh in May milking 98 lbs/day
-Looks like easy VG & VG-MS
Sire: Progenesis Granite-ET

2nd Dam:

Trifecta M Rhianna
VG-88 VE+EV

3rd Dam:

Den-K Massey Melody 1167
VG-86 VV+VV

4th Dam: (Pictured above)

Den-K Bookem Brooke 524
VG-88 VEUUU
4-11 305 30820 3.7 1146 3.5 1088
6-01 334 31910 3.5 1128 3.4 1069
Lifetime 139530 3.5 4880 3.5 4875

5th Dam:

Den-K Alexander Darla
VG-85 +VV+V
4-02 334 30510 4.1 1246 3.2 989
5-03 305 31310 3.7 1172 3.3 1020
Lifetime 120040 3.9 4718 3.3 3984

6th Dam:

Den-K CT Marion Madeline
GP-83 +VVG

7th Dam:

Den-K Durham Good Time
VG-87 VEVVV GMD-DOM
3-00 34890 3.4 1189 3.2 1112
Lifetime 105980 3.3 3497 3.2 3368

8th Dam:

Den-K Startmor Good Time-ET
VG-88 VEVVV GMD-DOM
6-03 365 38910 3.7 1430 3.2 1262
Lifetime 158820 3.6 5774 3.3 5238

9th Dam: Den-K Tong Bea-TW

VG-85 GE+EV GMD-DOM
3-03 305 28080 4.3 1201 3.3 937

10th Dam: Den-K Rotate Bea-ET

EX-90 VEEE GMD-DOM
4-03 305 28560 4.1 1183 3.2 901

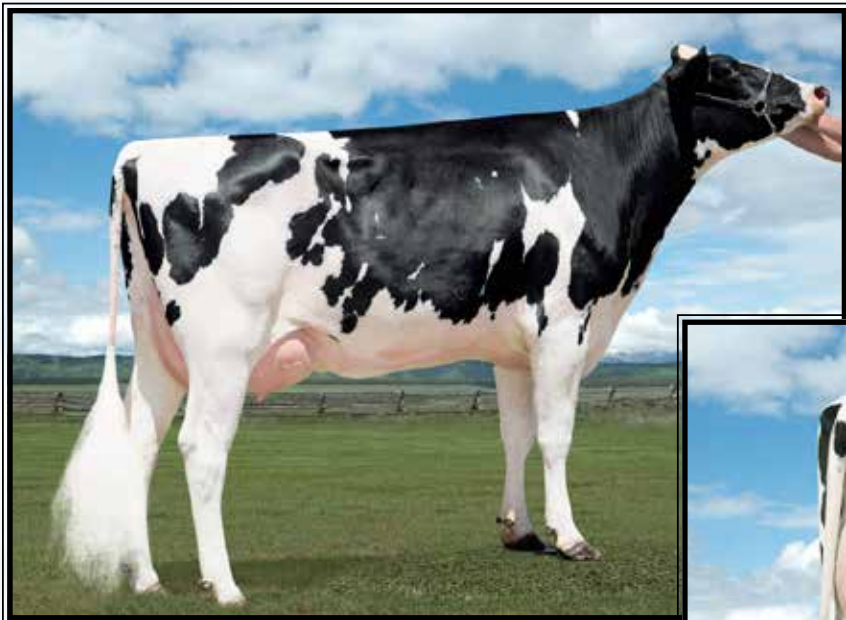
11th Dam: Den-K Mars Marie

EX-90,2E VEEE GMD-DOM
Lifetime 141670 3.4 4881 3.0 2763

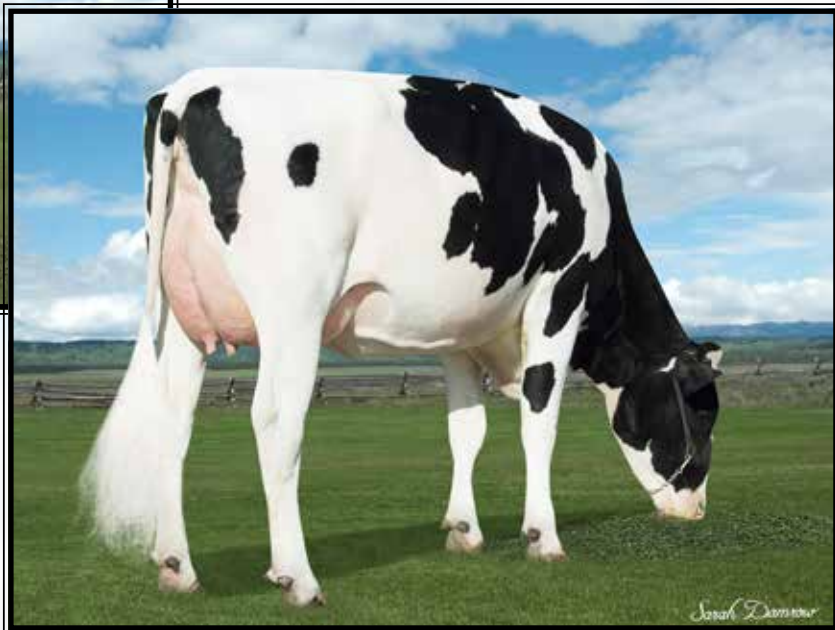
12th Dam: VG-86

Han Hopman

Fun in the Sun ~ NY PICNIC STYLE



IHG Nominee Mer 9040-ET
UG-85 VUFV+
 2-02 365 35900 4.9 1767 3.6 1282
 (3rd Dam of Lot 26)



Seagull-Bay Jedi Mirage-ET
 (Dam of Lot 26 Donor)

LOT 26
IVF Session

**Buyer purchasing rights to control the next IVF session(s). Buyer is guaranteed IVF sessions until a minimum of 8 #1 or #2 IVF embryos are produced. Buyer keeps all resulting embryos from these controlled IVF sessions.*

Buyer is responsible for all costs of the aspiration and mating sire decisions.

Dam of IVF Session:

Winstar Crimson Gem-ET

3203025060 99%RHA-I
 Born 11/28/18 4/19 PTA +2853GTPI
 +1354M +.15% +94F +.10% +69P
 +1049NMS\$ +9.2PL +3.6DPR 2.60SCS
 +.64T +.65UDC +.78FLC
 +230FE +3.9FI 6.1%SCE
 +1103CMS\$

Winstar Genetics LLC

1470 N 750 E
 Shelley, ID 83274
 208-221-0904

ABS Crimson-ET

3141494296 4/19 PTA +2822GTPI
 +1570M +.20% +116F +.06% +65P
 +1045NMS\$ +7.4PL +1.4DPR 2.73SCS
 +1.10T +.95UDC +.93FLC 75%R
 Spectre X GP-83 Rubicon

Seagull-Bay Jedi Mirage-ET

2-07 GP-80 G+FG+ 3135938778
 2-00 291 23180 3.4 779 3.3 771 RIP
 Sire: S-S-I Montross Jedi-ET
 (Pictured above)

3rd Dam: (Pictured above)
IHG Nominee Mer 9040-ET
VG-85 VVFV+
 2-02 365 35900 4.9 1767 3.6 1282
 3-06 308 25450 4.5 1138 3.5 902

4th Dam:
Roorda SS Merritt 15889-ET
VG-86 VV++V
 2-01 305 25110 5.8 1462 3.2 810

5th Dam:
Roorda OB Mirella 15270-ETS
EX-90 EEVVE
 3-01 285 32190 3.8 1217 3.3 1064

6th Dam: Roorda Shottle 6802-ET
EX-90 EEEVE DOM
 5-02 314 39190 3.6 1423 2.9 1133
 Lifetime 127570 3.8 4809 2.9 1133

7th Dam: Seagull-Bay Manat Mirage-ET
EX-90 VEVVE GMD-DOM
 3-06 365 35900 3.8 1364 3.4 1229

8th Dam: Lynmead Celsius Minnow-ET
EX-91,2E EEEVV GMD-DOM
 4-10 365 49550 3.7 1857 3.2 1592
 Lifetime 255910 3.7 9446 3.3 8481

9th Dam: CMV Melwood Mindy-ET
VG-85 VE+V GMD-DOM
 4-01 365 36341 3.6 1305 3.4 1239

10th Dam: Briarpatch-R Misty-ET
VG-85 +E+V GMD-DOM
 2-02 365 24680 4.8 1176 3.1 776

11th Dam: Rilara Mars Las Ravena
EX-91 EVEE GMD-DOM
 4-03 305 29030 4.6 1329

12th Dam:
Rilara Haven Charming Las-TW
VG-87 VEVV GMD-DOM
 6-10 365 30490 3.4 1029
 Lifetime 164400 3.4 5651

13th Dam:
Rag Apple Locust-Grove Charm
VG-86 +EVV GMD-DOM
 5-02 365 26320 3.6 948

Han Hopman

Fun in the Sun ~ NY PICNIC STYLE



Main-Drag Rubicon Email VG-88 VEU+E

2-09 365 32390 3.9 1257 3.3 1068

(2nd Dam of Lot 5 and 3rd Dam of Lot 27)

LOT 27 IVF Session

**Buyer purchasing rights to control the next IVF session(s). Buyer is guaranteed IVF sessions until a minimum of 8 #1 or #2 IVF embryos are produced. Buyer keeps all resulting embryos from these controlled IVF sessions.*

Buyer is responsible for all costs of the aspiration and mating sire decisions.

Dam of IVF Session:

Cookiecutter Emoji #6521

3200123002 99%RHA-I
Born 2/22/19 4/19 PTA +2881GTPI
+464M +.25% +86F +.10% +42P
+1037NMS\$ +10.4PL +3.9DPR 2.78SCS
+1.82T +2.72UDC +2.05FLC
+193FE +4.2FI 5.5%SCE +1087CMS\$
+159RZG

A2A2

#1 NMS, CMS and #2 gTPI Delta

Cookiecutter Holsteins

239 Vaughn Road
Hudson Falls, NY 12839
518-858-6156

Mr Mogul Delta 1427-ET

72128216 4/19 PTA +2774GTPI
+1613M +.10% +90F +.02% +55P
+938NMS\$ +7.8PL +1.3DPR 2.90SCS
+2.22T +2.81UDC +1.61FLC 99%R
Mogul X VG-87 GMD-DOM Robust

Main-Drag Modesty Emba-ET

2-03 GP-82 ++GG+ 3139198517
4/19 PTA +2635GTPI +366M +84F
+31P +865NMS\$ +7.8PL +3.2DPR
+1.26T +2.00UDC +1.35FLC
Sire: Bacon-Hill Pety Modesty-ET

3rd Dam: (Pictured above) Main-Drag Rubicon Email VG-88 VEU+E

1-09 365 30880 3.9 1192 3.4 1036
2-09 306 32390 3.9 1257 3.3 1068

4th Dam:

Winterhlm-WG Emotional VG-87 EV+VV

3-01 349 39950 3.4 1374 2.9 1178
4-02 338 38770 3.9 1516 3.0 1149
Lifetime 131430 3.6 4766 3.1 4055

5th Dam:

Winterhlm-WG Bax Elated-ET EX-92 EEEEE GMD

6-07 365 51600 3.8 1973 3.0 1532
Lifetime 197720 3.6 7177 3.2 6234

6th Dam:

Winterhlm-WG BG Elation-ET EX-93,2E EEE+E

5-01 365 41730 3.2 1348 3.4 1418
Lifetime 114160 3.4 3885 3.5 3963

7th Dam: Ridgedale Emotion-ET EX-90 VEEVE

4-00 365 27600 3.5 967 3.4 932

8th Dam: Ridgedale Emera EX-95,4E EEEEE

8-00 365 34200 4.0 1374 3.2 1098
Lifetime 178150 4.1 7309 3.4 6011

*2nd E. Fall Nat'l 125,000 lb cow 2008

9th Dam: Ridgedale Emma-ET VG-88 VEVVE

2-07 365 29680 3.6 1062 3.2 954

Maternal sistersto Emma:

Ridgedale Estelle-ET EX-95,3E
Lifetime 194340 3.7 7281 3.0 5828

10th Dam: Ridgedale Fond Example EX-95,3E EEEEE GMD

7-04 365 46050 3.8 1741 2.8 1267
Lifetime 185450 3.7 6854 3.1 5829

*3rd E. Spr. Nat'l Produce of Dam 1996

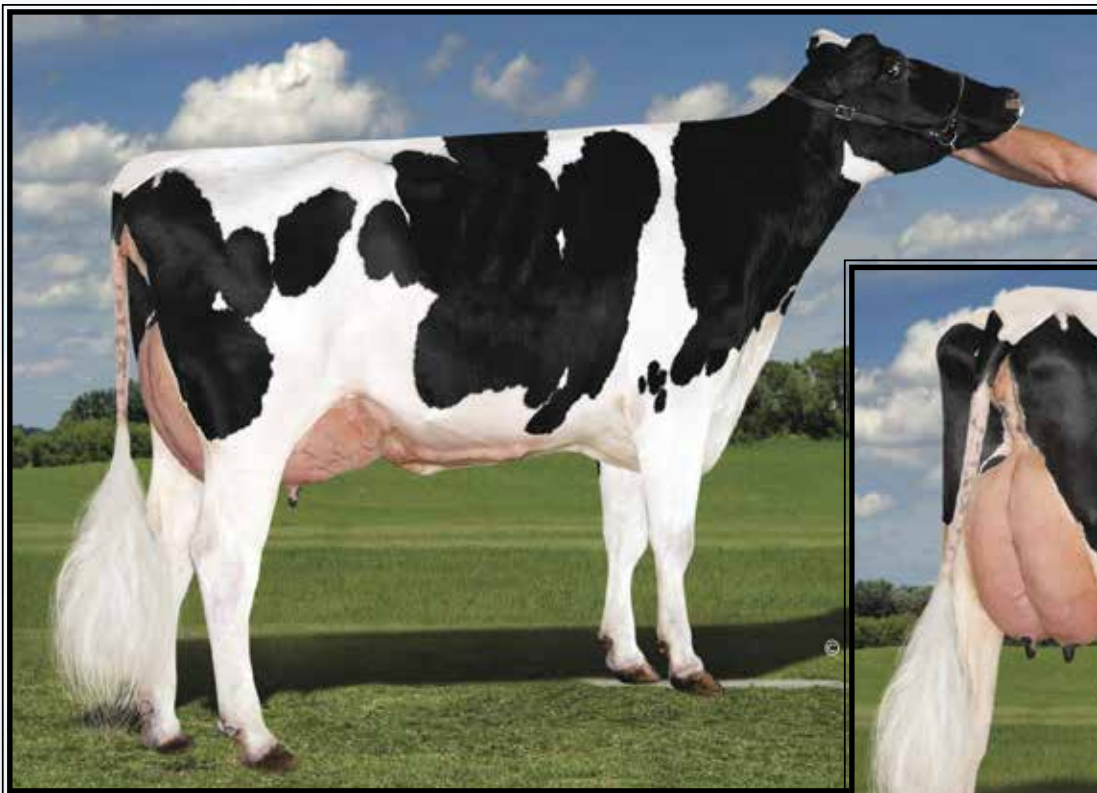
11th Dam: EX-90 EVEV

12th Dam: VG-87

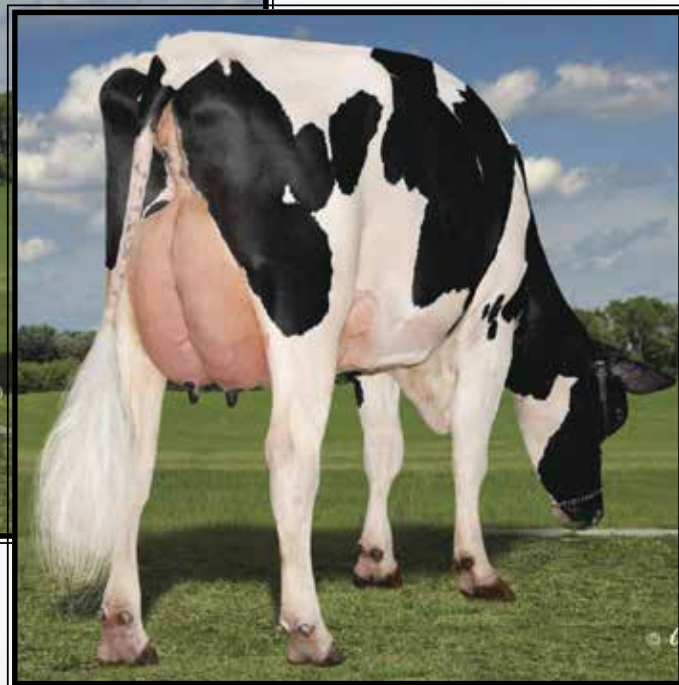
13th Dam: EX-90,2E EEVE

14th Dam: VG-85

Fun in the Sun ~ NY PICNIC STYLE



Cookicutter Supr Hazajo-ET
UG-87 UUUUU
 (Dam of Lots 28 & 43)



LOT 28
IVF Session

**Buyer purchasing rights to control the next IVF session(s). Buyer is guaranteed IVF sessions until a minimum of 8 #1 or #2 IVF embryos are produced. Buyer keeps all resulting embryos from these controlled IVF sessions.*

Buyer is responsible for all costs of the aspiration and mating sire decisions.

Dam of IVF Session:

Cookicutter Supr Hazajo-ET
3-03 VG-87 VVVVV 3134739117
 Born 2/18/16 4/19 PTA +2816GTPI
 +2641M +.01% +101F +.01% +84P
 +915NMS\$ +5.8PL +.3DPR 2.78SCS
 +2.64T +1.89UDC +.78FLC
 +226FE +.6FI 7.2%SCE +928CMS\$
 2-04 352 39660 3.4 1325 3.0 1170 RIP
 (Pictured above)
 #3 CTPI cow of the breed!
 *Potential 11 generation EX-MS

Cookiecutter Holsteins
 239 Vaughn Road
 Hudson Falls, NY 12839
 518-858-6156

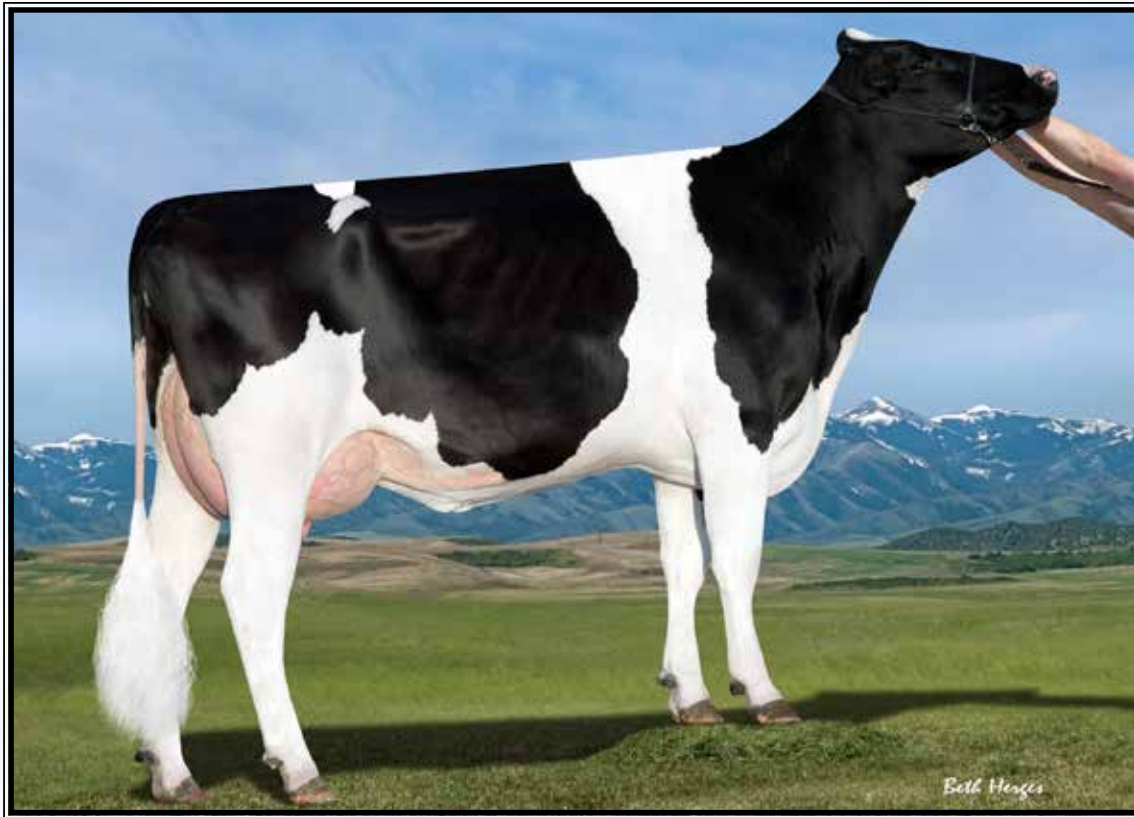
Uecker Supersire Josuper-ET
 70726929 4/19 PTA +2764GTPI
 +3194M -.04% +108F -.02% +92P
 +973NMS\$ +6.4PL -1.1DPR 2.81SCS
 +1.53T +1.17UDC -.02FLC 99%R
 Supersire X EX-90 GMD-DOM Beacon

Cookicutter MN Hazelle-ET
4-11 VG-89 VEVVE DOM
 3124844013 4/19 PTA +2575GTPI
 +1815M +57F +57P +671NMS\$ +5.5PL
 +1.2DPR +2.32T +2.35UDC +1.73FLC
 2-06 332 31260 3.8 1173 3.3 1038
 3-04 305 42640 3.6 1543 3.2 1381
 Sire: Bacon-Hill Montross-ET

Mat. brothers include:
7H13734 Hodedoe +2700G +2.27T
7H12993 Humblenkind +2712G +2.54T

3rd Dam: (Pictured w/ Lot 21)
Cookicutter Epic Hazel-ET
EX-92,2E EEVVE DOM
 1-11 307 23100 4.2 937 3.7 854
 2-11 284 26980 3.9 1054 3.7 989
 3-10 281 28330 4.1 1166 3.6 1023
 4-10 315 32590 4.8 1559 3.6 1180
 5-10 350 38080 4.3 1635 3.6 1354
 Lifetime 159030 4.3 6874 3.6 5725
 *9th generation EX-MS
 *Dam of 29H17747 Harper
 -#1 Germany & #7 US proven list
4th Dam: Cookiecutter Mom Halo-ET
2-09 VG-88 VV+VE DOM
 2-00 365 35280 5.2 1819 3.7 1304
 *#3 Int'l Global Cow of the Year 2018
5th Dam: Cookiecutter Gld Holler-ET
VG-88 VVV+E DOM
 2-03 365 40730 3.5 1410 3.1 1249
 *Nom. Int'l Cow of the Year 2016
6th Dam:
Ms Kings-Rnsm Champ Haley-ET
EX-90 EEVVE GMD-DOM
 3-11 365 43690 3.7 1625 3.1 1357
7th Dam: Regancrest-JDV Hanna-ET
EX-90 EEVVE
 4-07 365 45110 4.3 1922 3.2 1449
8th Dam: Long-Haven Rudolph Dee-ET
EX-90,2E EVVEE GMD-DOM
 2-11 365 32720 4.8 1565 3.8 1252
 Lifetime 166900 4.3 7099 3.5 5884
9th Dam: Regancrest Elton Disrael-ET
VG-88 EX-MS DOM
 2-04 365 33617 4.5 1499 3.5 1169
Full bro: Regancrest Elton Durham-ET
10th Dam: Snow-N Denises Dellia
EX-95,2E EEEEE GMD-DOM
 6-00 365 35230 4.0 1425 3.0 1049
 Lifetime 180240 3.9 7108 3.2 5723
 *Dam of sires 'Durham' & 'Dundee'
11th Dam: Snow-N Dorys Denise
EX-90,2E EX-MS GMD-DOM
 5-09 365 33350 3.8 1256 3.1 1038
 Lifetime 114010 3.6 4153 3.2 3649

Fun in the Sun ~ NY PICNIC STYLE



S-S-I Platinm Mason 9024-ET UG-86 U++VE

2-04 305 27350 3.9 1076 3.4 935

(3rd Dam of Lot 29)

LOT 29

Aardema Kenobi 44181

3151564585 99%RHA-I
Born 3/1/19 5/19 PTA +2818GTPI
+1580M +.16% +105F +.07% +68P
+1003NMS +7.1PL +.4DPR 2.73SCS
+1.48T +2.23UDC +.75FLC
+241FE +1.2FI 7.3%SCE
+1042CMS

*2 maternal brother going to Select!

Twin-Ridge Genetics

305 S County Line Rd
Jerome, ID 83338
Ashley 815-370-8713

De-Su 14222 Kenobi-ET

3141559616 4/19 PTA +2813GTPI
+1747M +.07% +84F +.08% +77P
+924NMS +6.6PL +1.9DPR 2.77SCS
+1.87T +2.34UDC +.19FLC 78%R
Jedi X VG-85 Spring

Aardema Frazzled 31442-ET

3139798839 4/19 PTA +2748GTPI
+1443M +95F +51P +947NMS +8.5PL
+.7DPR +1.62T +2.35UDC +1.67FLC
-Fresh 6/15/19
Sire Melarry Josuper Frazzled-ET

2nd Dam:
Triplecrown Delta 64-ET
VG-87 V++VV

3rd Dam: (Pictured above)
S-S-I Platinum Mason 9024-ET
VG-86 V++VE
2-04 305 27350 3.9 1076 3.4 935

4th Dam:
S-S-I Shamrock Mesa 7388-ET
VG-87 VVE+V 4/16 PTA +2352G
1-11 305 25280 4.0 1022 3.3 834

5th Dam:
Roystone Shot Mindy 2079-ET
VG-86 VVVVV DOM
2-02 365 34589 4.3 1489 3.3 1148
*Dam of 'Monarch' at Select!

6th Dam:
Seagull-Bay Oman Mirror-ET
VG-86 +VVVV DOM
3-00 365 36430 4.4 1606 3.6 1304
*Dam of Robust, Bob & Punch

7th Dam:
Seagull-Bay Manat Mirage-ET
EX-90 VEVVE GMD-DOM
3-06 365 35900 3.8 1364 3.4 1229

8th Dam:
Lynmead Celsius Minnow-ET *TV
EX-91,2E EEEVV GMD-DOM
4-10 365 49550 3.7 1857 3.2 1592
Lifetime 255910 3.7 9446 3.3 8481

9th Dam:
CMV Melwood Mindy-ET
VG-85 VE+V GMD-DOM
4-01 365 36341 3.6 1305 3.4 1239

10th Dam:
Briarpatch-R Misty-ET
VG-85 +E+V GMD-DOM
2-02 365 24680 4.8 1176 3.1 776

11th Dam:
Rilara Mars Las Ravena
EX-91 EVEE GMD-DOM
4-03 305 29030 4.6 1329

Han Hopman

Fun in the Sun ~ NY PICNIC STYLE



No-Fla Massey 30194-TW VG-85 VVGE+

3-06 305 30810 3.6 1114 3.4 1043

(4th Dam of Lots 18 & 30 and 3rd Dam of Lot 24)

LOT 30

Winstar Niko 5858-ET

3206460905 99%RHA-I
Born 4/5/19 5/19 PTA +2791GTPI
+1120M +.29% +123F +.08% +58P
+1003NMS +6.3PL +.2DPR 2.77SCS
+1.45T +2.03UDC +.94FLC
+247FE +.7FI 6.1%SCE
+1047CMS

***Top 5 NMS and CMS Niko dtr.**

Winstar Genetics LLC

1470 N 750 E
Shelley, ID 83274
208-221-0904

ABS Niko-ET

3141494450 4/19 PTA +2805GTPI
+1446M +.20% +112F +.05% +58P
+999NMS +6.6PL +1.4DPR 2.72SCS
+1.28T +1.83UDC +.94FLC 76%R
Achiever X VG-85 Josuper

No-Fla GS D Niko 31184-ET

3139798581 4/19 PTA +2627GTPI
+1468M +95F +52P +845NMS +5.9PL
+1.78T +2.21UDC +1.00FLC
-Fresh in June. Looks good.
Sire: Mr Mogul Delta 1427-ET

2nd Dam:

No-Fla Supersire 39191-ET
2-00 305 22890 4.0 912 3.1 707

3rd Dam:

No-Fla Epic Kendyl 34393-ET
2-11 330 30040 4.1 1234 3.4 1010

4th Dam:

**No-Fla Massey 30194-TW
VG-85 VVGE+**
2-01 365 26990 3.7 1010 3.4 920
3-06 305 30810 3.6 1114 3.4 1043

5th Dam:

**No-Fla Oman Liana 21974
VG-85 V+++V**
4-03 305 22300 4.7 1091 3.7 862

Han Hopman

Fun in the Sun ~ NY PICNIC STYLE



N-Springhope Yoder 2493-ET EX-90 VEEVE

3-01 304 36580 4.0 1454 3.2 1159

(2nd Dam of Lot 31)

LOT 31

N-Springhope Honda 3344

3205027048 99%RHA-I
 Born 3/1/19 5/19 PTA +2806GTPI
 +2040M +.01% +79F +.02% +68P
 +941NMS +7.7PL +1.3DPR 2.70SCS
 +1.86T +2.46UDC +1.68FLC
 +208FE +1.9FI 6.5%SCE
 +959CMS

Kevin & Barbara Nedrow

2819 County Rd 4

Clifton Springs, NY 14432

585-261-8182

N-Springhope Honda-ET

3140503758 4/19 PTA +2770GTPI
 +1557M +.06% +74F +.04% +60P
 +855NMS +5.8PL +1.9DPR 2.66SCS
 +2.25T +2.72UDC +1.77FLC 78%R
 Lylas X VG-87 Montross

N-Springhope Frazld 2889-ET

2-03 GP-81 G++++ 3140503776
 4/19 PTA +2690GTPI +1610M +105F
 +60P +942NMS +7.1PL +1.61T +1.81U
 -Fresh 3/1/19 w/ 93 lbs 4.1%F last test
 Proj. 305ME 30080M

Sire: Melarry Josuper Frazzled-ET

2 FULL brothers:

29HO18787 Escalate +2807GTPI

1HO13805 Avalino +2780GTPI

2nd Dam: (Pictured above)
N-Springhope Yoder 2493-ET
EX-90 VEEVE +2710G +858NMS
 2-01 305 27840 3.6 1016 3.3 916
 3-01 304 36580 4.0 1454 3.2 1159

3rd Dam:
N-Springhope Supersire 2076
VG-85 VV+GV
 2-03 335 32970 4.5 1498 3.4 1115
 3-03 288 34420 3.0 1033 2.9 988
 Lifetime 115030 3.9 4491 3.3 3774

4th Dam:
N-Springhope Niagra Ann-ET
EX-90 EE+EV
 5-02 303 34270 3.2 1146 2.9 1028
 Lifetime 187500 3.8 7147 3.0 5780

5th Dam:
Vision-Gan Mac Alice-ET
VG-88 EE+VV
 4-03 365 38190 3.0 1163 3.2 1216

6th Dam:
Applouis Jet Stream Alda-ET
VG-85 ++GVV DOM
 5-05 305 24980 3.7 925 3.3 824

7th Dam: Morningview Otsd April-ET
VG-87 VV+VE
 2-03 365 36010 4.3 1560 3.6 1291

8th Dam: Morningview Gibbon Judy-ET
VG-85 +V+VV GMD-DOM
 2-04 305 25010 3.9 964 3.2 799

9th Dam: Morningview Converse Judy
EX-93 EEEEE GMD-DOM
 4-05 365 38100 4.1 1565 3.3 1269

10th Dam: VG-87,EX-MS
 5-06 340 32040 3.9 1249 3.4 1089
 Lifetime 11030 3.7 41100 3.5 3880

11th Dam: VG-87 VEVV GMD-DOM
 4-08 357 37210 4.0 1480 3.2 1187

12th Dam: EX-91,2E EEVE GMD-DOM
 Lifetime 156590 4.0 6248 3.3 1696

13th Dam: VG-89 EEEV
 6-02 365 27700 4.1 1143F

Fun in the Sun ~ NY PICNIC STYLE



Hollerman Supersire 900 VG-85 VVV+U

4-05 305 32940 3.9 1301 3.3 1088

(3rd Dam of Lot 32)

LOT 32

Hollerman Kenobi 1351-ET

3204330668 99%RHA-I
Born 3/15/19 5/19 PTA +2819GTPI
+1192M +.21% +104F +.07% +56P
+984NMS +7.2PL +1.6DPR 2.49SCS
+1.52T +2.14UDC +.57FLC
+220FE +2.3FI 6.8%SCE
+1028CMS

Shawn Hollerman

18200 Dunlin Rd
Burtrum, MN 56318
320-760-1177

De-Su 14222 Kenobi-ET

3141559616 4/19 PTA +2813GTPI
+1747M +.07% +84F +.08% +77P
+924NMS +6.6PL +1.9DPR 2.77SCS
+1.87T +2.34UDC +.19FLC 78%R
Jedi X VG-85 Spring

Hollerman Frazzled 811Y-ET

3139800137 4/19 PTA +2693GTPI
+882M +92F +40P +898NMS +7.9PL
+2.2DPR +1.06T +1.61UDC +1.08FLC
-Due October 2, 2019
Sire: Melarry Josuper Frazzled-ET

2nd Dam:

Hollerman Delta 386Y G-79

2-04 305 29740 4.1 1231 3.3 981

3rd Dam: (Pictured above)

Hollerman Supersire 900

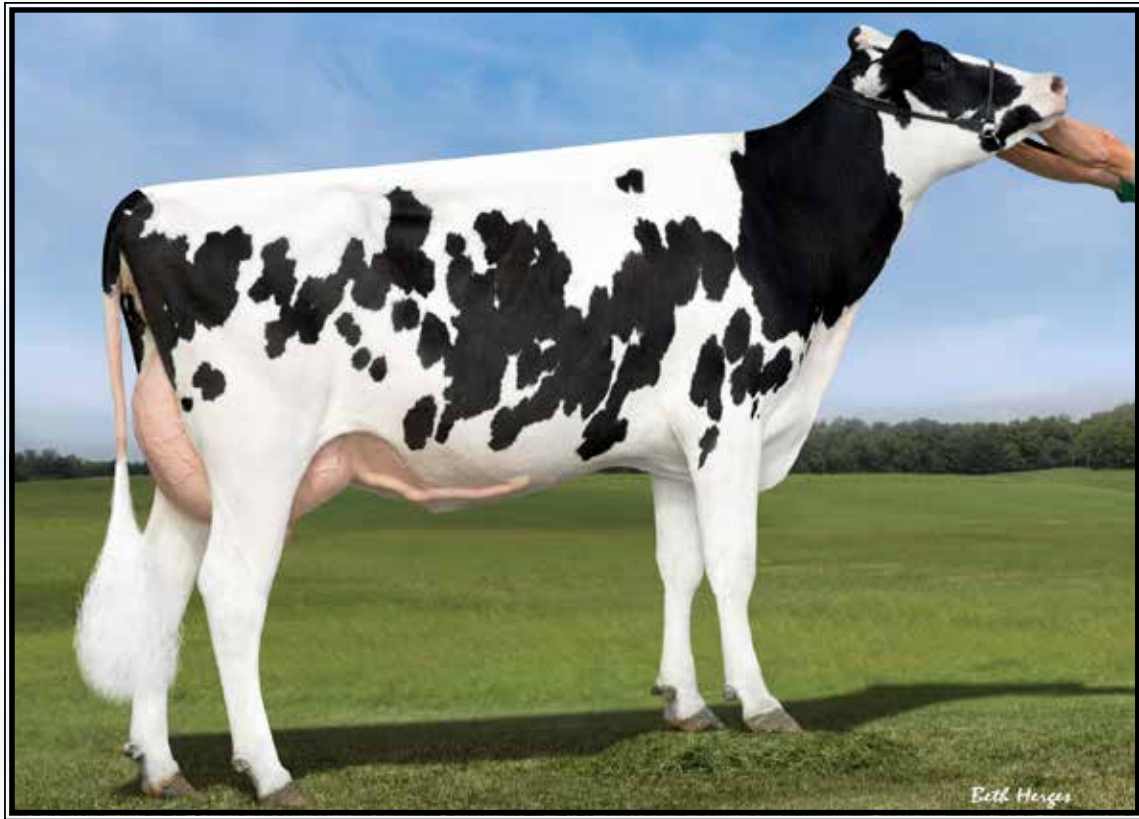
VG-85 VVV+V

3-01 305 29340 3.7 1075 3.3 982

4-05 305 32940 3.9 1301 3.3 1088

Han Hopman

Fun in the Sun ~ NY PICNIC STYLE



S-S-I Moonry Myesha 9071-ET VG-85 UUU+U @ 2-10 DOM

2-01 365 33260 4.0 1330 3.5 1152

(3rd Dam of Lot 33)

LOT 33

Melarry 1979-ET

3139887801 99%RHA-I
Born 4/20/19 6/19 PTA +2793GTPI
+987M +.13% +113F +.03% +70P
+985NM\$ +6.4PL +1.7DPR 2.70SCS
+1.24T +.94UDC +.75FLC
+237FE +1.8FI 7.4%SCE
+1009CMS

Melarry Farms

17011 Aspen Rd
Rice, MN 56367
320-267-3180

S-S-I PR Renegade-ET

3142352961 4/19 PTA +2878GTPI
+1690M +.14% +104F +.07% +73P
+963NM\$ +5.4PL +2.4DPR 2.72SCS
+2.09T +1.72UDC +1.71FLC 76%R
Jack X Millington

Pine-Tree 774 Frazz 7630-ET

3145982576 4/19 PTA +2679GTPI
+1917M +94F +61P +906NM\$ +7.2PL
+1.0DPR +1.21T +.75UDC +.94FLC
-Due September 15th, 2019
Sire: Melarry Josuper Frazzled-ET

2nd Dam:

Seagull-Bay My Octavia-ET
VG-85 VVV++

3rd Dam: (Pictured above)

S-S-I Moonry Myesha 9071-ET
VG-85 VVV+V DOM
2-01 365 33260 4.0 1330 3.5 1152

4th Dam:

S-S-I Bookem Modesto7269-ET
VG-87 VV+V DOM
3-03 305 25995 3.8 982 3.5 909

AI sons include: Mando & Marshman

5th Dam:

Roylane Shot Mindy 2079-ET
VG-86 VVVVV DOM
2-02 365 34589 4.3 1489 3.3 1148
**Dam of 'Monarch' at Select!*

6th Dam:

Seagull-Bay Oman Mirror-ET
VG-86 +VVVV DOM
3-00 365 36430 4.4 1606 3.6 1304
***Dam of sires: Robust, Bob & Punch**

7th Dam:

Seagull-Bay Manat Mirage-ET
EX-90 VEVVE GMD-DOM
3-06 365 35900 3.8 1364 3.4 1229

8th Dam:

Lynmead Celsius Minnow-ET *TV
EX-91,2E EEEVV GMD-DOM
4-10 365 49550 3.7 1857 3.2 1592
Lifetime 255910 3.7 9446 3.3 8481

9th Dam:

CMV Melwood Mindy-ET
VG-85 VE+V GMD-DOM
4-01 365 36341 3.6 1305 3.4 1239

10th Dam:

Briarpatch-R Misty-ET
VG-85 +E+V GMD-DOM
2-02 365 24680 4.8 1176 3.1 776

11th Dam: Rilara Mars Las Ravena

EX-91 EVEE GMD-DOM
4-03 305 29030 4.6 1329

Han Hopman

Fun in the Sun ~ NY PICNIC STYLE



**Ms Chassity Goldwyn Cash-ET
EX-91-CAN 94-MS**

2-04 365 39374 4.3 1700 3.3 1296
(4th Dam of Lot 34)

LOT 34

Westcoast Discjky CB6391 8410

13319192C 99%RHA-I
Born 3/1/19 5/19 PTA +2832GTPI
+993M +.19% +91F +.09% +56P
+903NMS +6.6PL +2.5DPR 2.59SCS
+2.30T +2.84UDC +1.26FLC
+188FE +2.7FI 2.59SCS
+954CMS

**“FREE trucking to Fradon Farms,
Ontario to the new buyer”**

Westcoast Holsteins

c/o Darren Kooyman

47749 Prairie Central Rd

Chilliwack, BC V2P 6H3 CANADA

Darren 604-799-6376

Claynook Discjockey-ET

12731113C 4/19 PTA +2838GTPI
+905M +.17% +82F +.07% +46P
+851NMS +6.4PL +2.5DPR 2.62SCS
+3.35T +3.90UDC +1.58FLC 75%R
Fortune X VG-86 Monterey

Westcoast Jedi Cashbrk 4416-ET

12461482C 4/19 PTA +2703GTPI
+1577M +61F +74P +811NMS +6.7PL
+2.4DPR +1.76T +1.68UDC +1.34FLC
-Died as heifer
Sire: S-S-I Montross Jedi-ET

2nd Dam:

**Morsan Commander Cash Brk 2533
VG-88-CAN**

1-11 365 28036 4.0 1133 3.5 981

3rd Dam:

**Morsan Mascalese Cash Break
GP-81-CAN**

1-10 323 21651 3.9 838 3.4 732

4th Dam: (Pictured above)

**Ms Chassity Goldwyn Cash-ET
EX-91-CAN 94-MS**

2-04 365 39374 4.3 1700 3.3 1296
Lifetime 116855 4.7 5469 3.5 4116

5th Dam:

**Regancrest S Chassity-ET
EX-92 EEEVE GMD-DOM**

3-10 365 42280 4.3 1798 2.7 1150
Lifetime 105520 4.2 4383 3.0 3158

**Global Cow of the Year 2011*

**Sold for \$1,500,000 in package*

**Dam of AI sires Gold Chip & Colt 45*

6th Dam: Regancrest Cinderella

EX-92,2E EEEEE GMD-DOM

5-00 365 34220 4.1 1418 3.1 1074

**1st Sr 2yr-old Mid-E Fall Nat'l 2006*

7th Dam:

Regancrest-PR Barbie-ET

EX-92 EEEEE 94-MS GMD-DOM

2-06 365 31690 3.9 1237 3.3 1050

**HM All-American Jr 3yr-old 2004*

8th Dam: Regancrest Juror Brina-ET

EX-92 EEEVE GMD

4-04 365 40640 3.6 1478 2.8 1140

**Res. Grand Champion Iowa State Fair*

9th Dam: Regancrest Aerostar Bert-ET

EX-90 EEEVV GMD-DOM

5-02 365 37790 3.6 1357 3.2 1215

Lifetime 109350 3.7 4031 3.3 3558

10th Dam: EX-91,2E VEEE GMD-DOM

7-09 365 33830 3.8 1276 3.1 1052

Lifetime 140130 4.1 5711 3.3 4616

11th Dam: EX-90 VEVE

12th Dam: VG-86 EX-MS

Han Hopman

Fun in the Sun ~ NY PICNIC STYLE

LOT 35

Aardema Kenobi 44163-ET

3151564567 99%RHA-I
Born 2/21/19 5/19 PTA +2827GTPI
+1672M +.13% +101F +.08% +73P
+994NMS\$ +7.8PL +1.8DPR 2.82SCS
+1.23T +1.91UDC +.82FLC
+239FE +2.4FI 6.7%SCE
+1035CMS\$

A2A2

Twin-Ridge Genetics

305 S County Line Rd
Jerome, ID 83338
Ashley 815-370-8713

De-Su 14222 Kenobi-ET

3141559616 4/19 PTA +2813GTPI
+1747M +.07% +84F +.08% +77P
+924NMS\$ +6.6PL +1.9DPR 2.77SCS
+1.87T +2.34UDC +.19FLC 78%R
Jedi X VG-85 Spring

Aardema Rubicon 35487

3144178565 4/19 PTA +2781GTPI
+1444M +107F +64P +968NMS\$ +7.2PL
+1.0DPR +1.40T +1.46UDC +1.36FLC
-Died as heifer
Sire: EDG Rubicon-ET

2nd Dam:

Aardema Josuper 22122

1-09 294 29160 3.8 1104 3.3 964
2-08 282 22180 4.2 925 3.5 784

Han Hopman

Fun in the Sun ~ NY PICNIC STYLE



Mercedes Delta 9619-ET
(2nd Dam of Lot 36)

LOT 36

Westcoast Challenger Jam 8247

13319029C 99%RHA-I
Born 1/20/19 4/19 PTA +2821GTPI
+1244M +.18% +98F +.06% +55P
+964NMS\$ +7.6PL +2.0DPR 2.71SCS
+2.10T +2.69UDC +1.05FLC
+217FE +2.4FI 7.6%SCE
+998CMS\$

A2A2

*Soon ready to IVF

**“FREE trucking to Fradon Farms,
Ontario to the new buyer”**

Westcoast Holsteins

c/o Darren Kooyman

47749 Prairie Central Rd
Chilliwack, BC V2P 6H3 CANADA
Darren 604-799-6376

Sandy-Valley Challenger-ET

3140616169 4/19 PTA +2826GTPI
+1259M +.20% +103F +.04% +51P
+969NMS\$ +7.6PL +2.3DPR 2.69SCS
+2.24T +3.04UDC +.46FLC 76%R
Superhero X X Silver

Mercedes Frazzle Jam 11-ET

3145066599 4/19 PTA +2756GTPI
+1284M +109F +57P +941NMS\$ +6.6PL
+2.2DPR +1.96T +2.23UDC +1.58FLC
-Due August 29th, 2019
Sire: Melarry Josuper Frazzled-ET

2nd Dam: (Pictured above)
Mercedes Delta 9619-ET

3rd Dam:
T-Spruce Lgold 7871-ET GP-83
3-08 305 27640 4.5 1255 3.8 1037

4th Dam:
Coyne-Farms Fbook Jaela
VG-85 VVVV+
2-00 305 26800 4.0 1073 3.5 944

5th Dam:
Coyne-Farm Freddie Jill-ET *TL
VG-85 ++GVV
2-00 365 33860 3.3 1125 3.1 1048

FULL sister:
Coyne-Farms Freddi Jeven-ET VG-85
*Sold for \$33,700 at Legends Fall Sale

3rd Dam:
Coyne-Farms Ramos Jelly*TY
VG-85 VV+V+ DOM
2-02 365 32120 4.1 1332 3.2 1025
*Gr'Dam of 'Jacey' & 'Johnson'

4th Dam:
Coyne-Farms Shottle Jam-ET
VG-88, VG-MS
3-00 365 35750 3.0 1080 3.1 1104

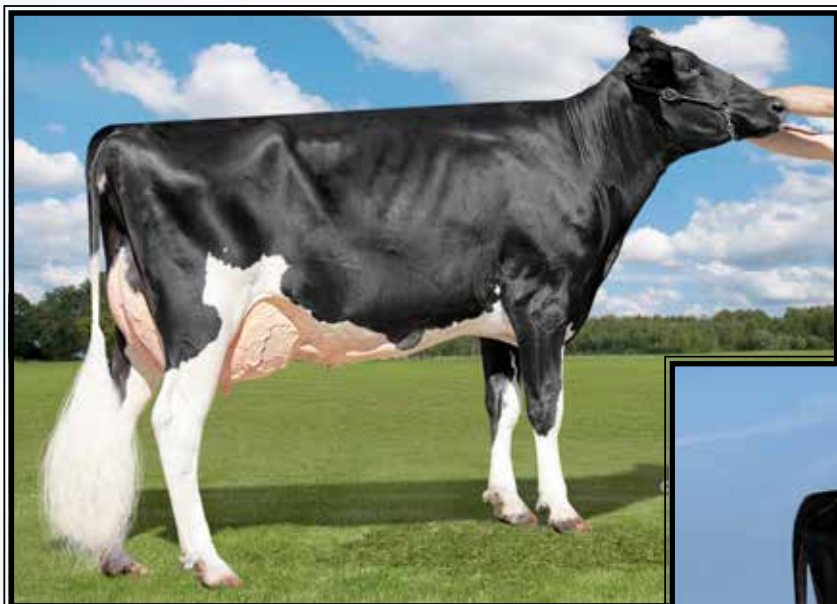
5th Dam:
Coyne-Farms Bestow Jell EX-90,2E
5-07 365 39980 3.8 1522 3.0 1219
Lifetime 170970 3.4 5733 3.3 5587

6th Dam:
Coyne-Farms Wade Jelly VG-87
3-04 365 37710 4.0 1512 2.8 1056
Lifetime 183960 3.7 6738 3.0 5543

7th Dam:
Coyne-Farms Skybuck Jello
VG-86, VG-MS
4-08 365 27770 4.5 1258 3.3 916

Han Hopman

Fun in the Sun ~ NY PICNIC STYLE



**Cookiecutter Ssire Has-ET
VG-88 EE++E DOM**

2-01 365 38700 4.5 1740 3.4 1325
(2nd Dam of Lots 37 & 38)



**AOT Modesty Hoss-ET
GP-83 +U+++
(Dam of Lots 37 & 38)**

LOT 37

Pine-Tree 12922 Leg 8323-ET

3150675395 99%RHA-I
Born 3/27/19 5/19 PTA +2827GTPI
+887M +.21% +91F +.09% +52P
+984NMS\$ +8.0PL +3.3DPR 2.50SCS
+1.28T +1.73UDC +1.24FLC
+205FE +3.8FI 6.3%SCE +1034CMS\$
+152RZG +1104DWPS

LOT 38

Pine-Tree 12922 Leg 8306-ET

3150675378 99%RHA-I
Born 3/5/19 5/19 PTA +2793GTPI
+1280M +.17% +97F +.05% +53P
+996NMS\$ +8.0PL +2.8DPR 2.76SCS
+1.17T +1.93UDC +.81FLC
+217FE +3.3FI 6.7%SCE +1025CMS\$
+157RZG +1106DWPS

*Dam and sire of Lots 37 & 38 are tested as A2A2

Pine-Tree Dairy

8586 Benner Rd
Marshallville, OH 44645
330-466-8916

Pine-Tree CW Legacy-ET

3142332722 4/19 PTA +2914GTPI
+1425M +.19% +107F +.07% +63P
+1084NMS\$ +8.6PL +2.2DPR 2.46SCS
+1.21T +1.90UDC +.73FLC 75%R
Frazzled X GP-83 Yoder

AOT Modesty Hoss-ET

2-05 GP-83 +V+++ 3135331929
4/19 PTA +2639GTPI +982M +103F
+51P +853NMS\$ +5.3PL +.5DPR
+2.07T +1.94UDC +.97FLC
2-00 117 11485 4.5 520 3.1 357 RIP
Last test- 104 lbs 4.2%F 3.4%P
Sire: Bacon-Hill Pety Modesty-ET
(Pictured above)
Hoss is the Dam of:
Pine-Tree Heroic @ ABS
4/19 PTA +2963GTPI +1149NMS\$
+137F +2.37UDC +1189CMS 2.4%DCE

**2nd Dam: (Pictured above)
Cookiecutter Ssire Has-ET
VG-88 EE++E DOM**

2-01 365 38700 4.5 1740 3.4 1325
3-11 365 43860 4.0 1747 3.4 1485
Lifetime 105510 4.4 4638 3.5 3676
*9th generation EX mammary!

3rd Dam:

**Cookiecutter Mom Halo-ET
2-09 VG-88 VV+VE DOM**

2-00 365 35280 5.2 1819 3.7 1304
*Tremendous genomic transmitter!

4th Dam:

**Cookiecutter Gld Holler-ET
VG-88 VVV+E DOM**

2-03 365 40730 3.5 1410 3.1 1249
*Nom. Int'l Cow of the Year 2016

5th Dam:

**Ms Kings-Rnsm Champ Haley-ET
EX-90 EEVEE GMD-DOM**

3-11 365 43690 3.7 1625 3.1 1357

6th Dam:

**Regancrest-JDV Hanna-ET
EX-90 EEVVE**

4-07 365 45110 4.3 1922 3.2 1449

7th Dam:

**Long-Haven Rudolph Dee-ET
EX-90,2E EVVEE GMD-DOM**

2-11 365 32720 4.8 1565 3.8 1252
Lifetime 166900 4.3 7099 3.5 5884

**8th Dam: Regancrest Elton Disrael-ET
VG-88 EX-MS DOM**

2-04 365 33617 4.5 1499 3.5 1169

Full brother: 7HO5157 Durham

**9th Dam: Snow-N Denises Della
EX-95,2E EEEEE GMD-DOM**

6-00 365 35230 4.0 1425 3.0 1049
Lifetime 180240 3.9 7108 3.2 5723

*Dam of sires 'Durham' & 'Dundee'

**10th Dam: Snow-N Dorys Denise
EX-90,2E EX-MS GMD-DOM**

5-09 365 33350 3.8 1256 3.1 1038
Lifetime 114010 3.6 4153 3.2 3649

Fun in the Sun ~ NY PICNIC STYLE



Richmond-FD La Sausalito-ET VG-85 +UG+U

1-10 322 28400 3.8 1078 3.1 885

(2nd Dam of Lot 39)

LOT 39

Elm-J Rolan 13056-ET

320542826 99%RHA-I

Born 2/3/19 5/19 PTA +2797GTPI

+1296M +.14% +88F +.05% +55P

+957NMS +7.8PL +.2DPR 2.83SCS

+2.27T +3.27UDC +1.99FLC

+206FE +.9FI 6.4%SCC

+987CMS

Edward Jasurda

N7822 Murphy Lake Rd

Phillips, WI 54555

715-820-0401

Progenesis Modest Rolan512-ET

12529277C 4/19 PTA +2663GTPI

+977M +.23% +100F +.06% +46P

+882NMS +6.2PL +.2DPR 2.93SCS

+1.80T +2.30UDC +1.59FLC 78%R

Modesty X GP-80 Bombero

Richmond-FD Minneapolis-ET

2-09 GP-84 VVV++ 3137593840

4/19 PTA +2674GTPI +2007M +76F

+75P +833NMS +5.2PL +.2DPR

+1.71T +2.01UDC +1.29FLC

2-01 278 27211 3.7 1085 3.4 936 RIP

Last test- 109 lbs 3.9%F 3.6%P

Sire: Wet Tuffennuff Magnus-ET

**2nd Dam: (Pictured above)
Richmond-FD La Sausalito-ET
VG-85 +VG+V**

1-10 322 28400 3.8 1078 3.3 938

2-10 302 27540 3.6 998 3.4 927

Sire: Spruce-Haven Stoic-ET

**3rd Dam:
Richmond-FD Los Angeles-ET**

GP-80 G+G++

3-06 305 23928 4.1 987 3.0 725

Sire: Morningview Levi-ET

**4th Dam:
Richmond-FD D Juneau-ET *TY**

VG-87 +V++E DOM

3-10 365 43440 3.8 1669 3.2 1404

5-06 365 38920 3.8 1474 3.3 1265

Lifetime 144780 4.1 5865 3.4 4916

Sire: Ked Outside Jeeves-ET

**5th Dam:
Richmond-FD Dakota-ET *TV**

VG-85 VV+++

2-07 365 35230 3.5 1241 2.9 1039

3-09 365 35630 3.7 1312 2.9 1044

6th Dam: Richmond-FD M-Star Montana

VG-87 VEVVV DOM

2-03 365 39270 3.5 1366 2.9 1151

Lifetime 199030 3.3 6649 3.0 5993

7th Dam: Richmond-FD H Star Marcella

GP-84 EEV++

5-00 365 32130 3.1 1010 2.9 938

Lifetime 122730 3.2 3918 3.0 3739

8th Dam: Charich Eden High Star

VG-85 +V+VV

3-03 365 28820 3.5 1008 2.9 850

Lifetime 122480 3.5 4246 3.0 3638

9th Dam: Charich Neth Star Eden

VG-87 +EV+V GMD-DOM

6-02 311 33840 4.3 1457 3.0 1017

Lifetime 185620 4.0 7426 3.1 5824

10th Dam: Charich C Star Beth-ET

VG-88 VEEVV DOM

9-09 365 31550 3.9 1225 3.0 936

Lifetime 244930 3.8 9332 3.0 7425

Han Hopman

Fun in the Sun ~ NY PICNIC STYLE



North-Echo Planet 1907-ET VG-86 UU++U DOM

4-07 305 39570 4.4 1760 3.7 1453

(4th Dam of Lot 40)

LOT 40

Zimmerview Seamus Karat-ET

03204272489 99%RHA-I
 Born 1/22/19 5/19 PTA +2816GTPI
 +1703M +.07% +84F +.01% +56P
 +949NMS +8.8PL +2.7DPR 2.72SCS
 +1.95T +2.13UDC +2.18FLC
 +186FE +3.1FI 6.9%SCE
 +963CMS

#2 GTPI Seamus daughter

*Ready to IVF soon

Zimmerview Dairy

700 Zimmer Rd
 Marietta, OH 45750
 740-374-7299

S-S-I La Syracuse Seamus-ET

3136176225 4/19 PTA +2735GTPI
 +1817M +.07% +89F +.01% +57P
 +866NMS +7.1PL +3.3DPR 2.65SCS
 +2.32T +2.37UDC +1.54FLC 76%R
 Syracuse X VG-86 Josuper

Zimmerview Modesty Kore-ET

3140284621 4/19 PTA +2699GTPI
 +1492M +64F +51P +870NMS +8.2PL
 +3.8DPR +1.31T +1.72UDC +2.12FLC
 -Died at calving
 Sire: Bacon-Hill Pety Modesty-ET

2nd Dam:

Zimmerview Montrss Kelly-ET
GP-82 +VV++
 2-02 274 30040 3.7 1098 3.5 1059

3rd Dam:

S-S-I Robust Keyes 7260-ET
GP-83 +VFV+ DOM
 1-11 305 23160 4.7 1078 3.7 865

4th Dam: (Pictured above)

North-Echo Planet 1907-ET
VG-86 VV++V DOM
 4-07 305 39570 4.4 1760 3.7 1453
 Lifetime 132620 4.1 5500 3.5 4704

5th Dam:

North-Fork Lynch Dina-ET
EX-91,2E EEVVE DOM
 4-07 365 36440 3.8 1382 3.2 1180
 Lifetime 128850 4.0 5092 3.4 4362

6th Dam:

Kings-Ransom DB Digital-ET
EX-92,2E EEEVE GMD-DOM
 4-04 365 40020 4.1 1651 3.2 1237
 Lifetime 112410 4.3 4846 3.3 3688

7th Dam:

Pen-Col Mtoto Dima-ET
VG-88 EEVVV GMD-DOM
 7-02 365 45430 3.8 1723 3.1 1411
 Lifetime 193470 3.9 7523 3.0 5880

8th Dam:

Pen-Col Commotion Deanna
EX-91,2E VEEEE GMD-DOM
 5-00 365 36060 4.8 1730 3.2 1167
 Lifetime 105370 4.6 4890 3.4 3635

9th Dam:

Pen-Col Mascot Deanna-ET
EX-91 VEEVE GMD-DOM
 5-01 365 33920 3.7 1252 3.6 1210

10th thru 15th Dams all VG or EX

Han Hopman

Fun in the Sun ~ NY PICNIC STYLE



Ms America Dixie-ET VG-85 VVV++ DOM
(3rd Dam of Lot 41)

LOT 41

Aardema Amazon 44200-ET

3151564604 99%RHA-I
Born 3/12/19 6/19 PTA +2810GTPI
+1439M +.18% +106F +.06% +62P
+973NMS +6.3PL +.6DPR 2.70SCS
+1.90T +2.30UDC +1.46FLC
+235FE +.8FI 6.2%SCE
+1010CMS

A2A2

Twin-Ridge Genetics

305 S County Line Rd
Jerome, ID 83338
Ashley 815-370-8713

Seagull-Bay Amazon-ET

3137661386 4/19 PTA +2788GTPI
+1711M +.15% +107F +.06% +68P
+961NMS +5.8PL +.5DPR 2.80SCS
+1.68T +2.15UDC +1.50FLC 76%R
Achiever X VG-86 Stoic

Aardema Charley 31393-ET

3139798790 4/19 PTA +2694GTPI
+1541M +90F +60P +866NMS +6.1PL
+1.1DPR +1.54T +1.53UDC +1.28FLC
2-00 41 2950 4.3 128 3.5 104 RIP
Proj. 305ME 27700 4.1 1138 3.3 915
Sire: DG Charley

2nd Dam:

T-Gen-AC Dixie Ring-ET
GP-81 G+F++

3rd Dam: (Pictured above)

Ms America Dixie-ET
VG-85 VVV++ DOM

4th Dam:

Seagull-Bay Miss America-ET
VG-87 VVVV DOM PTA +2462G
2-03 365 31750 4.3 1368 3.5 1120
**FULL sister to Supersire +2697G!*

5th Dam:

Ammon-Peachey Shauna-ET
EX-91 EEEVE GMD-DOM
1-11 365 31210 4.2 1305 3.1 1145

**Global Cow of the Year 2015*
-AI sons include: Supersire & Headliner,

6th Dam: Pine-Tree Martha Sheen-ET

VG-86 VV+VV DOM

1-11 365 31210 4.2 1305 3.1 968

7th Dam: Pine-Tree Missy Martha-ET

VG-86 VVV+V DOM

2-02 365 34730 3.6 1266 3.1 1070

8th Dam: Wesswood-HC Rudy Missy-ET

EX-92,3E EEEEE GMD-DOM

4-11 365 40880 4.1 1665 3.4 1385

Lifetime 119610 4.1 4885 3.4 4031

**Global Cow of the Year 2014*

9th Dam: Wesswood Elton Mimi

EX-90 EEEEE GMD-DOM

3-05 365 35380 3.3 1160 3.0 1054

10th Dam: Wesswood Mandingo Ivy

VG-87 VEEVV

6-05 365 36330 3.6 1305 2.8 1018

Lifetime 144060 3.4 4933 2.9 4139

11th Dam: Wesswood Astro Matt Ester

VG-87 VEVV GMD-DOM

Lifetime 140110 3.6 5029 3.0 4158

12th Dam: Wesswood Bell Claudette

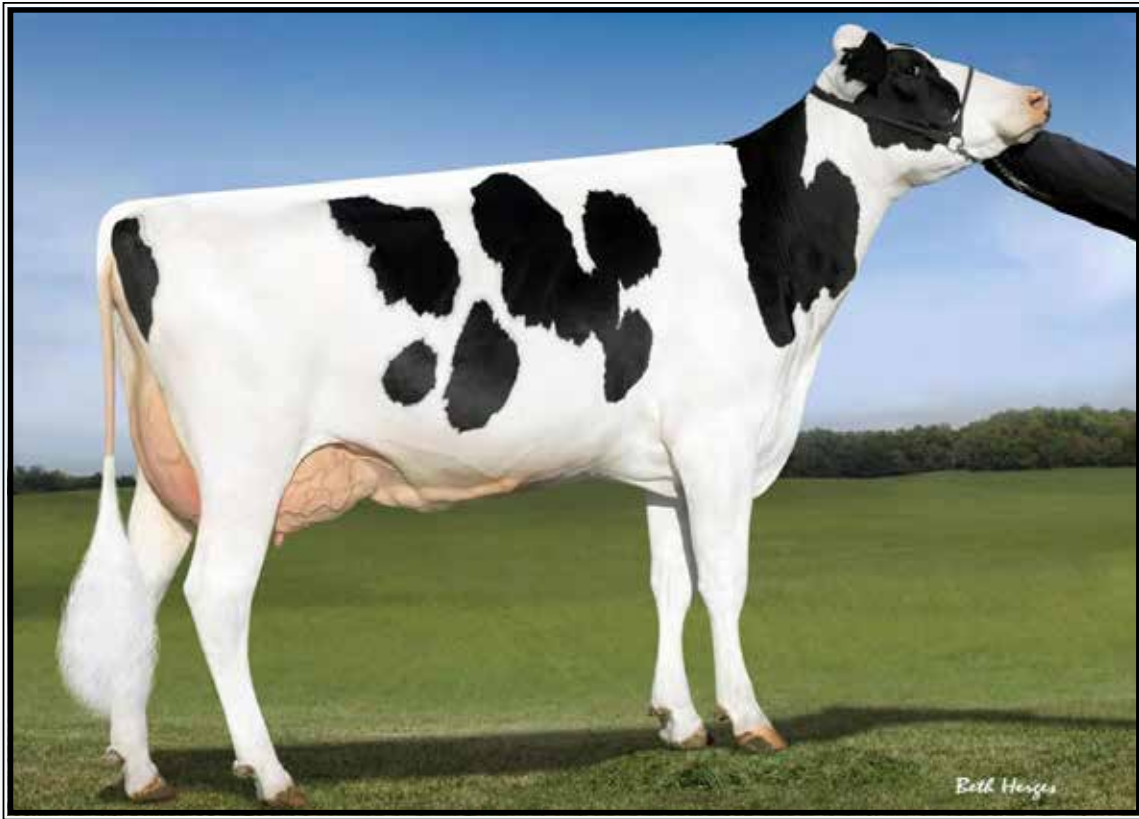
VG-87 GMD-DOM

8-04 365 38150 3.8 1443 2.8 1064

Lifetime 280980 3.6 9997 2.9 8092

Han Hopman

Fun in the Sun ~ *NY PICNIC STYLE*



OCD Supersire 9882-ET VG-86 UU++V DOM

2-01 365 31870 4.1 1310 3.4 1083

(3rd Dam of Lot 42)

LOT 42

Westcoast Discjky Far6334 8486

13319268C 99%RHA-I HH5
Born 3/18/19 5/19 PTA +2826GTPI
+2130M +.03% +88F +.03% +75P
+889NMS +5.7PL +.8DPR 2.87SCS
+2.62T +2.82UDC +1.32FLC
+212FE +1.6FI 8.1%SCE
+910CMS

“FREE trucking to Fradon Farms,
Ontario to the new buyer”

Westcoast Holsteins

c/o Darren Kooyman

47749 Prairie Central Rd

Chilliwack, BC V2P 6H3 CANADA

Darren 604-799-6376

Claynook Discjockey-ET

12731113C 4/19 PTA +2838GTPI
+905M +.17% +82F +.07% +46P
+851NMS +6.4PL +2.5DPR 2.62SCS
+3.35T +3.90UDC +1.58FLC 75%R
Fortune X VG-86 Monterey

Westcoast Bourbon Faria 6334

12843501C 4/19 PTA +2668GTPI
+2222M +65F +78P +771NMS +5.1PL
+1.4DPR +2.07T +2.05UDC +.50FLC
-Due October 21st, 2019
Sire: Wa-Del ABS Bourbon-ET

2nd Dam:

Pine-Tree Jedi 9882Faria-ET

3rd Dam: (Pictured above)

OCD Supersire 9882-ET

VG-86 VV++V DOM

2-01 365 31870 4.1 1310 3.4 1083

*Multiple active AI sons

*Sold for \$270,000 in World Classic 2016

4th Dam: OCD Robust Shimmer-ET

EX-90 EEVVE DOM

2-03 365 34350 3.5 1200 3.2 1086

5th Dam: Ammon-Peachey Shana-ET

VG-87-CAN as 2yr-old DOM

2-02 365 34191 4.8 1653 3.4 1164

FULL sister: Ammon-Peachey Shauna EX-91

-dam of Supersire, Headliner, etc.

6th Dam: Pine-Tree Martha Sheen-ET

VG-86 VV+V DOM

1-11 365 31210 4.2 1305 3.1 968

7th Dam: Pine-Tree Missy Martha-ET

VG-86 VVV+V DOM

2-02 365 34730 3.6 1266 3.1 1070

8th Dam:

Wesswood-HC Rudy Missy-ET

EX-92,3E EEEEE GMD-DOM

4-11 365 40880 4.1 1665 3.4 1385

Lifetime 119610 4.1 4885 3.4 4031

*Global Cow of the Year 2014

9th Dam: Wesswood Elton Mimi

EX-90 EEEEE GMD-DOM

3-05 365 35380 3.3 1160 3.0 1054

10th Dam: Wesswood Mandingo Ivy

VG-87 VEEVV

6-05 365 36330 3.6 1305 2.8 1018

Lifetime 144060 3.4 4933 2.9 4139

11th Dam: Wesswood Astro Matt Ester

VG-87 VEVV GMD-DOM

6-08 365 31860 3.5 1125 2.9 921

Lifetime 140110 3.6 5029 3.0 4158

12th Dam: Wesswood Bell Claudette

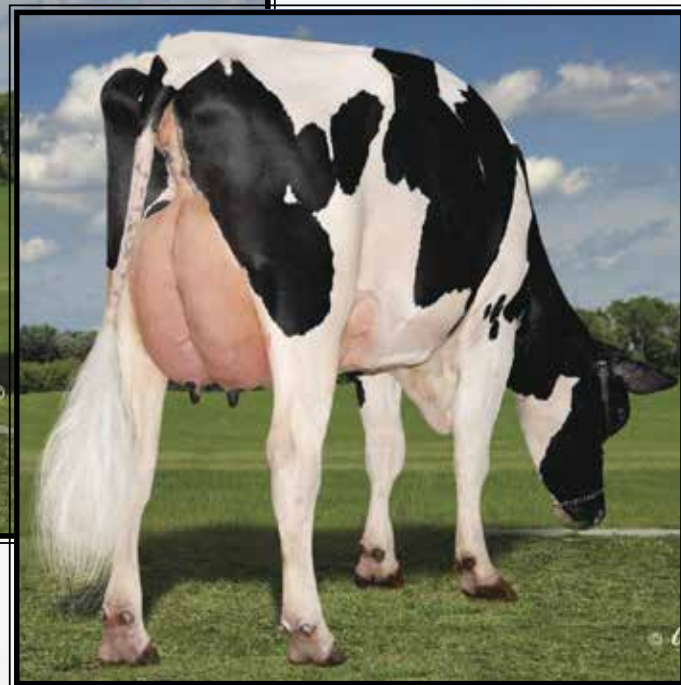
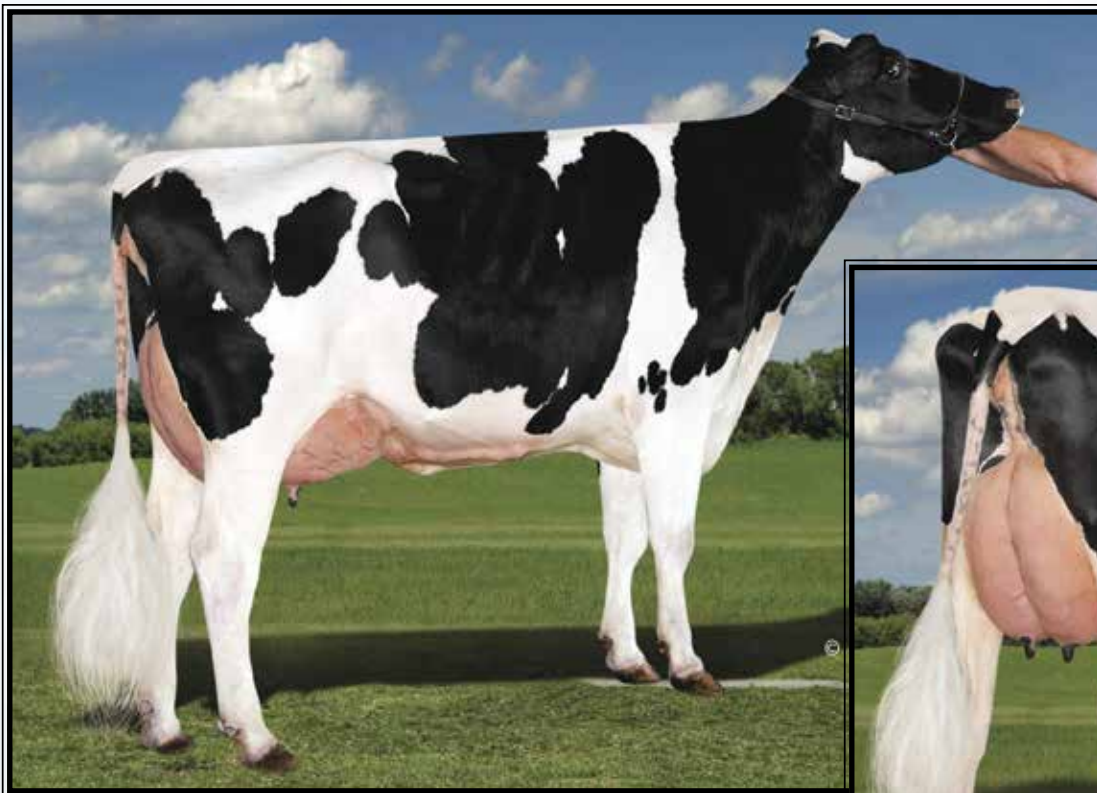
VG-87 GMD-DOM

8-04 365 38150 3.8 1443 2.8 1064

Lifetime 280980 3.6 9997 2.9 8092

Han Hopman

Fun in the Sun ~ NY PICNIC STYLE



Cookicutter Supr Hazajo-ET
VG-87 UUUUU
 (Dam of Lots 28 & 43)

LOT 43 #6145

Cookicutter Heirdom-ET

3149941689 99%RHA-I
 Born 10/16/18 4/19 PTA +2806GTPI
 +2194M +.07% +101F +.03% +75P
 +907NMS +5.6PL +.5DPR 2.94SCS
 +2.43T +2.54UDC +1.05FLC
 +223FE +1.2FI 7.6%SCE
 +924CMS

#2 GTPI & Protein Seaglass dtr.
 #1 Milk & Fat Seaglass dtr.

*Ready to IVF

Cookicutter Holsteins

239 Vaughn Road
 Hudson Falls, NY 12839
 518-858-6156

Ladys-Manor Bnd Seaglass-ET

3140650345 4/19 PTA +2632GTPI
 +1283M +.07% +67F +.05% +52P
 +744NMS +5.5PL +1.5DPR 2.80SCS
 +2.14T +2.69UDC +1.22FLC 78%R
 Bandares X VG-85 Supershot

Cookicutter Supr Hazajo-ET

3-03 VG-87 VVVVV 3134739117
 12/18 PTA +2916GTPI +2641M +101F
 +84P +915NMS +5.8PL +.3DPR +2.64T
 2-04 352 39660 3.4 1325 3.0 1170 RIP
 Sire: Uecker Supersire Josuper-ET
 (Pictured above)

#3 CTPI cow of the breed!

*Potential 11 generation EX-MS

2nd Dam: **Cookicutter MN Hazelle-ET**
VG-89 VEVVE DOM
 2-06 332 31260 3.8 1173 3.3 1038
 3-04 305 42640 3.6 1543 3.2 1381

Mat. brothers include:

Hodedoe +2700G & Humblenkind +2712G

3rd Dam: (Pictured w/ Lot 21)

Cookicutter Epic Hazel-ET
EX-92,2E EEVVE DOM
 5-10 350 38080 4.3 1635 3.6 1354
 Lifetime 159030 4.3 6874 3.6 5725

*9th generation EX-MS

*Dam of 29H17747 Harper

#1 Germany & #7 US proven list

4th Dam: **Cookicutter Mom Halo-ET**

2-09 VG-88 VV+VE DOM
 2-00 365 35280 5.2 1819 3.7 1304
 *#3 Int'l Global Cow of the Year 2018

5th Dam: **Cookicutter Gld Holler-ET**
VG-88 VVV+E DOM

2-03 365 40730 3.5 1410 3.1 1249
 *Nom. Int'l Cow of the Year 2016

6th Dam:

Ms Kings-Rnsm Champ Haley-ET
EX-90 EEVVE GMD-DOM
 3-11 365 43690 3.7 1625 3.1 1357

7th Dam: **Regancrest-JDV Hanna-ET**
EX-90 EEVVE
 4-07 365 45110 4.3 1922 3.2 1449

8th Dam: **Long-Haven Rudolph Dee-ET**
EX-90,2E EVVEE GMD-DOM
 2-11 365 32720 4.8 1565 3.8 1252
 Lifetime 166900 4.3 7099 3.5 5884

9th Dam: **Regancrest Elton Disrael-ET**
VG-88 EX-MS DOM

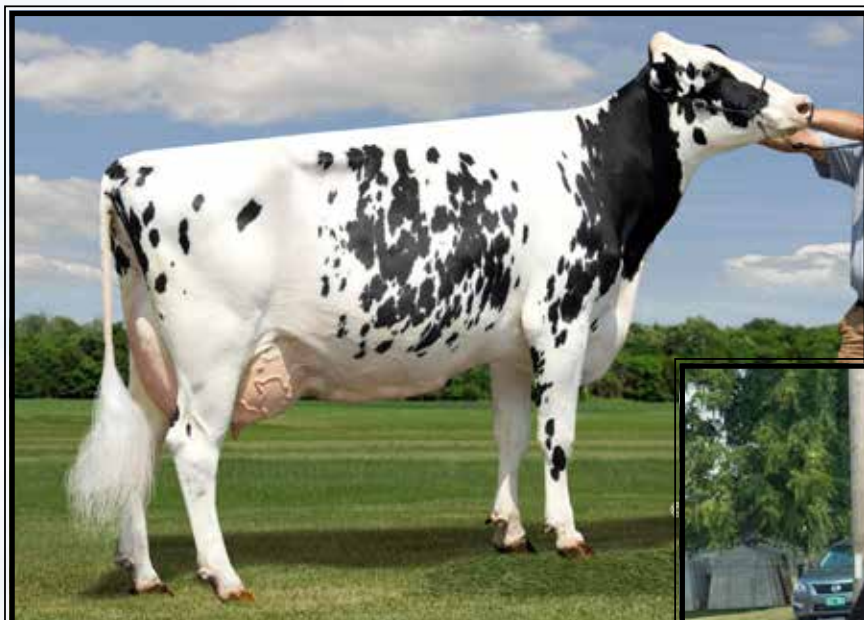
2-04 365 33617 4.5 1499 3.5 1169
Full bro: Regancrest Elton Durham-ET

10th Dam: **Snow-N Denises Dellia**
EX-95,2E EEEEE GMD-DOM
 6-00 365 35230 4.0 1425 3.0 1049
 Lifetime 180240 3.9 7108 3.2 5723

11th Dam: **Snow-N Dorys Denise**
EX-90,2E EX-MS GMD-DOM
 5-09 365 33350 3.8 1256 3.1 1038

Han Hopman

Fun in the Sun ~ NY PICNIC STYLE



**Cookiecutter SH Hazel-ET
EX-92,2E EEEEE**

LTD 176421 3.8 6703 3.3 5822
(2nd Dam of Lot 44)



**Cook-Farm Domn Hazie-ET
EX-95 EEEEE**

4-11 365 35210 3.3 1152 3.3 1162
(Dam of Lot 44)

LOT 44 Embryos

*Selling 6-#1 IVF DT female embryos
sired by Doorman

*All resulting calves will be potential
9th generation EX!

*Same family as popular AI brood cow:
Cook-Farm MOM Halo-ET VG-88

*Embryos at Transova, MD

Richard Denier-NDIRA, Inc.
1070 W Century Drive
Louisville, CO 80027
831-238-0102

Val-Bisson Doorman-ET

107281711C 4/19 PTA +2301GTPI
+26M +.13% +37F +.09% +26P +2.2PL
2.54SCS +3.51T +2.62UDC +1.76FLC
Bookem X EX-94 Shottle

Cook-Farm Domn Hazie-ET

5-06 EX-95 EEEEE 69775153
2-01 324 24330 3.2 727 3.3 750
3-00 226 15120 3.6 537 3.8 570
3-11 315 27250 3.7 1008 3.3 898
4-11 365 35210 3.3 1152 3.3 1162

Sire: Ronelee Toystory Domain
(Pictured above)

*Sold for \$20,300 at 2016 Nat'l Conv.

**2nd Dam: (Pictured above)
Cookiecutter SH Hazel-ET
EX-92,2E EEEEE**

2-00 365 27960 3.6 1008 3.2 898
3-07 365 37310 4.1 1518 3.4 1270
5-09 365 38050 3.9 1499 3.1 1181
7-07 365 34490 3.7 1265 3.2 1092
Lifetime 187150 3.9 7207 3.3 6226

3rd Dam:

**Ms Kings-Rnsm Champ Haley-ET
EX-90 EEVVE GMD-DOM**

2-06 365 33190 4.7 1545 3.1 1045
3-11 365 43690 3.7 1625 3.1 1357

4th Dam:

**Regancrest-JDV Hanna-ET
EX-90 EEVVE**

4-07 365 45110 4.3 1922 3.2 1449

5th Dam:

**Long-Haven Rudolph Dee-ET
EX-90,2E EVVVE GMD-DOM**

2-11 365 32720 4.8 1565 3.8 1252
Lifetime 166900 4.3 7099 3.5 5884

6th Dam:

**Regancrest Elton Disrael-ET
VG-88 EX-MS DOM**

2-04 365 33617 4.5 1499 3.5 1169
Full brother: 7HO5157 Durham

7th Dam:

**Snow-N Denises Dellia
EX-95,2E EEEEE GMD-DOM**

6-00 365 35230 4.0 1425 3.0 1049
Lifetime 180240 3.9 7108 3.2 5723

*Dam of sires 'Durham' & 'Dundee'

8th Dam:

**Snow-N Dorys Denise
EX-90,2E EX-MS GMD-DOM**

5-09 365 33350 3.8 1256 3.1 1038
Lifetime 114010 3.6 4153 3.2 3649

Han Hopman

Fun in the Sun ~ NY PICNIC STYLE



Donnanview Damion Lyza-ET EX-94,2E EEEEE

**Nom. All-American & Nom. All-Canadian Sr 3yr-old 2011*

(Dam of Lots 45A & 45B)

LOT 45A Embryos

*Selling 6-#1 IVF DT female embryos
sired by Goldwyn

Richard Denier-NDIRA, Inc.
1070 W Century Drive
Louisville, CO 80027
831-238-0102

LOT 45B Embryos

*Selling 6-#1 IVF female embryos
sired by Goldwyn

*Embryos are at Transova, MD

Braedale Goldwyn-ET

10705608C 4/19 PTA +1868GTPI
+.09% +14F +.04% 2.74SCS
+1.74T +1.47UDC +1.37FLC 99%R
James X VG-86 Storm

Donnanview Damion Lyza-ET

7-04 EX-94,2E EEEEE 7954581C
2-00 280 19371 3.9 672 3.2 630
3-04 365 36538 3.9 1457 3.0 1120
6-05 305 29160 3.7 1072 3.0 887
Sire: Erbacres Damion

(Pictured above)

**Nom. All-Canadian Sr 3yr-old 2011*

**Nom. All-American Sr 3yr-old 2011*

**Nom. All-Quebec Sr 3yr-old 2011*

Full sisters:

Donnanview Damion Lyza 857

EX-91-CAN

6-01 365 33957 4.0 1356 3.2 1080

Donnanview Damion Lacey

EX-90-CAN

6-02 334 32685 3.6 1193 3.4 1096

2nd Dam:

Donnanview Integrity Lauralie
EX-90,2E-CAN

2-02 314 22802 3.9 886 3.1 701
3-03 365 29808 3.5 1058 3.2 952

3rd Dam:

Tailor Made Rudolph Liz-ET
EX-CAN

2-06 365 37842 3.2 1226 3.1 1186
3-09 296 37090 3.4 1274 3.1 1157

4th Dam:

Lexy-Lane Bellwd Lizzie-ET

5th Dam:

Lexy-Lane Thor Liza-ETS
VG-86 VVVEV

2-00 365 26050 4.0 1035 3.5 918

6th Dam:

Lexy-Lane Blackstar Lynn-ET
VG-85 +VV+V GMD-DOM

1-11 365 26810 4.3 1161 3.6 959

7th Dam:

Lexy-Lane Mark Paula
EX-90,2E EEEVE GMD-DOM

7-05 365 37350 3.9 1465 3.2 1190
Lifetime 111910 4.1 4613 3.3 3726

8th Dam:

Lexy-Lane Bell Pamela
VG-85 VV+V GMD-DOM

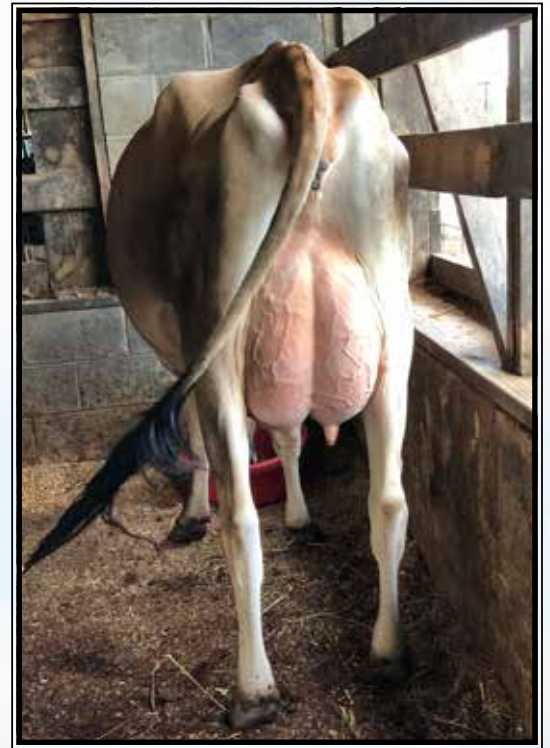
4-07 365 31060 3.8 1183 3.3 1010

Han Hopman

Fun in the Sun ~ NY PICNIC STYLE



Fermar Paramount Joy EX-95%
**Nom. All-Canadian Jr 3yr-old 2011*
 (3rd Dam of Lot J)



River Valley 1701 Chrome Josie-ET
UG-85%
 (Dam of Lot J)

LOT J

Outback Craze Jolie

3200656133 Eartag ID 637
 Born 4/20/19 100BBR JH1F
 6/19 PTA +189GJPI
 +482M +.22% +67F +.08% +34P
 +599NMS\$ +6.1PL +1.2DPR 2.84SCS
 +2.3T +29.6GJUI +1.5LIV
 +634CMS\$

A2/A2

**Possibly the most valuable pure Jersey to sell this year! +189GJPI and no JX makes her a breed leader!*

Ehrhardt Farms & Michael Heath

2730 Baldwin Mill Rd
 Baldwin, MD 21013
 443-375-8048

River Valley Circus Craze-ET

75341001 6/19 PTA +168GJPI +1.8T
 +789M +.09% +56F +.02% +33P
 +563NMS\$ +6.2PL +1.0DPR 2.89SCS
 Lemonhead X EX-90% Pharaoh

River Valley 1701 Chrome Josie-ET

2-02 VG-85% 3137871371
 6/19 PTA +153GJPI +2.0T +690M
 +60F +37P +504CMS\$ +3.8PL 2.92SCS
 2-1 60 4190 4.4 185 3.1 130 RIP
 Projected 305 18070M 829F 584P
 Sire: River Valley Cece Chrome
 (Pictured above)

2nd Dam:

Guimo Arrow Jackie-ET
EX-90%

2-01 305 17510 5.2 912 3.8 665
 3-07 305 19170 4.7 901 3.7 716

3rd Dam: (Pictured above)

Fermar Paramount Joy
EX-95%

3-01 305 21400 5.2 1116 4.1 873
 4-11 305 20860 5.1 1065 3.7 778

**Nom. All Canadian Jr 3yr-old 2011*
**ABA All-Am Production Cow 2014*
**1st Lifetime Production Cow 2014*
WDE & All Am Jersey Show (KY)
**4th Lifetime Production Cow 2015*
WDE & All-American Jersey Show
**Dam of Guimo Joel @ Semex*

4th Dam:

Early Rise First Prize Jessie
EX-92,8E-CAN

4-07 305 19861 4.9 966 3.8 744
 Lifetime 140710 4.8 6743 3.9 5430

5th Dam:

Early Rise Malcolm Joni
VG-85-CAN

7-08 305 17655 4.1 726 3.6 631
 Lifetime 118936 4.6 5414 3.8 4528

Han Hopman

Sale Consignor Index

Aurora Ridge Dairy LLC	11
Clear-Echo Farm LLC	12
Cookiecutter Holsteins	3A,3B,5,20,21,27,28,43
Denier, Richard	44-45B
Ehrhardt Farms & Heath	J
Eildon Tweed Farm, LLC	1
Fly-Higher Holsteins LLC	13
Gardian Genetics\Fairvue Farms	10
Hollerman, Shawn	32
Jasurda, Edward	39
Jones, Lester & Sons, Inc.	18
Melarry Farms	33
Mercuro & Sollenberger	19
Nedrow, Kevin & Barbara	31
Oakfield Corners Dairy	17
Pen-Col Farms & Hembury	9
Pine-Tree Dairy	37,38
Schmitt, Tom	2
Seiz & Bishop	22
Sheland Farms, LLC	4
Trifecta Genetics	25
Twin-Ridge Genetics	7,8,14,29,35,41
Welcome Stock Farm	6
Westcoast Holsteins	16,23,34,36,42
Winstar Genetics LLC	15,24,26,30
Zimmerview Dairy	40



"an icon of the herd...Cookiecutter Epic Hazel-ET EX-92.2E EEVEE DOM...gone but never forgotten"

