



**MORE  
HOLSTEIN  
FUN IN THE SUN**

at Lido Beach Resort

**Friday, February 23, 2018**

**1:00 PM**

**Sarasota, Florida**

# Lido Beach Resort Sarasota, Florida



# More Holstein Fun in the Sun ~Lido Edition~

@ the Lido Beach Resort ~ Sarasota, FL

Friday, February 23, 2018 @ 1:00 PM

*View/bid online in Real Time at [www.cowbuyer.com](http://www.cowbuyer.com)*

*\*Bidders must pre-register & be pre-approved. Contact Aaron Ray Tompkins if you need assistance at 336-363-4639*

**A Holstein & Jersey bonanza of the most sought-after Genomic Leaders of these two breeds, plus some extreme type lots from All-American families!!**

Cocktail reception and Hors D'oeuvres at 12:00NOON in the Cypress Room at Lido Beach Resort

The Lido Beach! Tremendous Golf Courses! Famous Restaurants & Night Life! Enjoy the finest Beaches in the country! We have it planned as the Holstein event of the year! Reservations can be made by calling The Lido Beach Resort @ 1-800-441-2113 & you must mention The Cattle Exchange Event for special rates or contact our office for further details. Special rates apply for our group so be sure to mention The Cattle Exchange Event. Tampa International just 50 miles away & Sarasota/Bradenton just fifteen minutes from Lido Beach!

*-Rooms are available at the Holiday Inn next to Lido Beach Resort. Call 1-800-892-9174 or Merry Rama @ 607-435-0792 if you need assistance.*

## Sale Staff

Dave Rama..... 607-435-0792..... [daveramasr@cattlexchange.com](mailto:daveramasr@cattlexchange.com)  
Scott Culbertson..... 507-923-1881..... [scott.culbertson@peak-genetics.com](mailto:scott.culbertson@peak-genetics.com)  
Rick VerBeek..... 614-580-8662..... [raverbeek@selectsires.com](mailto:raverbeek@selectsires.com)  
Bill Rauen..... 563-607-0694..... [Bill.Rauen@genusplc.com](mailto:Bill.Rauen@genusplc.com)  
Kyle Demmer..... 563-451-5376..... [kyledemmer@ymail.com](mailto:kyledemmer@ymail.com)  
Lloyd Simon..... 715-803-5696..... [lloydbarbsimon@gmail.com](mailto:lloydbarbsimon@gmail.com)

*\*Feel free to contact any member of the sale staff to handle your bids or be on the phone during the sale!*

## Sale Clerk & Insurance

Merry Rama..... 607-435-0804..... [merryrama@cattlexchange.com](mailto:merryrama@cattlexchange.com)

*Terms of sale: We are not a bank & we do not finance cattle! Buyers will be invoiced immediately by email with overnight payments expected by money wires or good check sent by priority mail! We want a lot of participation from buyers who understand that proceeds need to be issued immediately! Buyers of embryos are responsible for their own shipping charges and expected to contact sellers direct to arrange for shipment after payment. On lots where cattle are born, buyers are expected to pay 100% down sale day. If a choice is sold from litter not yet born, the buyer must pay 35% down sale day & balance when calves are 4 months of age. Buyers are guaranteed an acceptable calf at time of pick up. Buyers of live cattle should make immediate arrangements with sellers for transportation after payment has been made to sale manager.*

Sale Managed By:

**The**  **CATTLE EXCHANGE**

**Dave & Merry Rama**

4236 Co. Hwy. 18, Delhi, NY 13753

Phone: 607-746-2226 • Fax: 607-746-2911

E-mail: [daveramasr@cattlexchange.com](mailto:daveramasr@cattlexchange.com)

Website: [www.cattlexchange.com](http://www.cattlexchange.com)

Visit us at [facebook.com/Thecattleexchange](https://www.facebook.com/Thecattleexchange)



## LOT 1

### Aurora Reason 19595-ET

3148104784 99%RHA-I  
Born 11/23/17 1/18 PTA +2944GTPI  
+1813M +.10% +96F +.02% +62P  
+1037NM\$ +10.7PL +4.1DPR 2.76SCS  
+2.42T +2.27UDC +2.02FLC  
+206FE +4.2FI +1.1LIV 7.3%SCE  
+1057CM\$

**\*The highest genomic calf to ever sell  
on public auction!**

**\*Highest of 3 full sisters**

### Aurora Ridge Dairy

2498 Angling Rd  
Aurora, NY 13026  
315-730-8489

### Blumenfield Jedi Reason-ET

3134652431 12/18 PTA +2826GTPI  
+2130M +.00% +80F +.05% +77P  
+966NM\$ +9.7PL +3.3DPR 2.67SCS  
+1.57T +1.30UDC +1.39FLC 75%R  
Jedi X VG-87 Day

### Aurora Delta 16891

3132418220 12/17 PTA +2788GTPI  
+1626M +84F +46P +882NM\$ +8.4PL  
+5.2DPR +2.30T +2.06UDC +1.68FLC  
-Recently fresh  
Sire: Mr Mogul Delta 1427-ET

### 2nd Dam:

#### Aurora Saloon 14693

GP-82 VV++G

1-10 365 39980 3.7 1464 3.0 1201

### 3rd Dam:

#### Aurora Beacon 11855

GP-83 +V+V+

1-10 286 27190 3.7 997 3.1 856  
2-09 295 31090 4.0 1258 3.1 977

~More Holstein Fun in the Sun-Lido Edition~



### Sheland McCutchen Beauty VG-87 UUUUU

2-00 365 28800 4.4 1257 3.4 984

(2nd Dam of Lot 2)

## LOT 2

### Sheland Mod Bright Blaze-ET

3146271496 99%RHA-I

Born 10/17/17 1/18 PTA +2927GTPI

+2011M +.07% +93F +.04% +72P

+1005NMS +7.6PL +2.8DPR 2.88SCS

+2.43T +2.52UDC +2.17FLC

+224FE +2.8FI +1.8LIV 5.9%SCE

+1027CMS

### Sheland Farms

11815 County Route 79

Adams, NY 13605

315-486-1263

### Bacon-Hill Pety Modesty-ET

3013654627 12/17 PTA +2827GTPI

+1744M +.08% +87F +.02% +59P

+984NMS +8.6PL +3.2DPR 3.06SCS

+1.92T +2.57UDC +2.05FLC 79%R

Pety X VG-85 DOM Supersire

### Sheland Reflector Bright-ET

3133601508 12/17 PTA +2657GTPI

+1514M +47F +64P +758NMS +7.1PL

+3.7DPR +2.09T +1.78UDC +1.72FLC

-Fresh 1/23/18

-Doing well & looks great!

Sire: S-S-I Mogul Reflector

### 2nd Dam: (Pictured above)

Sheland McCutchen Beauty

VG-87 VVVVV

2-00 365 28800 4.4 1257 3.4 984

### 3rd Dam:

Spruce-Haven Rob BS13240-ET

GP-84 VV+++

3-02 365 30670 4.5 1370 3.3 998

4-11 365 36260 4.2 1508 3.0 1071

Lifetime 104220 4.2 4367 3.1 3241

### 4th Dam:

Potters-Field Diehard Bella

EX-91.2E EEEVE

3-06 365 29640 3.2 948 3.1 932

Lifetime 100340 3.1 3086 3.1 2185

### 5th Dam:

Potters-Field WG Bella-ET

VG-88 VVEVV DOM

2-00 365 33670 4.2 1409 3.2 1091

### 6th Dam:

Miss Autumn Rud Biscuit-ET

VG-87 EVVVV GMD-DOM

1-10 365 41190 4.3 1754 3.5 1431

Lifetime 122900 4.1 5080 3.4 4200

### 7th Dam:

O-C-E-C Bellwood Baby-ET

VG-85 +V+VV GMD-DOM

2-05 314 30720 4.3 1324 3.0 935

### 8th Dam: Spring-Born Cleitus Bess

VG-86 VVVV GMD-DOM

2-02 365 31260 4.9 1526 3.2 1012

### 9th Dam: Spring-Born Ned Bernadette

VG-87 VEVVV GMD-DOM

3-04 365 37160 4.5 1654 3.2 1177

Lifetime 112590 4.4 4989 3.4 3810

### 10th Dam:

Star-Bright-Vu Chairman Betty

VG-88 VEVV

3-08 365 29580 3.0 895 3.0 894

Lifetime 138280 3.4 4688 3.0 4110

### 11th Dam: James-Hill Elevation Betsy

EX-94.3E EEEE GMD-DOM

8-02 365 47070 4.4 2055 2.6 1209

Lifetime 195538 3.6 6965 2.7 2261



**Seagull-Bay Miss America-ET UG-87 UUUUU DOM**

2-03 365 31750 4.3 1368 3.5 1120

(3rd Dam of Lots 3 & 13)

**LOT 3**

**Ri-Val-Re Achvr Jazzy-ET**

3145286899 99%RHA-I  
 Born 10/28/17 1/18 PTA +2917GTPI  
 +941M +.23% +97F +.05% +43P  
 +1043NM\$ +10.5PL +5.2DPR 2.53SCS  
 +1.60T +2.07UDC +1.26FLC  
 +195FE +5.5FI +3.3LIV 7.3%SCE  
 +1083CMS

**Jerry Jorgensen**

4765 Moyer Rd  
 Webberville, MI 48892

517-712-0359

**ABS Achiever-ET**

3128557482 12/17 PTA +2874GTPI  
 +984M +.30% +120F +.06% +48P  
 +1068NM\$ +9.4PL +3.0DPR 2.77SCS  
 +1.37T +2.07UDC +1.31FLC 79%R  
 Yoder X GP-83 AltaEmbassy

**Peak Jazzy 20137-ET-ET**

3131664047 12/17 PTA +2711GTPI  
 +926M +70F +39P +843NM\$ +9.5PL  
 +4.7DPR +1.55T +1.39UDC +1.05FLC  
 -Very nice bred heifer  
 Sire: De-Su AltaSuperstar-ET

**2nd Dam:**

Compass-TRT Amrica Jabra-ET  
 VG-85 +VGVV  
 2-06 365 27010 4.8 1288 4.0 1067

**3rd Dam: (Pictured above)**

Seagull-Bay Miss America-ET  
 VG-87 VVVVV DOM  
 2-03 365 31750 4.3 1368 3.5 1120  
 \*Supersire's FULL sister!

**4th Dam:**

Ammon-Peachey Shauna-ET  
 EX-90 EEEVV GMD-DOM  
 2-01 365 35120 4.1 1427 3.3 1145  
 \*Global Cow of the Year 2015

-AI sons include: Supersire, Headliner, etc

**5th Dam:**

Pine-Tree Martha Sheen-ET  
 VG-86 VV+VV DOM  
 1-11 365 31210 4.2 1305 3.1 968

**6th Dam:**

Pine-Tree Missy Martha-ET  
 VG-86 VVV+V DOM  
 2-02 365 34730 3.6 1266 3.1 1070

**7th Dam:**

Wesswood-HC Rudy Missy-ET  
 EX-92,3E EEEEE GMD-DOM  
 4-11 365 40880 4.1 1665 3.4 1385  
 Lifetime 119610 4.1 4885 3.4 4031  
 \*Global Cow of the Year 2014

**8th Dam: Wesswood Elton Mimi**  
 EX-90 EEEEE GMD-DOM  
 3-05 365 35380 3.3 1160 3.0 1054

**9th Dam: Wesswood Mandingo Ivy**  
 VG-87 VEEVV  
 6-05 365 36330 3.6 1305 2.8 1018  
 Lifetime 144060 3.4 4933 2.9 4139

**10th Dam: Wesswood Astro Matt Ester**  
 VG-87 VEVV GMD-DOM  
 Lifetime 140110 3.6 5029 3.0 4158

**11th Dam: Wesswood Bell Claudette**  
 VG-87 GMD-DOM  
 8-04 365 38150 3.8 1443 2.8 1064  
 Lifetime 280980 3.6 9997 2.9 8092

~More Holstein Fun in the Sun-Lido Edition~



### Clear-Echo Mcutchen 2820-ET VG-85-CAN

4-00 365 38565 5.0 1933 3.8 1457

(3rd Dam of Lot 4)

## LOT 4

### Gillette Robson Cleamagic

12934373C 99%RHA-I

Born 12/4/17 2/18 PTA +2916GTPI

+1046M +.26% +109F +.10% +61P

+1062NMS +11.4PL +4.6DPR 2.73SCS

+1.58T +1.23UDC +.72FLC

+231FE +4.8FI +1.2LIV 6.3%SCE

+1119CMS

#6 AltaRobson of the breed

\*The highest AltaRobson to ever sell  
on public auction

### Ferme Gillette Inc.

1623 St. Andre Rd

Embrun, ON K0Z 1W0 CANADA

613-229-3023

### Bomaz AltaRobson-ET

73953484 12/17 PTA +2802GTPI

+835M +.21% +89F +.11% +55P

+909NMS +8.6PL +4.7DPR 2.86SCS

+1.52T +1.35UDC +1.42FLC 78%R

Rubicon X VG-86 DOM Bob

### Gillette Jedi Cleavage

12515032C 12/18 PTA +2707GTPI

+1440M +76F +60P +844NMS +8.7PL

+3.2DPR +1.86T +1.84UDC +1.00FLC

-Due 3/13/18

Sire: S-S-I Montross Jedi-ET

### 2nd Dam:

Gillette Bombero Clever

GP-83-CAN

2-02 307 24769 4.7 1171 3.7 904

### 3rd Dam: (Pictured above)

Clear-Echo Mcutchen 2820-ET  
VG-85-CAN

2-05 365 33446 4.7 1583 37 1235

4-00 365 38565 5.0 1933 3.8 1457

### 4th Dam:

Clear-Echo M-O-M 2213-ET  
VG-86 VVVVV DOM

3-08 365 42880 4.0 1275 3.4 1475

5-02 365 39090 4.0 1564 3.5 1356

Lifetime 134800 4.1 5493 3.5 4726

### 5th Dam:

Clear-Echo 822 Laud 1266-ET  
EX-91 VEEVE DOM

2-00 365 39470 3.2 1245 2.9 1137

4-02 365 44440 3.1 1399 2.8 1264

Lifetime 162020 3.3 5291 3.0 4795

### 6th Dam:

Clear-Echo Hersh D-Rac 822  
VG-87 VVVVV DOM

2-01 365 36240 2.9 1062 3.0 1091

4-05 365 40830 3.1 1273 2.8 1158

Lifetime 152450 3.1 4692 3.0 4630

### 7th Dam:

Clear-Echo Decisn L-Rac 505  
VG-86 VEV+V GMD-DOM

5-01 365 39390 3.9 1528 3.1 1232

Lifetime 150760 4.2 6372 3.4 5108

### 8th Dam:

Clear-Echo Lily Rac 264-ET  
GP-84 DOM

2-11 365 32980 4.3 1410 3.4 1137

Lifetime 110650 4.5 5013 3.3 1127



**Pen-Col Shamrock Ginger-ET VG-87 UUUUU**

2-10 365 25663 3.4 876 3.1 791

(3rd Dam of Lot 5)

**LOT 5**

**Wa-Del-AG Bourbon Gala-ET**

144325250 100%RHA-NA  
Born 9/22/17 1/18 PTA +2896GTPI  
+2014M +.09% +98F +.03% +69P  
+1006NMS +9.5PL +3.0DPR 2.76SCS  
+2.02T +2.41UDC +1.20FLC  
+221FE +3.0FI +1.8LIV 8.1%SCE  
+1027CMS

**#1 GTPI & Net Merit Bourbon dau.**

**Arlan Garber and Rick Wadel**

7134 White Church Rd  
Shippensburg, PA 17257  
Rick 717-860-9786  
Arlan 717-860-4544

**Wa-Del ABS Bourbon-ET**

3014558977 12/17 PTA +2741GTPI  
+2253M -.05% +70F +.01% +71P  
+816NMS +6.4PL +3.1DPR 2.79SCS  
+2.12T +2.07UDC +1.30FLC 79%R  
Montross X VG-85 Massey

**Pen-Col Silver Ginger-ET**

74258400 12/17 PTA +2667GTPI  
+1421M +99F +51P +822NMS +6.9PL  
+.2DPR +2.29T +2.35UDC +1.15FLC  
-Was a great looking heifer lost due to  
complications during calving  
Sire: Seagull-Bay Silver-ET

**2nd Dam:**

Pen-Col SS Gina-ET  
VG-85 VV++V  
2-00 305 24910 3.8 941 2.9 733

**3rd Dam: (Pictured above)**

Pen-Col Shamrock Ginger-ET  
VG-87 VVVVV  
2-10 365 25663 3.4 876 3.1 791

**4th Dam:**

Vision-Gen Super Geneva-ET GP-83  
4-02 337 27110 3.3 908 3.5 938

**5th Dam:**

Regancrest-Lov Geva-ET  
EX-90 EEVVE  
4-04 365 31550 4.4 1387 3.2 1007

**6th Dam:**

Nors Bianca Outside Brita  
EX-90,2E EEVVE  
5-06 365 39230 3.2 1251 2.8 1112  
Lifetime 152010 3.3 5054 3.2 4666

**7th Dam:**

Rgncrest-RH Durham Bianca-ET  
EX-92,2E EEEEE  
3-11 365 37690 3.5 1313 3.3 1249  
Lifetime 106900 3.5 3772 3.4 3643

**8th Dam:**

Regancrest Juror Brina-ET  
EX-92 EEVVE GMD  
4-04 365 40640 3.6 1478 2.8 1140  
\*Res. Grand Champion Iowa State Fair

**9th Dam:**

Regancrest Aerostar Bert-ET  
EX-90 EEVVV GMD-DOM  
5-02 365 37790 3.6 1357 3.2 1215  
Lifetime 109350 3.7 4031 3.3 3558

**10th Dam:**

Regancrest Mark Chairman Bea  
EX-91,2E VEEE GMD-DOM  
7-09 365 33830 3.8 1276 3.1 1052  
Lifetime 140130 4.1 5711 3.3 4616

**11th Dam:**

Regancrest Board Chairman Bea  
EX-90 VEVE  
5-09 365 26010 4.1 1059 3.4 884



~More Holstein Fun in the Sun-Lido Edition~



### OCD Supersire 9882-ET VG-86 VV++V DOM

2-01 365 31870 4.1 1310 3.4 1083

(2nd Dam of Lot 6, 11, 12 & 24)

## LOT 6

### Ri-Val-Re Achvr Paula-ET

3145286936- pending

Born 11/16/17 1/18 PTA +2881GTPI

+1258M +.24% +113F +.06% +54P

+1009NMS +8.6PL +3.5DPR 2.78SCS

+1.54T +2.07UDC +1.08FLC

+222FE +3.7FI +2.6LIV 7.4%SCE

+1043CMS

### Jerry Jorgensen

4765 Moyer Rd

Webberville, MI 48892

517-712-0359

### ABS Achiever-ET

3128557482 12/17 PTA +2874GTPI

+984M +.30% +120F +.06% +48P

+1068NMS +9.4PL +3.0DPR 2.77SCS

+1.37T +2.07UDC +1.31FLC 79%R

Yoder X GP-83 AltaEmbassy

### Pine-Tree 9882 Prof 7009-ET

3132116861 12/17 PTA +2529GTPI

+1211M +57F +44P +751NMS +8.7PL

+4.3DPR +.73T +1.09UDC +.37FLC

-Due in Spring and looks great!

Sire: S-S-I Partyrock Profit-ET

### Maternal brothers include:

7HO13771 Kennedy +2862GTPI

7HO13770 Hoover +2793GTPI

7HO12899 Slamdunk +2756GTPI

7HO12897 Samuri +2740GTPI

### 2nd Dam: (Pictured above)

OCD Supersire 9882-ET

VG-86 VV++V DOM

2-01 365 31870 4.1 1310 3.4 1083

\*Multiple active AI sons

\*Sold for \$270,000 in World Classic 2016

### 3rd Dam:

OCD Robust Shimmer-ET

EX-90 EEVVE DOM

2-03 365 34350 3.5 1200 3.2 1086

### 4th Dam:

Ammon-Peachey Shana-ET

VG-87-CAN as 2yr-old DOM

2-02 365 34191 4.8 1653 3.4 1164

FULL sister: Ammon-Peachey Shauna EX-91

-dam of Supersire, Headliner, etc.

### 5th Dam:

Pine-Tree Martha Sheen-ET

VG-86 VV+VV DOM

1-11 365 31210 4.2 1305 3.1 968

### 6th Dam: Pine-Tree Missy Martha-ET

VG-86 VVV+V DOM

2-02 365 34730 3.6 1266 3.1 1070

### 7th Dam:

Wesswood-HC Rudy Missy-ET

EX-92,3E EEEEE GMD-DOM

4-11 365 40880 4.1 1665 3.4 1385

Lifetime 119610 4.1 4885 3.4 4031

\*Global Cow of the Year 2014

### 8th Dam: Wesswood Elton Mimi

EX-90 EEEEE GMD-DOM

3-05 365 35380 3.3 1160 3.0 1054

### 9th Dam: Wesswood Mandingo Ivy

VG-87 VEEVV

6-05 365 36330 3.6 1305 2.8 1018

Lifetime 144060 3.4 4933 2.9 4139

### 10th Dam: Wesswood Astro Matt Ester

VG-87 VEEVV GMD-DOM

6-08 365 31860 3.5 1125 2.9 921

Lifetime 140110 3.6 5029 3.0 4158

### 11th Dam: Wesswood Bell Claudette

VG-87 GMD-DOM

8-04 365 38150 3.8 1443 2.8 1064

Lifetime 280980 3.6 9997 2.9 8092



**Sully Planet Manitoba-ET VG-85-CAN DOM**

4-01 365 43669 3.5 1565 3.2 1402

(3rd Dam of Lot 7)

**LOT 7**

**Genosource Maple 38143-ET**

3146202693 100%RHA-NA  
Born 9/8/17 12/17 PTA +2878GTPI  
+1350M +.14% +89F +.06% +57P  
+945NMS +9.3PL +3.8DPR 2.62SCS  
+2.28T +2.20UDC +1.38FLC  
+186FE +4.1FI +1.7LIV 7.7%SCE

**\*Ready to IVF soon!**

**#4 GTPI Dynamo daughter!**

**Genosource**

2188 78th Street  
Blairstown, IA 52209  
Tim Rauen 563-451-5866  
Kyle Demmer 563-451-5376  
Amanda Hauck 570-765-0536

**Mr Rubicon Dynamo-ET**

3132198333 12/17 PTA +2819GTPI  
+2056M +.03% +87F +.01% +65P  
+961NMS +8.4PL +2.4DPR 2.79SCS  
+1.66T +2.15UDC +1.49FLC 80%R  
Rubicon X VG-87 GMD-DOM Robust

**Sully Lottomax Madelyn-ET**

**2-05 GP-80 +++GG 3128656194**  
12/17 PTA +2582GTPI +641M +77F  
+34P +686NMS +7.2PL +3.2DPR  
+2.64T +1.80UDC +.83FLC  
2-02 209 18636 3.8 701 3.1 578 RIP  
Sire: Rockymountain Lottmax-ET

**2nd Dam:**

**Sully Uno Magnifique-ET**  
VG-87 EVV+V

**3rd Dam: (Pictured above)**  
**Sully Planet Manitoba-ET**  
VG-85-CAN DOM

4-01 365 43669 3.5 1565 3.2 1402

**4th Dam:**

**Sully Shottle May-ET**  
EX-90 EEEEE DOM  
5-04 365 38970 3.5 1354 3.1 1226  
**\*Former #1 GTPI & GLPI cow**

**5th Dam:**

**Ms Sully Oman Muetze-ET**  
EX-90 EEEV DOM  
4-08 365 33860 3.4 1164 3.4 1150  
Lifetime 176480 3.7 6536 3.5 6110

**6th Dam:**

**Johnan Marshall Mint**  
VG-85, VG-MS  
2-02 365 31030 3.1 961 3.0 941

**7th Dam:**

**Poly-Kow Durham Mincey-ET**  
VG-88 VG-MS  
3-03 365 31780 3.0 951 3.0 968

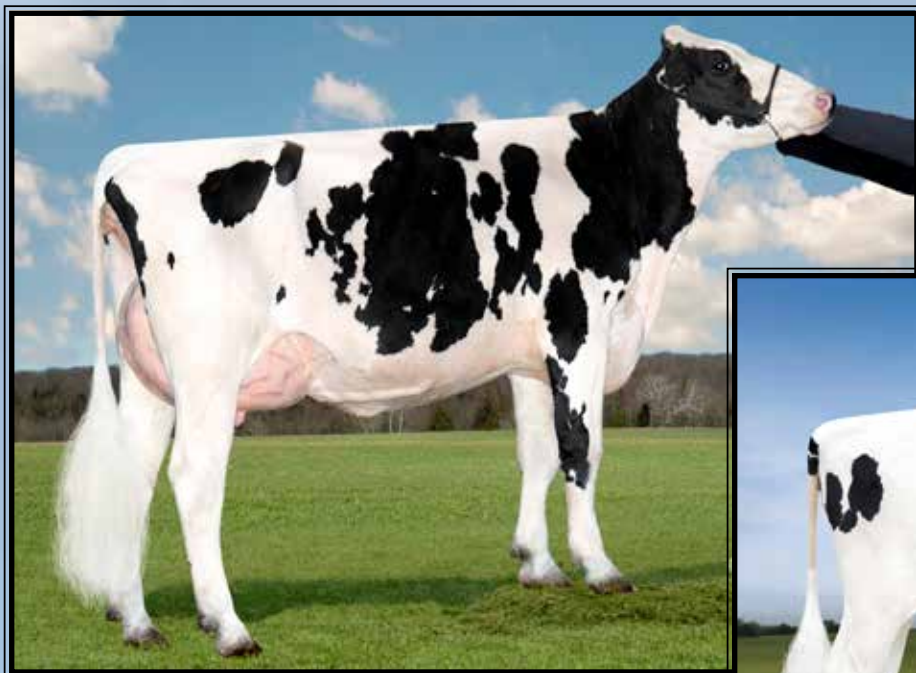
**8th Dam:**

**Poly-Kow Rudolph Mink-ET**  
VG-85, VG-MS DOM  
4-08 365 30700 3.4 1053 3.2 972

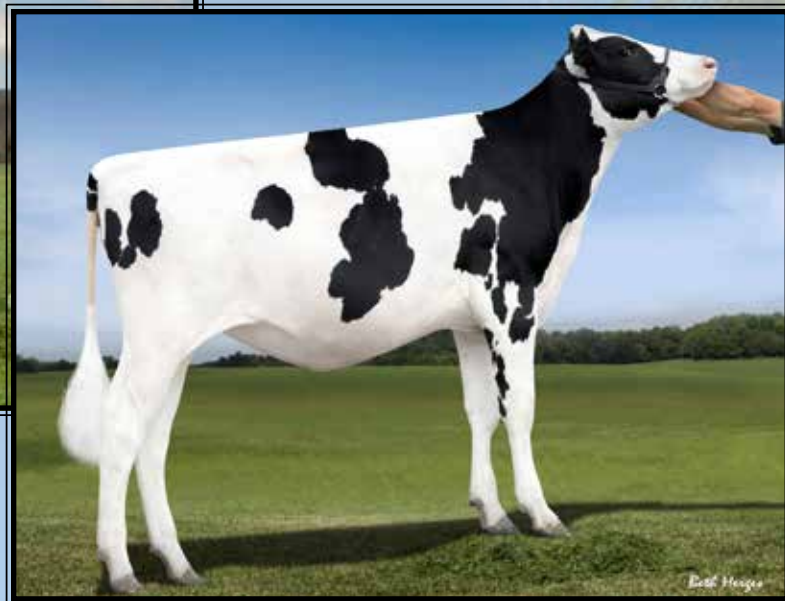
**9th Dam:**

**Poly-Kow Lindy Mindy-ET**  
VG-88, VG-MS GMD DOM  
3-08 365 39550 4.0 1589 3.0 1175  
Lifetime 150290 3.9 5820 3.0 4556

**10th Dam thru 13th Dams all VG**



**Lactomont Loak Oak-ET**  
**VG-85 VV++V**  
 2-00 365 41940 3.2 1323 3.0 1249  
 (2nd Dam of Lot 8)



**Ms Rubicon Love-ET**  
 (Dam of Lot 8)

**LOT 8**

**Stunning-M Copycat Lexus-ET**

3145966764 99%RHA-I  
 Born 11/7/17 1/18 PTA +2875GTPI  
 +1401M +.21% +108F +.07% +65P  
 +973NM\$ +8.1PL +2.5DPR 2.80SCS  
 +2.12T +2.07UDC +1.62FLC  
 +223FE +2.6FI +1.9LIV 7.5%SCE  
 +1016CMS

**#1 GTPI & #2 NM\$ Copycat dau!**

**\*Housed at Synergy Genetics, NY**

*Austin Yoder & Matthias Swartzentruber*

5731 State Route 26E  
 Montezuma, GA 31063  
 478-244-9063

**Sandy-Valley Copycat-TW-ET**

3014562172 12/17 PTA +2827GTPI  
 +1524M +.09% +77F +.06% +61P  
 +854NM\$ +8.0PL +4.7DPR 2.74SCS  
 +2.47T +2.22UDC +1.82FLC 76%R  
 Jedi X VG-85 Jacey

**Ms Rubicon Love-ET**

3130765049 12/17 PTA +2694GTPI  
 +1977M +98F +65P +893NM\$ +7.2PL  
 +1.84T +2.05UDC +1.41FLC  
 -Nice heifer Due 3/7/18  
 Sire: EDG Rubicon-ET

**2nd Dam: (Pictured above)**  
**Lactomont Loak Oak-ET**  
**VG-85 VV++V**

2-00 365 41940 3.2 1323 3.0 1249

**3rd Dam:**  
**Summerliz Man O Man Lausy-ET**  
**VG-87-CAN, EX-MS**

2-07 365 31364 4.0 1265 3.5 1089

**4th Dam:**  
**Summerliz Lausyna Shottle-ET**  
**VG-87-CAN, 86-MS**

5-07 365 32203 3.8 1215 3.3 1052  
 Lifetime 110420 3.9 4298 3.3 3686

**5th Dam:**  
**Comestar Lausinady Goldwyn**  
**VG-87-CAN, 87-MS**  
 5-02 365 29381 3.6 1065 3.0 882  
 Lifetime 128206 3.8 4879 3.2 4087

**6th Dam:**  
**Comestar Lausinadia Champion**  
**VG-86-CAN VG-MS**  
 2-02 365 30814 4.8 1479 3.5 1093

**7th Dam:**  
**Comestar Lausina Storm**  
**EX-CAN, 91-MS**  
 4-07 365 43693 4.4 1931 3.4 1470  
 7-03 365 44941 4.3 1918 3.4 1515  
 Lifetime 202305 4.3 8649 3.4 6964

**8th Dam:**  
**Comestar Lausan Black**  
**VG-87-CAN, 88-MS**  
 5-04 365 37039 4.3 1587 3.6 1318  
 Lifetime 108246 4.4 4736 3.8 4151

**9th Dam:**  
**Comestar Laurie Sheik-ET**  
**VG-88-CAN 92-MS&FL**  
 6-09 365 29864 4.5 1329 3.4 1016  
 \*HM All-Am & All-Can Sr 2yr-old 1989  
 \*Canadian Cow of the Year 1995

**10th Dam: Elysa Anthony Lea**  
**EX-CAN 90-MS 95-FL**  
 6-02 365 35770 3.9 1398 2.9 1049  
 Lifetime 109850 4.0 4334 3.1 3439



**Vision-Gen Manoman Gildie VG-87 EUUUU DOM**

2-00 365 32250 4.4 1409 3.2 1037

(4th Dam of Lot 9)

**LOT 9**

**RivalreFaria Frazz Gigi**

3145287013 99%RHA-I  
Born 1/7/18 2/18 PTA +2891GTPI  
+1889M +.02% +76F +.04% +67P  
+1012NMS +11.2PL +4.2DPR 2.57SCS  
+1.83T +2.12UDC +.81FLC  
+184FE +4.4FI +2.7LIV 7.0%SCE  
+1042CMS

**Jerry Jorgensen**

4765 Moyer Rd  
Webberville, MI 48892  
517-712-0359

**Melarry Josuper Frazzled-ET**

74261651 12/17 PTA +2797GTPI  
+2465M +.02% +97F +.00% +73P  
+995NMS +9.0PL +1.5DPR 2.66SCS  
+1.26T +1.55UDC +.67FLC 79%R  
Josuper X VG-85 Shotgun

**Denistier Vivejoie Dozer Gi-ET**

109835944 12/17 PTA +2636GTPI  
+1455M +64F +56P +808NMS +8.5PL  
+3.0DPR +1.45T +2.36UDC +.73FLC  
-Due this Summer and looks great!  
Sire: Mr Shot Dozer 1491-ET

**2nd Dam:**

**Denistier Vivejoie Mardi Gael**  
VG-86-CAN 86-MS  
2-02 319 24802 4.7 1157 3.6 888

**3rd Dam:**

**Welcome Supersire Gaila-ET**  
VG-85-CAN 86-MS  
3-06 365 33323 4.4 1477 3.5 1160

**4th Dam: (Pictured above)**

**Vision-Gen Manoman Gildie**  
VG-87 EUUUU DOM  
2-00 365 32250 4.4 1409 3.2 1037

**5th Dam:**

**Vision-Gen Mac Gild-TW**  
VG-87 VVVVV  
3-07 365 34420 4.2 1437 3.0 1031

**6th Dam:**

**Welcome Outside Golden-ET**  
EX-90 EEEVV GMD-DOM  
4-06 365 39890 4.3 1727 3.3 1330  
Lifetime 154800 4.2 6526 3.5 5429

**7th Dam:**

**Welcome Lantz Gahna-ET**  
VG-87 VEV+V GMD-DOM  
4-09 305 39840 3.3 1308 3.0 1207

**8th Dam:**

**Welcome Hunter Giblet**  
EX-90 EEEEEV GMD-DOM  
4-08 365 39730 3.4 1368 3.3 1307

**9th Dam:**

**Welcome Elton Gourmet**  
VG-87, VG-MS GMD-DOM  
3-03 365 34720 3.4 1165 3.1 1092

**10th Dam:**

**Welcome Mark Goldie-ET**  
VG-86, VG-MS GMD  
4-02 365 34700 3.4 1160 3.0 1026

**11th thru 13th Dams ALL VG or EX**

~More Holstein Fun in the Sun-Lido Edition~



**Ms TCF Cherry-Acres Lori-ET VG-87 UUU+U**

1-11 292 27680 4.3 1201 3.4 947

(2nd Dam of Lot 10)

**LOT 10**

**Cherry-Acres Pinn Luedke-ET**

3143928839 99%RHA-I

Born 12/12/17 2/18 PTA +2861GTPI

+1622M +.06% +79F +.05% +64P

+1000NMS +10.7PL +4.0DPR 2.83SCS

+2.08T +2.05UDC +1.76FLC

+197FE +3.7FI +3.7LIV 6.9%SCE

+1030CMS

\*Very early Pinnacle!

**Ron Hembury**

3119 Muncy Exchange Rd

Muncy, PA 17756

570-546-8135

**S-S-I Modesty Pinnacle-ET**

3135087428 12/17 PTA +2888GTPI

+2227M -.02% +79F +.01% +70P

+1007NMS +10.0PL +3.2DPR 2.95SCS

+2.40T +2.47UDC +2.50FLC 74%R

Modesty X Montross

**Cherry-Acres Jed Lorinda-ET**

3138997612 12/17 PTA +2811GTPI

+1985M +91F +74P +7.7PL +2.4DPR

+2.42T +2.08UDC +1.22FLC

-Due September, 2018

Sire: S-S-I Montross Jedi-ET

\*Tremendous embryo producer

\*Now owned by Rickland Holsteins

**2nd Dam: (Pictured above)**

**Ms TCF Cherry-Acres Lori-ET**

**VG-87 VVV+V**

1-11 292 27680 4.3 1201 3.4 947

**3rd Dam:**

**Tiger-Lily Uno Leah-ET**

**VG-87 +V+VV**

3-02 341 31990 4.5 1425 3.4 1072

**4th Dam:**

**Tiger-lily Planet Limbo**

**VG-85 +VG+V DOM**

4-02 365 35750 3.7 1338 3.3 1193

**5th Dam:**

**Tiger-Lily Bret Lonnie**

**GP-82, VG-MS**

3-03 338 29440 4.2 1246 3.3 979

**6th Dam:**

**Tiger-Lily Magna Lucy-ET GP-82**

2-02 365 30070 3.7 1123 3.3 995

**7th Dam: B-Y-U Addison Leora-ET**

**VG-86 VE+GV GMD-DOM**

3-11 365 37550 3.9 1458 3.4 1291

Lifetime 130140 3.7 4781 34 4403

**8th Dam: Glen-Toctin Win Loretta-ET**

**VG-85 +E+GV GMD-DOM**

2-01 305 29380 3.4 1002 3.2 946

**9th Dam: Unicorn Celcius Lei-ET**

**VG-86 VVEVV GMD-DOM**

2-00 365 27840 4.5 1240 3.6 1001

**10th Dam: Unicorn Blackstar Lilly**

**VG-87 EEV+V GMD-DOM**

2-00 305 24910 4.0 1001 3.3 819

**11th Dam: Catoctin Melwood Loni-ET**

**VG-87 EEEGV GMD-DOM**

2-00 365 26760 4.3 1162 3.5 945

**12th Dam: Unicorn Lucky Lynn-ET**

**VG-85 +VE+ GMD-DOM**

5-06 365 37580 3.5 1320 3.2 1190

**13th Dam: Unicorn Chairman Lynn**

**EX-90 EEEV GMD-DOM**

7-02 365 36990 3.8 1416 3.2 1187

Lifetime 135090 4.2 5664 3.4 4558



**OCD Supersire 9882-ET VG-86 VV++V DOM**

2-01 365 31870 4.1 1310 3.4 1083

(2nd Dam of Lot 6, 11, 12 & 24)

**LOT 11**

**Westcoast Imax Faria 6141**

12843308C 99%RHA-I  
 Born 9/4/17 12/17 PTA +2857GTPI  
 +1931M +.04% +85F +.03% +67P  
 +927NMS +8.2PL +3.3DPR 2.83SCS  
 +2.36T +2.37UDC +1.60FLC  
 +196FE +3.5FI +.7LIV 7.0%SCE

**\*Ready to IVF soon!**

**LOT 12**

**Westcoast Guarentee Faria 6262**

12843429C 99%RHA-I  
 Born 10/7/17 12/17 PTA +2814GTPI  
 +1888M +.05% +85F +.06% +72P  
 +968NMS +9.8PL +3.6DPR 2.69SCS  
 +1.61T +1.25UDC +.57FLC  
 +211FE +3.7FI +1.4LIV 7.5%SCE  
 +1002CMS

**\*Lots 11&12 Housed in Ponoka, Alberta**  
 -Westcoast will truck for free to Ontario  
 if needed for easier pickup.

**Westcoast Holsteins**

47749 Prairie Central Rd  
 Chilliwack, BC V2P 6H3 CANADA  
 604-792-1084

**Sire of Lot 11:**

**Silverridge V Imax-ET**  
 12264620C 12/17 PTA +2757GTPI  
 +1704M +.07% +83F +.01% +54P  
 +858NMS +7.1PL +2.3DPR 2.92SCS  
 +2.41T +2.83UDC +1.75FLC 78%R  
 AltaSpring X Mogul

**Sire of Lot 12:**

**Westcoast Guarantee-ET**  
 12371147C 12/17 PTA +2759GTPI  
 +1371M +.11% +81F +.07% +60P  
 +949NMS +9.7PL +4.5DPR 2.57SCS  
 +1.08T +1.13UDC +.17FLC 76%R  
 Boastful X GP-83 Tango

**Dam of Lots 11 & 12:**

**Pine-Tree Jedi 9882Faria-ET**  
 143837523 12/17 PTA +2791GTPI  
 +2562M +88F +78P +905NMS +7.7PL  
 +3.2DPR +1.85T +1.46UDC +.35FLC  
 -Short-bred heifer  
 Sire: S-S-I Montross Jedi-ET

**2nd Dam: (Pictured above)**  
**OCD Supersire 9882-ET**  
**VG-86 VV++V DOM**  
 2-01 365 31870 4.1 1310 3.4 1083  
**\*Multiple active AI sons**  
**\*Sold for \$270,000 in World Classic 2016**

**3rd Dam:**  
**OCD Robust Shimmer-ET**  
**EX-90 EEVVE DOM**  
 2-03 365 34350 3.5 1200 3.2 1086

**4th Dam:**  
**Ammon-Peachey Shana-ET**  
**VG-87-CAN as 2yr-old DOM**  
 2-02 365 34191 4.8 1653 3.4 1164  
**FULL sister: Ammon-Peachey Shauna EX-91**  
 -dam of Supersire, Headliner, etc.

**5th Dam:**  
**Pine-Tree Martha Sheen-ET**  
**VG-86 VV+VV DOM**  
 1-11 365 31210 4.2 1305 3.1 968

**6th Dam: Pine-Tree Missy Martha-ET**  
**VG-86 VVV+V DOM**  
 2-02 365 34730 3.6 1266 3.1 1070

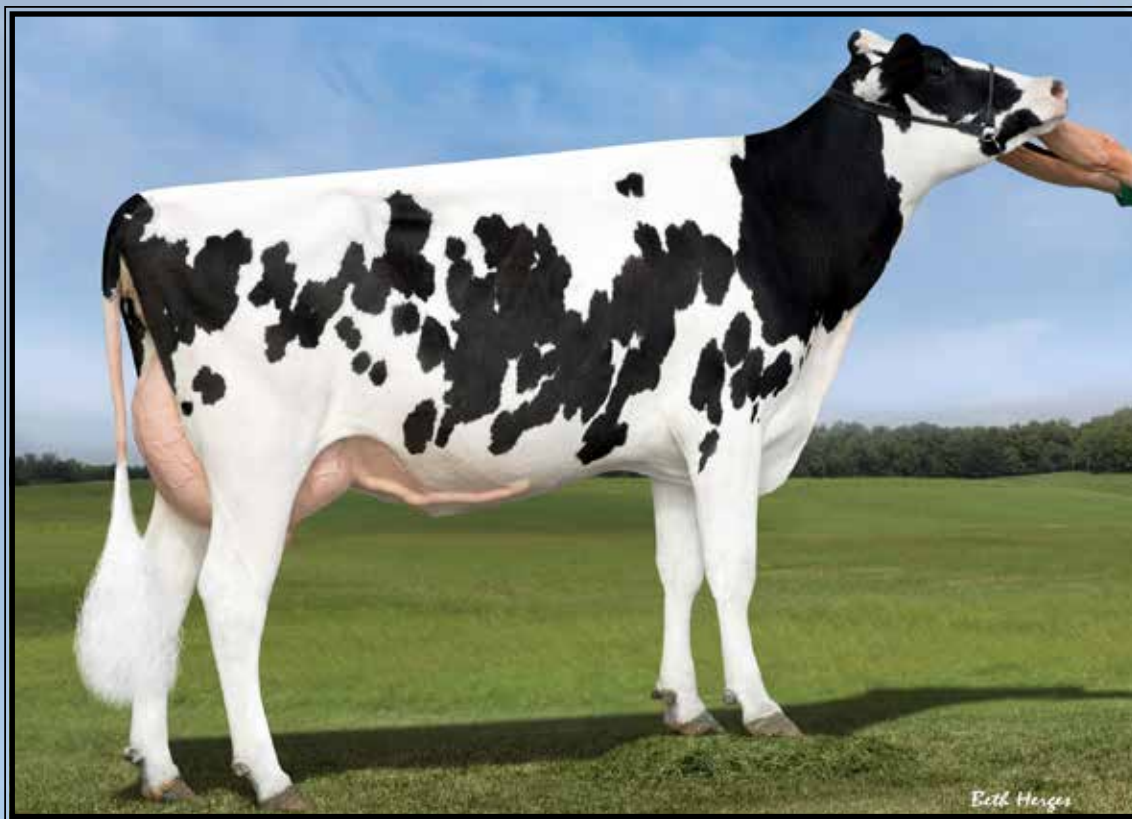
**7th Dam:**  
**Wesswood-HC Rudy Missy-ET**  
**EX-92.3E EEEEE GMD-DOM**  
 4-11 365 40880 4.1 1665 3.4 1385  
 Lifetime 119610 4.1 4885 3.4 4031  
**\*Global Cow of the Year 2014**

**8th Dam: Wesswood Elton Mimi**  
**EX-90 EEEEE GMD-DOM**  
 3-05 365 35380 3.3 1160 3.0 1054

**9th Dam: Wesswood Mandingo Ivy**  
**VG-87 VEEVV**  
 6-05 365 36330 3.6 1305 2.8 1018  
 Lifetime 144060 3.4 4933 2.9 4139

**10th Dam: Wesswood Astro Matt Ester**  
**VG-87 VEVV GMD-DOM**  
 6-08 365 31860 3.5 1125 2.9 921  
 Lifetime 140110 3.6 5029 3.0 4158

**11th Dam: Wesswood Bell Claudette**  
**VG-87 GMD-DOM**  
 8-04 365 38150 3.8 1443 2.8 1064  
 Lifetime 280980 3.6 9997 2.9 8092



**S-S-I Moonry Myesha 9071-ET VG-85 UUU+U @ 2-10 DOM**

2-01 365 33260 4.0 1330 3.5 1152  
(2nd Dam of Lots 13, 14, 21, 22 & 47)

**LOT 13**

**Pine-Tree 774 Medle 7672-ET**

3145982618 99%RHA-I  
Born 8/28/17 12/17 PTA +2814GTPI  
+2077M +.01% +79F +.02% +70P  
+1019NMS\$ +10.3PL +2.5DPR 2.77SCS  
+1.34T +1.74UDC +.92FLC  
+200FE +2.7FI +5.2LIV 5.8%SCE  
**+159 RZG +1040CMS**

*\*GenElite German clients would like to inspect during their June Trip.*

**\*Ready to IVF soon!**

**LOT 14**

**Pine-Tree 774 Achie 7686-ET**

3145982632 99%RHA-I  
Born 9/4/17 12/17 PTA +2787GTPI  
+1229M +.18% +94F +.07% +57P  
+982NMS\$ +9.1PL +3.0DPR 2.78SCS  
+1.20T +1.83UDC +1.13FLC  
+210FE +2.9FI +3.4LIV 7.0%SCE  
+1022CMS

**\*Ready to IVF soon!**

**Same maternal line as:  
Flagship, Jedi & Jett**

**Pine-Tree Dairy**

8586 Benner Rd  
Marshallville, OH 44645  
330-466-8916

**Sire of Lot 13:**

**ABS Medley-ET**

3128557570 12/17 PTA +2844GTPI  
+1860M +.07% +89F +.04% +66P  
+1025NMS\$ +9.8PL +2.9DPR 2.86SCS  
+1.76T +1.44UDC +1.61FLC 78%R  
Yoder X VG-85 DOM Balisto

**Sire of Lot 14:**

**ABS Achiever-ET**

3128557482 12/17 PTA +2874GTPI  
+984M +.30% +120F +.06% +48P  
+1068NMS\$ +9.4PL +3.0DPR 2.77SCS  
+1.37T +2.07UDC +1.31FLC 79%R  
Yoder X GP-83 AltaEmbassy

**Dam of Lots 13 & 14:**

**Seagull-Bay My Octavia-ET**

**2-04 GP-81 G+G++** 3128978122  
12/17 PTA +2674GTPI +1564M +64F  
+56P +830NMS\$ +9.7PL +2.8DPR  
+1.88T +2.08UDC +1.33FLC  
2-01 97 8902 3.8 337 3.0 264 RIP  
-milking 90 lbs/day

Sire: Ladys-Manor Octoberfest-ET

**\*Made 15 transferrable embryos on a conv. flush at 90 days fresh**

**2nd Dam: (Pictured above)**

**S-S-I Moonry Myesha 9071-ET VG-85 VVV+V DOM**

2-01 365 33260 4.0 1330 3.5 1152

**3rd Dam: (Pictured w/ Lot 21)**

**S-S-I Bookem Modesto 7269-ET VG-87 VV+V DOM**

3-03 305 25995 3.8 982 3.5 909

**AI sons include: Mando & Marshman**

**4th Dam:**

**Roylane Shot Mindy 2079-ET VG-86 VVVV DOM**

2-02 365 34589 4.3 1489 3.3 1148

**\*Dam of 'Monarch' at Select!**

**5th Dam:**

**Seagull-Bay Oman Mirror-ET VG-86 +VVV DOM**

3-00 365 36430 4.4 1606 3.6 1304

**\*Dam of sires: Robust, Bob & Punch**

**6th Dam:**

**Seagull-Bay Manat Mirage-ET EX-90 VEVVE GMD-DOM**

3-06 365 35900 3.8 1364 3.4 1229

**7th Dam:**

**Lynmead Celsius Minnow-ET \*TV EX-91,2E EEEVV GMD-DOM**

4-10 365 49550 3.7 1857 3.2 1592

Lifetime 255910 3.7 9446 3.3 8481

**8th Dam: CMV Melwood Mindy-ET VG-85 VE+V GMD-DOM**

4-01 365 36341 3.6 1305 3.4 1239

**9th Dam: Briarpatch-R Misty-ET VG-85 +E+V GMD-DOM**

2-02 365 24680 4.8 1176 3.1 776

**10th Dam: Rilara Mars Las Ravena EX-91 EEEV GMD-DOM**

4-03 305 29030 4.6 1329



**Ms America Ecstasy-ET\*RC\*PC GP-80**

2-02 365 32590 3.6 1160 3.4 1112

(2nd Dam of Lot 15)

**LOT 15**

**Ms Ri-Val-Re Windy Electra-ET\*RC**

3145640101 99%RHA-I  
 Born 9/21/17 1/18 PTA +2840GTPI  
 +1463M +.17% +100F +.03% +54P  
 +1020NMS +9.3PL +4.1DPR 2.87SCS  
 +1.03T +1.14UDC +1.75FLC  
 +215FE +4.7FI +3.8LIV 6.4%SCE  
 +1042CMS  
 -.91 stature

**#2 Red/RC GTPI heifer in the world!**

**\*One of the highest NMS & RC  
 heifers to ever sell at public auction!**

**Jerry Jorgensen**

4765 Moyer Rd  
 Webberville, MI 48892  
 517-712-0359

**Butz-Hill Windfall 54771-ET**

3010353518 12/17 PTA +2703GTPI  
 +2216M +.06% +99F -.02% +60P  
 +889NMS +6.5PL +1.6DPR 2.94SCS  
 +1.50T +2.24UDC +.91FLC 79%R  
 Montross X GP-82 DOM Supersire

**Seagull-Bay D Extreme-ET\*RC**

3128978064 12/17 PTA +2733GTPI  
 +1484M +66F +42P +905NMS +10.3PL  
 +5.3DPR +1.18T +2.07UDC +1.51FLC  
 Sire: Mr Mogul Delta 1427-ET  
**\*Extreme and her daughters are  
 prolific IVF donors!**

**2nd Dam: (Pictured above)**  
 Ms America Ecstasy-ET\*RC\*PC  
 GP-80 ++G+G  
 2-02 365 32590 3.6 1160 3.4 1112

**3rd Dam: (Pictured w/ Lot 3)**  
 Seagull-Bay Miss America-ET  
 VG-87 VVVVV DOM  
 2-03 365 31750 4.3 1368 3.5 1120  
 \*Supersire's FULL sister!

**4th Dam:**  
 Ammon-Peachey Shauna-ET  
 EX-90 EEVVV GMD-DOM  
 2-01 365 35120 4.1 1427 3.3 1145  
 \*Global Cow of the Year 2015  
 -Popular AI sons include: Supersire,  
 Headliner, Platinum, Secretariat, etc.

**5th Dam: Pine-Tree Martha Sheen-ET**  
 VG-86 VV+VV DOM  
 1-11 365 31210 4.2 1305 3.1 968

**6th Dam: Pine-Tree Missy Martha-ET**  
 VG-86 VVV+V DOM  
 2-02 365 34730 3.6 1266 3.1 1070

**7th Dam:**  
 Wesswood-HC Rudy Missy-ET  
 EX-92.3E EEEEE GMD-DOM  
 4-11 365 40880 4.1 1665 3.4 1385  
 Lifetime 119610 4.1 4885 3.4 4031  
 \*Global Cow of the Year 2014

**8th Dam: Wesswood Elton Mimi**  
 EX-90 EEEEE GMD-DOM  
 3-05 365 35380 3.3 1160 3.0 1054

**9th Dam: Wesswood Mandingo Ivy**  
 VG-87 VEEVV  
 6-05 365 36330 3.6 1305 2.8 1018  
 Lifetime 144060 3.4 4933 2.9 4139

**10th Dam: Wesswood Astro Matt Ester**  
 VG-87 VEVV GMD-DOM  
 Lifetime 140110 3.6 5029 3.0 4158

**11th Dam: Wesswood Bell Claudette**  
 VG-87 GMD-DOM  
 8-04 365 38150 3.8 1443 2.8 1064  
 Lifetime 280980 3.6 9997 2.9 8092





**Peak Marq A1 942-ET VG-85-CAN**  
(2nd Dam of Lots 16A & 16B)



**Thurler Jedi Royal**  
(Dam of Lots 16A & 16B)

**LOT 16A**

**Comfort Thrlr Guarante Roxy-ET**

12893509C 99%RHA-I  
Born 11/5/17 2/18 PTA +2842GTPI  
+1879M +.01% +73F +.07% +74P  
+996NMS +10.2PL +4.7DPR 2.90SCS  
+1.24T +1.82UDC +.77FLC  
+214FE +4.7FI +1.5LIV 5.9%SCE  
**A2A2 & +1187DWPS +1029CMS**  
**+167 RZG** (top 10 RZG in Europe!)

**LOT 16B**

**Thurler Comfrt Fortun Riana-ET**

12893528C 99%RHA-I  
Born 12/9/17  
2/18 preliminary genomics +2892GTPI  
+1153M +.05% +57F +.08% +57P  
+910NMS +10.1PL +5.0DPR 2.62SCS  
+3.03T +3.14UDC +1.47FLC  
+145FE +5.0FI 7.2%SCE

**Comfort Holsteins  
and Thurler Farms Inc.**

11313 Snowbird Rd,  
South Mountain, Ont  
c/o Mark Comfort 613 577 3263

**Sire of Lot 16A:**

**Westcoast Guarantee-ET**  
12371147C 12/17 PTA +2759GTPI  
+1371M +.11% +81F +.07% +60P  
+949NMS +9.7PL +4.5DPR 2.57SCS  
+1.08T +1.13UDC +.17FLC 76%R  
Boastful X GP-83 Tango

**Sire of Lot 16B:**

**Progenesis Fortune-ET**  
12302930C 12/17 PTA +2722GTPI  
+1240M +.06% +63F +.04% +47P  
+777NMS +8.0PL +3.5DPR 2.49SCS  
+2.51T +2.67UDC +1.67FLC  
Octoberfest X VG-86 DOM Tango

**Dam of Lots 16A & 16B:**

**Thurler Jedi Royal**  
12512403 12/17 PTA +2819GTPI  
+2007M +64F +77P +942NMS +9.7PL  
+3.0DPR +2.07T +2.31UDC +1.70FLC  
-Short bred heifer  
Sire: S-S-I Montross Jedi-ET  
(Pictured above)  
**\*Sold for \$61,000 in 2017 Nat'l Conv.**  
**\*Mat. bro: Rolan +2916GTPI at Select**

**2nd Dam: (Pictured above)**  
**Peak Marq A1 942-ET**  
**VG-85-CAN, VG-MS**  
2-04 247 17967 3.7 668 3.2 569 RIP

**3rd Dam:**  
**Bryhill Ransom Marquise-ET**  
**GP-83 VV+++**  
2-02 365 27990 4.6 1278 3.7 1048

**4th Dam:**  
**Sully Robust 720-ET**  
**GP-83-CAN VG-MS**  
2-01 365 33360 4.0 1325 3.4 1140  
4-00 353 33100 3.6 1190 3.5 1149

**5th Dam:**  
**Sully Planet Manitoba-ET**  
**VG-85-CAN DOM**  
4-01 365 43669 3.5 1565 3.2 1402

**6th Dam:**  
**Sully Shottle May-ET**  
**EX-90 EEEEE DOM**  
5-04 365 38970 3.5 1354 3.1 1226  
**\*Former #1 GTPI & GLPI cow**

**7th Dam:**  
**Ms Sully Oman Muetze-ET**  
**EX-90 EEEV DOM**  
4-08 365 33860 3.4 1164 3.4 1150  
Lifetime 176480 3.7 6536 3.5 6110

**8th Dam:**  
**Johnan Marshall Mint**  
**VG-85, VG-MS**  
2-02 365 31030 3.1 961 3.0 941

**9th Dam:**  
**Poly-Kow Durham Mincy-ET**  
**VG-88 VG-MS**  
3-03 365 31780 3.0 951 3.0 968

**10th Dam: Poly-Kow Rudolph Mink-ET**  
**VG-85, VG-MS DOM**  
4-08 365 30700 3.4 1053 3.2 972

**11th thru 15th Dams all VG or EX**

~More Holstein Fun in the Sun-Lido Edition~



**Eildon-Tweed Sil Wila 2-ET VG-86 +U+UU**

2-00 352 34710 3.5 1232 3.0 1052

(Dam of Lots 17A & 167B)

**\*Selling buyer's choice  
of Lots 17A & 17B**

*Eildon Tweed Farm, LLC*

1253 Eastern Ave.

Amsterdam, NY 12010

518-882-6684

**LOT 17A**

**Eildon-Tweed Agr Wila 2G-ET**

3146995451 99%RHA-I

Born 11/21/17 1/18 PTA +2855GTPI

+1152M +.17% +89F +.06% +52P

+989NMS +10.4PL +3.0DPR 2.69SCS

+2.04T +2.52UDC +1.99FLC

+200FE +3.3FI +2.5LIV 7.8%SCE

+1026CMS

**LOT 17B**

**Eildon-Tweed Agr Wila 2F-ET**

3146995437 99%RHA-I

Born 11/18/17 1/18 PTA +2829GTPI

+1080M +.15% +81F +.08% +56P

+932NMS +9.4PL +2.5DPR 2.67SCS

+2.25T +2.71UDC +2.14FLC

+193FE +2.9FI +.9LIV 7.5%SCE

**Mr Rubi-Agronaut 73287-ET**

3132198315 12/17 PTA +2804GTPI

+382M +.23% +79F +.09% +36P

+913NMS +10.2PL +4.4DPR 2.59SCS

+1.86T +2.32UDC +2.42FLC 77%R

Rubicon X Shotgun

**Eildon-Tweed Sil Wila 2-ET**

**2-10 VG-86 +V+VV 3127778267**

12/17 PTA +2581GTPI +1508M +67F

+57P +745NMS +7.1PL +.1DPR

+2.24T +2.50UDC +1.43FLC

2-00 352 34710 3.5 1232 3.0 1052

-Recently fresh w/ 2nd calf, milking

115 lbs/day & scored at 10 days fresh!

Sire: Seagull-Bay Silver-ET

(Pictured above)

**\*Daughter sold for \$54,000 in Nat'l  
Convention Sale 2017**

**2nd Dam:**

**Eildon-Tweed SSR Wila-ET**

**VG-85 VE+++**

2-01 301 30670 2.9 898 3.1 959

**3rd Dam:**

**Eildon-Tweed BK Wilda-ET**

**VG-87 VV+VV**

1-10 332 33070 4.1 1345 3.4 1128

2-10 365 35760 3.8 1354 3.5 1257

**4th Dam:**

**Eildon-Tweed Explode Will**

**GP-82 +VG++**

1-08 365 33290 3.5 1150 3.2 1077

**5th Dam:**

**Eildon-Tweed Potter Will**

**VG-86 VVVVV**

3-03 365 36150 4.0 1473 3.5 1296

4-10 365 40230 4.3 1271 3.3 1345

Lifetime 117570 4.1 4820 3.4 3973

~More Holstein Fun in the Sun-Lido Edition~



### AIJA Supersire Makea GP-83-CAN

2-11 365 32712 4.3 1391 3.3 1073

(2nd Dam of Lot 18)

## LOT 18

### AOT Pizazz Mirabel-ET

3141135119 99%RHA-I  
Born 11/10/17 12/17 PTA +2856GTPI  
+1971M +.02% +82F +.01% +62P  
+955NMS +9.1PL +2.9DPR 2.95SCS  
+2.31T +2.60UDC +2.08FLC  
+192FE +3.3FI +1.9LIV 5.7%SCE

**#1 GTPI Pizazz daughter!**

**\*Full brother is +2829GTPI**

**\*Imax brother is +2822GTPI & going to Semex**

**\*Full sister is +2807GTPI**

### AOT Genetics

c/o Tom Kugler & David King

28 Coons Rd

Valley Falls, NY 12185

518-366-3901

### S-S-I Modesty Pizazz-ET

3131003449 12/17 PTA +2859GTPI  
+1748M +.00% +68F +.05% +65P  
+948NMS +9.3PL +3.6DPR 2.89SCS  
+2.36T +2.50UDC +2.46FLC 75%R  
Modesty X VG-85 Balisto

### MsRansom-Rail Rubi Mabel-ET

3131713639 12/17 PTA +2720GTPI  
+1576M +96F +52P +863NMS +7.6PL  
+2.3DPR +1.73T +1.90UDC +1.96FLC  
-Due 5/25/18

Sire: EDG Rubicon-ET

**\*Flushes tremendous- she produced  
130 transferable embryos**

### 2nd Dam: (Pictured above)

AIJA Supersire Makea  
GP-83-CAN

2-11 365 32712 4.3 1391 3.3 1073

**\*3 daus. sold for \$323,000 total**

### 3rd Dam:

AIJA Man O Man Naomi  
VG-85-CAN

3-04 365 34961 4.1 1448 3.4 1202

5-01 263 28029 4.4 1221 3.1 882

### 4th Dam:

AIJA Shottle Jenny  
VG-85-CAN 87-MS

3-03 318 25476 4.0 1021 3.3 849

### 5th Dam:

AIJA Goldwyn Joyfull  
VG-86-CAN 89-MS

5-04 360 26263 4.3 1133 3.3 869

Lifetime 111520 4.1 4557 3.3 3710

### 6th Dam:

AIJA Out Joy  
EX-90-CAN EX-MS

4-03 355 34319 3.3 1138 3.0 1027

5-04 365 37379 3.4 1283 3.0 1113

Lifetime 156597 3.6 5628 3.0 4716



**Ms Moviestar Shaker VG-85 VVV+V DOM**

2-04 26640 3.2 845 3.3 868

(3rd Dam of Lot 19)

**LOT 19**

**Genosource Shaken 38390**

3146202940 99%RHA-I  
Born 11/6/17 1/18 PTA +2854GTPI  
+1506M +.09% +81F +.03% +55P  
+927NM\$ +9.7PL +4.3DPR 2.73SCS  
+2.23T +2.68UDC +1.92FLC  
+173FE +4.3FI +1.0LIV 6.6%SCE

**#3 Windfall dau. of the breed!**

**Genosource**

2188 78th Street  
Blairstown, IA 52209  
Tim Rauen 563-451-5866  
Kyle Demmer 563-451-5376  
Amanda Hauck 570-765-0536

**Butz-Hill Windfall 54771-ET**

3010353518 12/17 PTA +2703GTPI  
+2216M +.06% +99F -.02% +60P  
+889NM\$ +6.5PL +1.6DPR 2.94SCS  
+1.50T +2.24UDC +.91FLC 79%R  
Montross X GP-82 DOM Supersire

**Genosource Delta 33541-ET**

3126777546 12/17 PTA +2585GTPI  
+1324M +49F +55P +726NM\$ +7.8PL  
+3.7DPR +1.61T +2.08UDC +1.16FLC  
-Fresh in November & milking 70 lbs/day  
Sire: Mr Mogul Delta 1427-ET

**2nd Dam:**

**EDG Shaker Jacey 57634-ET**  
**GP-83 +++++**  
2-03 291 22503 3.4 775 3.2 723  
3-03 237 27283 3.4 933 3.0 812 RIP

**3rd Dam: (Pictured above)**

**Ms Moviestar Shaker**  
**VG-85 VVV+V DOM**  
2-04 305 26640 3.2 845 3.3 868

**4th Dam:**

**Brookview-E Moviestar-ET**  
**VG-86 VVV+V GMD**  
2-07 365 31200 4.6 1440 3.4 1069

**5th Dam:**

**Carters-Corner Shot Melody**  
**EX-90 EEEEEY DOM**  
2-03 365 32615 4.6 1496 3.4 1107  
\*\$200,000+ in sales

**6th Dam:**

**Pine-Tree Missy Melinda-ET**  
**VG-85 V+V+V DOM**  
2-00 365 29260 4.5 1322 3.4 996

**7th Dam:**

**Wesswood-HC Rudy Missy-ET**  
**EX-92,3E EEEEE GMD-DOM**  
4-11 365 40880 4.1 1665 3.4 1385  
Lifetime 119610 4.1 4885 3.4 4031  
\*Global Cow of the Year 2014

**8th Dam: Wesswood Elton Mimi**

**EX-90 EEEEE GMD-DOM**  
3-05 365 35380 3.3 1160 3.0 1054

**9th Dam: Wesswood Mandingo Ivy**

**VG-87 VEEVV**  
6-05 365 36330 3.6 1305 2.8 1018  
Lifetime 144060 3.4 4933 2.9 4139

**10th Dam:**

**Wesswood Astro Matt Ester**  
**VG-87 VEEVV GMD-DOM**  
6-08 365 31860 3.5 1125 2.9 921  
Lifetime 140110 3.6 5029 3.0 4158

**11th Dam: Wesswood Bell Claudette**

**VG-87 GMD-DOM**  
8-04 365 38150 3.8 1443 2.8 1064  
Lifetime 280980 3.6 9997 2.9 8092

*~More Holstein Fun in the Sun-Lido Edition~*



**Aardema Dean 3208 VG-86 +U++U**

3-04 365 42300 3.1 1312 2.9 1244

(2nd Dam of Lot 20)

**LOT 20**

**Aardema Modesty 31002-ET**

3139798399 96%RHA-NA  
Born 2/23/17 12/17 PTA +2847GTPI  
+1326M +.12% +82F +.04% +53P  
+988NMS +10.1PL +4.4DPR 2.87SCS  
+1.79T +2.51UDC +1.70FLC  
+185FE +4.3FI 6.2%SCE  
+1013CMS

**\*Ready to flush conv. or IVF now!**

*Double A Dairy*

305 S County Line Rd  
Jerome, ID 83338  
208-644-1504

**Bacon-Hill Pety Modesty-ET**

3013654627 12/17 PTA +2827GTPI  
+1744M +.08% +87F +.02% +59P  
+984NMS +8.6PL +3.2DPR 3.06SCS  
+1.92T +2.57UDC +2.05FLC 79%R  
Pety X VG-85 DOM Supersire

**Aardema Rubicon 17790-ET**

**2-06 GP-80 +GF++** 3127295566  
12/17 PTA +2579GTPI +1329M +66F  
+51P +784NMS +8.5PL +3.0DPR  
+1.25T +1.15UDC +1.27FLC  
1-10 293 23560 3.3 780 3.3 777  
2-09 118 12050 4.7 568 3.7 449 RIP  
Sire: EDG Rubicon-ET

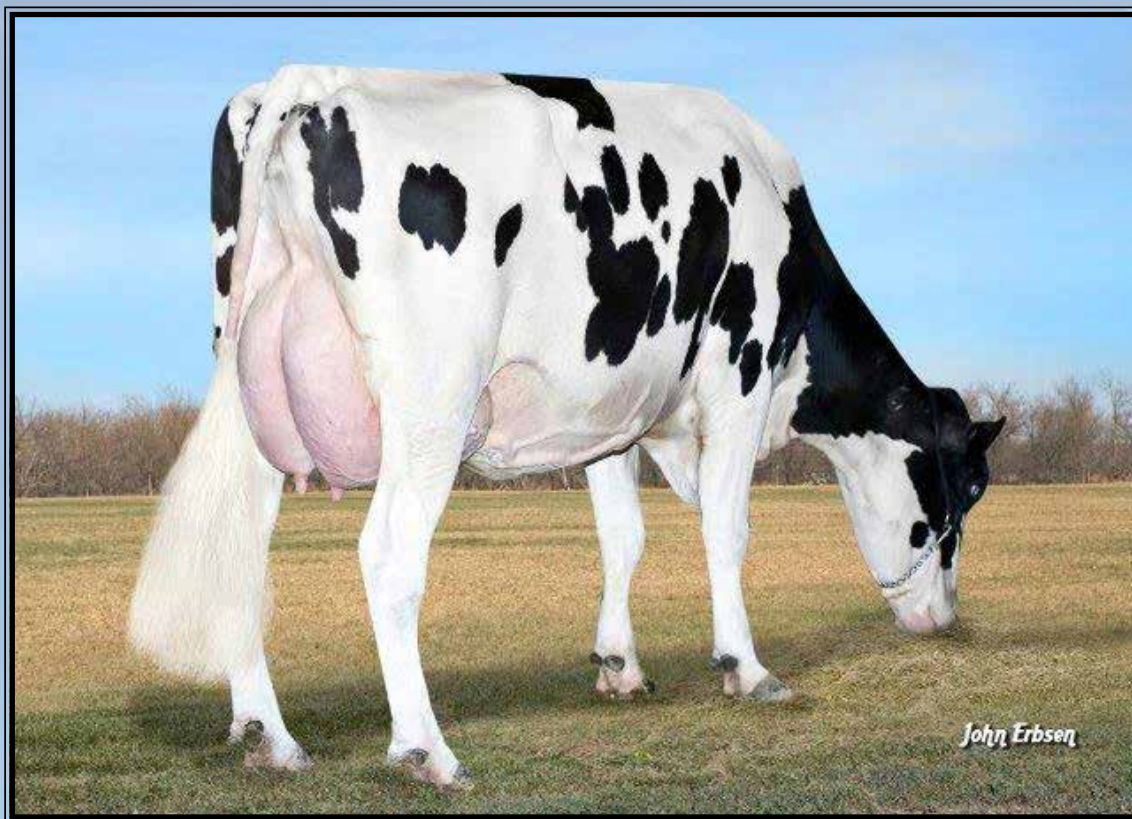
**2nd Dam: (Pictured above)**

**Aardema Dean 3208**

**VG-86 +V++V**

3-04 365 42300 3.1 1312 2.9 1244

Sire: Ronelee Super Dean



**S-S-I Bookem Modesto7269-ET VG-87 UU++U DOM**

3-03 305 25995 3.9 982 3.5 909  
(3rd Dam of Lots 13, 14, 21, 22 & 47)

**LOT 21**

**Pine-Tree 774 Modes 7758-ET**

3145982704 99%RHA-I  
Born 10/30/17 12/17 PTA +2847GTPI  
+1897M -.01% +69F +.03% +65P  
+969NM\$ +10.0PL +3.0DPR 2.94SCS  
+2.21T +2.86UDC +1.98FLC  
+186FE +3.3FI +3.8LIV 7.1%SCE

**LOT 22**

**Pine-Tree 774 Frazz 7630-ET**

3145982576 99%RHA-I  
Born 8/7/17 12/17 PTA +2786GTPI  
+2063M +.05% +90F +.01% +66P  
+976NM\$ +9.9PL +2.8DPR 2.73SCS  
+1.30T +.94UDC +1.12FLC  
+199FE +3.1FI +4.1LIV 7.5%SCE

**\*Ready to IVF soon!**

**Same maternal line as:**  
**Flagship, Jedi & Jett**

**Pine-Tree Dairy**

8586 Benner Rd  
Marshallville, OH 44645  
330-466-8916

**Sire of Lot 21:**

**Bacon-Hill Pety Modesty-ET**  
3013654627 12/17 PTA +2827GTPI  
+1744M +.08% +87F +.02% +59P  
+984NM\$ +8.6PL +3.2DPR 3.06SCS  
+1.92T +2.57UDC +2.05FLC 79%R  
Pety X VG-85 DOM Supersire

**Sire of Lot 22:**

**Melarry Josuper Frazzled-ET**  
74261651 12/17 PTA +2797GTPI  
+2465M +.02% +97F +.00% +73P  
+995NM\$ +9.0PL +1.5DPR 2.66SCS  
+1.26T +1.55UDC +.67FLC 79%R  
Josuper X VG-85 Shotglass

**Dam of Lots 21 & 22:**

**Seagull-Bay My Octavia-ET**  
**2-04 GP-81 G+G++ 3128978122**  
12/17 PTA +2674GTPI +1564M +64F  
+56P +830NM\$ +9.7PL +2.8DPR  
+1.88T +2.08UDC +1.33FLC  
2-01 97 8902 3.8 337 3.0 264 RIP  
-milking 90 lbs/day  
Sire: Ladys-Manor Octoberfest-ET  
\*Made 15 transferable embryos on a  
conv. flush at 90 days fresh

**2nd Dam: (Pictured w/ Lot 13)**  
**S-S-I Moonry Myesha 9071-ET**  
**VG-85 VVV+V DOM**  
2-01 365 33260 4.0 1330 3.5 1152

**3rd Dam: (Pictured above)**  
**S-S-I Bookem Modesto7269-ET**  
**VG-87 VV++V DOM**  
3-03 305 25995 3.8 982 3.5 909

**AI sons include: Mando & Marshman**

**4th Dam:**  
**Roylane Shot Mindy 2079-ET**  
**VG-86 VVVVV DOM**  
2-02 365 34589 4.3 1489 3.3 1148  
**\*Dam of 'Monarch' at Select!**

**5th Dam:**  
**Seagull-Bay Oman Mirror-ET**  
**VG-86 +VVVV DOM**  
3-00 365 36430 4.4 1606 3.6 1304  
**\*Dam of sires: Robust, Bob & Punch**

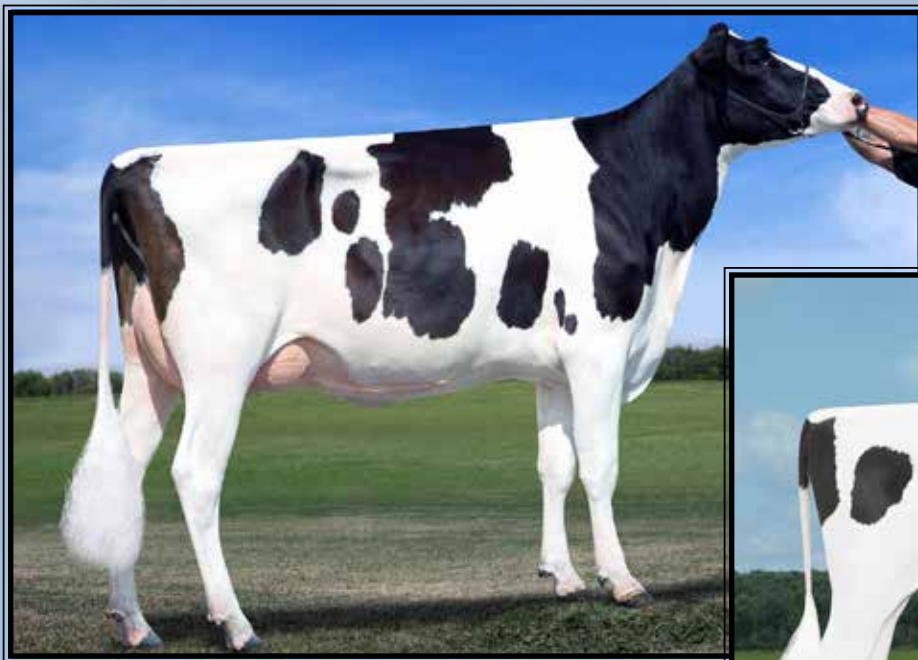
**6th Dam:**  
**Seagull-Bay Manat Mirage-ET**  
**EX-90 VE+V GMD-DOM**  
3-06 365 35900 3.8 1364 3.4 1229

**7th Dam:**  
**Lynmead Celsius Minnow-ET \*TV**  
**EX-91,2E EEEVV GMD-DOM**  
4-10 365 49550 3.7 1857 3.2 1592  
Lifetime 255910 3.7 9446 3.3 8481

**8th Dam: CMV Melwood Mindy-ET**  
**VG-85 VE+V GMD-DOM**  
4-01 365 36341 3.6 1305 3.4 1239

**9th Dam: Briarpatch-R Misty-ET**  
**VG-85 +E+V GMD-DOM**  
2-02 365 24680 4.8 1176 3.1 776

**10th Dam: Rilara Mars Las Ravena**  
**EX-91 EVEE GMD-DOM**  
4-03 305 29030 4.6 1329



**Sonray-Acres Soc Observr Vi  
VG-88-CAN EX-MS**  
4-10 365 45344 4.2 1905 3.2 1444  
(4th Dam of Lot 23)



**Simple-Dreams Rockstar-ET**  
(Dam of Lot 23)

## LOT 23

### Peak Rkstr Imax 80791-ET

3145229954 99%RHA-I  
Born 11/3/17 1/18 PTA +2812GTPI  
+1774M +.08% +89F +.02% +60P  
+975NMS +9.5PL +1.5DPR 2.72SCS  
+2.09T +2.25UDC +1.62FLC  
+196FE +1.8FI +3.1LIV 6.5%SCE

\*Housed at Budjon, Lomira, WI

### Peak Genetics

N8350 High Rd  
Watertown, WI 53094

contact: Scott Culbertson 507-923-1881

### Silverridge V Imax-ET

12264620C 12/17 PTA +2757GTPI  
+1704M +.07% +83F +.01% +54P  
+858NMS +7.1PL +2.3DPR 2.92SCS  
+2.41T +2.83UDC +1.75FLC 78%R  
AltaSpring X Mogul

### Simple-Dreams Rockstar-ET

3136725760 12/17 PTA +2808GTPI  
+1896M +94F +65P +978NMS +9.6PL  
+2.2DPR +1.75T +1.64UDC +.87FLC  
Sire: Seagull-Bay Supersire-ET  
(Pictured above)

\*Phenomenal flush record!

### 2nd Dam:

Ri-Val-Re Money Maker-ET  
GP-82 ++GG+

### 3rd Dam:

Sonray-Acres Mcthn Vi-ET  
GP-84 +V++V

### 4th Dam: (Pictured above)

Sonray-Acres Soc Observr Vi  
VG-88-CAN EX-MS  
4-10 365 45344 4.2 1905 3.2 1444

### 5th Dam:

Sonray-Acres Shot Socrts Pi  
VG-86 VEFV+  
5-02 365 26300 3.3 869 3.1 804  
Lifetime 100370 3.6 3638 3.2 3247

### 6th Dam:

Sonray-Acres R Shott Star  
EX-92,2E EEEEE DOM  
6-02 365 28700 4.3 1240 3.4 983  
Lifetime 184500 4.4 8136 3.5 6378

### 7th Dam:

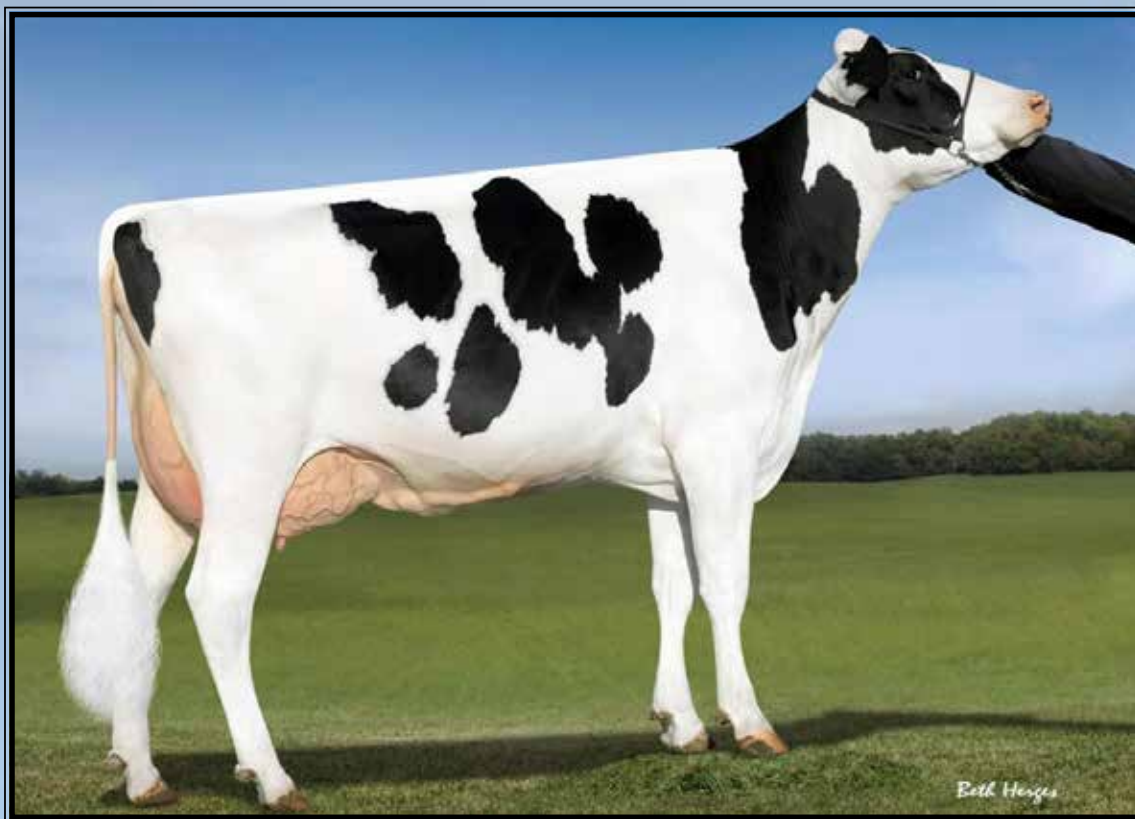
Sonray-Acres Air Rudlf Stew  
VG-85 V+++V DOM  
3-05 305 26580 3.6 947 3.1 815

### 8th Dam:

Sonray-Acres BS Airln Helen  
VG-85 +VGVV  
3-01 308 24010 3.9 934 3.3 798

### 9th Dam:

Sonray-Acres Bstar Halina  
VG-87 GEVGE  
6-00 328 23980 4.1 987 3.2 765  
Lifetime 115900 4.5 5165 3.3 3822



**OCD Supersire 9882-ET VG-86 UU++V DOM**

2-01 365 31870 4.1 1310 3.4 1083

(2nd Dam of Lot 6, 11, 12 & 24)

**LOT 24**

**Pine-Tree 7019 Duke 7772-ET**

3145982718 99%RHA-I

Born 11/10/17 1/18 PTA +2842GTPI

+2014M +.03% +82F +.06% +76P

+932NMS +9.3PL +3.0DPR 2.81SCS

+2.15T +1.97UDC +1.04FLC

+210FE +3.3FI +.8LIV 9.2%SCE

**Maternal brother: +2945G +1088NMS!**

**Pine-Tree Dairy**

8586 Benner Rd

Marshallville, OH 44645

330-466-8916

**S-S-I Montross Duke-ET**

3125201993 12/17 PTA +2771GTPI

+2645M +.05% +112F +.02% +85P

+881NMS +5.2PL +.4DPR 2.93SCS

+2.05T +1.78UDC +.88FLC 80%R

Montross X VG-85 DOM Supersire

**Pine-Tree 9882 Prof 7019-ET**

3132116871 12/17 PTA +2796GTPI

+1497M +69F +60P +926NMS +10.8PL

+4.9DPR +1.58T +1.73UDC +.88FLC

-Due 8/2/18

Sire: S-S-I Partyrock Profit-ET

**Maternal brothers include:**

**7HO13771 Kennedy +2862GTPI**

**7HO13770 Hoover +2793GTPI**

**7HO12899 Slam dunk +2756GTPI**

**7HO12897 Samuri +2740GTPI**

**2nd Dam: (Pictured above)**

**OCD Supersire 9882-ET**

**VG-86 VV++V DOM**

2-01 365 31870 4.1 1310 3.4 1083

**\*Multiple active AI sons**

**\*Sold for \$270,000 in World Classic 2016**

**3rd Dam:**

**OCD Robust Shimmer-ET**

**EX-90 EEVVE DOM**

2-03 365 34350 3.5 1200 3.2 1086

**4th Dam:**

**Ammon-Peachey Shana-ET**

**VG-87-CAN as 2yr-old DOM**

2-02 365 34191 4.8 1653 3.4 1164

**FULL sister: Ammon-Peachey Shauna EX-91**

**-dam of Supersire, Headliner, etc.**

**5th Dam:**

**Pine-Tree Martha Sheen-ET**

**VG-86 VV+VV DOM**

1-11 365 31210 4.2 1305 3.1 968

**6th Dam: Pine-Tree Missy Martha-ET**

**VG-86 VVV+V DOM**

2-02 365 34730 3.6 1266 3.1 1070

**7th Dam:**

**Wesswood-HC Rudy Missy-ET**

**EX-92.3E EEEEE GMD-DOM**

4-11 365 40880 4.1 1665 3.4 1385

Lifetime 119610 4.1 4885 3.4 4031

**\*Global Cow of the Year 2014**

**8th Dam: Wesswood Elton Mimi**

**EX-90 EEEEE GMD-DOM**

3-05 365 35380 3.3 1160 3.0 1054

**9th Dam: Wesswood Mandingo Ivy**

**VG-87 VEEVV**

6-05 365 36330 3.6 1305 2.8 1018

Lifetime 144060 3.4 4933 2.9 4139

**10th Dam: Wesswood Astro Matt Ester**

**VG-87 VEVV GMD-DOM**

6-08 365 31860 3.5 1125 2.9 921

Lifetime 140110 3.6 5029 3.0 4158

**11th Dam: Wesswood Bell Claudette**

**VG-87 GMD-DOM**

8-04 365 38150 3.8 1443 2.8 1064

Lifetime 280980 3.6 9997 2.9 8092



~More Holstein Fun in the Sun-Lido Edition~



### **Pine-Tree Ramos Alexia-ET EX-91,3E VEVEE**

Lifetime 170890 4.5 7742 3.5 5959

(4th Dam of Lot 25)

## **LOT 25**

### **Pine-Tree 6809 Mode 7650-ET**

3145982596 99%RHA-I

Born 8/17/17 12/17 PTA +2821GTPI

+1473M +.10% +82F +.04% +55P

+942NMS +8.4PL +3.1DPR 2.86SCS

+2.52T +2.80UDC +1.60FLC

+190FE +2.9FI +3.9LIV 6.9%SCE

**\*Ready to IVF soon!**

#### **Pine-Tree Dairy**

8586 Benner Rd

Marshallville, OH 44645

330-466-8916

#### **Bacon-Hill Pety Modesty-ET**

3013654627 12/17 PTA +2827GTPI

+1744M +.08% +87F +.02% +59P

+984NMS +8.6PL +3.2DPR 3.06SCS

+1.92T +2.57UDC +2.05FLC 79%R

Pety X VG-85 DOM Supersire

#### **Pine-Tree 5959 Draco 6809**

3132116661 12/17 PTA +2633GTPI

+1809M +63F +54P +786NMS +8.8PL

+2.7DPR +2.05T +2.18UDC +.27FLC

-Fresh 12/3/17, milking 100 lbs/day

Sire: Mr Coin Draco 15006-ET

#### **2nd Dam:**

**Pine-Tree 5133 Shaw 5959**

**VG-85 VVVV+**

1-09 365 31590 4.0 1253 3.1 966

2-11 365 39037 4.5 1736 3.1 1241

#### **3rd Dam:**

**Pine-Tree 4075 Dobe 5133-ET**

3-00 98 6140 4.4 268 3.6 220

#### **4th Dam: (Pictured above)**

**Pine-Tree Ramos Alexia-ET**

**EX-91,3E VEVEE**

4-02 324 29200 4.5 1317 3.5 1024

Lifetime 170890 4.5 7742 3.5 5959

\*Due 4/14/18 w/ 7th calf!

#### **5th Dam:**

**Mtn-View-S Boliv Alexa-ET**

**EX-91,2E EEVEV DOM**

5-05 324 35744 3.6 1304 2.9 1030

Lifetime 168660 3.9 6608 3.2 3479

#### **6th Dam: Jafral Zack Abby-ET**

**VG-88 VEEVV GMD-DOM**

2-04 365 38110 4.2 1597 3.5 1341

#### **7th Dam: Jafral Prelude Prissy**

**VG-86 VV+VV GMD-DOM**

1-11 365 36629 3.7 1365 3.7 1355

#### **8th Dam: Jafral Wister Raven-ET**

**VG-88 VEEVV GMD-DOM**

3-09 365 40663 4.1 1682 3.6 1452

#### **9th Dam: Briarpatch-R Raven-ET**

**VG-87 VE+E GMD-DOM**

5-00 365 40860 3.9 1609 3.6 1470

#### **10th Dam: Rilara Mars Las Ravena**

**EX-91 EVEE GMD-DOM**

4-03 305 29030 4.6 1330

#### **11th Dam:**

**Rilara Haven Charming Las-TW**

**VG-87 VEVV GMD-DOM**

6-10 365 30490 3.4 1029 3.1 935

Lifetime 164400 3.4 5651 3.1 2187

#### **12th Dam:**

**Rag Apple Locust-Grove Charm**

**VG-86 +EVV GMD-DOM**

5-02 365 26320 3.6 948



**IHG Jacey Grace-ET VG-85-CAN**

2-01 proj. 305 25417 4.3 1089 3.5 886  
(2nd Dam of Lot 26)

**LOT 26**

**Westcoast Scorpion Grc4004 6104**

12843271C 99%RHA-I  
Born 8/24/17 12/17 PTA +2816GTPI  
+1137M +.13% +77F +.06% +53P  
+887NM\$ +9.1PL +4.2DPR 2.61SCS  
+2.22T +2.19UDC +2.01FLC  
+172FE +4.1FI +.9LIV 7.3%SCE

**\*Ready to IVF soon!**

**\*Housed in Ponoka, Alberta**

**-Westcoast will truck for free to Ontario if needed for easier pickup.**

**Westcoast Holsteins**

47749 Prairie Central Rd  
Chilliwack, BC V2P 6H3 CANADA  
604-792-1084

**Westcoast Scorpion-ET**

12283253C 12/17 PTA +2629GTPI  
+1024M +.06% +53F +.06% +47P  
+755NM\$ +7.9PL +2.9DPR 2.76SCS  
+2.05T +2.77UDC +1.54FLC 77%R  
Muscadet X VG-85 AltaOak

**Westcoast Aftbrnr Grace 4004**

12371700C 12/17 PTA +2648GTPI  
+698M +65F +47P +739NM\$ +7.6PL  
+3.0DPR +2.18T +1.59UDC +2.00FLC  
-Due 4/12/18  
Sire: Sandy-Valley Afterburner-ET

**2nd Dam: (Pictured above)  
IHG Jacey Grace-ET  
VG-85-CAN**

2-01 365 29180 4.3 1263 3.6 1041

**3rd Dam: (Pictured w/ Lot 31)  
Farnear-TBR-BH Georgia-ET  
VG-87 VVGVV DOM**

2-02 305 28000 4.3 1200 3.2 904

**4th Dam:  
B-Enterprise Super Gigi-ET  
VG-88 EEEVV DOM**

2-03 365 38600 3.3 1287 3.2 1219  
4-02 350 41980 2.8 1187 3.0 1262  
Lifetime 100920 3.2 3289 3.2 3202

**5th Dam:  
Brigeen Outside Gigi  
EX-90,2E EEEEE GMD-DOM**  
3-07 365 40750 3.8 1565 3.1 1260  
5-08 365 60160 4.2 2522 3.1 1880  
Lifetime 167080 4.0 6600 3.2 5265

**6th Dam:  
Brigeen Aer Gwyneth  
EX-93,2E EEEEE GMD-DOM**  
4-09 365 47140 3.0 1422 2.8 1327  
6-05 365 48150 3.3 1576 2.8 1371  
Lifetime 219870 3.3 7288 2.9 6372

**7th Dam:  
Brigeen Integrity Gwen-ET  
VG-86 GMD**  
3-07 365 39520 3.8 1518 2.6 1027  
Lifetime 122980 3.6 4368 2.7 3303

**8th Dam: Roylane Leadman Glory  
VG-89 EEVVE GMD-DOM**  
2-00 365 30880 3.6 1127 2.9 893

**9th Dam: Western-Cascade Mark Bella  
EX-91 EEEV GMD-DOM**  
3-06 365 36360 3.7 1354 2.8 1022

**10th Dam: Western-Cascade Bell Glory  
EX-90,2E VEEV GMD-DOM**  
7-10 305 34840 3.3 1155 2.8 971  
Lifetime 139210 3.6 5018 2.9 4013



**Larcrest Collect-ET VG-87 UUUUU**

2-01 305 27090 4.1 1101 3.5 949

(2nd Dam of Lot 27)

**LOT 27**

**Heifer**

3144506103- pending

Born 10/15/17 1/18 PTA +2816GTPI

+2036M +.07% +95F +.06% +76P

+929NMS +7.4PL +2.1DPR 2.82SCS

+1.92T +1.56UDC +1.13FLC

+223FE +2.7FI -.1LIV 7.8%SCE

**Eric Lang**

1842 400th Ave.

Brooklyn, IA 52211

641-990-6977

**OCD Spring Samuri-ET**

3133106322 12/17 PTA +2740GTPI

+1159M +.16% +88F +.07% +56P

+865NMS +7.7PL +3.5DPR 2.85SCS

+1.59T +1.92UDC +.84FLC 78%R

Spring X VG-86 DOM Supersire

**Jemar-LLC Jedi Coleen-ET**

3127066593 12/17 PTA +2733GTPI

+2081M +70F +76P +836NMS +7.0PL

+1.8DPR +2.30T +1.46UDC +1.48FLC

-Due 7/28/18

Sire: SD-S-I Montross Jedi-ET

**2nd Dam (Pictured above)**

**Larcrest Collect-ET  
VG-87 VVVVV**

2-01 305 27090 4.1 1101 3.5 949

**3rd Dam:**

**Larcrest Chenoa-ETS  
VG-87 VVVVV DOM**

2-04 365 35930 4.1 1487 3.5 1259

**4th Dam:**

**Larcrest Crimson-ET  
EX-94,3E EEEEE GMD-DOM**

5-02 365 46390 5.3 2448 3.7 1708

Lifetime 135610 5.0 6727 3.8 5180

Sire: Ramos

**5th Dam:**

**Larcrest Cosmopolitan  
VG-87 E+VVV DOM**

2-04 365 30930 4.1 1261 3.6 1119

Sire: Picston Shottle-ET

**6th Dam:**

**Larcrest Oside Champagne-TW  
VG-87 VVVEV**

2-03 365 29110 4.5 1322 3.7 1077

**7th Dam:**

**Larcrest Juror Chanel  
EX-93,3E EEEEE GMD-DOM**

9-00 365 48460 4.0 1943 3.4 1648

-Over 250,000 lifetime

**8th Dam:**

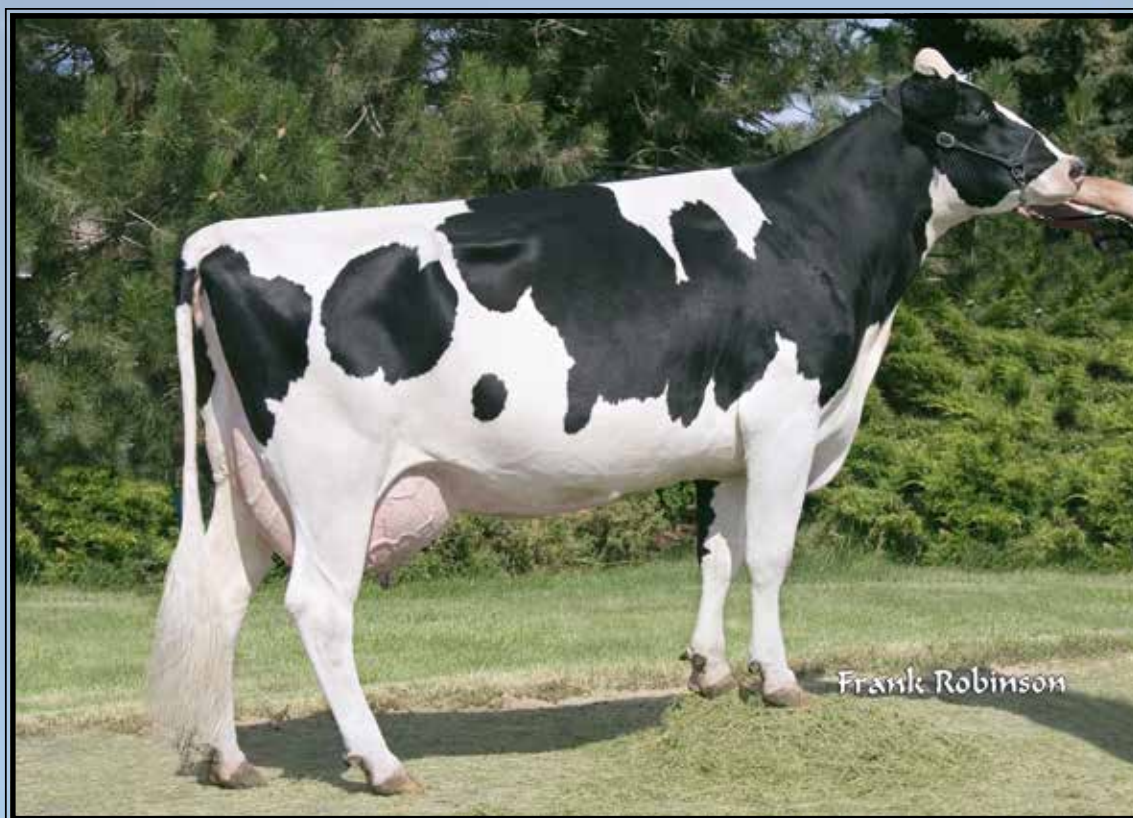
**Larcrest Lindy Chandra VG-85**

2-05 365 20896 4.8 993 3.8 803

**9th Dam:**

**Larcrest Inspiration Carly  
VG-87 EEVVV**

3-05 305 21800 4.5 973 3.3 802



**Seagull-Bay Oman Mirror-ET VG-86 +UUUU DOM**

3-00 365 36430 4.4 1606 3.6 1304

(3rd Dam of Lot 28)

**LOT 28**

**Pine-Tree 6586 Fraz 7683-ET**

3145982629 99%RHA-I  
Born 9/2/17 12/17 PTA +2814GTPI  
+1525M +.13% +94F +.04% +58P  
+962NMS +10.0PL +4.3DPR 2.89SCS  
+1.51T +1.75UDC +.81FLC  
+197FE +4.5FI +2.5LIV 8.0%SCE

\*Ready to IVF soon!  
\*Unique pedigree- Mogul free!

**Pine-Tree Dairy**

8586 Benner Rd  
Marshallville, OH 44645  
330-466-8916

**Melarry Josuper Frazzled-ET**

74261651 12/17 PTA +2797GTPI  
+2465M +.02% +97F +.00% +73P  
+995NMS +9.0PL +1.5DPR 2.66SCS  
+1.26T +1.55UDC +.67FLC 79%R  
Josuper X VG-85 Shotgun

**Green-Banks Damaris 6568-ET**

**2-01 GP-81 G+F++ 3131147465**  
12/17 PTA +2669GTPI +1277M +76F  
+58P +818NMS +8.3PL +1.9DPR  
+2.04T +1.97UDC +1.89FLC  
1-11 48 3783 5.0 189 3.3 123 RIP  
-milking 97 lbs/day  
Sire: S-S-I Sterling Damaris-ET

**2nd Dam:**

**Triplecrown Tango 632-ET**  
**VG-85 VVV+V**  
2-00 309 31580 3.4 1073 3.1 980

**3rd Dam: (Pictured above)**

**Seagull-Bay Oman Mirror-ET**  
**VG-86 +UUUU DOM**  
3-00 365 36430 4.4 1606 3.6 1304

**\*Dam of popular AI sires:**  
**7H10524 Robust & 7H11207 Punch**

**4th Dam:**

**Seagull-Bay Manat Mirage-ET**  
**EX-90 VEVVE GMD-DOM**  
3-06 365 35900 3.8 1364 3.4 1229

**5th Dam:**

**Lynmead Celsius Minnow-ET \*TV**  
**EX-91,2E EEVVV GMD-DOM**  
4-10 365 49550 3.7 1857 3.2 1592  
Lifetime 255910 3.7 9446 3.3 8481

**6th Dam:**

**CMV Melwood Mindy-ET**  
**VG-85 VE+V GMD-DOM**  
4-01 365 36341 3.6 1305 3.4 1239

**7th Dam:**

**Briarpatch-R Misty-ET**  
**VG-85 +E+V GMD-DOM**  
2-02 365 24680 4.8 1176 3.1 776

**8th Dam:**

**Rilara Mars Las Ravena**  
**EX-91 EEEE GMD-DOM**  
4-03 305 29030 4.6 1329

~More Holstein Fun in the Sun-Lido Edition~



## Siemers Winbrk Rozanne-ET EX-93 EEVVE GMD-DOM

4-10 330 47480 3.7 1734 3.3 4582

(3rd Dam of Lot 29)

## LOT 29

### Siemers Samuri Roz 28253-ET

3144882765 99%RHA-I

Born 9/19/17 12/17 PTA +2813GTPI

+1736M +.03% +73F +.01% +55P

+913NMS +9.9PL +5.9DPR 2.78SCS

+1.56T +2.10UDC +.90FLC

+162FE +6.0FI +1.0LIV 7.4%SCE

\*Ready to IVF soon!

### Siemers Holstein Farms, Inc.

14421 Mineral Spring Rd

Newton, WI 53063

920-693-3600

### OCD Spring Samuri-ET

3133106322 12/17 PTA +2740GTPI

+1159M +.16% +88F +.07% +56P

+865NMS +7.7PL +3.5DPR 2.85SCS

+1.59T +1.92UDC +.84FLC 78%R

Spring X VG-86 DOM Supersire

### Siemers Delta S-Roz-Ann-ET

2-04 GP-83 ++++V 3130920358

12/17 PTA +2803GTPI +1929M +67F

+57P +935NMS +10.8PL +4.2DPR

+2.12T +2.33UDC +1.04FLC

2-00 148 10516 4.7 489 3.3 350 RIP

Sire: Mr Mogul Delta 1427-ET

#### 2nd Dam:

Siemers S-Sire Roz-Anne-ET

VG-85 VV++V DOM

1-11 365 46740 3.4 1567 3.2 1511

#### 3rd Dam: (Pictured above)

Siemers Windbk Rozanne-ET

EX-93 EEVVE GMD-DOM

3-04 365 45420 3.7 1669 3.4 1546

4-10 330 47480 3.7 1734 3.2 1518

Lifetime 139390 3.7 5122 3.3 4582

#### 4th Dam:

Cherry Crest Manoman Roz-ET

EX-91 EEVVE

4-08 365 54370 2.9 1562 3.1 1701

Lifetime 125710 3.1 3842 3.1 3953

#### 5th Dam:

Whittier-Farms He Rebeca-ET

EX-91,2E-CAN EX-MS

5-05 359 35825 3.6 1283 2.9 1045

Lifetime 150881 3.8 5688 3.0 4570

#### 6th Dam:

Whittier-Farms Outside Roz

EX-95,2E EEEEE DOM

4-08 365 37899 3.8 1453 3.4 1301

Lifetime 140660 4.0 5688 3.4 4843

#### 7th Dam:

Whittier-Farms James Raozlyn

EX-93,2E EEVVE

2-03 365 27430 3.4 924 3.3 905

Lifetime 115120 3.4 3895 3.3 3842

#### 8th Dam:

Whittier-Farms Leader Rosie

EX-91,2E EEEVE

8-00 365 31389 3.0 946 2.9 906

Lifetime 227801 3.0 6803 3.1 6995

#### 9th Dam: Whittier-Farms Lindy Rose

EX-90 EVVVE GMD

5-02 365 30170 4.3 1306 3.5 3770

Lifetime 108650 3.8 4141 3.5 3770

#### 10th Dam:

Whittier-Farms Flip Rosalyn

VG-88 V+VVE

7-09 365 29930 3.7 1095 3.3 991

Lifetime 168540 3.8 6321 3.4 5666



**Nordic-Ridge Supers Legacy VG-87 UEVVU**

2-04 365 35910 4.2 1522 3.4 1236

(2nd Dam of Lot 30)

**LOT 30**

**Precision Brbn Lightup-ET**

3141563060 100%RHA-NA  
Born 9/10/17 12/17 PTA +2786GTPI  
+3103M -.14% +78F -.05% +78P  
+830NM\$ +6.1PL +1.8DPR 2.92SCS  
+2.99T +2.37UDC +1.87FLC  
+187FE +2.2FI -.7LIV 8.9%SCE

**#11 PTA milk heifer of the breed & she is the highest type of these 11!**

**\*Ready to IVF soon!**

**\*Housed at Precision Genetics, WI**

**Riverview Farm**

4236 Co. Hwy 18  
Delhi, NY 13753  
607-435-0792

**Wa-Del ABS Bourbon-ET**

3014558977 12/17 PTA +2741GTPI  
+2253M -.05% +70F +.01% +71P  
+816NM\$ +6.4PL +3.1DPR 2.79SCS  
+2.12T +2.07UDC +1.30FLC 79%R  
Montross X VG-85 Massey

**Precision Delta Luxury-ET**

74117583 8/17 PTA +2664GTPI  
+1899M +91F +58P +786NM\$ +5.9PL  
+.4DPR +2.54T +2.31UDC +1.47FLC  
-Recently fresh & looks very nice!  
Sire: Mr Mogul Delta 1427-ET

**2nd Dam: (Pictured above)**

**Nordic-Ridge Supers Legacy VG-87 VEVVV**

2-04 365 35910 4.2 1522 3.4 1236

**3rd Dam:**

**Nordic-Ridge Bolton Lexi EX-90,2E EEVVE DOM**

3-04 365 33730 3.6 1207 3.3 1115  
4-07 365 35850 3.8 1352 3.2 1139  
5-11 365 35690 3.4 1220 3.1 1115  
Lifetime 139970 3.7 5139 3.2 4479

**4th Dam:**

**Nordic-Ridge Champion Lexus VG-87 EEVVV**

3-10 365 31690 3.4 1091 3.3 1034  
5-02 365 40610 3.2 1305 3.3 1329  
6-04 365 39740 3.5 1385 3.3 1192  
Lifetime 160930 3.5 5602 3.3 5331

**5th Dam:**

**Ebe-Tide Lizzie VG-87 VVEVV**

5-06 365 25360 4.1 1052 3.5 882

**6th Dam:**

**Maplecett Ebe-Tide Libby EX-92,3E EEEEE**

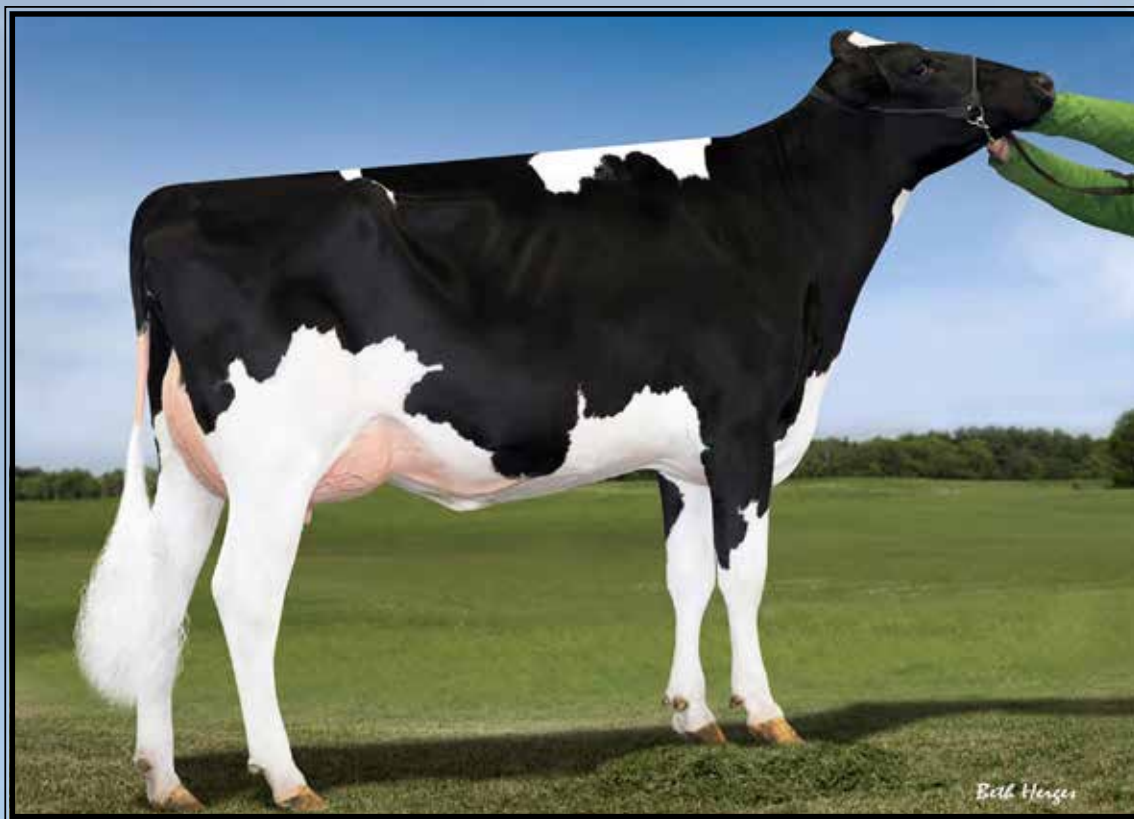
9-11 365 38370 3.7 1418 3.2 1233  
Lifetime 222910 3.8 8489 3.4 7576

**7th Dam:**

**Maplecett Lila Charles EX-90 EEVVV**

5-09 336 34960 3.7 1288 3.3 1149  
Lifetime 138030 3.8 5283 3.2 4445

~More Holstein Fun in the Sun-Lido Edition~



**Farnear-TBR-BH Georgia-ET VG-87 UUGVV DOM**

2-02 305 28000 4.3 1200 3.2 904

(3rd Dam of Lot 31)

**LOT 31**

**Misty-Moor Bourbon Gina-ET**

3144934013 99%RHA-I  
Born 9/25/17 12/17 PTA +2812GTPI  
+1400M +.10% +79F +.07% +62P  
+833NMS +6.6PL +3.2DPR 2.73SCS  
+2.70T +2.46UDC +2.23FLC  
+178FE +3.1FI +.1LIV 8.2%SCE

\*Embryo interest from Japan with  
GenElite. Will be on early March  
inspection trip.

**Misty-Moor Holsteins**

946A Fleetwood-Lyons Rd  
Fleetwood, PA 19522

610-944-6605

**Wa-Del ABS Bourbon-ET**

3014558977 12/17 PTA +2741GTPI  
+2253M -.05% +70F +.01% +71P  
+816NMS +6.4PL +3.1DPR 2.79SCS  
+2.12T +2.07UDC +1.30FLC 79%R  
Montross X VG-85 Massey

**Endco Sil G57780 23137-ET**

3133063330 12/17 PTA +2591GTPI  
+1288M +70F +55P +654NMS +4.2PL  
+1.0DPR +2.50T +2.50UDC +2.57FLC  
-Fresh 1/16/18  
Sire: Seagull-Bay Silver-ET

**2nd Dam:**

IHG Jacey Georgia 57780-ET  
GP-83 VV+G+

**3rd Dam: (Pictured above)**

Farnear-TBR-BH Georgia-ET

VG-87 VUGVV DOM

2-02 305 28000 4.3 1200 3.2 904

**4th Dam:**

B-Enterprise Super Gigi-ET

VG-88 EEEVV DOM

2-03 365 38600 3.3 1287 3.2 1219

4-02 350 41980 2.8 1187 3.0 1262

Lifetime 100920 3.2 3289 3.2 3202

**5th Dam:**

Brigean Outside Gigi

EX-90,2E EEEEEV GMD-DOM

3-07 365 40750 3.8 1565 3.1 1260

5-08 365 60160 4.2 2522 3.1 1880

Lifetime 167080 4.0 6600 3.2 5265

**6th Dam:**

Brigean Aer Gwyneth

EX-93,2E EEEEEV GMD-DOM

4-09 365 47140 3.0 1422 2.8 1327

6-05 365 48150 3.3 1576 2.8 1371

Lifetime 219870 3.3 7288 2.9 6372

**7th Dam:**

Brigean Integrity Gwen-ET

VG-86 GMD

3-07 365 39520 3.8 1518 2.6 1027

Lifetime 122980 3.6 4368 2.7 3303

**8th Dam: Roylane Leadman Glory**

VG-89 EEVVE GMD-DOM

2-00 365 30880 3.6 1127 2.9 893

**9th Dam: Western-Cascade Mark Bella**

EX-91 EEEV GMD-DOM

3-06 365 36360 3.7 1354 2.8 1022

**10th Dam: Western-Cascade Bell Glory**

EX-90,2E VEEV GMD-DOM

7-10 305 34840 3.3 1155 2.8 971

Lifetime 139210 3.6 5018 2.9 4013



**Co-Vista Delta Lizzy VG-85 +U++U**  
(She sells as Lot 32)

## LOT 32

### Co-Vista Delta Lizzy

2-01 VG-85 +V++V

3133821930 100%RHA-NA

Born 12/18/15 12/17 PTA +2753GTPI  
+1516M +.15% +99F +.05% +59P  
+894NM\$ +7.4PL +2.6DPR 3.03SCS  
+1.90T +2.14UDC +.97FLC  
+220FE +2.9FI -.2LIV 7.3%SCE

**Fresh 11/10/17 w/ a lovely udder!**

**1st test- 92 lbs 4.3%F 3.1%P**

*Brian George*

330 Genesee Rd  
Arcade, NY 14009  
716-572-5988

#### Mr Mogul Delta 1427-ET

72128216 12/17 PTA +2839GTPI  
+1777M +.08% +90F +.00% +55P  
+967NM\$ +9.2PL +4.1DPR 2.84SCS  
+1.95T +2.62UDC +1.41FLC 99%R  
Mogul X VG-87 Robust

#### Co-Vista SS Lanette-ET

3-11 VG-85 VVG+V 73374594  
12/17 PTA +2327GTPI +957M +63F  
+41P +604NM\$ +5.0PL +.5DPR  
+1.42T +1.29UDC +.21FLC  
1-10 315 25060 4.2 1060 3.4 847  
2-09 304 27620 4.2 1164 3.5 970  
Sire: Seagull-Bay Supersire-ET

#### 2nd Dam:

Welcome Al Laurel  
EX-90 EEEVE  
2-11 364 33398 4.3 1443 3.2 1072  
4-01 324 32510 3.9 1262 3.0 961  
5-02 341 34080 4.1 1382 3.4 1146

#### 3rd Dam:

Welcome Baxter Laila-ET  
EX-91 EEVVE  
1-10 365 30868 3.5 1074 3.1 952

#### 4th Dam:

Welcome Oman Lady  
EX-91 EEEVE DOM  
4-07 365 38810 3.6 1393 3.5 1376  
Lifetime 108070 3.6 3910 3.6 3853

#### 5th Dam:

Welcome Magna Lone-ET  
EX-91 GMD-DOM  
4-06 365 39070 3.9 1532 3.2 1269  
Lifetime 118960 4.0 4735 3.2 3846

#### 6th Dam: Welcome Jeff Lonnis-ET

EX-91,2E EEEV GMD  
5-05 365 40990 3.9 1580 3.2 1331  
Lifetime 154360 3.8 5857 3.3 5131

#### 7th Dam: Welcome Luke Loretta-ET

VG-88 VEVEV GMD  
2-04 365 31810 4.0 1276 3.3 1049

#### 8th Dam: Welcome Bellman Lace

EX-90 EEEV GMD DOM  
7-07 365 36140 3.8 1373 3.3 1205  
Lifetime 152700 3.9 5996 3.3 5077

#### 9th Dam: Welcome Blackstar Lass-ET

VG-88 VEVV GMD DOM  
2-00 365 28500 4.1 1176 3.4 958

#### 10th Dam: Welcome Mark Lacey-ET

EX-91 EEVE GMD DOM  
4-06 365 32120 4.2 1349 3.2 1042

#### 11th Dam: Welcome Pete Lacey

VG-85 GMD DOM  
3-02 365 30150 4.3 1283 3.2 961

#### 12th Dam: Welcome Apache Lilac

VG-87 VG-MS  
5-04 365 28950 3.6 1051 3.2 913





**Ms Welcome Uno Tarina-ET VG-86 UUUUU DOM**

2-01 365 33160 4.3 1442 3.1 1042

(3rd Dam of Lot 33)

**LOT 33**

**Progenesis Imax Gerber**

12789685C 99%RHA-I  
Born 5/8/17 12/17 PTA +2811GTPI  
+1979M +.08% +96F +.02% +65P  
+928NMS +7.9PL +1.9DPR 7.0%SCE  
+2.34T +2.74UDC +1.39FLC  
+214FE +2.2FI +.0LIV 7.0%SCE

\*Ready to IVF

\*Housed at Boviteq, Quebec

**Progenesis LP c/o Greg Dietrich**

118 Side Rd 30

Mildmay, ON N0G 2JO Canada

519-270-3324

**Silverridge V Imax-ET**

12264620C 12/17 PTA +2757GTPI  
+1704M +.07% +83F +.01% +54P  
+858NMS +7.1PL +2.3DPR 2.92SCS  
+2.41T +2.83UDC +1.75FLC 78%R  
AltaSpring X Mogul

**Ri-Val-Re Delta Georgia-ET**

**GP-82-CAN 84-MS** 3133202160  
12/17 PTA +2715GTPI +2237M +85F  
+55P +832NMS +7.1PL +2.2DPR  
+2.21T +2.62UDC +1.43FLC  
-recently fresh  
Sire: Mr Mogul Delta 1427-ET

**2nd Dam:**

**Ms Tarina Emb 57715-ET**  
**VG-85 VV+GV**  
2-04 305 21760 5.1 1105 3.1 670

**3rd Dam: (Pictured above)**

**Ms Welcome Uno Tarina-ET**  
**VG-86 VVVVV DOM**  
2-01 365 33160 4.3 1442 3.1 1042

**4th Dam:**

**Ms Welcome Colby Taya-ET**  
**VG-88 EVVVV DOM**  
1-10 365 41237 3.3 1357 3.2 1333

**\*Dam of 1HO10824 Tango**

**5th Dam:**

**Clear-Echo FBI 1461-ET**  
**EX-90 EVEVE**  
2-00 365 36230 3.5 1261 3.1 1121

**6th Dam:**

**Clear-Echo 2635 Bol 1204-ET**  
**VG-88 VEVVV DOM**  
4-06 365 43950 3.7 1612 2.9 1295

**7th Dam:**

**Clear-Echo Addisn Thea 635**  
**VG-85 +VV+V GMD-DOM**  
1-11 365 33310 3.8 1272 3.1 1041

**8th Dam:**

**Clear-Echo Matt Thea 380-ET**  
**GP-83 +V+G+**  
2-10 343 27800 3.5 962 3.1 866

**9th Dam:**

**Clear-Echo Lake Thea-ET EX-90**  
4-03 330 33040 4.1 1343 2.9 954

**10th Dam:**

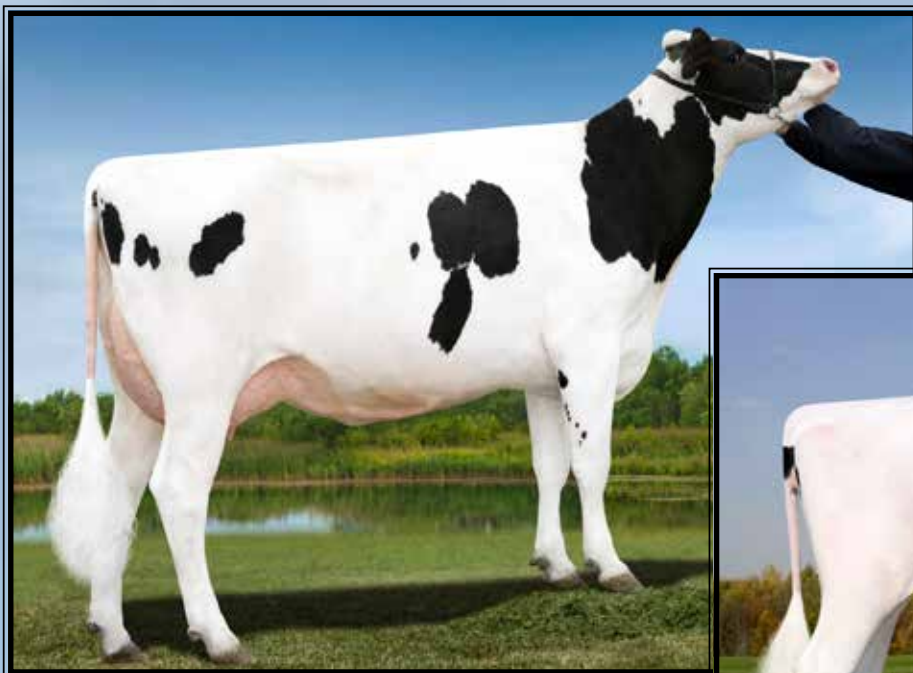
**Caernarvon Thor Shea-ET**  
**EX-90, EX-MS**  
4-04 365 30460 4.9 1499 3.2 975

**11th Dam: Cabin-Run Mark Star-ET**  
**VG-86 GMD-DOM**

4-02 365 34260 3.9 1336 3.0 1029

**12th Dam: Gay-Ridge Spirit Stacey**  
**VG-86 GMD-DOM**

5-04 365 33671 4.4 1493 2.8 939  
Lifetime 162489 3.9 6538 3.4 4956



**Swampy-Hollow Hope**  
**VG-86 UU+UU**

2-05 365 28076 4.0 1123 3.2 898  
(2nd Dam of Lot 34)



**Ri-Val-Re Hope-ET**  
(Dam of Lot 34)

## LOT 34

### Peak Hibiscus-ET

3139733253 98%RHA-I  
Born 2/4/17 12/17 PTA +2813GTPI  
+989M +.09% +62F +.06% +46P  
+909NM\$ +10.5PL +4.2DPR 2.54SCS  
+2.29T +2.54UDC +1.65FLC  
+133FE +4.3FI +3.4LIV 6.2%SCE

**\*Ready to flush conv. or IVF now!**  
**\*Donor Dam**

*Neil McDonah*

W21205 South Street  
Trempealeau, WI 54661  
608-385-1592

### Peak AltaFlywheel-ET

3129128750 12/17 PTA +2690GTPI  
+1039M +.13% +75F +.06% +48P  
+822NM\$ +8.1PL +2.9DPR 2.77SCS  
+2.12T +1.48UDC +1.29FLC 79%R  
Monterey X GP-83 DOM Supersire

### Ri-Val-Re Hope-ET

73697570 12/17 PTA +2628GTPI  
+1055M +66F +45P +764NM\$ +7.6PL  
+1.3DPR +2.33T +3.00UDC +1.71FLC  
-Due 3/12/17  
Sire: Westenrade AltaSpring  
(Pictured above)

### 2nd Dam: (Pictured above)

**Swampy-Hollow Hope**  
**VG-86 VV+VV**  
2-05 365 28076 4.0 1123 3.2 898  
**\*Sold for \$75,000 in Ri-Val-Re Sale**  
**\*Over \$600,000 in sales in 2015**

### 3rd Dam:

**Appealing Observer Hazel-ET**  
**VG-86 +V+GE**  
3-06 305 31690 3.7 1167 2.9 920  
4-07 302 30140 3.4 1037 3.0 896  
Lifetime 105200 3.6 3823 3.0 3117

### Maternal sisters include:

**Appealing Active Holly-ET EX-91**  
**Appealing Planet Halley-ET EX-90**  
**\*Sold for \$30,000 in 2011 Nat'l Conv**

### 4th Dam:

**Appealing Shottle Hannah-ET**  
**VG-86 EEE++ GMD-DOM**  
4-01 365 45980 3.2 1458 3.0 1383  
Lifetime 150460 3.4 5057 3.2 4780

### 5th Dam:

**Ladys-Manor Hadara T-ET**  
**VG-88 +EVVV DOM**  
3-03 365 39850 3.8 1532 3.1 1244  
Lifetime 132260 3.9 5173 3.3 4322

### 6th Dam:

**Ladys-Manor Tawny-ET**  
**VG-88 EEEVV GMD-DOM**  
5-00 365 37660 3.7 1412 3.2 1200  
Lifetime 118940 4.1 4882 3.4 4053

### 7th Dam: Ladys-Manor Tippy Tonya-ET

**VG-87 EEEEE+ DOM**  
4-06 365 42030 3.8 1604 3.0 1371  
Lifetime 127510 3.8 4801 3.2 4073

### 8th Dam: Ladys-Manor Topgun Tippy-ET

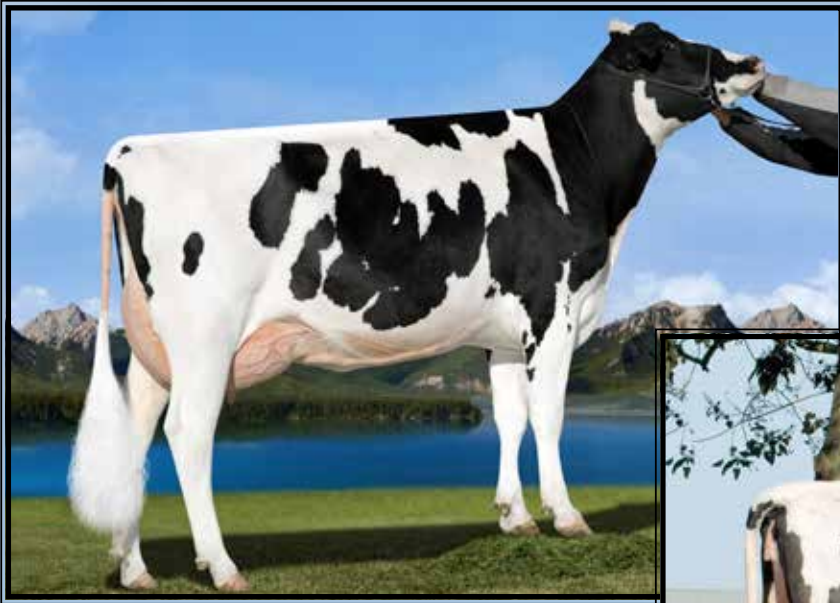
**VG-86 VEV++ GMD-DOM**  
2-01 365 29156 3.8 1116 3.2 933

### 9th Dam: Ladys-Manor Top Gun Gemini

**EX-93,3E EEEEE GMD-DOM**  
3-11 365 36080 3.5 1246 3.1 1106  
Lifetime 150300 3.8 5699 3.0 4495

**10th thru 12th Dams all VG or EX**

~More Holstein Fun in the Sun-Lido Edition~



**No-Fla Shine-ET GP-83**  
(Full sister to the Dam of Lot 35)



**No-Fla Spersire 36193-TW-ET**  
**GP-83 V++GU**  
1-11 312 29844 3.3 992 3.1 923  
(2nd Dam of Lot 35)

## LOT 35

### No-Fla Ragen Julie 47267-ET

3143627448 98%RHA-I  
Born 7/23/17 12/17 PTA +2791GTPI  
+2352M +.01% +88F +.00% +70P  
+918NMS +7.8PL +2.8DPR 2.76SCS  
+1.89T +1.82UDC +1.37FLC  
+197FE +2.6FI +1.5LIV 7.2%SCE  
**RZG +157**

\*Soon ready to IVF

### North Florida Holsteins LLC

2740 W CR 232  
Bell, FL 32619  
352-463-7174

### Fairmont Stoic Ragen-ET

73896769 12/17 PTA +2627GTPI  
+1632M +.02% +65F +.04% +62P  
+793NMS +7.3PL +2.8DPR 2.84SCS  
+1.29T +1.87UDC +1.68FLC 79%R  
Stoic X EX-90 DOM Moonboy

### No-Fla Montross 42390-ET

3132344325 12/18 PTA +2680GTPI  
+3061M +84F +80P +840NMS +6.1PL  
+1.4DPR +1.66T +1.48UDC +1.11FLC  
1-08 182 19378 3.7 717 3.0 577 RIP  
2/5 DHI test- 117 lbs  
proj. 305 ME 39987M 1383F 1142P  
Sire: Bacon-Hill Montross-ET  
**\*Potential VG 1st score!**

### 2nd Dam: (Pictured above)

**No-Fla Spersire 36193-TW-ET**  
**GP-83 V++GV**  
1-11 312 29844 3.3 992 3.1 923  
2-10 305 27730 3.7 1039 3.4 945  
**Full sister:**  
**No-Fla Shine-ET GP-83**  
(Pictured above)

### 3rd Dam:

**No-Fla Massey 30194-TW**  
**VG-85 VVGE+**  
2-01 365 26990 3.7 1010 3.4 920  
3-06 305 30810 3.6 1114 3.4 1043

### 4th Dam:

**No-Fla Oman Liana 21974**  
**VG-85 V+++V**  
3-01 305 22540 4.8 1087 3.7 844  
4-03 305 22300 4.7 1091 3.7 862



**Richmond-FD La Sausalito-ET GP-84 +UG+U**

1-10 322 28400 3.8 1078 3.1 885

(Dam of Lot 36)

**LOT 36**

**Richmond-FD Minneapolis-ET**

3137593840 99%RHA-I  
Born 7/24/16 12/17 PTA +2773GTPI  
+1993M -.03% +67F +.05% +73P  
+928NMS +9.4PL +3.1DPR 2.87SCS  
+1.59T +1.88UDC +1.28FLC  
+195FE +3.3FI +3.2LIV 6.9%SCE

**Bred 11/27/17, Due 9/2/18 to  
1HO12965 Radical +2757GTPI  
(If resulting calf is a male, the buyer will  
need to genomic test thru GENEX)**

**\*She will be set up to IVF on 3/8 for  
the new owner.**

**\*Unique sire stack**

**\*Only Magnus under 7% SCE &  
over +2720GTPI**

**Richmond Farms Dairy**

10705 Jennings Rd  
North Collins, NY 14111  
716-913-5739

**Wet Tuffenuff Magnus-ET**

3128461509 12/17 PTA +2783GTPI  
+2021M +.06% +91F +.04% +74P  
+884NMS +6.2PL +1.2DPR 2.77SCS  
+1.99T +2.81UDC +.59FLC 78%R  
Tuffenuff X VG-86 DOM Mogul

**Richmond-FD La Sausalito-ET**

**3-00 GP-84 +VG+V 73685339**  
12/17 PTA +2546GTPI +1185M +46F  
+48P +842NMS +10.3PL +4.0DPR  
+.51T +1.28UDC +1.10FLC  
1-10 322 28400 3.8 1078 3.1 885  
Sire: Spruce-Haven Stoic-ET  
(Pictured above)

**2nd Dam:**

**Richmond-FD Los Angeles-ET  
GP-80 G+G++**  
2-02 305 22828 4.2 960 3.2 734  
3-06 305 23928 4.1 987 3.0 725  
-working in 3rd lactation  
Sire: Morningview Levi-ET

**3rd Dam:**

**Richmond-FD D Juneau-ET \*TY  
VG-87 +V++E DOM**  
3-10 365 43440 3.8 1669 3.2 1404  
5-06 365 38920 3.8 1474 3.3 1265  
Lifetime 144780 4.1 5865 3.4 4916  
Sire: Ked Outside Jeeves-ET

**4th Dam:**

**Richmond-FD Dakota-ET \*TV  
VG-85 VV+++**  
2-07 365 35230 3.5 1241 2.9 1039  
3-09 365 35630 3.7 1312 2.9 1044

**5th Dam:**

**Richmond-FD M-Star Montana  
VG-87 VEYVV DOM**  
2-03 365 39270 3.5 1366 2.9 1151  
Lifetime 199030 3.3 6649 3.0 5993

**6th Dam:**

**Richmond-FD H Star Marcella  
GP-84 EEV++**  
5-00 365 32130 3.1 1010 2.9 938  
Lifetime 122730 3.2 3918 3.0 3739

**7th Dam:**

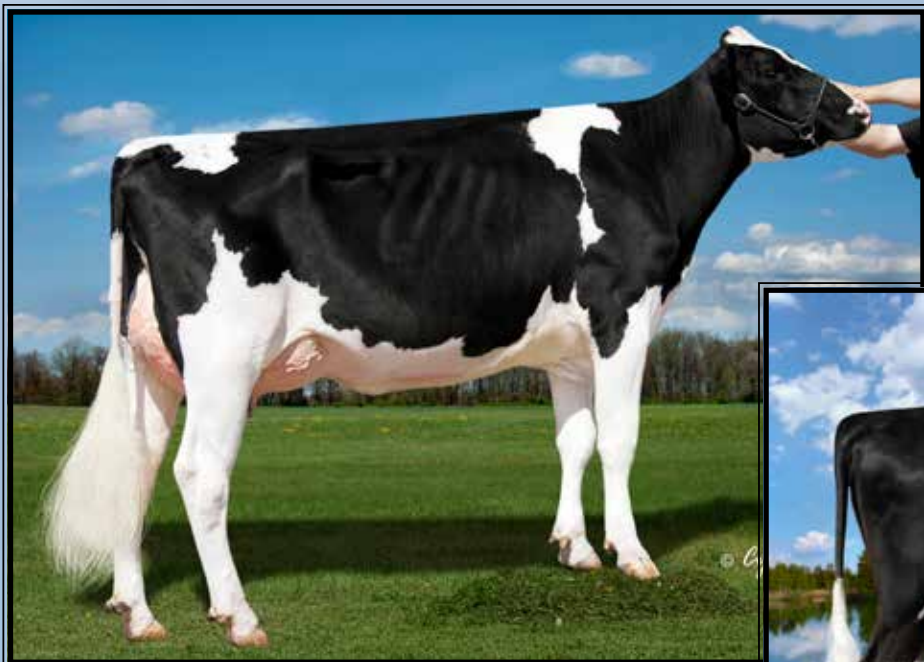
**Charich Eden High Star  
VG-85 +V+VV**  
3-03 365 28820 3.5 1008 2.9 850  
Lifetime 122480 3.5 4246 3.0 3638

**8th Dam:**

**Charich Neth Star Eden  
VG-87 +EV+V GMD-DOM**  
6-02 311 33840 4.3 1457 3.0 1017  
Lifetime 185620 4.0 7426 3.1 5824

**9th Dam:**

**Charich C Star Beth-ET  
VG-88 VEEVV DOM**  
9-09 365 31550 3.9 1225 3.0 936  
Lifetime 244930 3.8 9332 3.0 7425



**Welcome Uno Winney-ET**  
**GP-80 DOM**  
 3-05 300 28820 3.8 1109 3.2 923  
 (3rd Dam of Lot 37)



**IHG Winney Jerod 55380-ET VG-85**  
 (2nd Dam of Lot 37)

**LOT 37**

**Progenesis Imax Wildrose**

12789810C 99%RHA-NA  
 Born 6/12/17 12/17 PTA +2804GPTI  
 +1655M +.16% +105F +.03% +57P  
 +954NMS +7.7PL +2.7DPR 2.91SCS  
 +1.78T +2.11UDC +.90FLC  
 +220FE +3.2FI +2.1LIV 6.8%SCE

**\*Ready to IVF**

**\*Housed at Boviteq, Quebec**

**Progenesis LP c/o Greg Dietrich**

118 Side Rd 30  
 Mildmay, ON N0G 2JO Canada  
 519-270-3324

**Silvridge V Imax-ET**

12264620C 12/17 PTA +2757GTPI  
 +1704M +.07% +83F +.01% +54P  
 +858NMS +7.1PL +2.3DPR 2.92SCS  
 +2.41T +2.83UDC +1.75FLC 78%R  
 AltaSpring X Mogul

**Tramilda Denver Whitney-ET**

3134356932 12/17 PTA +2780GTPI  
 +1411M +98F +54P +894NMS +7.6PL  
 +3.0DPR +2.10T +2.08UDC +.61FLC  
 -Died  
 Sire: Mr Mogul Denver 1426-ET

**2nd Dam:**

**IHG Winney Jerod 55380-ET**  
**VG-85 +VG+V**  
 1-10 365 23460 4.5 1063 3.6 838

**3rd Dam: (Pictured above)**

**Welcome Uno Winney-ET**  
**GP-80 DOM**  
 2-03 224 20150 3.8 768 3.4 686

**4th Dam:**

**Welcome Billion Wiommi-ET**  
**EX-90 EEVVE DOM**  
 1-11 365 29835 3.6 1066 3.3 995

**5th Dam:**

**Welcome Ramos Wilma-ET**  
**VG-85 +V++V GMD-DOM**  
 1-11 365 31050 3.7 1141 3.3 1017

**6th Dam:**

**Welcome Manfred Willa**  
**VG-88 EEEVV DOM**  
 3-10 365 38180 4.2 1591 3.5 1338

**7th Dam:**

**Welcome Patron Willowy-ET**  
**VG-86 VVV+V**  
 2-01 365 29750 4.1 1232 3.5 1030

**8th Dam:**

**Welcome Wintry-ET**  
**VG-87 VVV+V GMD-DOM**  
 2-05 365 28700 4.1 1178 3.5 1002

**9th Dam:**

**Welcome Cleitus Winner**  
**VG-85 VVE+V GMD-DOM**  
 5-06 365 35980 3.5 1262 3.2 1142

**10th Dam:**

**Welcome Neil Winter**  
**VG-86 +EV+**  
 4-08 362 26320 3.4 883 3.6 942  
 Lifetime 103140 3.5 3631 3.5 3633

~More Holstein Fun in the Sun-Lido Edition~



**Emmert Robust Gem-ET**  
**VG-85 VVG+U DOM**  
 2-02 305 22340 4.2 929 3.7 825  
 (2nd Dam of Lot 38)



**Emmert Tango Goldstar-ET**  
**GP-84 U++++**  
 (Dam of Lot 38)

**LOT 38**

**Peak Goldleaf-ET**

3139851961 99%RHA-I  
 Born 11/19/16 12/17 PTA +2788GTPI  
 +1968M +.02% +77F +.03% +69P  
 +861NM\$ +7.6PL +4.4DPR 2.94SCS  
 +2.04T +2.22UDC +.76FLC  
 +178FE +4.4FI +.6LIV 7.4%SCE

**\*Ready to flush conv. or IVF now!**

**\*Housed at Gen-Start, Trempealeau, WI**

*Peak Genetics*

N8350 High Rd  
 Watertown, WI 53094

contact: Scott Culbertson 507-923-1881

**S-S-I Montross Jedi-ET**

3123886035 12/17 PTA +2810GTPI  
 +2582M -.09% +70F +.03% +87P  
 +901NM\$ +8.6PL +3.3DPR 2.97SCS  
 +1.95T +1.69UDC +1.31FLC 79%R  
 Montross X VG-89 DOM Supersire

**Emmert Tango Goldstar-ET**

**3-00 GP-84 V++++ 72862983**  
 12/17 PTA +2611GTPI +1286M +74F  
 +49P +778NM\$ +6.6PL +2.9DPR  
 +1.37T +1.92UDC +1.68FLC  
 2-04 365 26303 4.5 1173 3.7 974  
 Sire: Mr Welcome Hill Tango-ET  
 (Pictured above)

**2nd Dam: (Pictured above)**

**Emmert Robust Gem-ET**  
**VG-85 VVG+V DOM**  
 2-02 305 22340 4.2 929 3.7 825

**3rd Dam:**

**Schillview P Greenback-ET**  
**VG-88 VEGVV**  
 3-05 345 32820 3.3 1074 3.6 1168

**4th Dam:**

**Schillview Shottle Goldy-ET**  
**VG-87 VVE+V GMD-DOM**  
 2-01 365 22010 3.9 1261 3.4 1085

**5th Dam:**

**Schillview Gart Giesanna-ET**  
**EX-91,3E EEEVE GMD-DOM**  
 4-01 365 36900 3.5 1303 3.1 1147  
 6-03 365 34230 3.5 1183 3.1 1052  
 Lifetime 190360 3.6 6791 3.3 6238

**6th Dam:**

**Mikary Manfred Giesala-ET**  
**VG-88 EEEEV GMD-DOM**  
 1-11 365 35100 3.7 1303 3.4 1192  
 4-11 365 38970 3.5 1381 3.3 1284  
 Lifetime 201790 3.5 7161 3.3 6757



**EDG Christa HL 2066-ET EX-90 EVEVE**

3-06 365 32780 4.0 1325 3.7 1206

(Dam of Lot 39)

**LOT 39**

**Stunning Jedi Calista-ET**

3134975409 99%RHA-I  
 Born 3/5/17 12/17 PTA +2760GTPI  
 +1792M +.00% +68F +.07% +75P  
 +859NM\$ +8.9PL +3.1DPR 2.90SCS  
 +2.19T +1.90UDC +1.47FLC  
 +191FE +3.0FI +1.5LIV 7.9%SCE  
**\*RZG 158**  
**\*Ready to flush conv. or IVF now!**

*Austin Yoder*  
 5731 State Route 26E  
 Montezuma, GA 31063  
 478-244-9063

**S-S-I Montross Jedi-ET**

3123886035 12/17 PTA +2810GTPI  
 +2582M -.09% +70F +.03% +87P  
 +901NM\$ +8.6PL +3.3DPR 2.97SCS  
 +1.95T +1.69UDC +1.31FLC 79%R  
 Montross X VG-89 DOM Supersire

**EDG Christa HL 2066-ET**

**3-11 EX-90 EVEVE** 72437613  
 12/17 PTA +2381GTPI +681M +36F  
 +41P +499NM\$ +4.7PL +1.4DPR  
 +2.60T +2.55UDC +1.66FLC  
 2-03 365 25070 4.0 1006 3.6 896  
 3-06 365 32780 4.0 1325 3.7 1206  
 Sire: Seagull-Bay Headliner-ET  
 (Pictured above)

.....  
 : **\*Sells w/ embryo contract!** :  
 : **5-#1 direct transfer embryos to** :  
 : **Germany thru GenElite.** :  
 : **Price @ \$1800/each = \$9,000** :  
 : .....  
 : .....

**2nd Dam:**

**Langs-Twin-B Christa-ET**  
**VG-87 EVEGE**  
 2-05 305 20810 3.7 760 3.4 711  
 5-08 351 32930 4.1 1337 3.4 1122

**3rd Dam:**

**Langs-Twin-B C-S Ashlyn-ET**  
**EX-90 EEVVE GMD-DOM**  
 2-03 365 30150 4.3 1306 3.4 1020  
 7-06 365 31910 3.7 1189 3.4 1090

**4th Dam:**

**Ralma Finley C-F Chuckle-ET**  
**EX-90 EEVVE GMD-DOM**  
 2-06 365 38960 3.4 1344 3.5 1365  
 4-11 365 34760 3.2 1108 3.3 1161  
 Lifetime 102350 3.3 3349 3.6 3654

**5th Dam:**

**Ralma Christmas Fudge-ET**  
**VG-88 GMD-DOM**  
 2-03 365 31810 4.1 1292 3.2 1027  
 Sire: Regancrest Elton Durham-ET

**6th Dam:**

**Ralma Durham Frisky-ET**  
**VG-88 EVEVV GMD-DOM**  
 2-10 365 33700 4.5 1516 3.4 1132

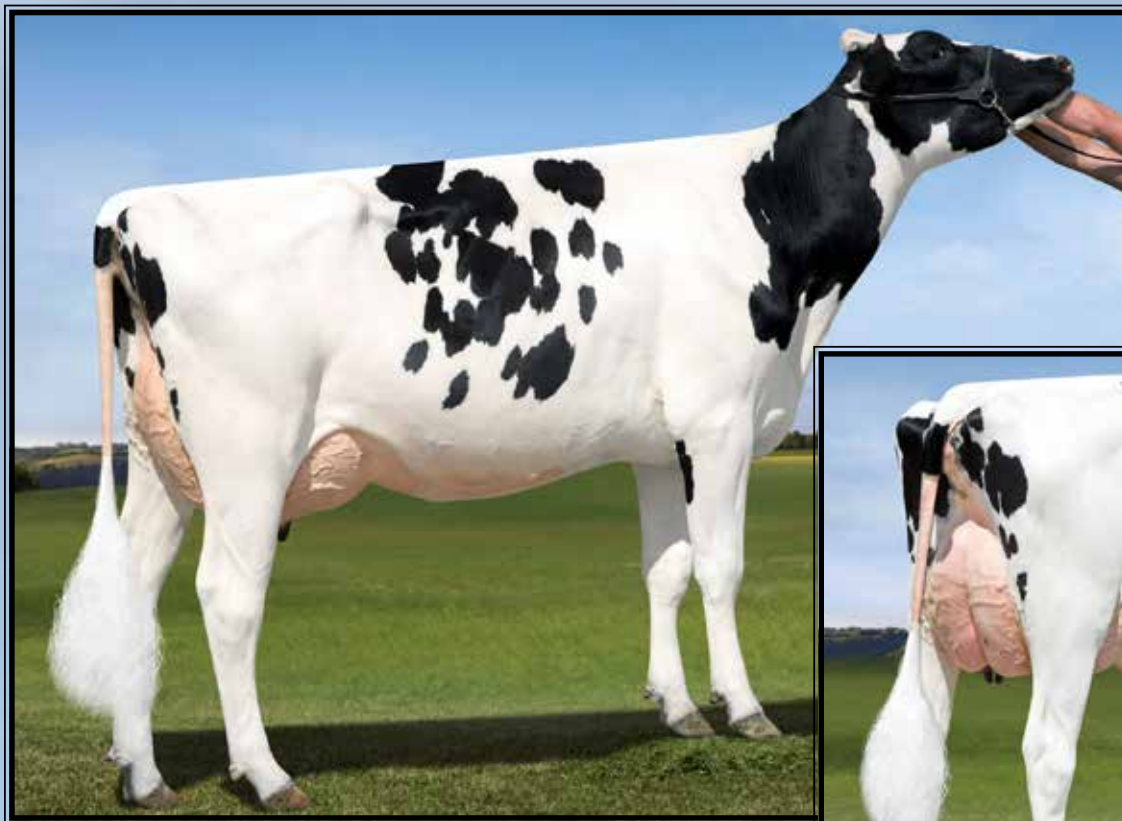
**7th Dam:**

**Ralma Juror Faith**  
**EX-91 EEEVV GMD-DOM**  
 4-02 365 47860 4.5 2165 2.9 1407  
 Lifetime 133520 4.5 5986 3.1 4105

**8th Dam:**

**Ralma Leadman Fashion**  
**VG-89 VEEVV**  
 4-10 365 40710 3.7 1494 2.8 1155  
 Lifetime 117710 3.6 4295 3.0 3519

~More Holstein Fun in the Sun-Lido Edition~



**EDG Tiger Mogul Tammy-ET EX-90 UUUU**

3-03 305 32530 3.7 1191 3.3 1072  
(2nd Dam of Lot 40)

**LOT 40**

**TJR Detour Tenley 37024**

3128013871 100%RHA-NA  
Born 4/5/17 12/17 PTA +2785GTPI  
+1133M +.18% +90F +.06% +52P  
+889NMS +8.1PL +4.4DPR 3.10SCS  
+2.12T +2.39UDC +1.06FLC  
+188FE +4.6FI +2.9LIV 7.1%SCE

\*Ready to IVF now  
\*Donor Dam: -made 20 oocytes each  
on 2 cycles pooled

**Genosource**

2188 78th Street  
Blairstown, IA 52209  
Tim Rauen 563-451-5866  
Kyle Demmer 563-451-5376  
Amanda Hauck 570-765-0536

**Ronelee Midnight Detour-ET**

73143748 12/17 PTA +2683GTPI  
+1324M +.08% +72F +.03% +50P  
+866NMS +8.4PL +3.1DPR 2.78SCS  
+1.62T +2.67UDC +.70FLC 79%R  
Midnight X EX-91 DOM Mogul

**TJR Tammy Delta 56371**

3010355118 12/17 PTA +2768GTPI  
+1329M +74F +45P +819NMS +8.2PL  
+4.8DPR +2.55T +2.92UDC +1.18FLC  
Sire: Mr Mogul Delta 1427-ET

**2nd Dam: (Pictured above)**

**EDG Tiger Mogul Tammy-ET  
EX-90 UUUU**  
2-01 305 24180 3.6 881 3.4 829  
3-03 305 32530 3.7 1191 3.3 1072

**3rd Dam:  
Lismore Observer Tiger-ET  
GP-83 +VV++**

**4th Dam:  
Lismore Shottle 9245  
EX-91 EEUU DOM**  
3-11 333 35440 4.2 1476 3.0 1055

**5th Dam:  
Lismore Zenith 8321-ET GP-82**  
1-10 365 37570 3.3 1253 3.3 1236

**6th Dam:  
Walnut-S Mtoto 821 Elyse-ET  
VG-86 VVVVV GMD-DOM**  
5-07 365 35790 3.8 1364 3.3 1176

**7th Dam:  
Walnut-S Corky Rita Faye-ET  
VG-87 VVE+V DOM**  
2-02 365 235630 4.3 1093 3.6 913

**8th Dam:  
Walnut-S Bellwood Nita Rita GP-82**  
1-10 365 36340 4.2 1530 3.5 1278

**9th Dam:  
Walnut-S Luke Brook Nita-ET  
VG-86 GE+EV**  
6-03 365 30710 4.4 1347 3.6 1109

**10th Dam:  
Wincrest Mascot Brook-ET  
VG-86 VVV+V DOM**  
2-08 365 23520 4.4 1026 3.9 925

**11th Dam:  
Walnut-S Luke Mk Bella Bonita-ET  
EX-90,2E EEEV GMD-DOM**  
4-04 365 26690 4.5 1192 3.1 839

**12th Dam:  
Walnut-S Bell Pillow Bella  
VG-88 VEVV DOM**  
4-03 365 26820 4.5 1202 3.5 930





**Larcrest Cardigan-ET VG-86 UU++U**

2-02 288 20390 3.9 800 3.3 667

(3rd Dam of Lot 41)

**LOT 41**

**Progenesis Catena Guara2408**

12948988C 99%RHA-I  
Born 11/28/17 1/18 PTA +2807GTPI  
+1419M +.12% +86F +.07% +61P  
+947NMS +10.0PL +4.6DPR 2.60SCS  
+1.42T +1.26UDC +.77FLC  
+196FE +4.6FI +1.1LIV 6.9%SCE

\*Housed at Crookston, Ontario, Canada

**Progenesis LP c/o Greg Dietrich**

118 Side Rd 30  
Mildmay, ON N0G 2JO Canada  
519-270-3324

**Westcoast Guarantee-ET**

12371147C 12/17 PTA +2759GTPI  
+1371M +.11% +81F +.07% +60P  
+949NMS +9.7PL +4.5DPR 2.57SCS  
+1.08T +1.13UDC +.17FLC 76%R  
Boastful X GP-83 Tango

**Progenesis Jett Catena**

12608981C 12/17 PTA +2856GTPI  
+1036M +94F +55P +961NMS +9.0PL  
+4.3DPR +1.72T +1.86UDC +1.06FLC  
Sire: S-S-I Montross Jett-ET

**2nd Dam:**

**Ms Mardi Gras Critter-ET**  
2-03 202 16367 4.6 745 3.5 569

**3rd Dam: (Pictured above)**  
**Larcrest Cardigan-ET**  
**VG-86 VV++V**

2-02 288 20390 3.9 800 3.3 667

**4th Dam:**

**Larcrest Cale-ET**  
**VG-89 VEEVE DOM**

2-02 365 41710 5.3 2204 3.8 1566

**5th Dam:**

**Larcrest Crimson-ET**  
**EX-93,2E EEEEE GMD-DOM**

5-02 365 46390 5.3 2448 3.7 1708

6-10 365 39260 4.1 1609 3.6 1409

Lifetime 174870 4.8 8336 3.8 6589

**6th Dam:**

**Larcrest Cosmopolitan**  
**VG-87 E+VVV DOM**

2-04 365 30930 4.1 1261 3.6 1119

**7th Dam:**

**Larcrest Oside Champagne-TW**  
**VG-87 VVVEV**

2-03 365 29110 4.5 1322 3.7 1077

**8th Dam:**

**Larcrest Juror Chanel**  
**EX-93,3E EEEEE GMD-DOM**

9-00 365 48460 4.0 1943 3.4 1648

-Over 250,000 lifetime

**9th Dam:**

**Larcrest Lindy Chandra VG-85**  
2-05 365 20896 4.8 993 3.8 803

**10th Dam:**

**Larcrest Inspiration Carly**  
**VG-87 EEVVV**

3-05 305 21800 4.5 973 3.3 802



**Ms Lookout Pesc Bkm Bria-ET**  
**VG-86 VUGEV DOM**  
 (3rd Dam of Lot 42)



**PES009 Supersire Breanne**  
 (2nd Dam of Lot 42)

## LOT 42

### Progenesis Betsy Bour2378

12948958C 99%RHA-I  
 Born 11/20/17 1/18 PTA +2798GTPI  
 +2357M -.02% +82F +.00% +70P  
 +892NM\$ +7.3PL +2.4DPR 2.73SCS  
 +2.09T +2.52UDC +.78FLC  
 +191FE +2.8FI +.4LIV 9.2%SCE

\*Housed at Crookston, Ontario, Canada

### Progenesis LP c/o Greg Dietrich

118 Side Rd 30  
 Mildmay, ON N0G 2JO Canada  
 519-270-3324

### Wa-Del ABS Bourbon-ET

3014558977 12/17 PTA +2741GTPI  
 +2253M -.05% +70F +.01% +71P  
 +816NM\$ +6.4PL +3.1DPR 2.79SCS  
 +2.12T +2.07UDC +1.30FLC 79%R  
 Montross X VG-85 Massey

### Progenesis Denver Betsy

12380007C 12/17 PTA +2835GTPI  
 +2225M +109F +69P +935NM\$ +6.8PL  
 +.3DPR +2.49T +2.52UDC +.88FLC  
 -Just fresh early December & looks great!  
 Sire: Mr Mogul Denver 1426-ET

### 2nd Dam: (Pictured above)

**PES009 Supersire Breanne**  
 2-05 365 34271 4.3 1479 3.6 1217

### 3rd Dam: (Pictured above)

**Ms Lookout Pesc Bkm Bria-ET**  
**VG-86 VUGEV DOM**  
 2-00 314 21660 4.2 915 3.5 765

### 4th Dam:

**Ralma-RH Manoman Banjo-ET**  
**VG-88-CAN 88-MS**  
 4-03 365 38267 4.0 1545 3.6 1380

### 5th Dam:

**Ralma Goldwyn Clarinet-ET**  
**EX-91,2E EEEVV**  
 4-00 365 38719 4.4 1689 3.3 1294  
 5-09 365 40080 4.6 1863 3.2 1276  
 Lifetime 151890 4.5 6808 3.3 5214

### 6th Dam:

**Ralma Christmas Fudge-ET**  
**VG-88 GMD-DOM**  
 2-03 365 31810 4.1 1292 3.2 1027  
 Sire: Regancrest Elton Durham-ET

### Full sisters to Fudge:

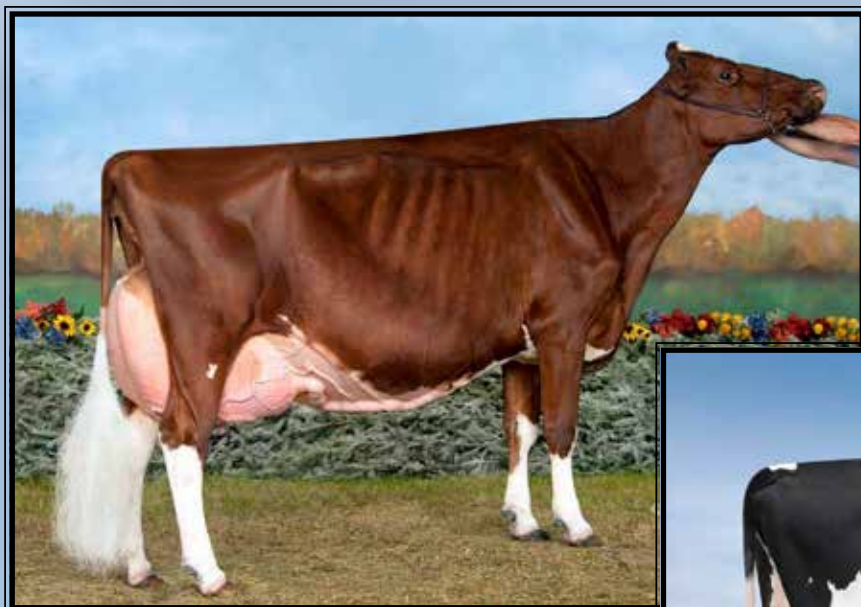
**Ralma Durham Fireball-ET**  
**EX-92,EX-MS GMD-DOM**  
 2-05 365 33800 4.0 1364 3.4 1139  
**Ralma Durham Frisky-ET**  
**VG-88 EVEVV GMD-DOM**  
 2-10 365 33700 4.5 1516 3.4 1132

### 7th Dam:

**Ralma Juror Faith**  
**EX-91 EEEVV GMD-DOM**  
 4-02 365 47860 4.5 2165 2.9 1407  
 Lifetime 133520 4.5 5986 3.1 4105

### 8th Dam:

**Ralma Leadman Fashion**  
**VG-89 VEEVV**  
 4-10 365 40710 3.7 1494 2.8 1155  
 Lifetime 117710 3.6 4295 3.0 3519



**KHW Regiment Apple-RED-ET  
EX-96,3E EEEEE DOM**

*\*Grand Champion of the 2011 Grand International Red & White Show  
(Mat. sister to the 3rd Dam of Lots 43 & 44)*



**Blondin TJR Supersire Aroma-ET\*RC  
UG-85 UUUU+**

2-01 305 24350 4.5 1099 3.1 756  
(2nd Dam of Lots 43 & 44)

**LOT 43**

**Tramilda Marquee Apple-ET  
\*CD\*TR**

3145966793 99%RHA-I  
Born 11/11/17 1/18 PTA +2807GTPI  
+1112M +.04% +51F +.07% +50P  
+948NM\$ +12.1PL +5.4DPR 2.70SCS  
+1.61T +2.78UDC +1.24FLC  
+140FE +5.3FI +3.5LIV 6.0%SCE  
**\*Housed at Synergy Genetics, NY**

**LOT 44**

**Tramilda Marquee Angel-ET  
\*CD\*TR**

3145966794 99%RHA-I  
Born 11/12/17 1/18 PTA +2803GTPI  
+1316M +.03% +58F +.08% +59P  
+956NM\$ +12.1PL +4.7DPR 2.79SCS  
+1.69T +2.39UDC +1.40FLC  
+168FE +4.6FI +2.8LIV 6.7%SCE  
**\*Housed at Synergy Genetics, NY**

*Troy Yoder*

5731 State Route 26E  
Montezuma, GA 31063  
478-244-2172

**S-S-I Modesty Marquee-ET**

3131003443 12/17 PTA +2812GTPI  
+1513M +.00% +57F +.05% +59P  
+973NM\$ +11.6PL +5.3DPR 2.86SCS  
+1.58T +2.09UDC +1.61FLC 75%R  
Modesty X GP-80 Unite

**Endco Spring Ambition-ET\*RC**

2-02 GP-81 G+GG+ 3133063204  
12/17 PTA +2638GTPI +1088M +56F  
+49P +796NM\$ +9.3PL +3.8DPR  
+1.46T +2.29UDC +1.10FLC  
2-00 73 4763 4.4 208 3.4 160 RIP  
-Will be scored in March, potential VG  
Sire: Westenrade AltaSpring

**2nd Dam: (Pictured above)**  
**Blondin TJR Supersire Aroma-ET\*RC**  
**VG-85 VVVV+**  
2-01 305 24350 4.5 1099 3.1 756

**3rd Dam:**  
**KHW Alchemy Adeline-RED-ET**  
**VG-86 VVV+V**  
2-02 254 18080- 4.4 795 3.8 687

**Maternal sister:**  
**KHW Regiment Apple-RED-ET \*CV**  
**EX-96,3E EEEEE DOM**  
*\*Multiple All-Am & greatest R&W ever  
(Pictured above)*

**Maternal brother: 'Advent-RED'**

**4th Dam:**  
**Kamps-Hollow Altitude-ET \*CV**  
**EX-95,2E EEEEE DOM**  
7-00 365 39690 4.7 1849 3.5 1385  
Lifetime 144460 4.4 6295 3.7 5288

**5th Dam:**  
**Clover-Mist Alisha-ET**  
**EX-93,3E EEEEE DOM**  
8-07 365 36920 4.2 1553 3.4 1258  
Lifetime 226470 4.7 10659 3.6 8149

**6th Dam:**  
**Clover-Mist Augy Star-ET \*RC**  
**EX-94,4E EEEEE DOM**  
7-10 365 43140 5.0 2136 3.3 1421  
Lifetime 206250 4.7 9793 3.5 7187

**7th Dam:**  
**D-R-A August**  
**EX-96,4E EEEEE DOM**  
8-05 365 27460 4.3 1187 3.2 871  
Lifetime 190200 4.4 8281 3.3 4457  
*\*Nom. All-American Aged Cow 1986  
\*All-Wisconsin Aged Cow 1987*

**8th Dam:**  
**D-R-A Ideal Precious Leader EX-90,2E**  
7-06 358 20090 3.9 787 3.4 765

**9th Dam:**  
**D-R-A Princess Lad Leader EX-90,3E**  
9-05 305 19160 4.2 809

~More Holstein Fun in the Sun-Lido Edition~



**Peak Menna Ahead 850-ET VG-89 VEVEE**  
(2nd Dam of Lot 45)

## LOT 45 Embryos

\*Selling 5-#1 IVF DT female embryos  
sired by Tarrino

\*Parent avg. +2830G +939NMS

### Genosource

2188 78th Street

Blairstown, IA 52209

Tim Rauen 563-451-5866

Kyle Demmer 563-451-5376

Amanda Hauck 570-765-0536

### Welcome Tarrino 3181-ET

3129340917 12/17 PTA +2899GTPI

+2005M +.09% +101F +.03% +66P

+970NMS +7.2PL +3.4DPR 3.00SCS

+2.48T +2.50UDC +1.80FLC 75%R

Modesty X VG-85 Mardi Gras

### Genosource Delta 33940

3126777945 12/17 PTA +2760GTPI

+1415M +79F +49P +907NMS +8.9PL

+3.8DPR +2.02T +2.63UDC +1.07FLC

-Due August, 2018

Sire: Mr Mogul Delta 1427-ET

### 2nd Dam: (Pictured above) Peak Menna Ahead 850-ET VG-89 VEVEE

1-10 296 28113 3.3 929 3.2 908

2-09 261 34172 2.8 970 3.0 1034 RIP

### 3rd Dam:

S-S-I Shamrock Menna7392-ET  
VG-85 +VGVV

1-11 365 26870 4.1 1090 3.0 810

### 4th Dam:

Roylane Shot Mindy 2079-ET

VG-86 VVVVV DOM

2-02 365 34589 4.3 1489 3.3 1148

### 5th Dam:

Seagull-Bay Oman Mirror-ET

VG-86 +VVVV DOM

3-00 365 36430 4.4 1606 3.6 1304

### \*Dam of popular AI sires:

7HO10524 Robust & 7HO11207 Punch

### 6th Dam:

Seagull-Bay Manat Mirage-ET

EX-90 VEVEE GMD-DOM

3-06 365 35900 3.8 1364 3.4 1229

### 7th Dam:

Lynmead Celsius Minnow-ET \*TV

EX-91,2E EEEVV GMD-DOM

4-10 365 49550 3.7 1857 3.2 1592

7-00 365 47140 3.5 1637 3.1 1479

Lifetime 255910 3.7 9446 3.3 8481

### 8th Dam:

CMV Melwood Mindy-ET

VG-85 VE+V GMD-DOM

4-01 365 36341 3.6 1305 3.4 1239

### 9th Dam: Briarpatch-R Misty-ET

VG-85 +E+V GMD-DOM

2-02 365 24680 4.8 1176 3.1 776

### 10th Dam: Rilara Mars Las Ravena

EX-91 EVEE GMD-DOM

4-03 305 29030 4.6 1329

~More Holstein Fun in the Sun-Lido Edition~



### Sandy-Valley Robust Ruby-ET EX-90 VEVEU

2-04 305 29450 3.2 950 3.3 971

(2nd Dam of Lot 46)

## LOT 46 Embryos

\*Selling 5-#1 IVF DT female embryos  
sired by AltaMontoya

\*Parent avg. +2793G +928NMS

### Genosource

2188 78th Street

Blairstown, IA 52209

Tim Rauen 563-451-5866

Kyle Demmer 563-451-5376

Amanda Hauck 570-765-0536

### Peak AltaMontoya-ET

3134407079 12/17 PTA +2864GTPI

+2089M +.09% +105F +.06% +79P

+960NMS +8.0PL +2.2DPR 2.79SCS

+2.09T +1.84UDC +.93FLC 75%R

AltaMoreno X VG-85 Supersire

### Genosource Rue 80032-ET

3139851914 12/17 PTA +2722GTPI

+2356M +69F +70P +896NMS +8.5PL

+1.9DPR +1.75T +2.2UDC +1.83FLC

Sire: Bacon-Hill Pety Modesty-ET

### 2nd Dam: (Pictured above)

Sandy-Valley Robust Ruby-ET  
EX-90 VEVEU

2-04 305 29450 3.2 950 3.3 971

\*Dam of AI sire 'Rubicon' +2799G

### 3rd Dam:

Sandy-Valley Plane Sapphire

VG-87 VV+VV DOM

2-00 365 39130 3.3 1301 3.0 1175

\*Dam of Sterling & Saloon

### 4th Dam:

Sandy-Valley Bolt Sheila-ET

EX-90 EEVEU

2-02 365 44790 3.6 1607 2.9 1294

### 5th Dam:

Sandy-Valley Forbid Sully

VG-87, VG-MS GMD

2-03 365 35110 3.7 1310 3.1 1095

### 6th Dam:

Orthoapple Marshall Alia-ET

VG-89, VG-MS GMD-DOM

2-04 365 36210 4.4 1605 3.2 1154

### 7th Dam:

Regancrest-JB Tatum-ET

VG-87, VG-MS DOM

2-04 365 32682 3.6 1163 3.2 1059

### 8th Dam:

Regancrest Tesk Della

EX-90 VEVEE GMD-DOM

5-11 365 35510 3.5 1234 3.2 1134

\*Nom. Global Cow of the Year 2006

### 9th Dam:

Snow-N Denises Dellia

EX-95, 2E GMD-DOM

7-06 365 35610 4.0 1431 2.9 1035

\*Dam of Durham & Dundee

### 10th Dam:

Snow-N Dorys Denise

EX-90, 2E EX-MS GMD-DOM

5-09 365 33350 3.8 1256 3.1 1038



**S-S-I Moonry Myesha 9071-ET VG-85 UUU+U DOM**

2-01 365 33260 4.0 1330 3.5 1152  
(2nd Dam of Lots 13, 14, 21, 22 & 47)

**LOT 47A Embryos**

\*Selling 5-#1 IVF DT female embryos  
sired by Pinnacle

\*Parent avg. +2796G +955NMS

**LOT 47B Embryos**

\*Selling 5-#1 IVF DT female embryos  
sired by Tarrino

\*Parent avg. +2802G +936NMS

**Genosource**

2188 78th Street  
Blairstown, IA 52209  
Tim Rauen 563-451-5866  
Kyle Demmer 563-451-5376  
Amanda Hauck 570-765-0536

**Sire of Lot 47A:**

**S-S-I Modesty Pinnacle-ET**  
3135087428 12/17 PTA +2888GTPI  
+2227M -.02% +79F +.01% +70P  
+1007NMS +10.0PL +3.2DPR 2.95SCS  
+2.40T +2.47UDC +2.50FLC 74%R  
Modesty X Montross

**Sire of Lot 47B:**

**Welcome Tarrino 3181-ET**  
3129340917 12/17 PTA +2899GTPI  
+2005M +.09% +101F +.03% +66P  
+970NMS +7.2PL +3.4DPR 3.00SCS  
+2.48T +2.50UDC +1.80FLC 75%R  
Modesty X VG-85 Mardi Gras

**Dam of Lots 47A & 47B:**

**Genosource Delta 35341-ET**  
3137839486 12/17 PTA +2704GTPI  
+1718M +88F +49P +902NMS +9.3PL  
+3.2DPR +1.47T +1.90UDC +1.00FLC  
-Due September, 2018  
Sire: Mr Mogul Delta 1427-ET

**2nd Dam: (Pictured above)**

**S-S-I Moonry Myesha 9071-ET**  
**VG-85 VVV+VV DOM**

2-01 365 33260 4.0 1330 3.5 1152

**3rd Dam: (Pictured w/ Lot 21)**

**S-S-I Bookem Modesto 7269-ET**  
**VG-87 VV+V DOM**

3-03 305 25995 3.8 982 3.5 909

**AI sons include: Mando & Marshman**

**4th Dam:**

**Roylane Shot Mindy 2079-ET**  
**VG-86 VVVVV DOM**

2-02 365 34589 4.3 1489 3.3 1148

**\*Dam of 'Monarch' at Select!**

**5th Dam:**

**Seagull-Bay Oman Mirror-ET**  
**VG-86 +VVVV DOM**

3-00 365 36430 4.4 1606 3.6 1304

**\*Dam of popular AI sires:**

**7H10524 Robust & 7H11207 Punch**

**6th Dam:**

**Seagull-Bay Manat Mirage-ET**  
**EX-90 VEVVE GMD-DOM**

3-06 365 35900 3.8 1364 3.4 1229

**7th Dam:**

**Lynmead Celsius Minnow-ET \*TV**  
**EX-91,2E EEEVV GMD-DOM**

4-10 365 49550 3.7 1857 3.2 1592

Lifetime 255910 3.7 9446 3.3 8481

**8th Dam: CMV Melwood Mindy-ET**  
**VG-85 VE+V GMD-DOM**

4-01 365 36341 3.6 1305 3.4 1239

**9th Dam: Briarpatch-R Misty-ET**  
**VG-85 +E+V GMD-DOM**

2-02 365 24680 4.8 1176 3.1 776

**10th Dam: Rilara Mars Las Ravena**  
**EX-91 EVEE GMD-DOM**

4-03 305 29030 4.6 1329



**View-Home Mrdian Iowa-ET VG-86 UUU+U DOM**

2-02 365 35670 3.8 1342 3.3 1166  
(2nd Dam of Lots 48A & 48B)

**LOT 48A Embryos**

\*Selling 5-#1 IVF DT female embryos  
sired by Jared

\*Parent avg. +2831G +926NMS

\*Embryos at Transova, MD

**Bovine Genomic Partners**  
11628 Old Belding Rd NE  
Belding, MI 48809  
616-822-0101

**Clear-Echo Jed Jared 745-ET**  
3127565651 12/17 PTA +2887GTPI  
+1739M +.07% +84F +.04% +65P  
+983NMS\$ +9.6PL +4.9DPR 2.78SCS  
+2.03T +1.92UDC +.94FLC 75%R  
Jedi X VG-86 DOM King Boy

**BGP Modesty Iowa City-ET**  
143969990 12/17 PTA +2775GTPI  
+2069M +67F +62P +868NMS\$ +7.7PL  
+2.4DPR +2.67T +3.18UDC +1.63FLC  
Sire: Bacon-Hill Pety Modesty-ET

**2nd Dam: (Pictured above)**  
**View-Home Mrdian Iowa-ET**  
**VG-86 DOM**  
2-02 365 35670 3.8 1342 3.3 1166

**3rd Dam:**  
**Pine-Tree 2149Robst 4846-ET**  
**VG-86 +VV+V DOM**  
2-04 365 32001 4.7 1520 3.4 1097  
**\*Offspring have sold for up to \$100,000**  
**\*Tremendous genomic transmitter!!**  
**\*8 sons in active AI including Monterey,**  
**Powerball-P, Missouri and Cashflow**

**4th Dam:**  
**Pine-Tree Zenith Sheen**  
**VG-87 VV+VV DOM**  
1-11 365 27883 3.9 1092 3.0 855

**5th Dam:**  
**Pine-Tree Martha Sheen-ET**  
**VG-86 VV+VV DOM**  
1-11 365 31210 4.2 1305 3.1 968

**6th Dam:**  
**Pine-Tree Missy Martha-ET**  
**VG-86 VVV+V DOM**  
2-02 365 34730 3.6 1266 3.1 1070

**7th Dam: Wesswood-HC Rudy Missy-ET**  
**EX-92.3E EEEEE GMD-DOM**  
4-11 365 40880 4.1 1665 3.4 1385  
Lifetime 119610 4.1 4885 3.4 4031  
**\*Global Cow of the Year 2014**

**8th Dam: Wesswood Elton Mimi**  
**EX-90 EEEEE GMD-DOM**  
3-05 365 35380 3.3 1160 3.0 1054

**9th Dam: Wesswood Mandingo Ivy**  
**VG-87 VEEVV**  
6-05 365 36330 3.6 1305 2.8 1018  
Lifetime 144060 3.4 4933 2.9 4139

**10th Dam: Wesswood Astro Matt Ester**  
**VG-87 VEEV GMD-DOM**  
6-08 365 31860 3.5 1125 2.9 921  
Lifetime 140110 3.6 5029 3.0 4158

**11th Dam: Wesswood Bell Claudette**  
**VG-87 GMD-DOM**  
8-04 365 38150 3.8 1443 2.8 1064  
Lifetime 280980 3.6 9997 2.9 8092

**LOT 48B Embryos**

\*Selling 6-#1 IVF DT female embryos  
sired by Jared

\*Parent avg. +2829G +941NMS

\*Embryos at Transova, MD

**Clear-Echo Jed Jared 745-ET**  
3127565651 12/17 PTA +2887GTPI  
+1739M +.07% +84F +.04% +65P  
+983NMS\$ +9.6PL +4.9DPR 2.78SCS  
+2.03T +1.92UDC +.94FLC 75%R  
Jedi X VG-86 DOM King Boy

**BGP Modesty Havana-ET**  
143956486 12/17 PTA +2770GTPI  
+1955M +76F +56P +899NMS\$ +7.6PL  
+3.0DPR +2.25T +2.81UDC +1.28FLC  
Sire: Bacon-Hill Pety Modesty-ET



**Trefle Chassep Doorman-ET EX-92 EEEVE**

*\*All-American & All-Canadian Jr 2yr-old 2016*

*(Dam of Lot 49)*

**LOT 49**

**Ms Avant-Garde D Chaka-ET**

3145066189 99%RHA-I  
Born 6/5/17 12/17 PTA +1935GTPI  
+3.42T +2.76UDC +1.12FLC

*\*Soon ready to IVF*  
*\*Chessep's highest G-type dau.*

**Avant-Garde Group**

468 Falls View Rd  
Dundas, ON L9H 5E2 CANADA  
905-308-1008

**Scientific Defiant-ET\*RC**

141123484 12/17 PTA +1643GTPI  
+539M +3.35T +2.35UDC +1.49FLC  
Braxton X EX-92 DOM Goldwyn

**Trefle Chassep Doorman-ET**

**3-06 EX-92 EEEVE 108725584C**  
12/17 PTA +2221GTPI +2.92T +2.11U  
2-02 305 18832 4.3 815 3.5 656  
3-02 246 23606 4.4 1040 3.5 838 RIP  
Sire: Val-Bisson Doorman-ET

**(Pictured above)**

*\*Nom. All-American Jr 3yr-old 2017*  
*\*Res. All-Canadian Jr 3yr-old 2017*  
*\*1st Jr 3yr-old and HM Intermediate*  
*Champ World Dairy Expo 2017*  
*\*All-American Jr 2yr-old 2016*  
*\*All-Canadian Sr 2yr-old 2016*  
*\*Nom. All-Am Spring Yrlng 2015*

**2nd Dam:**

**R-E-W Atwood Charmina-ET**  
**VG-87-CAN 88-MS**  
2-04 365 26636 4.7 1250 3.7 981  
4-01 365 31621 4.6 1451 3.5 1113

**3rd Dam:**

**Courtlane-UR Mac Charm-ET**  
**VG-85 +VG+V DOM**  
2-02 365 30980 4.0 1236 3.1 962

**4th Dam:**

**Regancrest S Chassity-ET**  
**EX-92 EEEVE DOM**  
2-01 365 36680 4.3 1567 3.3 1193  
3-10 365 42280 4.3 1798 2.7 1150  
*\*Sold for \$1,500,000 in package*  
*\*Dam of Gold Chip*

**5th Dam:**

**Regancrest Cinderella**  
**EX-92,2E EEEEE GMD-DOM**  
5-00 365 34220 4.1 1418 3.1 1074

**6th Dam:**

**Regancrest-PR Barbie-ET**  
**EX-92 EEEEE 94-MS GMD-DOM**  
2-06 365 31690 3.9 1237 3.3 1050  
*\*HM All-American Jr 3yr-old 2004*

**7th Dam: Regancrest Juror Brina-ET**

**EX-92 EEEVE GMD**  
4-04 365 40640 3.6 1478 2.8 1140  
*\*Res. Grand Champion Iowa State Fair*

**8th Dam: Regancrest Aerostar Bert-ET**

**EX-90 EEEVV GMD-DOM**  
5-02 365 37790 3.6 1357 3.2 1215  
Lifetime 109350 3.7 4031 3.3 3558

**9th Dam:**

**Regancrest Mark Chairman Bea**  
**EX-91,2E VEEE GMD-DOM**  
7-09 365 33830 3.8 1276 3.1 1052  
Lifetime 140130 4.1 5711 3.3 4616



*~More Holstein Fun in the Sun-Lido Edition~*



**Ms Atlees Goldwyn Ariel-ET  
EX-92 VEEEE**

*\*Res. All-American Jr 2yr-old 2009  
& Full sister to Atwood!  
(5th Dam of Lot 50)*



**Ms Annas Epic Andreyra-ET  
UG-85 U++UU**

2-08 365 31640 3.9 1219 3.5 1095  
(3rd Dam of Lot 50)

**LOT 50**

**Ri-Val-Re Guaranteed-ET**

3145286018 99%RHA-I  
Born 12/25/17

2/18 preliminary genomics +2917GTPI  
+1849M +.09% +94F +.09% +79P  
+1020NM\$ +8.6PL +3.8DPR 2.84SCS  
+1.72T +1.73UDC +.94FLC  
+239FE +3.4FI 6.0%SCE  
+1063CM\$

**Jerry Jorgensen**

4765 Moyer Rd  
Webberville, MI 48892  
517-712-0359

**Westcoast Guarantee-ET**

12371147C 12/17 PTA +2759GTPI  
+1371M +.11% +81F +.07% +60P  
+949NM\$ +9.7PL +4.5DPR 2.57SCS  
+1.08T +1.13UDC +.17FLC 76%R  
Boastful X GP-83 Tango

**Ri-Val-Re Jedi Annisa-ET**

3133102541 12/17 PTA +2685GTPI  
+2173M -.08% +57F +.02% +71P  
+813NM\$ +8.5PL +3.0DPR 2.99SCS  
+2.00T +1.76UDC +.96FLC  
"Beautiful bred heifer due this summer"  
Sire: Ri-Val-Re Jedi Annisa

**2nd Dam:**

Ri-Val-Re Distctn Ariel-ET  
GP-83 +VGG+

**3rd Dam: (Pictured above)**

Ms Annas Epic Andreyra-ET  
VG-85 V+VV  
2-08 365 31640 3.9 1219 3.5 1095

**4th Dam:**

Ms Ariel Freddie Anna-ET  
VG-85 V+VVV DOM

**5th Dam: (Pictured above)**

Ms Atlees Goldwyn Ariel-ET  
EX-92 VEEEE  
4-00 305 32570 4.3 1407 3.4 1098  
*\*Res. All-American Jr 2yr-old 2009  
\*Full sister to Atwood +3.78  
\*Mat. sister to Aftershock*

**6th Dam:**

MD-Delight Durham Atlee-ET  
EX-92 EEEEE GMD-DOM  
3-11 365 38290 5.5 2091 3.3 1249  
*\*Unanimous All-Am Sr. 3yr-old 2005*

**7th Dam:**

MD-Delight Strm Amberlee-ET  
VG-88 EVEVV DOM  
2-02 365 26170 3.7 969 3.2 835

**8th Dam:**

Ms Kingstead Chief Adeen-ET  
EX-94,2E EEEEE DOM  
3-05 310 30180 4.0 1209 3.4 1020  
Lifetime 100760 4.0 4010 3.6 3649  
*\*Nom. All-American Jr 3yr-old 2000  
\*Nom. All-American 4yr-old 2001  
\*2X All-Am Produce w/ All-World Sis.*

**Full sister to Adeen:**

Shoremar S Alicia-ET EX-97,3E  
-3X All-Canadian & 3X All-Am

**9th Dam:**

C Aitkenbrae Starbuck Ada  
EX-94,2E EEEEE DOM  
5-06 365 30055 3.5 1043 3.5 1049  
Lifetime 137740 3.4 4747 3.4 4649  
*\*2X All-American Produce of Dam  
\*All-American Sr 3yr-old 1990  
\*Res. All-Time All-Am Sr 3yr-old*

*~More Holstein Fun in the Sun-Lido Edition~*



**Royal Huell 173033**  
(Dam of Lot J1)

**LOT J1 Jersey**

**JX Royal Tyrion 2783 (3)**

3141554737 BBR 100  
Born 9/6/17 ID Eartag 2783  
1/18 PTA +221GJPI +746CMS\$  
+486M +.31% +85F +.11% +40P  
+7.7PL +2.8DPR 2.95SCS  
+28.2GJUI +1.4T

**#23 GJPI heifer overall!**

**#16 GJPI heifer under one year of age**

**\*Breed leading DPR & Fat on this  
Top 25 GJPI heifer!**

**\*Very outcrossed pedigree w/ Danish  
blood on both sides. Unlimited matings**

*Royal Genetics c/o Austin Allred*

11792 Road 12.5 SW  
Royal City, WA 99357  
509-932-9404

**JX Faria Brothers Tyrion (2)-ET**

3011610092 12/17 PTA +186GJPI  
+748M +.24% +84F +.10% +47P  
+638CMS\$ +4.3PL +.3DPR +1.0T  
Hulk X EX-92% Action

**Royal Huell 173033 (4)**

**1-11 VG-85%** 3133124178  
1/18 PTA +487M +56F +26P  
+391CMS\$ +2.4PL +1.9DPR 2.96SCS  
1-07 172 9680 5.7 565 3.9 346 RIP  
Sire: Faria Brothers Huell (4)-ET  
(Pictured above)

~More Holstein Fun in the Sun-Lido Edition~



### Sunset Canyon Lemvig Maid 4-ET EX-93%

5-02 365 30508 7.0 2150 4.3 1302

(5th Dam of Lot J2)

## LOT J2 Jersey

**JX Pine-Tree Uncle Luke Dell 1565 (3)-ET**

67671565 BBR 100

Born 6/2/17 ID Eartag 1565

1/18 PTA +202GJPI +731CMS

+1076M +78F +47P +8.1PL +1.3DPR

+18.6GJUI +1.5T +1.1LIV 2.94SCS

**#1 CMS & GJPI Uncle Luke dau.**

**\*Ready to IVF**

### *Pine-Tree Dairy*

8586 Benner Rd

Marshallville, OH 44645

330-466-8916

**JX Faria Brothers Uncle Luke (2)-ET**

3012575892 12/17 PTA +177GJPI

+1308M -.05% +56F -.05% +40P

+600CMS +6.4PL +3.8DPR +1.7T

Magnum X EX-92% Action

**Oaklane Chisel Della 2130-ET**

**2-02 VG-80%** 67742130

1/18 PTA +193GJPI +303M +71F

+32P +715CMS +9.5PL +23.5GJUI

-Fresh

Sire: Shan-Mar Hilario Chisel-ET

**\*Great donor: avg. 10.25 transferable embryos over 8 aspirations**

**2nd Dam:**

**Sunset Canyon Dzzler V Maid 2348**

**VG-87%**

1-10 305 19100 5.6 1066 3.7 702

2-11 305 24380 6.4 1566 4.0 983

**3rd Dam:**

**Sunset Canyon Valen I Maid 118-ET**

**VG-85%**

1-09 305 16700 5.1 860 3.7 612

**4th Dam:**

**Sunset Canyon Impuls L Maid 2-ET**

**VG-87%**

1-08 365 20468 5.7 1169 3.8 804

**5th Dam: (Pictured above)**

**Sunset Canyon Lemvig Maid 4-ET**

**EX-93%**

5-02 365 30508 7.0 2150 4.3 1302

**6th Dam:**

**Tenn Haug E Maid**

**EX-93%**

6-00 365 26014 7.0 1820 4.3 1107

~More Holstein Fun in the Sun-Lido Edition~



### JX Faria Brothers Harris Juvetus (5)-ET

5-02 365 30508 7.0 2150 4.3 1302

(2nd Dam of Lot J3)

## LOT J3 Jersey

JX Faria Brothers Stevens 382131 (4)-ET

3147345223 BBR 100 JH1F

Born 12/3/17 ID Eartag 382131

2/18 PTA +227GJPI +782CMS

+1484M +76F +65P +8.2PL +.0DPR

+15.1GJUI +1.3T 2.84SCS

**#9 GJPI heifer overall!**

**#4 GJPI heifer under one year of age!**

**\*Rare Stevens daughter to sell**

*Faria Brothers Dairy*

5601 FM 281

Dumas, TX 79029

**JX Faria Brad Stevens (5)**

3026052303 12/17 PTA +207GJPI

+1384M +.04% +73F +.07% +63P

+718CMS\$ +6.9PL +1.4T

Harris X VG-85% Visionary

**JX Faria Brothers Marlo 304662 (3)-ET**

3136545971

1/18 PTA +185GJPI +1530M +81F +62P

+649CMS\$ +5.2PL +.2DPR

-Due 4/1/18

Sire: JX Faria Brothers Marlo (2)-ET

**\*Full sister sold for a record \$78,000 at the Fiesta Sale 2017**

**\*She produced the #1 young sire of the breed!**

**2nd Dam:**

**JX Faria Brothers Harris Juvetus (5)-ET**

**VG-82%** 3124753488

2-00 296 22640 4.9 1118 3.7 833

**(Pictured above)**

**\*She transmits!**

**\*Has sold 4 daus. for \$184,000!**

~More Holstein Fun in the Sun-Lido Edition~



**JX Jer Bel Dale Abby (3) EX-91%**

7-07 305 22510 5.6 1253 3.8 866

(2nd Dam of Lot J4)

**LOT J4 Jersey**

**JX Pine-Tree Marlo Aleve (3)-ET**

67731492 BBR 93

Born 3/20/17 ID Eartag 1492

1/18 PTA +183GJPI +678CMS

+704M +78F +45P +7.1PL +1.1DPR

+12.6GJUI +.9T +1.6LIV 3.00SCS

**Brothers in AI include:**

1JE1054 Achiever +229GJPI +795CMS

Priapus 1620 +762CMS +10.0PL +3.9DPR

**Pine-Tree Dairy**

8586 Benner Rd

Marshallville, OH 44645

330-466-8916

**JX Faria Brothers Marlo (2)-ET**

3011610022 12/17 PTA +218GJPI

+1046M +.18% +87F +.05% +47P

+804CMS +9.1PL +.8DPR +1.6T

Magnum X EX-92% Action

**JX Jer Bel Abby Aleve (4)-ET**

119337662

1/18 PTA +161GJPI +645M +65F +41P

+601CMS +7.3PL +16.1GJUI

Sire: Missiska MacKenzie-ET

**\*9 offspring over 200GJPI**

**\*Incredible donor: avg. 7.3 transferable embryos over 24 aspirations**

**2nd Dam: (Pictured above)**

**JX Jer Bel Dale Abby (3)**

**EX-91%**

4-01 305 23610 5.2 1225 3.6 845

5-04 305 24540 4.4 1082 3.3 814

6-06 305 24570 4.6 1125 3.4 841

7-07 305 22510 5.6 1253 3.8 866

**3rd Dam:**

**Jer-Bel Iatola Allie**

**EX-90%**

4-06 305 20020 5.1 1027 3.8 761

5-09 305 17010 6.1 1041 4.0 686

7-00 303 20170 5.2 1051 3.8 774

**4th Dam:**

**Jer Bel Parade Aspen**

**EX-91%**

4-01 305 21600 4.2 900 3.5 752

**5th Dam:**

**Jer Bel Pitino Ashley**

**VG-88%**

4-02 305 19100 4.2 799 3.7 713



# HOLSTEIN ASSOCIATION TERMS AND CONDITIONS FOR PUBLIC SALES

EFFECTIVE MARCH 2, 1996 - Amended October 1, 1997, June 28, 2000, June 23, 2002, and March 26, 2010

**TERMS:** The terms of the sale are cash unless arrangements are made prior to the sale or are printed in the sale catalog. Only when the above conditions are met will the buyer be entitled to the warranties listed below. In no case will animals be released unless settlement is made with the clerk of the sale.

**RESPONSIBILITY:** The seller, buyer, and manager of this sale are obligated to comply with the provisions of these terms and conditions.

**EXPORT SALES:** Buyer assumes all responsibility for health tests required by the importing country.

**BIDS:** The highest bidder is the buyer. Bidding parties or their agents are responsible for all bids placed. Every animal or lot presented for bidding is pledged to absolute sale. In case of dispute, the animal or lot will again be put up for advance bids, and if there is no advance bid, the animal or lot will be sold to the person the auctioneer accepted the last bid from. In case two or more claim the bid, the auctioneer will indicate the party whose bid he recognized. Other claimants will be given an opportunity to increase the bid and bidding will be restricted to the two or more claimants.

**BY-BIDDING:** Bidding directly or indirectly by the sole owner of any animal or lot is prohibited unless the intention to bid is disclosed specific to each animal in the catalog and announced when the animal enters the ring. Bidding by any member of a partnership, syndicate, or other entity having an ownership interest in an animal or lot is permitted.

**TRANSFER OF OWNERSHIP:** For all Registered Holsteins<sup>SM</sup>, the transfer of ownership to the buyer will be recorded on the records of Holstein Association USA and a certificate of registration showing that transfer of ownership will be provided to the buyer free of charge. For embryos, the transfer of ownership to the buyer will be recorded on the records of Holstein Association USA free of charge to the buyer.

**RISK:** All animals located at sale site are at the purchaser's risk as soon as struck off, but will be cared for free of charge for a maximum of 24 hours following the end of the sale.

## WARRANTIES:

- 1) Each consignor warrants clear title to the animal or lot, and the right to sell same.
- 2) To the best of the seller's knowledge, each animal is sound and healthy in every respect and embryos have been recovered, processed, frozen, transferred and graded in keeping with IETS recommendations unless otherwise noted in the catalog or announced from the auction stand. Every precaution will be taken to represent the physical condition of each lot exactly as is known. Examination of all purchases should be made immediately after the purchase and before the close of the sale, and if found not to be as represented, complaint must be reported to the sale management before the close of the sale. In the event no complaint is filed, it is understood that the buyer assumes full ownership in the case of animals at sale site together with all risks, after which no representations of the seller can be challenged through the sale management. Heifers that never calved are in no way guaranteed as to the condition of their udders following calving.
- 3) **Breeding Warranty**  
The seller guarantees all animals to be breeders, but not beyond the purchase price, with the following understanding:
  - a. Males - Should any bull after reaching the age of fourteen months fail to prove a breeder after being used for two months on cows or heifers known to be breeders, the matter shall be reported in writing to the seller within three months of the sale date. The report must include the animal's examination record, a written statement of treatment, and a statement of the animals' inability to breed,

by a licensed veterinarian. The seller has the option to refund the purchase price or make other settlement that is satisfactory to the buyer. In either case the rights of ownership of the animal return to the seller. The seller makes no guarantees with respect to the ability to freeze semen.

- b. Females - All females are guaranteed to be breeders with the exception of:
  1. Cows over 7 years of age when sold;
  2. Cows and/or heifers carrying a pregnancy that is the result of an embryo transfer.

Report of a non-breeder must occur in writing within 3 months of the date of sale or before the animal reaches 21 months of age and must be submitted to the seller. The report must include the animal's examination record, a written statement of treatment, and a statement of the animals' inability to breed, by a licensed veterinarian. The seller has the option to refund the purchase price or make other settlement that is satisfactory to the buyer. In either case the rights of ownership of the animal return to the seller.

Females bred when sold and pronounced in calf are presumed to be pregnant but pregnancy is not guaranteed unless so announced. The seller makes no warranty that pregnant cows will deliver calves or that they will carry calves full term.

- c. If, after the sale, embryos or oocytes are recovered from a female or an attempt is made to superovulate her, this negates the breeding warranty unless there is a separate written agreement between buyer and seller.

**SHIPPING:** Assistance will be given in arranging shipping of the animals after the sale. All costs, risks and responsibility will be borne by the purchaser.

**PEDIGREE INFORMATION:** All production, classification, type and production summaries are current. Only information recorded on Holstein Association USA pedigrees is used. Any production or classification records supplied by the seller or consignor will be properly identified as provided by owner. Records in progress are identified as such.

**GENOMIC INFORMATION:** If genomic information on the animal or embryo is available, it must be dated and disclosed at or before the time of sale.

**EMBRYO TRANSFER:** All registered animals that have resulted from embryo transfer are identified with one of the following suffixes in the name: ET, ETS (from split embryo), or ETN (from nuclear transfer). If unregistered, the appropriate technology will be identified. Donor dams are identified.

**HEALTH WARRANTY:** The seller will provide an official health certificate to the buyer for each animal showing the results of all health tests made in preparation for this sale as required by the state where the cattle reside. Other health tests completed for this sale will be disclosed.

**ERRORS:** The material in this catalog has been carefully edited. If any errors or omissions are discovered, they will be announced. Such announcements take precedence over that printed in this catalog.

**ACCIDENT:** The sale management, the consignors, and the owner of the grounds will not be responsible in any case for the condition of the grounds or the behavior of the animals and disclaim any liability in the event of personal accident or property loss.

**LIMITATIONS OF WARRANTIES:** Warranties contained herein, unless terminated earlier, will cease upon the resale of an animal.







## Sale Consignor Index

AOT Genetics	18
Aurora Ridge Dairy	1
Avant-Garde Group	49
Bovine Genomic Partners	48A,48B
Comfort & Thurler	16A,16B
Double A Dairy	20
Elidon Tweed Farm, LLC	17A,17B
Faria Brothers Dairy	J3
Ferme Gillette Inc.	4
Garber & Wadel	5
Genosource	7,19,40,45-47
George, Brian	32
Hembury, Ron	10
Jorgensen, Jerry	3,6,9,15,50
Lang, Eric	27
McDonah, Neil	34
Misty-Moor Holsteins	31
North Florida Holsteins LLC	35
Peak Genetics	23,38
Pine-Tree Dairy	13,14,21,22,24,25,28,J2,J4
Progenisis LP	33,37,41,42
Richmond Farms Dairy	36
Riverview Farm	30
Royal Genetics	J1
Sheland Farms	2
Siemers Holstein Farms, Inc.	29
Westcoast Holsteins	11,12,26
Yoder & Swartzentruber	8
Yoder, Austin	39
Yoder, Troy	43,44

## Holstein Genetic Information-Live Lots Fun in the Sun-Lido Beach Edition

LOTS	BIRTH	NAME	GTPI	MILK	%F	FAT	%P	PRO	CFP	NM\$	CM\$	FEED	LIV	PL	SCS	DPR	HCR	CCR	FI	SCE	PTAT	UDC	FLC
1	11 23 2017	AURORA REASON 19595-ET	2944	1813	0.10	96	0.02	62	158	1037	1057	206	1.1	10.7	2.76	4.1	3.4	5.5	4.2	7.3	2.42	2.27	2.02
2	10 17 2017	SHELAND MOD BRIGHT BLAZE-ET	2927	2011	0.07	93	0.04	72	165	1005	1027	224	1.8	7.6	2.88	2.8	1.6	3.8	2.8	5.9	2.43	2.52	2.17
3	10 28 2017	RI-VAL-RE ACHVR JAZY-ET	2917	941	0.23	97	0.05	43	140	1043	1083	195	3.3	10.5	2.53	5.2	4.7	7.6	5.5	7.3	1.60	2.07	1.26
4	12 4 2017	GILLETTE ROBSON CLEAMAGIC	2916	1046	0.26	109	0.10	61	170	1062	1119	231	1.2	11.4	2.73	4.6	4.2	6.2	4.8	6.3	1.58	1.23	0.72
5	9 22 2017	WA-DEL-AG BOURBON GALA-ET	2896	2014	0.09	98	0.03	69	167	1006	1027	221	1.8	9.5	2.76	3.0	1.6	4.5	3.0	8.1	2.02	2.41	1.20
6	11 16 2017	RI-VAL-RE ACHVR PAULA-ET	2881	1258	0.24	113	0.06	54	167	1009	1043	222	2.6	8.6	2.78	3.5	3.1	4.8	3.7	7.4	1.54	2.07	1.08
7	9 8 2017	GENOSURCE MARLE 38143-ET	2878	1350	0.14	89	0.06	57	146	945	983	186	1.7	9.3	2.62	3.8	3.9	5.5	4.1	7.7	2.28	2.20	1.38
8	11 7 2017	STUNNING-M COPYCAT LEXUS-ET	2875	1401	0.21	108	0.07	65	173	973	1016	223	1.9	8.1	2.80	2.5	2.3	3.5	2.6	7.5	2.12	2.03	1.62
9	1 7 2018	RIVALREFARIA FRAZZ GIGI	2891	1889	0.02	76	0.04	67	143	1012	1042	184	2.7	11.2	2.57	4.2	3.8	5.6	4.4	7.0	1.83	2.12	0.81
10	12 12 2017	CHERRY-ACRES PINN LUJDEK-ET	2861	1622	0.06	79	0.05	64	143	1000	1030	197	3.7	10.7	2.83	4.0	1.8	4.7	3.7	6.9	2.08	2.05	1.76
11	9 4 2017	WESTCOAST IMAX FARIA 6141	2857	1931	0.04	85	0.03	67	152	927	947	196	0.7	8.2	2.83	3.3	3.2	4.5	3.5	7.0	2.36	2.37	1.60
12	10 7 2017	WESTCOAST GUARENTEE FARIA 626	2814	1888	0.05	85	0.06	72	157	968	1002	211	1.4	9.8	2.69	3.6	2.6	5.4	3.7	7.5	1.61	1.25	0.57
13	8 28 2017	PINE-TREE 774 MEDLE 7672-ET	2814	2077	0.00	79	0.03	70	149	1019	1040	200	5.2	10.3	2.77	2.5	1.8	4.1	2.7	5.8	1.34	1.74	0.92
14	9 4 2017	PINE-TREE 774 ACHIE 7686-ET	2787	1229	0.18	94	0.07	57	151	982	1022	210	3.4	9.1	2.78	3.0	1.6	3.9	2.9	7.0	1.20	1.83	1.13
15	9 21 2017	MS RH-VAL-RE WINDY ELECTRA-ET	2840	1463	0.17	100	0.03	54	154	1020	1042	215	3.8	9.3	2.87	4.1	4.9	6.5	4.7	6.4	1.03	1.75	1.14
16A	11 5 2017	COMFORT THRUR GUARANTE ROXY-E	2842	1879	0.01	73	0.07	74	147	996	1029	214	1.5	10.2	2.87	4.7	2.9	6.4	4.7	5.9	1.24	1.82	0.77
16B	12 9 2017	THURLER COMFRT FORTUN RIANA-ET	2892P	1153	0.05	57	0.08	57	114	910		145		10.4	2.62	5.0	3.0	7.1	5.0	7.2	3.03	3.14	1.47
17A	11 21 2017	EILDON-TWEED AGR WILA 2G-ET	2855	1152	0.17	89	0.06	52	141	989	1026	200	2.5	10.4	2.69	3.0	3.1	4.3	3.3	7.8	2.04	2.52	1.99
17B	11 18 2017	EILDON-TWEED AGR WILA 2E-ET	2829	1080	0.15	81	0.08	56	137	932	981	193	0.9	9.4	2.67	2.5	3.2	3.8	2.9	7.5	2.25	2.71	2.14
18	11 10 2017	AOT PIZAZZ MIRABEL-ET	2856	1971	0.02	82	0.01	62	144	955	961	192	1.9	9.1	2.95	2.9	3.0	4.9	3.3	5.7	2.31	2.60	2.08
19	11 6 2017	GENOSURCE SHAKEN 38390	2854	1506	0.09	81	0.03	55	136	927	951	173	1.0	9.7	2.73	4.3	2.9	5.9	4.3	6.6	2.23	2.68	1.92
20	2 23 2017	AARDEMA MODESTY 31002-ET	2847	1326	0.12	82	0.05	53	135	968	1013	185	3.5	10.1	2.87	4.4	3.0	5.5	4.3	6.2	1.79	2.51	1.70
21	10 30 2017	PINE-TREE 774 MODS 7758-ET	2847	1897	-0.01	69	0.03	65	134	969	985	186	3.8	10.0	2.94	3.0	2.3	5.1	3.3	7.1	2.21	2.86	1.98
22	8 7 2017	PINE-TREE 774 FRAZZ 7630-ET	2786	2063	0.05	90	0.02	66	156	976	992	199	4.1	9.9	2.73	2.8	3.7	3.6	3.1	7.5	1.30	0.94	1.12
23	11 3 2017	PEAK RKSTR IMAX 80791-ET	2812	1774	0.08	89	0.02	60	149	975	995	196	3.1	9.5	2.72	1.5	2.0	2.7	1.8	6.5	2.09	2.25	1.62
24	11 10 2017	PINE-TREE 7019 DUKE 7772-ET	2842	2014	0.03	82	0.06	76	158	932	963	210	0.8	9.3	2.81	3.0	2.8	4.8	3.3	9.2	2.15	1.97	1.04
25	8 17 2017	PINE-TREE 6809 MODE 7650-ET	2821	1473	0.10	82	0.04	55	137	942	963	190	3.9	8.4	2.86	3.1	1.8	3.5	2.9	6.9	2.52	2.80	1.60
26	8 24 2017	WESTCOAST SCRIPION GRCA004 610	2816	1137	0.13	77	0.06	53	130	887	929	172	0.9	9.1	2.61	4.2	2.8	4.9	4.1	7.3	2.22	2.19	2.01
27	10 15 2017	PENDING	2816	2036	0.07	95	0.06	76	171	929	960	223	-0.1	7.4	2.82	2.1	3.4	4.3	2.7	7.8	1.92	1.56	1.13
28	9 2 2017	PINE-TREE 6586 FRAZ 7683-ET	2814	1525	0.14	94	0.04	58	152	962	986	197	2.5	10.0	2.78	4.3	4.6	5.3	4.5	8.0	1.51	1.75	0.81
29	9 19 2017	SIEMERS SAMURI ROZ 28253-ET	2813	1736	0.03	73	0.01	55	128	913	926	162	1.0	9.9	2.78	5.9	4.5	8.1	6.0	7.4	1.56	2.10	0.90
30	9 10 2017	PRECISION BRBN LIGHTUP-ET	2786	3103	-0.14	78	-0.05	78	156	830	810	187	-0.7	6.1	2.92	1.8	2.2	3.5	2.2	8.9	2.99	2.37	1.87
31	9 25 2017	MISTY-MOOR BOURBON GINA-ET	2812	1400	0.10	79	0.07	62	141	833	873	178	0.1	6.6	2.73	3.2	2.6	3.4	3.1	8.2	2.70	2.46	2.23
32	12 18 2015	CO-VISTA DELTA LIZZY	2753	1516	0.15	99	0.05	59	158	894	915	220	-0.2	7.4	3.03	2.6	2.3	4.3	2.9	7.3	1.90	2.14	0.97
33	5 8 2017	PROGENESIS IMAX GERBRER	2811	1979	0.08	96	0.02	65	161	928	939	214	0.0	7.9	2.96	1.9	1.9	3.5	2.2	7.0	2.34	2.74	1.39
34	2 4 2017	PEAK HIBISCUS-ET	2813	989	0.09	62	0.06	46	108	909	951	133	3.4	10.5	2.51	4.2	3.2	5.9	4.3	6.2	2.29	2.54	1.65
35	7 23 2017	NO-FLA RAGEN JULIE 47267-ET	2791	2352	0.01	88	0.00	70	158	918	926	197	1.5	7.8	2.76	2.8	0.7	3.6	2.6	7.2	1.89	1.82	1.37
36	7 24 2016	RICHMOND-FD MINNEAPOLIS-ET	2773	1993	-0.03	67	0.05	73	140	928	954	195	3.2	9.4	2.87	3.1	2.4	4.9	3.3	6.9	1.59	1.88	1.28
37	6 12 2017	PROGENESIS IMAX WILDROSE	2804	1655	0.16	105	0.03	57	162	954	969	220	2.1	7.7	2.91	2.7	3.8	4.3	3.2	6.8	1.78	2.11	0.90
38	11 19 2016	PEAK GOLDLEAF-ET	2788	1968	0.02	77	0.03	69	146	861	880	178	0.6	7.6	2.94	4.4	3.5	5.1	4.4	7.4	2.04	2.22	0.76
39	3 5 2017	STUNNING IEDI CALISTA-ET	2760	1792	0.00	68	0.07	75	143	859	896	191	1.5	8.9	2.90	3.1	1.8	3.9	3.0	7.9	2.19	1.90	1.47
40	4 5 2017	TJR DETOUR TENILEY 37024	2785	1133	0.18	90	0.06	52	142	889	915	188	2.9	8.1	3.10	4.4	4.1	6.0	4.6	7.1	2.12	2.39	1.06
41	11 28 2017	PROGENESIS CATENA GUARAZ408	2807	1419	0.12	86	0.07	61	147	947	990	196	1.1	10.0	2.60	4.6	3.3	5.7	4.6	6.9	1.42	1.26	0.77
42	11 20 2017	PROGENESIS BETSY BOURAZ2378	2798	2357	-0.02	82	0.00	70	152	892	900	191	0.4	7.3	2.73	2.4	2.7	4.1	2.8	9.2	2.09	2.52	0.78
43	11 11 2017	TRAMILDA MARQUEE APLE-ET	2807	1112	0.04	51	0.07	50	101	948	984	140	3.5	12.1	2.70	5.4	3.7	6.5	5.3	6.0	1.61	2.78	1.24
44	11 12 2017	TRAMILDA MARQUEE ANGEL-ET	2803	1316	0.03	58	0.08	59	117	956	995	168	2.8	12.1	2.79	4.7	3.0	5.8	4.6	6.7	1.69	2.39	1.40
49	6 5 2017	MS AVANT-GARDE D CHAKA	1935	207	0.01	12	-0.01	4	16	90	90	2	-3.9	0.9	2.90	-1.4	1.2	-1.9	-1.0	9.9	3.42	2.76	1.12
50	12 25 2017	PENDING	2917P	1849	0.09	94	0.09	79	173	1020	1063	239		8.6	2.84	3.8	2.6	5.4	3.9	6.0	1.72	1.73	0.94

# MAKING YOUR MARKETING EASY

## Reasons to Advertise in the *HolsteinWorld Exclusive*

- Advertising Creates Traffic
- Advertising Attracts New Customers
- Advertising Encourages Repeat Business
- Advertising Generates Continuous Business
- Advertising is an Investment in Success
- Advertising keeps you in the Competitive Race
- Advertising keeps you Top-Of-Mind with Breeders
- Advertising gives your Farm a Successful Image
- Advertising Maintains Morale
- Advertising Brings in Big Bucks!



"We recognize that HolsteinWorld Exclusive is THE traditional publication for the breed and that many people look for it to hit their mailbox, particularly in certain parts of the country. Our association with HW to help us market our genetics is a valued relationship and we rely on that circulation to gain visibility. Though digital traffic is high we still aim to reach those who prefer a high quality hard copy in their hands!"

-Ethan Heinzmann, Golden Oaks Farm

## NEW BREEDER ADVERTISING RATES

Full page	\$695
2/3 page	\$525
1/2 page	\$460
1/3 page	\$345
1/4 page	\$230
1/6 page	\$175

Contact us for frequency discounts, contracts, commercial rates and more!

**Carol Moyer**

*cmoyer@dairybusiness.com | 315.329.6578*

Published every month except January and July. Advertising reservation deadline the 25th of the month, materials deadline the 1st, camera ready deadline the 8th, mailed the 15th of the month preceding.



**Please Bring This Catalog to the Sale!**

Catalogs by:

**Daniel Brandt**   
PEDIGREES & MARKETING

167 Valley Lane, Annville, PA 17003

Ph: 717-821-1238 Fax: 717-867-5493 E-mail: [brandtfive@comcast.net](mailto:brandtfive@comcast.net)