



INTERNATIONAL

OPPORTUNITY SALE

October 5, 2017 • Madison, Wisconsin



INTERNATIONAL OPPORTUNITY SALE

Thursday, October 5, 2017

5:30 - 6:30 pm Hospitality // Live Auction starts at 6:30 pm

Sale Headquarters:

Sheraton Madison Hotel // 608.251.2300

Welcome to the International Opportunity Sale!

It is with great pleasure we welcome you to the first edition of the International Opportunity Sale at the largest dairy gathering in the world. We have assembled an outstanding lineup with some of the world's most unparalleled genetics to ever be offered

This lineup features some of the highest GTPI and NM\$ heifers in the world along with heifers combining breed leading Type and UDC. Opportunities of this genetic caliber are a rarity to buy. These are the kind consignments that will be breed leaders and create the next generation, propelling your genetics to the next level.

We strived to select a unique set of cattle from maternal lines that consistently know how to make the great ones! These are the kind of animals that will bring international appeal and pay dividends for years to come.

We thank all the consignors to the International Opportunity Sale for their highest quality and appreciate their trust in us to market their best.

Be prepared to bid fast and bid last on Thursday, October 5th, on one of the best groups of cattle ever assembled and most importantly, buy with confidence!

Team GenoSource

INTERNATIONAL OPPORTUNITY SALE

Thursday, October 5, 2017

5:30 - 6:30 pm Hospitality // Live Auction starts at 6:30 pm

Sale Headquarters:

Sheraton Madison Hotel // 608.251.2300

Sale Staff

Mark Butz	319-350-1426	Scott Culbertson.....	507-923-1881
Dave Rama	607-435-0729	Scott Courtney	563-380-1318
Paul Trapp.....	715-869-7062	Lloyd Simon	715-803-5696
Kyle Demmer	563-451-5376	Jay Jauquet	920-639-6408
Tim Rauen	563-451-5866	Jim Vierhout	712-470-1202
Bill Rauen	563-607-0694	Amanda Hauck	570-765-0536
David Crack Jr	819-352-1670	Daniel Brandt	717-821-1238

Trucking Coordinator

Kyle Demmer..... 563-451-5376

Terms of Sale: Cash or good check sale day unless other arrangements have been made with sale managers prior to the sale. Buyers will be invoiced immediately with overnight payments expected by money wire or good check sent by priority mail. Buyers should make immediate arrangements with sellers for transportation after payment has been made to sale manager. Buyers are guaranteed an acceptable calf at time of pick up. Checks should be made payable to GS Auctions, PO BOX 65 Farley, IA 52046.

Sale Manager



AUCTIONS

PO BOX 65, Farley, IA 52046
gsauctionsllc@gmail.com
Tim Rauen: 563-451-5866
Kyle Demmer: 563-451-5376

Sale Host



GenoSource

2188 78th Street, Blairstown, IA 52209
www.genosource.com | timrauen@genosource.com
Tim Rauen: 563-451-5866 | Kyle Demmer: 563-451-5376
Mark Butz: 319-350-1426 | Amanda Hauck: 570-765-0536

Online Bidding



Live broadcasting by Cowbuyer

Aaron Ray Tompkins 336-363-4639
www.cowbuyer.com

* You must pre-register to bid online,
be sure to sign up prior to the
start of the auction!



Genosource Royal 40055-ET

Sells as Lot 1

LOT 1: GENOSOURCE ROYAL 40055-ET

Born 4/26/2017 Reg. 840003142704160

GTPI +2912 (8/2017)

PTA +1792M +96F +66P

PTA +1000NM +0.1%F +0.04%P

PTA +8.6PL 3.00SCS +2.6DPR 3.3%DCE 7.4%SCE

PTA +2.33T +2.72UDC +2.18FLC

+228FE +2.6FI +4.2LIV +1032CM

2nd Heifer to ever sell over +2900G & +1000NM

A rare offering with HUGE earning potential!!

#12 GTPI Heifer of the Breed (8/2017)

Consigned by:
MB-Lucky Lady, Durrer Dairy, & Genosource
563-451-5866 Tim

BACON-HILL PETY MODESTY-ET 3013654627 TY

GTPI +2838

PTA +1800M +91F +61P 79%R 8/2017

PTA +957NM +0.09%F +0.02%P 100%US

PTA +7.9PL 3.04SCS +2.6DPR +3.1%DCE

PTA +2.10T +2.64UDC +2.17FLC 8/2017

FARNEAR READY ROAMA-ET 3014494820

GP-84 +VV++ 3-00 GTPI +2764

PTA +1863M +88F +67P 80%R 8/2017

PTA +835NM +0.07%F +0.03%P

PTA +5.6PL 2.95SCS +1.6DPR 4.9%DCE

PTA +2.30T +2.25UDC +2.07FLC 78%R 8/2017

2-05 2 179 17980 5.6 1004 3.1 563 Inc

11 offspring over +900NM

SIEMERS MOGUL PETY 3010660326 TY

GTPI +2414

BACON-HILL SUPRS MODESTY-ET 3010945893

VG-85 DOM GTPI +2476

2-01 3 305 31181 3.8 1911 3.0 924

BACON-HILL MONTROSS-ET 71703339

TV TL TY TD

EX-92 EEVEE 4-08 GM GTPI +2773

FARNEAR READY FOR ADEEN-ET 69822350

EX-91 EEVEE 6-04 2E DOM GTPI +2317

3-10 2 365 45170 4.0 1825 3.5 1580

1st Iowa Protein

2-05 2 365 33080 4.0 1311 3.6 1203

5-01 2 271 26970 4.2 1134 3.2 863 Inc

3rd - 9th Dams:

Farnear Shot Of Adeen-ET VG-87 GMD DOM

2-03 2 365 38580 3.6 1373 3.3 1286

Applouis Buckeye Ada-ET VG-88 GMD

2-07 2 365 29641 3.5 1041 3.4 999

La-Foster Adam Arlene-ET VG-86 GMD

2-06 2 365 30120 3.5 1046 3.6 1073

MD-Delight Durham Atlee-ET EX-92 GMD DOM

3-11 2 365 38389 5.5 2090 3.3 1250

All-American Senior 3-Year-Old 2005

MD-Delight Strm Amberlee VG-88 DOM

2-02 2 365 26170 3.6 969 3.2 835

Ms Kingstead Chief Adeen-ET 2E-94 DOM 7*

3-05 2 310 30180 4.0 1209 3.6 1077

2X Member All-American Produce of Dam

Nom. All-American Jr. 3-Year-Old & 4-Year-Old

Dam of 65 VG & 36 EX offspring

C Aitkenbrae Starbuck Ada 2E-94 DOM

2-05 2 362 25000 3.6 908 3.4 845



Farnear Ready For Adeen-ET EX-91 DOM

Grandam of Lots 1 & 2



Farnear Shot Of Adeen-ET VG-87 GMD DOM

3rd Dam of Lots 1 & 2

LOT 2: GENOSOURCE 40556 ROMANCE-ET

Born 7/14/2017 Reg. 840003142704661

GTPI +2828 (9/2017)
 PTA +1320M +85F +54P
 PTA +940NM +0.14%F +0.04%P
 PTA +9.9PL 2.64SCS +2.8DPR +4.6%DCE +7.5%SCE
 PTA +2.12T +2.18UDC +1.61FLC
 +194FE +3.5FI +1.9LIV +974CM
 #7 GTPI *Legendary in the Breed*

Consigned by:
 MB-Lucky Lady, Durrer Dairy, & Genosource
 563-451-5866 Tim

WELCOME LEGENDARY 2870-ET 3125066459 TL TD TV TY

GTPI +2682
 PTA +1061M +71F +39P 79%R 8/2017
 PTA +834NM +0.12%F +0.02%P 100%US
 PTA +11.0PL 2.66SCS +3.8DPR 6.6%DCE
 PTA +1.95T +1.42UDC +2.01FLC 78%R 8/2017

FARNEAR READY ROAMA-ET 3014494820

GP-84 +VV++ 3-00 GTPI +2764
 PTA +1863M +88F +67P 80%R 8/2017
 PTA +835NM +0.07%F +0.03%P
 PTA +5.6PL 2.95SCS +1.6DPR 4.9%DCE
 2-05 2 179 17980 5.6 1004 3.1 563 Inc
 11 offspring over +900NM

S-S-I STERLING DAMARIS-ET 3011538150 TV TL TY TD

GTPI +2517
MS WELCOME CAMERON LIA-ET 3010945849
 VG-88
 2-02 3 305 24823 3.9 968 3.0 757

BACON-HILL MONTROSS-ET 71703339

TV TL TY TD
 EX-92 EEVEE 4-08 GM GTPI +2773
FARNEAR READY FOR ADEEN-ET 69822350
 EX-91 EEVEE 6-04 2E DOM GTPI +2317
 3-10 2 365 45170 4.0 1825 3.5 1580
 1st Iowa Protein
 2-05 2 365 33080 4.0 1311 3.6 1203
 5-01 2 271 26970 4.2 1134 3.2 863 Inc

3rd - 9th Dams:

Farnear Shot Of Adeen-ET VG-87 GMD DOM

2-03 2 365 38580 3.6 1373 3.3 1286

Applouis Buckeye Ada-ET VG-88 GMD

2-07 2 365 29641 3.5 1041 3.4 999

La-Foster Adam Arlene-ET VG-86 GMD

2-06 2 365 30120 3.5 1046 3.6 1073

MD-Delight Durham Atlee-ET EX-92 GMD DOM

3-11 2 365 38389 5.5 2090 3.3 1250

All-American Senior 3-Year-Old 2005

MD-Delight Strm Amberlee VG-88 DOM

2-02 2 365 26170 3.6 969 3.2 835

Ms Kingstead Chief Adeen-ET 2E-94 DOM 7*

3-05 2 310 30180 4.0 1209 3.6 1077

2X Member All-American Produce of Dam

Nom. All-American Jr. 3-Year-Old & 4-Year-Old

Dam of 65 VG & 36 EX offspring

C Aitkenbrae Starbuck Ada 2E-94 DOM

2-05 2 362 25000 3.6 908 3.4 845



Blumenfeld Monterey 4825-ET

Dam of Lot 3

LOT 3: SIMPLE-DREAMS 4825 F2751-ET

Born 7/19/2017 Reg. 840003143013365 99%RHA

GTPI +2886 (9/2017)

PTA +1902M +83F +57P

PTA +970NM +0.05%F +0.01%P

PTA +10.0PL 2.56SCS +3.7DPR 4.1%DCE 7.4%SCE

PTA +2.23T +1.90UDC +1.97FLC

+169FE +4.2FI +2.9LIV +985CM

Pedigree has NO Mogul!!

Consigned by:

Jim Vierhout

712-470-1202

MELARRY JOSUPER FRAZZLED-ET 74261651 TV

TL TY TD 99%RHA

GTPI +2788

PTA +2502M +100F +76P 79%R 8/2017

PTA +964NM +0.03%F +0.00%P 100%US

PTA +8.0PL 2.67SCS +1.0DPR 5.7%DCE

PTA +1.18T +1.44UDC +0.87FLC 78%R 8/2017

UECKER SUPERSIRE JOSUPER-ET 70726929 99%-I

TY

VG-86-3YR-CAN GTPI +2728

MELARRY SHOTGLASS FRAZZLE 72292872

VG-85 GTPI +2414

2-00 2 365 33740 4.1 1388 3.3 1099

BLUMENFELD MONTEREY 4825-ET 3127411397

99%-I TL TD

GTPI +2562

PTA +1092M +57F +38P 79%R 8/2017

PTA +719NM +0.06%F +0.02%P

PTA +7.3PL 2.57SCS +2.3DPR 4.6%DCE

PTA +1.94T +1.80UDC +1.55FLC 77%R 8/2017

2-05 2 119 11068 4.1 449 2.8 309 Inc

Last test 92# 4.2F 2.9P

VIEW-HOME MONTEREY-ET 69087180 99%-I TV

TL TY TD

GTPI +2561

FARNEAR MASSEY ELLIE 71290968

VG-86 V++VV 3-06 GTPI +2281

3-04 2 326 34540 3.3 1149 3.1 1074

2-02 2 364 27710 3.98 1068 3.3 924

3rd - 12th Dams:

Morningview Super Ellie-ET 2E-91 DOM

5-05 3 305 33270 3.4 1140 3.0 990

Morningview Shtle Madilyn 2E-94 GMD DOM

6-10 2 365 46580 3.8 1756 3.1 1442

LIFE 1670 161280 4.1 6535 3.3 5275

Region 6 Elite Performer

Morningview Chmpn Martha-ET 2E-92 GMD

5-05 2 365 38410 3.7 1416 2.9 1129

LIFE 1521 134520 3.9 5225 3.0 416

Crockett-Acres Drhm Mae-ET VG-87 GMD DOM

2-04 3 365 29760 4.3 1294 3.4 1026

Nom. International Cow of the Year 2009

Wauregan Maebell-ET 2E-91 GMD DOM

2-06 3 365 36440 4.1 1493 3.6 1306

Whittier-Farms Lead Mae-ET 3E-95 GMD DOM

8-07 3 357 41270 4.8 1962 3.5 1440

LIFE 1613 126960 4.3 5473 3.6 4597

Raymau Bstar Monica VG-89 EX-MS DOM

Juniper Jason Maria VG-86

2-03 2 365 20260 4.3 869 3.6 736

JDM-Pride Valiant Maggie EX-91 GMD DOM

6-00 2 365 35540 4.1 1442 3.3 1186

La-Ko-Land Penstate Sadie VG-87 GMD DOM

7-03 2 322 23781 3.7 888 3.2 769

LIFE 166090 3.5 5732 3.2 2853



No-Fla Stoic Anne 40873-ET GP-83 VG-MS 2Y

Dam of Lot 4

LOT 4: SEAGULL-BAY AN ALEXANDRA-ET

Born 6/6/2017 Reg. 840003138735879 98%RHA

GTPI +2827 (8/2017)
 PTA +1890M +82F +68P
 PTA +965NM +0.04%F +0.04%P
 PTA +9.8PL 2.75SCS +3.2DPR 4.5%DCE 7.7%SCE
 PTA +1.62T +1.76UDC +1.43FLC
 +203 FE +3.3 FI +3.0 LIV +991CM
Outcross Pedigree - No Modesty, Jedi, Frazzled!
#1 GTPI & NM Matters in the World (8/17)
+1287 DWP\$ +205 WTS

Consigned by:
 Seagull Bay
 208-339-0904

TRIPLECROWN JW MATTERS-ET 3129038181 TL TYTV 99%-I

GTPI +2707
 PTA +1591M +77F +57P 78%R 8/2017
 PTA +864NM +0.06%F +0.04%P 100%US
 PTA +8.5PL 2.71SCS +2.8DPR 3.7%DCE 7.4%SCE
 PTA +1.23T +1.34UDC +1.63FLC 76% 8/2017

LADYS-MANOR OCTOBERFEST-ET 99%-I TL TY TV

GTPI +2487
S-S-I MOONRY MYESHA 9071-ET 3012130340 99%-I
 VG-85 VVV+V 2-10 DOM GTPI +2577
 2-01 2 365 33260 4.0 1330 3.3 1089

3rd - 4th Dams:

No-Fla Massey 30194-TW VG-85
 3-06 3 305 30810 3.6 1114 3.4 1043
 2-01 3 365 26990 3.7 1010 3.4 920
No-Fla Oman Liana VG-85 VG-MS
 4-03 3 305 23300 4.7 1091 3.5 818

NO-FLA STOIC ANNE 40873-ET 3129448990 96%RHA-I

GP-83 G+++V 2-03 GTPI +2598
 PTA +1658M +62F +59P 78%R 8/2017
 PTA +798NM +0.00%F +0.03%P
 PTA +8.3PL 2.69SCS +1.4DPR 5.9%DCE
 PTA +1.52T +1.80UDC +0.90%FLC 76%R 8/2017
 1-10 3 239 21980 3.3 731 3.3 718 Inc
Prolific Embryo Producer!

SPRUCE-HAVEN STOIC-ET 71630809 99%-I TV TL TYTD

GTPI +2512
NO-FLA SPERSIRE 36193-TW-ET 93%RHA
 GP-83 V++GV 3-00 GTPI +2470
 1-11 3 312 29840 3,3 992 3.3 979



Triplecrown-AL Monty 929-ET VG-85 VG-MS

Dam of Lot 5



Ronelee Boliver Dreary-ET VG-86 DOM

3rd Dam of Lot 5

LOT 5: TRIPLECROWN-AL JD JEWEL-ET

Born 1/15/2017 Reg. 840003133064094 99%

GTPI +2846 (8/2017)
 PTA +1802M +81F +65P
 PTA +983NM +0.05%F +0.04%P
 PTA +11.4PL +2.95SCS +2.8DPR 3.2%DCE 7.2%SCE
 PTA +2.42T +2.30UDC +1.90FLC
 +198FE +2.7FI +2.3LIV +1003CM
 #10 NM Jedi 8/2017
 Sells Ready to IVF

Consigned by:
 Twin Ridge Genetics
 Ashley 815-370-8713
 Josh 801-404-1627

S-S-I MONTROSS JEDI-ET 3123886035 99% TV TL TY TD

GTPI +2821
 PTA +2624M +76F +88P 80%R 8/2017
 PTA +888NM -0.08%F +0.02%P 100%US
 PTA +7.5PL 2.94SCS +2.7DPR 4.1%DCE
 PTA +2.06T +1.71UDC +1.35FLC 79%R 8/2017

TRIPLECROWN-AL MONTY 929-ET 74186068 99%-I TL TD

VG-85 +V++V 2-07 GTPI +2612
 PTA +168M +62F +24P 81%R 8/2017
 PTA +772NM +0.21%F +0.07%P
 PTA +8.9PL 2.92SCS +2.0DPR 3.0%DCE
 PTA +3.11T +3.13UDC +2.03FLC 82%R 8/2017
 1-11 3 325 27450 3.8 1047 3.4 937 Inc

BACON-HILL MONTROSS-ET 71703339 TV TL TY TD

EX-92 EEVE 4-08 GM GTPI +2773
S-S-I SUPRSIRE MIRI 8679-ET 3011538078
 VG-88 EX-MS DOM GTPI +2689
 2-00 3 365 39810 3.5 1402 3.1 1234

VIEW-HOME MONTEREY-ET 69087180 99%-I TV TL TY TD

GTPI +2561
MS DREARY DELOREAN-ET 72106864
 VG-88-4YR-CAN GTPI +2341
 3-09 2 342 28792 4.8 1378 3.3 961
 2-07 2 270 16883 4.6 776 3.7 622
 Dam of Triplecrown-AL Divine-ET, former #1 GTPI Heifer on 1/15 run, sold for \$295,000 in Spring Fling

3rd - 9th Dams:

Ronelee Boliver Dreary-ET VG-86 VG-MS DOM
 2-04 2 365 27970 3.9 1102 3.5 989

Ronelee Outside Dabble-ET 2E-91 GMD DOM
 5-03 3 365 44530 3.6 1612 3.1 1397
 LIFE 2021 185730 3.6 6757 3.2 5966

Dam of popular AI sires Domain & Durable

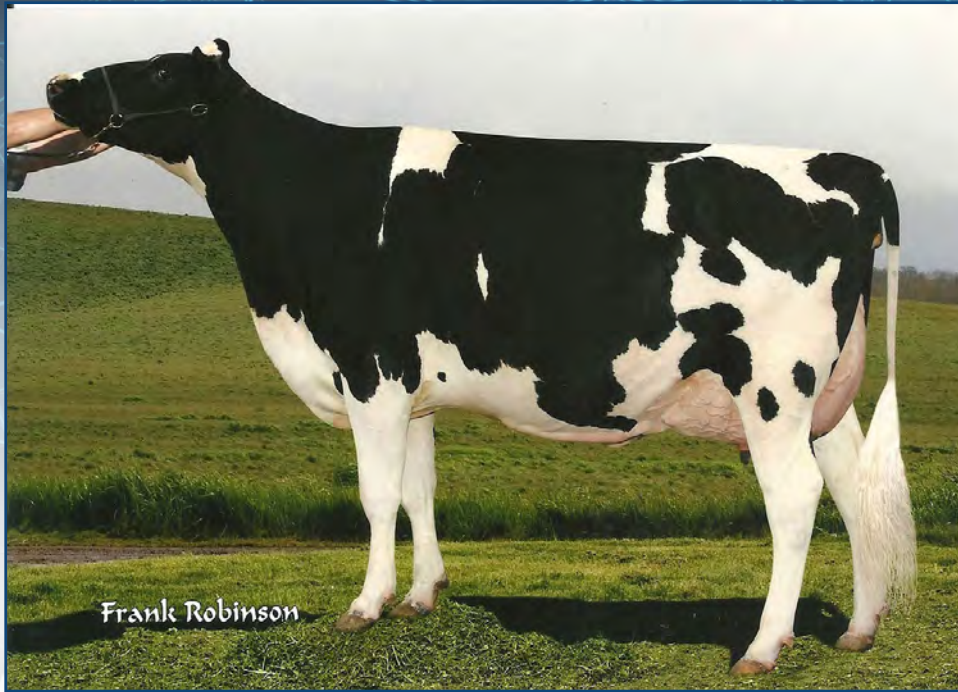
Ronelee Rudolph Dimple 2E-93 DOM
 5-08 3 365 45290 3.7 1713 3.1 1428
 LIFE 1582 164010 3.6 5900 3.2 5284

Select Mark Dolly 4E-95 GMD DOM
 6-07 3 365 45870 4.0 1846 3.1 1431
 LIFE 3295 276300 3.6 9992 3.2 8964

Select Southwind Dinah 2E-91
 5-11 3 365 30080 3.7 1124 3.3 981

Select Mars Tony Diana VG-86 VG-MS
 3-04 2 365 26200 4.2 1112 3.5 916

Dinah Select Wayne Dixie VG-85
 3-07 2 305 23460 4.0 935 3.4 789



Hol-Star Baxter Terre-ET VG-88 DOM

3rd Dam of Lot 6

LOT 6: CAL-ROY-AL JUDY 4734-ET

Born 2/10/2017 Reg. 73643285 98%RHA TL TD

GTPI +2817 (8/2017)
 PTA +1388M +125F +58P
 PTA +949NM +0.26%F +0.06%P
 PTA +6.1PL 3.0SCS +0.5DPR 3.8%DCE 6.8%SCE
 PTA +2.20T +2.11UDC +1.35FLC
 +247FE +1.5FI +1.2LIV +977CM
#1 GTPI AltaFlyWheel of the Breed (8/2017)
*Unique Sire Stack // Sister to Yoda // Sells Ready to IVF
 Big-Time Feed Efficiency!*

Consigned by:
 Cal-Roy-Al Holsteins
 209-649-8626

Sister to Lot 6:
29H018545 Cal-Roy-Al Yoda
 GTPI +2895 +1003NM +188CFP
Jedi x Cal-Roy-Al Jennie 4713-ET

PEAK ALTAFLYWHEEL-ET 3129128750 96%-I TV TL TY TD

GTPI +2664
 PTA +1054M +78F +48P 79%R 8/2017
 PTA +799NM +0.13%F +0.06%P 100%US
 PTA +7.2PL 2.78SCS +2.2DPR 2.3%DCE
 PTA +2.05T +1.44UDC +1.44FLC 78%R 8/2017

VIEW-HOME MONTEREY-ET 69087180 99%-I TV TL TY TD

GTPI +2561
NO-FLA SHINE-ET 3012016619 93%RHA TV TL TY TD
 GP-83 VV+V+ 2-07 DOM GTPI +2468
 2-02 2 365 32040 3.7 1180 3.2 1023

3rd - 8th Dams:
Hol-Star Baxter Terre-ET VG-88 DOM
 2-02 3 365 32130 4.5 1455 3.2 1039
Hol-Star Outside Tere-ET EX-90 EX-MS DOM
 5-06 2 365 31860 2.8 900 3.2 1017
 LIFE 1486 122350 3.7 4573 3.3 4054
Hol-Star Teary Durham EX 90 EX-MS DOM
 5-01 3 365 42310 4.0 1712 3.4 1448
 LIFE 1330 122630 3.6 4448 3.5 4257
Hol-Star Formation Teacup VG-86
 2-03 3 305 25160 3.5 882 3.0 767
Hol-Star Emory Tease VG-87
 6-07 3 365 34840 3.0 1062 3.1 1076
 LIFE 1545 142250 3.2 4560 3.0 4280
Hol-Star Tesk Jee VG-88
 6-05 2 305 27220 3.4 917 3.1 857
 LIFE 1433 109840 3.3 3615 3.1 3421

CAL-ROY-AL JENNIE 4713-ET 73643264 TL TD

GP-81 ++FG+ 2-03 GTPI +2661
 PTA +931M +111F +46P 77%R 8/2017
 PTA +824NM +0.27%F +0.06%P
 PTA +5.3PL 2.96SCS +0.5DPR 5.2%DCE
 PTA +1.94T +2.12UDC +1.39FLC 79%R 8/2017
 2-03 3 123 9220 4.1 3.75 2.9 271 Inc

WOODCREST MOGUL YODER-ET 72254526 TV TL TY TD

EX-90 EVEV 4-05 GM GTPI +2710
HOL-STAR LINER TEROKA-ET 72064309 TL TD
 GTPI +2385
 PTA +1688M +86F +46P 78%R 8/2017
 PTA +590NM +0.08%F -0.02%P
 PTA +3.0PL 3.00SCS -2.1DPR 6.6%DCE
 PTA +2.07T +1.90UDC +1.24FLC 78%R 8/2017
Sons in AI



View-Home Uno Hope-ET EX-92

Dam of Lots 7 & 8



View-Home Uno Hope-ET EX-92

Dam of Lots 7 & 8

LOT 7: BGP DELTA HONEY 2-ET

LOT 8: BGP DELTA HONNA-ET

Born 6/7/2017 Reg. 143856450

GTPI +2814 (8/2017)
 PTA +1468M +82F +54P
 PTA +884NM +0.10%F +0.03%P
 PTA +8.4PL 2.74SCS +2.7DPR 3.7%DCE 6.4%SCE
 PTA +2.76T +2.63UDC +1.82FLC
 +185FE +3.0FI +0.9LIV +908CM
Donor Dam & Open
Housed at Gen Start, WI

Born 6/14/2016 Reg. 143856740

GTPI +2835 (8/2017)
 PTA +902M +91F +47P
 PTA +904NM +0.21%F +0.07%P
 PTA +8.1PL 2.70SCS +3.3DPR 4.5%DCE 6.8%SCE
 PTA +2.74T +2.59UDC +1.96FLC
 +201FE +3.6FI +0.4LIV +946CM
Donor Dam & Open
Housed at Gen Start, WI

Consigned by:
 Jerry Jorgensen
 517-712-0359

MR MOGUL DELTA 1427-ET 72128216

TV TL TY TD
 GTPI +2849
 PTA +1817M +97F +57P 98%R 8/2017
 PTA +0.10%F +0.01%P 100%US
 PTA +8.0PL 2.79SCS +3.7DPR 5.0%DCE
 PTA +1.95T +2.51UDC +1.41FLC 95%R 8/2017

MOUNTFIELD SSI DCY MOGUL-ET 3006972816 TR

TV TL TY TD
 EX-91 EEVE 5-03 GM GTPI +2504
MISS OCD ROBST DELICIOUS-ET 3006989479
 VG-87 +EV+V 3-05 DOM
 2-05 2 305 25780 3.5 908 3.1 793

3rd - 7th Dams:

Pine-Tree Zenith Sheen VG-87 VG-MS DOM
 1-11 3 365 24500 3.9 956 3.2 786
Pine-Tree Martha Sheen-ET VG-86 VG-MS DOM
 1-11 3 365 31210 4.2 1305 3.3 1027
Pine-Tree Missy Martha-ET VG-86 VG-MS DOM
 2-02 3 365 34730 3.6 1266 3.1 1070
Pine-Tree Outside Mint-ET VG-87 DOM
 4-02 3 365 33710 4.2 1407 3.1 1059
Wesswood-HC Rudy Missy-ET 3E-92 GMD DOM
 4-11 3 365 40880 4.1 1665 3.4 1385
Global Cow of the Year 2014
18 sons & 107 grandsons in AI

VIEW-HOME UNO HOPE-ET 72364645 TL TD

EX-92 EEEEE 4-03 DOM GTPI +2487
 PTA -259M +59F +18P 83%R 8/2017
 PTA +640NM +0.26%F +0.10%P
 PTA +7.5PL 2.72SCS +2.8DPR 4.4%DCE
 PTA +2.61T +2.08UDC +1.36FLC 83%R 8/2017
 2-00 2 365 25810 4.7 1209 3.7 948

AMIGHETI NUMERO UNO-ET

7990915143ITA TV TL TY TD
 GM GTPI +2363
PINE-TREE 2149ROBST 4846-ET 69804610
 VG-86 VEV+V 3-01 DOM GTPI +2398
 2-04 3 365 32000 4.8 1520 3.4 1096
Numerous sons in AI including Monterey & Powerball-P



Pine-Tree Monica Planeta-ET VG-86 DOM

3rd Dam of Lot 9

LOT 9: IVF SESSION x NO LIMIT

*Unlimited Opportunity's from a rare offering
Your chance to make +2900G +1000NM PA's from the Sire of Your choice!
Minimum 8 transferable embryos
First IVF Session after Sale*

*Consigned by:
Pine-Tree Dairy
330-466-8916*

MUTUALLY AGREEABLE SIRE

SANDY-VALLEY NO LIMIT-ET 3142704159

GTPI +2870
PTA +1015M +101F +58P 74%R 8/2017
PTA +1020NM +0.23%F +0.10%P
PTA +10.2PL 2.66SCS +3.4DPR 4.9%DCE 6.7%SCE
PTA +1.25T +2.03UDC +0.91FLC 73%R 8/2017
+230FE +3.6FI +3.6LIV +1075CM -0.78 STA
#1 NM Delta Female of the Breed (8/2017)

MR MOGUL DELTA 1427-ET 72128216

TV TL TY TD
GTPI +2849
SANDY-VALLEY SS PSYCH-ET 72471431
GTPI +2549
PTA +1131M +84F +56P 83%R 8/2017
PTA +785NM +0.15%F +0.08%P
PTA +7.5PL 2.63SCS +0.8DPR 5.6%DCE
PTA +1.17T +0.80UDC -0.17FLC 80% 8/2017

3rd - 8th Dams:

Pine-Tree Monica Planeta-ET VG-86 DOM
2-01 2 365 30680 3.7 1146 3.6 1112
Pine-Tree Monica Suela-ET VG-87 VG-MS DOM
1-11 3 305 27630 3.4 935 3.4 927
Pine-Tree Missy Monica-ET VG-85 GMD DOM
4-11 3 305 36010 3.5 1248 2.9 1034
*Full sister to Pine-Tree Missy Martha, grandam to Ammon-Peachey Shauna
Finley maternal sister is the dam of Sid*
Wesswood-HC Rudy Missy-ET 3E-92 GMD DOM
4-11 3 365 40880 4.1 1665 3.4 1385
*Global Cow of the Year 2014
18 sons & 107 grandsons in AI*
Wesswood Elton Mimi EX-90 EX-MS GMD DOM
3-05 2 365 35380 3.3 1160 3.0 1054
Wesswood Mandingo Ivy VG-87 VG-MS
6-05 2 365 36330 3.6 1305 2.8 1018
LIFE 1835 144060 3.4 4933 2.9 4139
Wesswood Astro Matt Ester
VG-87 VG-MS GMD DOM
LIFE 1847 140,110 3.6 5029 3.0 4158



EDG Ruby Uno Rae 2054-ET EX-91 EX-MS DOM
Grandam of Lot 10



TJR Sweet Baby Rae-ET
Sells as Lot 10

LOT 10: TJR SWEET BABY RAE-ET

Born 4/26/2017 Reg. 840003142704159 #40054

GTPI +2897 (8/2017)

PTA +1975M +81F +65P

PTA +1015NM +0.03%F +0.02%P

PTA +10.1PL 2.89SCS +4.2DPR 4.1%DCE 6.3%SCE

PTA +1.91T +2.23UDC +1.65FLC

+204FE +4.5FI +4.0LIV +1040CM

#1 NM Heifer to ever sell at public auction!

#24 GTPI Heifer of the Breed (8/2017)

Full brother is #1 Modesty Bull in the Breed (+2939GTPI +1039NM)

Consigned by:

TJR Genetics

563-451-5866 Tim

BACON-HILL PETY MODESTY-ET 3013654627 TY

GTPI +2838

PTA +1800M +91F +61P 79%R 8/2017

PTA +957NM +0.09%F +0.02%P 100%US

PTA +7.9PL 3.04SCS +2.6DPR +3.1%DCE

PTA +2.10T +2.64UDC +2.17FLC 8/2017

OCD DELTA RAE 34906-ET 3131669070

GTPI +2804

PTA +1223M +85F +49P 78%R 8/2017

PTA +941NM +0.14%F +0.05%P

PTA +10.3PL 2.85SCS +3.7DPR 4.8%DCE

PTA +2.12T +2.21UDC +1.14FLC 78%R 8/2017

Due in October; housed at Seagull-Bay

4 offspring over +2890 GTPI

SIEMERS MOGUL PETY 3010660326 TY

GTPI +2414

BACON-HILL SUPRS MODESTY-ET 3010945893

VG-85 DOM GTPI +2476

2-01 3 305 31181 3.8 1911 3.0 924

MR MOGUL DELTA 1427-ET 72128216

TV TL TY TD

GTPI +2849

EDG RUBY UNO RAE 2054-ET 72437601

EX-91 EEVEE 4-07 DOM GTPI +2601

PTA -152M +92F +20P 84%R 8/2017

PTA +803NM +0.36%F +0.09%P

PTA +9.2PL 2.82SCS +2.3DPR 4.4%DCE

PTA +1.99T +1.84UDC +1.21FLC 84%R 8/2017

3-04 3 308 29500 4.9 1437 3.5 1020

2-01 3 365 25510 5.1 1299 3.6 926

3rd - 9th Dams:

Sandy-Valley Robust Ruby-ET EX-90

2-04 2 305 29450 3.2 950 3.3 971

Sandy-Valley Plane Sapphire VG-87 GMD DOM

2-00 2 365 39130 3.3 1301 3.0 1175

Sandy-Valley Bolt Sheila-ET EX-90

2-02 2 365 44790 3.6 1607 2.9 1294

LIFE 1183 136150 3.6 4922 2.8 3834

Sandy-Valley Forbid Sully VG-87 GMD

2-03 2 365 35110 3.7 1310 3.1 1095

Orthoapple Marshall Alia-ET VG-89 GMD DOM

2-04 2 365 36210 4.4 1605 3.2 1154

Regancrest-JB Tatum-ET VG-87 DOM

2-04 2 365 32682 3.6 1163 3.2 1059

Regancrest Tesk Della EX-90 EX-MS GMD DOM

5-11 2 365 35510 3.5 1234 3.2 1134

Nom. Global Cow of the Year 2006



Sandy-Valley Robust Ruby-ET EX-90

3rd Dam of Lot 10 & 11

LOT 11: TJR JEDI REMEMBER ME-ET

Born 6/29/2017 Reg. 840003142704240 99% #40135

GTPI +2911 (9/2017)

PTA +1612M +89F +59P

PTA +996NM +0.10%F +0.03%P

PTA +10.5PL 2.79SCS +3.5DPR 3.2%DCE 7.0%SCE

PTA +2.60T +2.54UDC +1.24FLC

+193FE +3.9FI +2.6LIV +1020CM

#37 GTPI Heifer in the Breed (9/2017)

Consigned by:

TJR Genetics

563-451-5866 Tim

S-S-I MONTROSS JEDI-ET 3123886035 99% TV

TL TY TD

GTPI +2821

PTA +2624M +76F +88P 80%R 8/2017

PTA +888NM -0.08%F +0.02%P 100%US

PTA +7.5PL 2.94SCS +2.7DPR 4.1%DCE

PTA +2.06T +1.71UDC +1.35FLC 79%R 8/2017

OCD DELTA RAE 34906-ET 3131669070

GTPI +2804

PTA +1223M +85F +49P 78%R 8/2017

PTA +941NM +0.14%F +0.05%P

PTA +10.3PL 2.85SCS +3.7DPR 4.8%DCE

PTA +2.12T +2.21UDC +1.14FLC 78%R 8/2017

Due in October; housed at Seagull-Bay

4 offspring over +2890 GTPI

BACON-HILL MONTROSS-ET 71703339

TV TL TY TD

EX-92 EEVE 4-08 GM GTPI +2773

S-S-I SUPRSIRE MIRI 8679-ET 3011538078

VG-88 EX-MS DOM GTPI +2689

2-00 3 365 39810 3.5 1402 3.1 1234

MR MOGUL DELTA 1427-ET 72128216

TV TL TY TD

GTPI +2849

EDG RUBY UNO RAE 2054-ET 72437601

EX-91 EEVEE 4-07 DOM GTPI +2601

PTA -152M +92F +20P 84%R 8/2017

PTA +803NM +0.36%F +0.09%P

PTA +9.2PL 2.82SCS +2.3DPR 4.4%DCE

PTA +1.99T +1.84UDC +1.21FLC 84%R 8/2017

3-04 3 308 29500 4.9 1437 3.5 1020

2-01 3 365 25510 5.1 1299 3.6 926

3rd - 9th Dams:

Sandy-Valley Robust Ruby-ET EX-90

2-04 2 305 29450 3.2 950 3.3 971

Sandy-Valley Plane Sapphire VG-87 GMD DOM

2-00 2 365 39130 3.3 1301 3.0 1175

Sandy-Valley Bolt Sheila-ET EX-90

2-02 2 365 44790 3.6 1607 2.9 1294

LIFE 1183 136150 3.6 4922 2.8 3834

Sandy-Valley Forbid Sully VG-87 GMD

2-03 2 365 35110 3.7 1310 3.1 1095

Orthoapple Marshall Alia-ET VG-89 GMD DOM

2-04 2 365 36210 4.4 1605 3.2 1154

Regancrest-JB Tatum-ET VG-87 DOM

2-04 2 365 32682 3.6 1163 3.2 1059

Regancrest Tesk Della EX-90 EX-MS GMD DOM

5-11 2 365 35510 3.5 1234 3.2 1134

Nom. Global Cow of the Year 2006



Peak Superb-ET
Dam of Lot 12

LOT 12: TTM ACHIEVER SECRET-ET

Born 7/27/2017 Reg. 840003142041207 99%
 GTPI +2810 (9/2017)
 PTA +1602M +112F +57P
 PTA +939NM +0.19%F +0.04%P
 PTA +7.4PL 2.82SCS +1.6DPR 5.1%DCE 6.2%SCE
 PTA +1.83T +2.35UDC +1.37FLC
 +224FE +2.1FI +0.4LIV +960CM
Early Achiever

Consigned by:
 Tom Mercurio
 301-730-1913

ABS ACHIEVER-ET 3128557482 99% TV TL TY TD

GTPI +2831
 PTA +952M +118F +47P 79%R 8/2017
 PTA +1013NM +0.30%F +0.06%P 100%US
 PTA +8.7PL 2.77SCS +2.4DPR 3.6%DCE
 PTA +1.32T +1.97UDC +1.36FLC 78%R 8/2017

PEAK SUPERB-ET 3129016005 99%-I TV TL TY TD

GTPI +2694
 PTA +1818M +84F +57P 79%R 8/2017
 PTA +858NM +0.06%F +0.01%P
 PTA +8.2PL 2.80SCS +2.0DPR 4.0%DCE
 PTA +1.46T +2.01UDC +0.88FLC 78%R 8/2017
Recently fresh & looks great!

WOODCREST MOGUL YODER-ET 72254526 TV TL TY TD

EX-90 EVEV 4-05 GM GTPI +2710
COMPASS-TRT AMRC AE J925-ET 3013177242 99%
 GP-83 2Y DOM GTPI +2507
 2-07 3 365 30430 4.7 1445 3.3 1003

UECKER SUPERSIRE JOSUPER-ET 70726929 99%-I TY

VG-86-3YR-CAN GTPI +2728
DA-SO-BURN BURBERRY 71792907 TV TL TY TD
 VG-87 VV+VV 2-11 DOM GTPI +2456
 2-03 2 365 28250 4.5 1278 3.5 1002

3rd - 11th Dams:

Da-So-Burn Becka-ET VG-86 DOM
 2-04 2 365 29380 4.9 1428 3.4 1001
 LIFE 1373 107690 4.5 4886 3.6 3892
Da-So-Burn Oman Brandy-ET GP-83 VG-MS DOM
 4-06 2 365 39370 4.8 1907 3.2 1248
 2-04 2 365 34161 5.1 1744 3.4 1151
Da-So-Burn Mtoto Britany EX-90 GMD DOM
 4-06 2 365 44030 4.4 1924 3.0 1336
 2-04 2 365 39340 4.5 1775 3.0 1161
B-V Da-So Rudolph Brooke VG-86 GMD DOM
 4-11 2 365 39780 4.6 1849 3.5 1395
 LIFE 1625 142440 4.5 6442 3.5 5043
Regancrest Aerostar Bea 2E-91 GMD DOM
 8-03 2 365 42570 4.0 1699 3.1 1325
 LIFE 2422 192730 4.0 7800 3.3 6327
Regancrest Mark Chairman Bea 2E-91 GMD DOM
 7-09 2 365 33630 3.8 1278 3.1 1052
 LIFE 2036 140130 4.1 5711 3.3 4616
Regancrest Board Chairman Bea EX-90
 5-09 2 365 26010 4.1 1059 3.4 884
Regancrest Apache Standout Bea VG-86
 LIFE 2432 131940 3.6 4744 3.1 2124
Regancrest Standout Bertrand VG-85
 4-01 2 355 17460 3.3 571



Pine-Tree Sharla Daphne-ET VG-88 EX-MS DOM

Grandam of Lots 13A & 13B

LOT 13: 1ST CHOICE FEMALE

A. SHEAOLA JEDI 6071-ET

B. SHEAOLA JEDI 6066-ET

Born 7/19/2017 Reg. 840003140550078 99%

GTPI +2859 (9/2017)
 PTA +1631M +80F +69P
 PTA +944NM +0.07%F +0.07%P
 PTA +10.2PL 2.75SCS +2.8DPR 4.6%DCE 8.7%SCE
 PTA +2.08T +2.05T +1.82FLC
 +197FE +3.3FI +1.6LIV +985CM

Born 7/15/2017 Reg. 840003140550073 99%

GTPI +2747 (9/2017)
 PTA +1842 +83F +74P
 PTA +896NM +0.06%F +0.06%P
 PTA +8.4PL 2.76SCS +0.5DPR 4.0%DCE 7.8%SCE
 PTA +1.76T +1.76UDC +1.34FLC
 +219FE +1.2FI +0.8LIV +935CM

Time-Tested Cow Family !!

Consigned by:
 Shea Dairy, Inc.
 c/o Dave Houghton
 507-421-1520

S-S-I MONTROSS JEDI-ET 3123886035 99% TV

TL TY TD
 GTPI +2821
 PTA +2624M +76F +88P 80%R 8/2017
 PTA +888NM -0.08%F +0.02%P 100%US
 PTA +7.5PL 2.94SCS +2.7DPR 4.1%DCE
 PTA +2.06T +1.71UDC +1.35FLC 79%R 8/2017

BACON-HILL MONTROSS-ET 71703339

TV TL TY TD
 EX-92 EEVE 4-08 GM GTPI +2773
S-S-I SUPRSIRE MIRI 8679-ET 3011538078
 VG-88 EX-MS DOM GTPI +2689
 2-00 3 365 39810 3.5 1402 3.1 1234

SEAGULL-BAY SSIRE DAPHNE-ET 71618930

VG-86 VE++V 3-00 DOM GTPI +2425
 PTA +1265M +72F +44P 83%R 8/2017
 PTA +629NM +0.09%F +0.02%P
 PTA +5.8PL 2.82SCS -0.2DPR 6.1%DCE
 PTA +1.63T +1.54UDC +1.39FLC 85%R 8/2017
 2-07 3 190 17430 3.7 640 3.1 536

SEAGULL-BAY SUPERSIRE-ET 69981349

TV TL TY TD
 EX-90 EEV 6-06 GM GTPI +2600
PINE-TREE SHARLA DAPHNE-ET 66372249
 VG-88 VE++E 4-02 DOM
 4-01 3 365 35510 4.0 1416 3.2 1147
 2-02 3 365 33900 .42 1414 3.3 1103
3rd Idaho Fat
 LIFE 1199 106440 4.1 4359 3.3 3551

3rd - 5th Dams:

Pine-Tree Mint Sharla-ET NC DOM
Sons in AI
Pine-Tree Outside Mint-ET VG-87 DOM
 4-02 3 365 33710 4.2 1407 3.1 1059
Wesswood-HC Rudy Missy-ET 3E-92 GMD DOM
 4-11 3 365 40880 4.1 1665 3.4 1385
Global Cow of the Year 2014
18 sons & 107 grandsons in AI



Ms Farnear Trudy Thyme-ET VG-85

Paternal Sister to Lot 14

LOT 14: VICTORIA DELTA COCO

Born 4/16/2017 Reg. 12673331C

GTPI +2791 (8/2017)
 PTA +2103M +106F +68P
 PTA +929NM +0.10%F +0.02%P
 PTA +6.3PL 2.88SCS +1.6DPR 5.5%DCE 6.4%SCB
 PTA +1.57T +2.17UDC +1.07FLC
 +251FE +2.0FI +1.4LIV +941CM
Huge CFP from proven sire stack

Consigned by:
 Crackholm
 819-352-1670

MR MOGUL DELTA 1427-ET 72128216

TV TL TY TD
 GTPI +2849
 PTA +1817M +97F +57P 98% 8/2017
 PTA +951NM +0.10%F +0.01%P 100%US
 PTA +8.0PL 2.79SCS +3.7DPR 5.0%DCE
 PTA +1.95T +2.51UDC +1.41FLC

MOUNTFIELD SSI DCY MOGUL-ET 3006972816 TV

TL TY TD
 EX-91 EEVE 5-03 GM GTPI +2494
MISS OCD ROBST DELICIOUS-ET 3006989479
 VG-87 +EV+V 3-05 GMD DOM GTPI +2708
 2-05 2 365 33780 3.3 1121 3.1 1047

3rd - 4th Dams:

Victoria Baxter Cordela VG-88-CAN							
2-08	2	365	30212	4.3	1299	3.1	930
LIFE	4	lac	112256	4.3	4824	3.1	3499
Victoria Glow Cordula VG-85-CAN							
4-09	2	365	37910	3.8	1422	3.4	1303
LIFE	6	lac	163614	3.8	6177	3.4	5525

VICTORIA MONTROSS COCONUT 12063638C

GTPI +2548
 PTA +2111M +87F +63P 78%R 8/2017
 PTA +721NM +0.04%F +0.00%P
 PTA +4.3PL 2.94SCS -0.8DPR 6.9%DCE
 PTA +1.95T +2.25UDC +1.21FLC 77%R 8/2017
 1-11 2 169 7986 4.7 373 3.1 245 Inc

BACON-HILL MONTROSS-ET 71703339

TV TL TY TD
 EX-92 EEVE 4-08 GM GTPI +2773
VICTORIA DAY CORDI 11827765C
 VG-85-3Y-CAN VG-MS
 3-00 2 309 30293 5.3 1607 3.3 1005
 1-11 2 347 28871 4.5 1287 3.4 974



Cookiecutter Ssire Have-ET VG-86 DOM

Dam of Lot 15



Cookiecutter MOM Halo-ET VG-88 EX-MS DOM

Grandam of Lot 15

LOT 15: A-L-H GS JED HAZEL 36713-ET

Born 6/4/2017 Reg. 840003128013560 99%

GTPI +2842 (9/2017)

PTA +1900M +91F +72P

PTA +957NM +0.07%F +0.05%P

PTA +9.0PL 2.92SCS +2.7DPR 5.1%DCE 7.2%SCE

PTA +1.99T +2.14UDC +0.89FLC

+213FE +3.1FI +2.7LIV +985CM

Housed at Trans Ova Genetics, IA

Consigned by:
ALH Genetics USA, Inc.
adolf@alh-genetics.nl
011-31653410490

S-S-I MONTROSS JEDI-ET 3123886035 99% TV

TL TY TD

GTPI +2821

PTA +2624M +76F +88P 80%R 8/2017

PTA +888NM -0.08%F +0.02%P 100%US

PTA +7.5PL 2.94SCS +2.7DPR 4.1%DCE

PTA +2.06T +1.71UDC +1.35FLC 79%R 8/2017

BACON-HILL MONTROSS-ET 71703339

TV TL TY TD

EX-92 EEVE 4-08 GM GTPI +2773

S-S-I SUPRSIRE MIRI 8679-ET 3011538078

VG-88 EX-MS DOM GTPI +2689

2-00 3 365 39810 3.5 1402 3.1 1234

COOKIECUTTER SSIRE HAVE-ET 3012489202 TL

TD

VG-86 VV++E 2-08 DOM GTPI +2531

PTA +878M +86F +46P 81%R 8/2017

PTA +714NM +0.19%F +0.07%P

PTA +5.1PL 2.92SCS +0.8DPR 5.4DCE

PTA +1.80T +1.83UDC +0.67FLC 83%R 8/2017

2-05 2 365 32890 4.9 1640 3.5 1187

SEAGULL-BAY SUPERSIRE-ET 69981349

TV TL TY TD

EX-90 EEV 6-06 GM GTPI +2600

COOKIECUTTER MOM HALO-ET 3007069733

VG-88 VV+VE 2-09 DOM GTPI +2253

2-00 3 365 35280 5.2 1819 3.7 1304

Dam to former #1 sire Halogen

3rd - 9th Dams:

Cookiecutter Gld Holler-ET VG-88 EX-MS DOM

2-03 3 365 40730 3.5 1410 3.1 1249

Ms Kings-Rnsm Champ Haley-ET EX-90 GMD DOM

3-11 3 305 37789 3.7 1404 3.0 1151

Regancrest-JDV Hanna EX-90 EX-MS GMD DOM

4-07 2 365 45110 4.3 1922 3.2 1449

Long-Haven Rudolph Dee 2E-90 GMD DOM

2-11 2 365 32720 4.8 1565 3.8 1252

LIFE 2193 166900 4.3 7099 3.5 5884

Regancrest Elton Disrael VG-88 GMD DOM

2-02 2 365 33617 4.5 1499 3.5 1169

Snow-N Denises Dellia 2E-95 GMD DOM 2*

7-06 2 365 35610 4.0 1431 2.9 1035

LIFE 2558 180240 3.9 7108 3.2 5723

32 EX & 49 VG offspring

Grand Champion, WI Spring Show 1991

Snow-N Dorys Denise 2E-90 GMD DOM

5-09 2 365 33350 3.8 1256 3.1 1038

LIFE 1604 114010 3.6 4153 3.2 3649



Rosylane-LLC Oak 7276-ET VG-85 DOM

Dam of Lot 16

LOT 16: GENOSOURCE ROME 36549-ET

Born 4/3/2017 Reg. 840003128013396 99%-I

GTPI +2823 (8/2017)
 PTA +1352M +68F +48P
 PTA +911NM +0.07%F +0.02%P
 PTA +9.6PL 2.80SCS +3.1DPR 3.0%DCE 7.5%SCE
 PTA +2.78T +3.24UDC +2.19FLC
 +160FE +3.1FI +4.6LIV +944CM

Unique Opportunity from Rosy-Lane breeding

*Consigned by:
 Genosource
 563-451-5866 Tim*

BACON-HILL PETY MODESTY-ET 3013654627 TY

GTPI +2838
 PTA +1800M +91F +61P 79%R 8/2017
 PTA +957NM +0.09%F +0.02%P 100%US
 PTA +7.9PL 3.04SCS +2.6DPR +3.1%DCE
 PTA +2.10T +2.64UDC +2.17FLC 8/2017

ROSYLANE-LLC OAK 7276-ET 72146954 98%-I

VG-85 VV+++ 3-09 DOM GTPI +2502
 PTA +1203M +43F +36P 82%R 8/2017
 PTA +695NM -0.01%F +0.00%P
 PTA +9.6PL 2.74SCS +3.4DPR 3.9%DCE
 PTA +1.85T +1.53UDC +1.43FLC 81%R 8/2017
 2-02 2 305 31830 3.6 1149 3.0 965
 3-01 3 221 24003 3.6 870 2.9 692 Inc

SIEMERS MOGUL PETY 3010660326 TY

GTPI +2414
BACON-HILL SUPRS MODESTY-ET 3010945893
 VG-85 DOM GTPI +2476
 2-01 3 305 31181 3.8 1911 3.0 924

PINE-TREE ALTAOAK-ET 69169951 99%-I TV TL TY TD

GTPI +2369
ROSYLANE-LLC SHAMRCK5489-ET 70273901 98%-I
 GTPI +2318
 PTA +1075M +15F +16P 85%R 8/2017
 PTA +559NM -0.09%F -0.06%P
 PTA +9.2PL 2.92SCS +5.0DPR 4.3%DCE
 PTA +1.47T +1.39UDC +1.26FLC 78%R 8/2017

3rd - 5th Dams:

Rosylane-LLC Super 4712

1-10 3 305 27910 2.8 795 3.0 843

Sons in AI

Rosylane-LLC Jetstream 3461

3-01 3 344 38380 3.6 1393 3.1 1171
 LIFE 130470 3.9 5047 3.1 14047

Rosy-Lane Demo 2852 VG-87 VG-MS

3-10 3 324 39940 4.0 1578 3.1 1227
 LIFE 2139 207190 4.4 9094 3.2 6728



Co-Vista Atwood Desire-ET VG-87
3rd Dam of Lot 17

LOT 17: TERRA-LINDA BNDRS DANICA-ET

Born 6/25/2017 Reg. 840003140985937 TLTD

GTPI +2810 (9/2017)
PTA +1399M +80F +65P
PTA +874NM +0.10%F +0.09%P
PTA +8.3PL 2.88SCS +2.1DPR 5.5%DCE 8.6%SCE
PTA +2.37T +2.79UDC +2.25FLC
+194FE +2.4FI +1.7LIV +915CM

Consigned by:
Mike Santos
559-358-5345

WA-DEL YODER BANDARES-ET 143189741

GTPI +2749
PTA +977M +67F +46P 80%R 8/2017
PTA +847NM +0.11%F +0.06%P 100%US
PTA +9.2PL 2.66SCS +2.8DPR 5.3%DCE
PTA +2.24T +2.85UDC +1.78FLC 78%R 8/2017

ROYLANE-KH MONTROSS DANA-ET 74270111

GTPI +2575
PTA +1305M +50F +54P 77%R 8/2017
PTA +614NM +0.01%F +0.05%P
PTA +5.9PL 2.97SCS +1.7DPR 5.2%DCE
PTA +2.93T +2.67UDC +2.57FLC 77%R 8/2017
Recently fresh with a great mammary system!

WOODCREST MOGUL YODER-ET 72254526 TV TL TYTD

EX-90 EVEV 4-05 GM GTPI +2710
WA-DALE MASSEY BELINDA-ET 142259036
2-05 2 365 29560 4.0 1187 3.5 1038

BACON-HILL MONTROSS-ET 71703339

TV TL TYTD
EX-92 EEVE 4-08 GM GTPI +2773
EDG DESIRE EPIC DIANE-ET 71494875
VG-88 VVVV 3-00 GTPI +2215
PTA +623M +29F +26P 80%R 8/2017
PTA +383NM +0.02%F +0.03%P
PTA +5.4PL 2.90SCS +1.0DPR 6.9%DCE
PTA +2.54T +1.45UDC +2.47FLC 83%R 8/2017

3rd - 9th Dams:

Co-Vista Atwood Desire-ET VG-87
2-03 2 365 26910 3.9 1057 3.6 977
Scientific Deluxe Rae-ETS EX-91 EX-MS
3-11 2 305 29830 3.8 1142 3.4 1008
Scientific Debutante Rae-ET RC EX-92 GMD DOM
2-02 2 365 32930 4.4 1440 3.4 1132
All-American 4-Year-Old 2005
Res. Grand Champion, International Holstein Show 2005
HM All-American Jr 3-Year-Old 2004
Scientific Jubilant Rae-ET RC EX-90 DOM
5-11 3 365 38880 4.1 1608 3.6 1403
C Hanoverhill Tony Rae 3E-96 GMD DOM 5*
LIFE 4 lac 166397 4.1 6903 3.4 5611
HM All-American Jr. 2-Year-Old 1988
Hanoverhill TT Roxette-ET 2E-94 GMD
LIFE 5 lac 164789 4.1 6759 3.1 4367
C Glenridge Citation Roxy 4E-97 GMD DOM
LIFE 3620 209784 4.5 9471
2X Queen of the Breed
More than 300 Excellent descendants



OCD Supersire 9882-ET VG-86 DOM

Dam of Lots 18, 19 & 20

LOT 18: PINE-TREE JEDI 9882 FARIA-ET

Born 5/21/2016 Reg. 143837523 99%RHA-I

GTPI +2789 (8/2017)
 PTA +2559M +91F +79P
 PTA +898NM -0.01%F +0.01%P
 PTA +7.0PL 2.93SCS +2.6DPR 4.2%DCE 7.9%SCE
 PTA +1.91T +1.45UDC +0.41FLC
 +213FE +3.3FI +0.9LIV +905CM
*Donor Dam // Prolific Embryo Producer
 Ready to make embryos for new owner!*

Consigned by:
 Westcoast Holsteins
 604-799-6376

S-S-I MONTROSS JEDI-ET 3123886035 99% TV TL TY TD

GTPI +2821
 PTA +2624M +76F +88P 80%R 8/2017
 PTA +888NM -0.08%F +0.02%P 100%US
 PTA +7.5PL 2.94SCS +2.7DPR 4.1%DCE
 PTA +2.06T +1.71UDC +1.35FLC 79%R 8/2017

OCD SUPERSIRE 9882-ET 3011890130

VG-86 VV++V 2-10 DOM GTPI +2625
 PTA +1363M +85F +53P 82%R 8/2017
 PTA +810NM +0.12%F +0.04%P
 PTA +7.2PL 2.80SCS +3.1DPR 4.4%DCE
 PTA +1.40T +1.01UDC 0.03FLC 83%R 8/2017
 2-01 3 365 31870 4.1 1310 3.4 1083
*11 Sons & Daughters over +2800G
 Sold for \$270,000 in 2016 World Classic
 Averaged 15.5 transferable embryos in 34 IVF cycles*

BACON-HILL MONTROSS-ET 71703339 TV TL TY TD

EX-92 EEVE 4-08 GM GTPI +2773
S-S-I SUPRSIRE MIRI 8679-ET 3011538078
 VG-88 EX-MS DOM GTPI +2689
 2-00 3 365 39810 3.5 1402 3.1 1234

SEAGULL-BAY SUPERSIRE-ET 69981349 TV TL TY TD

EX-90 EEV 6-06 GM GTPI +2600
OCD ROBUST SHIMMER-ET 3008315320
 EX-90 EEVVE 4-09 DOM GTPI +2367
 2-03 3 365 34350 3.5 1200 3.2 1090
 4-08 3 308 33090 3.8 1265 3.2 1052

3rd - 6th Dams:

Ammon-Peachey Shana-ET VG-87 DOM
 5-03 2 365 44802 4.3 1920 3.0 1362
Pine-Tree Martha Sheen-ET VG-86 VG-MS DOM
 1-11 3 365 31210 4.2 1305 3.3 1027
Pine-Tree Missy Martha-ET VG-86 VG-MS DOM
 2-02 3 365 34730 3.6 1266 3.1 1070
Wesswood-HC Rudy Missy-ET 3E-92 GMD DOM
 4-11 3 365 40880 4.1 1665 3.4 1385
*Global Cow of the Year 2014
 18 sons & 107 grandsons in AI*

All
4 heifers
sell!



OCD Supersire 9882-ET VG-86 DOM
Grandam of Lots 19A - 19D

LOT 19A: PINE-TREE 7019 OUTL 7569-ET LOT 19B: PINE-TREE 7019 OUTL 7563-ET

Born 6/18/2017 Reg. 840003139672565 99%
GTPI +2848 (8/2017) PTA +2007M +95F +65P
PTA +968NM +0.07%F +0.02%P
PTA +8.7PL 2.62SCS +2.2DPR 3.9%DCE 8.8%SCE
PTA +1.78T +2.01UDC +1.17FLC
+208FE +2.8FI +2.1LIV +989CM
#2 GTPI & NM Outlast in the Breed (8/2017)

Born 6/9/2017 Reg. 840003139672559 99%
GTPI +2821 (8/2017) PTA +1503M +92F +58P
PTA +944NM +0.13%F +0.05%P
PTA +9.6PL 2.59SCS +2.2DPR 3.9%DCE 8.4%SCE
PTA +1.84T +1.93UDC +1.83FLC
+191FE +2.5FI +2.3LIV +978CM
#4 GTPI Outlast in the Breed (8/2017)

LOT 19C: PINE-TREE 7019 OUTL 7565-ET LOT 19D: PINE-TREE 7019 OUTL 7549-ET

Born 6/9/2017 Reg. 840003139672561 99%
GTPI +2778 (8/2017) PTA +1720M +93F +61P
PTA +911NM +0.10%F +0.04%P
PTA +8.4PL 2.67SCS +1.6DPR 3.5%DCE 7.4%SCE
PTA +1.86T +1.83UDC +1.46FLC
+204FE +2.2FI +0.4LIV +937CM

Born 5/30/2017 Reg. 840003139672545 99%
GTPI +2757 (8/2017) PTA +1384M +79F +56P
PTA +902NM +0.10%F +0.06%P
PTA +9.1PL 2.51SCS +3.0DPR 3.5%DCE 7.6%SCE
PTA +1.52T +1.72UDC +1.15FLC
+172FE +3.2FI +2.0LIV +942CM

PROGENESIS OUTLAST 12302901C 99%-I TD TL TYTY

GTPI +2695
PTA +1496M +81F +52P 76%R 8/2017
PTA +833NM +0.09%F +0.03%P
PTA +7.6PL 2.45SCS +0.4DPR 4.2%DCE
PTA +2.34T +2.32UDC +1.23FLC 75%R 8/2017

PINE-TREE 9882 PROF 7019-ET 3132116871

GTPI +2843
PTA +1575M +79F +63P 75%R 8/2017
PTA +956NM +0.07%F +0.06%P
PTA +10.3PL 2.70SCS +4.2DPR 3.4%DCE
PTA +1.75T +1.82UDC +1.01FLC 74%R 8/2017
#1 GTPI & NM Profit in the Breed (8/2017)
Dam of the #2 GTPI bull in breed (+2897G +1042NM)

LADYS-MANOR DOORSOPEN-ET 99% TV TL TY TD

VG-86-3YR-CAN GTPI +2493

COMPASS-TRT AMERICA OKAY-ET 3014334810

GTPI +2536

S-S-I PARTYROCK PROFIT-ET 3014334961 TV TL TY TD 99%RHA

GTPI +2642

OCD SUPERSIRE 9882-ET 3011890130

VG-86 VV++V 2-10 DOM GTPI +2625
2-01 3 365 31870 4.1 1310 3.4 1083
11 Sons & Daughters over +2800G
Sold for \$270,000 in 2016 World Classic

Consigned by:
Pine-Tree Dairy
330-466-8916

3rd - 5th Dams:

OCD Robust Shimmer-ET EX-90

2-03 3 365 34350 3.5 1200 3.2 1090

Ammon-Peachey Shana-ET VG-87 DOM

5-03 2 365 44802 4.3 1920 3.0 1362

Pine-Tree Martha Sheen-ET VG-86 VG-MS DOM

1-11 3 365 31210 4.2 1305 3.3 1027



Spruce-Haven Mon Mi15981-ET GP-80 2Y

Dam of Lot 20

LOT 20: RICHMOND-FD MM DETAIN-ET

Born 9/16/2016 Reg. 840003137593863

GTPI +2767 (8/2017)

PTA +1063M +82F +55P

PTA +940NM +0.16%F +0.08%P

PTA +9.7PL 2.71SCS +2.2DPR 4.7%DCE 5.9%SCE

PTA +2.09T +2.15UDC +1.53FLC

+196FE +2.2FI +3.3LIV +986CM

#9 NM & #4 CM Detour in the Breed (8/2017)

+160RZG

Donor Dam - Made 25 eggs in 2 Conventional Flushes!

Consigned by:
Richmond Farms Dairy
716-913-5739 Chuck

RONELEE MIDNIGHT DETOUR-ET 731143748 TV

TL TY TD

GTPI +2686

PTA +1305M +73F +50P 79%R 8/2017

PTA +850NM +0.09%F +0.04%P 100%US

PTA +8.3PL 2.77SCS +2.5DPR 5.9%DCE

PTA +1.73T +2.78UDC +0.91FLC 78%R 8/2017

S-S-I EPIC MIDNIGHT-ET 3009554689 TV TL TY TD

EX-90 GTPI +2556

RONELEE FEELING FANCY-ET 142066386

EX-90 GTPI +2478

2-04 3 305 27080 3.8 1018 3.2 854

SPRUCE-HAVEN MON MI15981-ET 72925459

GP-80 GGGG+ 2-03 GTPI +2460

PTA +194M +54F +28P 80%R 8/2017

PTA +652NM +0.17%F +0.08%P

PTA +7.2PL 2.78SCS +1.6DPR 3.7%DCE

PTA +2.18T +1.79UDC +1.96FLC 81%R 8/2017

2-00 3 291 22183 4.5 989 3.3 736 Inc

Will calve back in 11 months

VIEW-HOME MONTEREY-ET 69087180 99%-I TV

TL TY TD

GTPI +2561

VISION-GEN MOGUL MI14387-ET 71631600

VG-85 VV++V 3-05 GTPI +2342

2-00 2 305 19980 3.7 741 3.4 680

3rd - 9th Dams:

Vision-Gen Planet Misty VG-85 VG-MS DOM

4-01 2 305 32220 3.2 1020 3.1 992

Vision-Gen Goldwyn Missy-ET VG-87 VG-MS

2-02 3 365 29280 4.0 1174 3.4 988

Pine-Tree Missy Melinda-ET VG-85 VG-MS GMD DOM

2-00 2 365 29260 4.5 1322 3.4 996

Wesswood-HC Rudy Missy-ET 3E-92 GMD DOM

4-11 3 365 40880 4.1 1665 3.4 1385

Global Cow of the Year 2014

18 sons & 107 grandsons in AI

Wesswood Elton Mimi EX-90 EX-MS GMD DOM

3-05 2 365 35380 3.3 1160 3.0 1054

Wesswood Mandingo Ivy VG-87 VG-MS

6-05 2 365 36330 3.6 1305 2.8 1018

LIFE 1835 144060 3.4 4933 2.9 4139

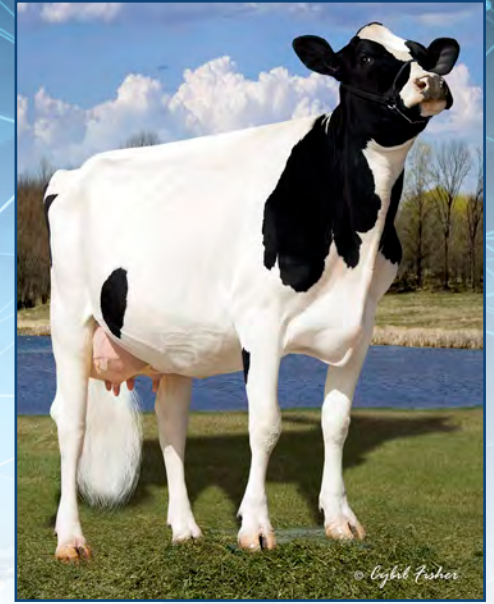
Wesswood Astro Matt Ester

VG-87 VG-MS GMD DOM

LIFE 1847 140,110 3.6 5029 3.0 4158



Ammon-Peachey Shauna-ET EX-91 GMD DOM
3rd Dam of Lot 21



Seagull-Bay Miss America VG-87 GMD DOM
Grandam of Lot 21

LOT 21: AUGUSTINIAN DELTA DAWN-ET

Born 4/26/2016 Reg. 840003130799957 99% #21179

GTPI +2781 (8/2017)
PTA +2008M +89F +69P
PTA +882NM +.05%F +0.02%P
PTA +6.6PL 2.74SCS +0.7DPR 6.4%DCE 8.2%SCE
PTA +2.25T +2.60UDC +1.37FLC
+220FE +1.4FI +1.5LIV +904CM

Donor Dam
Prolific Embryo Producer

Consigned by:
ALH Genetics USA, Inc.
adolfo@alh-genetics.nl
011-31653410490

LOT 21A:
5 #1 Female IVF Embryos
S: Big Bubba 507H012940
PA +2828G
+900NM +1953M +80F +72P +2.19T

MR MOGUL DELTA 1427-ET 72128216
TV TL TY TD

GTPI +2849
PTA +1817M +97F +57P 98%R 8/2017
PTA +0.10%F +0.01%P 100%US
PTA +8.0PL 2.79SCS +3.7DPR 5.0%DCE
PTA +1.95T +2.51UDC +1.41FLC 95%R 8/2017

COMPASS-TRT AMERICA ORCA-ET 3014259000
99%-I TL TD

VG-87 VVVV 3-03 GTPI +2425
PTA +1674M +68F +58P 81%R 8/2017
PTA +599NM +0.02%F +0.02%P
PTA +3.2PL 2.90SCS -0.9DPR 4.7%DCE
PTA +2.26T +1.88UDC +0.71FLC 82%R 8/2017
2-01 3 297 289820 3.6 1077 3.2 968

MOUNTFIELD SSI DCY MOGUL-ET 3006972816 TR
TV TL TY TD

EX-91 EEVE 5-03 GM GTPI +2504
MISS OCD ROBST DELICIOUS-ET 3006989479
VG-87 +EV+V 3-05 DOM
2-05 2 305 25780 3.5 908 3.1 793

PINE-TREE ALTAOAK-ET 69169951 99%-I TV TL TY TD

GTPI +2369
SEAGULL-BAY MISS AMERICA-ET 70640281
VG-87 VVVV 3-04 GMD DOM GTPI +2404
2-03 2 365 31750 4.3 1368 3.5 1120
Full sister to Supersire

3rd - 6th Dams:

Ammon-Peachey Shauna-ET EX-91 GMD DOM
6-03 3 365 40290 3.7 1479 3.2 1309
Popular AI sons include Supersire, Headliner, Platinum, Secretariat & more
Pine-Tree Martha Sheen-ET VG-86 VG-MS DOM
1-11 3 365 31210 4.2 1305 3.1 968
Pine-Tree Missy Martha-ET VG-86 VG-MS DOM
2-02 3 365 34730 3.6 1266 3.1 1070
Wesswood-HC Rudy Missy-ET 3E-92 GMD DOM
4-11 3 365 40880 4.1 1665 3.4 1385
Global Cow of the Year 2014
18 sons & 107 grandsons in AI



Rickland Montross 5321-ET VG-87 2Y

Dam of Lot 22

LOT 22: RICKLAND MODESTY 6210-ET

Born 4/17/2016 Reg. 840003134640441 99%

GTPI +2787 (8/2017)
 PTA +2187M +77F +63P
 PTA +886NM -0.02%F -0.01%P
 PTA +7.8PL 2.93SCS +2.8DPR 3.6%DCE 5.9%SCE
 PTA +2.52T +2.50UDC +1.93FLC
 +187FE +2.7FI +1.5LIV +884CM

Donor Dam

Sells ready to work for new owner!

Averged 6 embryos / flush with 70% conception!

Consigned by:
 Jeff Jauquet
 920-619-6007

BACON-HILL PETY MODESTY-ET 3013654627 TY

GTPI +2838
 PTA +1800M +91F +61P 79%R 8/2017
 PTA +957NM +0.09%F +0.02%P 100%US
 PTA +7.9PL 3.04SCS +2.6DPR +3.1%DCE
 PTA +2.10T +2.64UDC +2.17FLC 8/2017

SIEMERS MOGUL PETY 3010660326 TY

GTPI +2414
BACON-HILL SUPRS MODESTY-ET 3010945893
 VG-85 DOM GTPI +2476
 2-01 3 305 31181 3.8 1911 3.0 924

RICKLAND MONTROSS 5321-ET 3015030892 99%-I

VG-87 VV+VV 2-06 GTPI +2606
 PTA +2442M +68F +66P 78%R 8/2017
 PTA +722NM -0.08%F -0.03%P
 PTA +5.6PL 2.92SCS +0.2DPR 5.2%DCE
 PTA +2.78T +2.33UDC +1.98FLC 82%R 8/2017

BACON-HILL MONTROSS-ET 71703339 TV TL TY TD

EX-92 EEV+V 4-11 GM GTPI +2773
RICKLAND MCCUTCHEN 4415-ET 70992611 99%-I
 VG-87 EE+V 4-11 DOM GTPI +2294
 PTA +1294M +32F +40P 81%R 8/2017
 PTA +469NM -0.06%F +0.00%P
 PTA +5.1PL 2.93SCS +0.1DPR 5.9%DCE
 PTA +2.60T +1.76UDC +2.19FLC 84%R 8/2017
 2-01 3 305 29590 3.7 1089 3.3 973

3rd - 11th Dams:

Tramilda-N Super Bella-ET 2E-92 DOM
 3-11 3 305 41190 3.6 1497 3.2 1298
 LIFE 940 107500 3.6 3862 3.2 3408
Hendel Gldwyn Billy 2771-ET NC
Glen-D-Haven Oman Biffy-ET VG-86 DOM
 2-07 2 365 34320 3.4 1165 3.8 1298
Glen-D-Haven Aaron Bambi-ET VG-88 GMD DOM
 5-06 2 365 33870 3.2 1092 3.2 1095
Glen-D-Haven Elton Billy-ET VG-88 GMD DOM
 3-08 2 365 36590 4.4 1593 3.5 1298
 LIFE 1654 130550 4.2 5498 3.6 4706
Glen-D-Haven Thor Jamie EX-90 EX-MS GMD DOM
 6-01 2 365 36310 3.8 1366 3.3 1211
 LIFE 1826 149400 3.8 5748 3.4 5028
O-Bee Rex Julie-ET VG-87 DOM
 3-06 2 365 35810 4.0 1430 3.4 1209
O-Bee Valiant Polly-ET VG-85 DOM
 8-08 2 343 25470 3.6 922 3.3 838
 LIFE 2288 167990 3.6 6064 3.2 4671
Clydell Ivanhoe Peggy 2E-91
 6-02 2 328 26790 4.1 1106
 LIFE 2817 183240 4.1 7565



Larcrest Canto-ET VG-88 DOM

Grandam of Lot 23

LOT 23: MS MODESTY CANTO 410-ET

Born 10/12/2016 Reg. 840003139851604 99%RHA-I

GTPI +2793 (8/2017)

PTA +439M +93F +39P

PTA +906NM +0.28%F +0.09%P

PTA +7.9PL 2.81SCS +3.0DPR 3.5%DCE 6.9%SCE

PTA +2.42T +2.60UDC +1.69FLC

+198FE +3.4FI +2.6LIV +954CM

Housed at Trans Ova Genetics

Has never been worked!

Consigned by:
IHG & Maverick Global
c/o Declan Patten
+61499 949 292

BACON-HILL PETY MODESTY-ET 3013654627 TY

GTPI +2838

PTA +1800M +91F +61P 79%R 8/2017

PTA +957NM +0.09%F +0.02%P 100%US

PTA +7.9PL 3.04SCS +2.6DPR +3.1%DCE

PTA +2.10T +2.64UDC +2.17FLC 8/2017

SIEMERS MOGUL PETY 3010660326 TY

GTPI +2414

BACON-HILL SUPRS MODESTY-ET 3010945893

VG-85 DOM GTPI +2476

2-01 3 305 31181 3.8 1911 3.0 924

MS POWER CANTO 9473-ET 3125944995

99%RHA-I

GTPI +2604

PTA +577M +72F +49P 79%R 8/2017

PTA +708NM +0.18%F +0.11%P

PTA +5.4PL 2.91SCS +2.5DPR 5.1%DCE

PTA +2.71T +1.65UDC +1.38FLC 77%R 8/2017

VIEW-HOME POWERBALL-P-ET 3011789393 PO

TV TL TY TD

GTPI +2361

LARCREST CANTO-ET 58591952 99%RHA-I TL TD

VG-88 EEEV 3-06 DOM GTPI +2403

GTPI +1205M +68F +46P 82%R 8/2017

PTA +621NM +0.08%F +0.03%P

PTA +5.1PL 2.75SCS -0.8DPR 5.7%DCE

PTA +2.21T +1.31UDC +0.55FLC 84%R 8/2017

3-00 3 357 38840 3.9 1534 3.3 1287

3rd - 6th Dams:

Larcrest Cale-ET VG-89 EX-MS DOM

2-02 2 365 41710 5.3 2204 3.8 1566

1st MN Fat

Larcrest Crimson-ET 3E-94 GMD DOM

5-02 2 365 46390 5.3 2448 3.5 1620

LIFE 2233 195860 4.7 9125 3.8 7396

Contracted for bulls & embryos worldwide

Larcrest Cosmopolitan VG-87 GMD DOM

2-04 2 365 30930 4.1 1261 3.6 1119

Bulls & Embryos sold Worldwide

Larcrest Oside Champagne-TW EX-90 GMD DOM

2-03 2 365 29110 4.5 1322 3.7 1077

The most popular contract cow ever at Larcrest

17 Sons in A.I. Worldwide



Ms Brody Jospr 32051-ET

Sells as Lot 24

LOT 24: MS BRODY JOSPR 32051-ET

Born 8/9/2015 Reg. 840003126776056 99%

GTPI +2757 (8/2017)

PTA +1484M +95F +55P

PTA +874NM +0.15%F +0.04%P

PTA +7.3PL 2.72SCS +1.5DPR 5.0%DCE 7.2%SCE

PTA +2.31T +2.02UDC +0.87FLC

+194FE +2.0FI +1.8LIV +901CM

Fresh 8/12/2017

Ready to work // Averaged 19 oocytes on 3 aspirations

Consigned by:

Genosource

563-451-5866 Tim

UECKER SUPERSIRE JOSUPER-ET 70726929

99%-1TY

VG-86-3YR-CAN GTPI +2728

PTA +3129M +104F +91P 98%R 8/2017

PTA +908NM -0.05% -0.02%P 94%US

PTA +5.9PL 2.92SCS +0.7DPR 4.4%DCE

PTA +1.21T +0.83UDC -0.02FLC 94%R 8/2017

SEAGULL-BAY SUPERSIRE-ET 69981349

TV TL TY TD

EX-90 EEV 6-06 GM GTPI +2600

UECKER BEACON JOYFULLY-ET 68817934

VG-86

4-04 2 365 36030 3.7 1340 3.2 1143

MS BENSCHAE UNO BRODY 72437603

GTPI +2300

PTA -52M +31F +10P 82%R 8/2017

PTA +467NM +0.12%F +0.04%P

PTA +6.3PL 2.56SCS +1.5DPR 5.3%DCE

PTA +2.49T +2.46UDC +1.87FLC 79%R 8/2017

AMIGHETI NUMERO UNO-ET

7990915143ITA TV TL TY TD

GM GTPI +2363

FARNEAR-TBR-BH BENSCHAE-ET 69320702

EX-90 VVVE 5-06 GTPI +1865

PTA +2.25T +2.16UDC +1.79FLC 83%R 8/2017

4-02 2 305 20570 3.9 793 3.3 686

5-03 2 247 17710 3.5 628 3.1 550

#1 PTAT Heifer of the Breed (8/11)

3rd - 11th Dams:

Twin-Spruce Gold Bailey-ET VG-87

2-01 2 365 29640 3.9 1159 3.8 1116

Regancrest TS Benschae-ET VG-88-CAN

2-05 2 365 30743 4.6 1402 3.5 1080

Sold for \$196,000 in 2009 International Intrigue

Regancrest-PR Barbie-ET EX-92 GMD DOM

2-06 2 365 31690 3.9 1237 3.3 1050

HM All-American Junior 3-Year-Old 2004

Regancrest Juror Brina-ET EX-92 GMD

4-04 2 365 40640 3.6 1478 3.0 1217

Regancrest Aerostar Bert-ET EX-90 GMD DOM

5-02 2 365 37790 3.6 1357 3.2 1215

Regancrest Mark Chairman Bea 2E-91 GMD DOM

7-09 2 365 33630 3.8 1278 3.1 1052

LIFE 2036 140130 4.1 5711 3.3 4616

Regancrest Board Chairman Bea EX-90

5-09 2 365 26010 4.1 1059 3.4 884

Regancrest Apache Standout Bea VG-86

LIFE 2432 131940 3.6 4744 3.1 2124

Regancrest Standout Bertrand VG-85

4-01 2 355 17460 3.3 571



Mis Aderyn Asteroid 2002-ET VG-86

Grandam of Lot 25



KHW Super Aderyn-ET RC EX-90 DOM

3rd Dam of Lot 25

LOT 25: KCCK ANGIES AMAZON-ET *RC

Born 5/12/2017 Reg. 840003141240912 RC

GTPI +2786 (8/2017)
 PTA +1675M +96F +63P
 PTA +930NM +0.12%F +0.05%P
 PTA +8.1PL 2.75SCS +1.3DPR 4.8%DCE 6.4%SCE
 PTA +2.05T +2.08UDC +1.75FLC
 +220FE +1.3FI +1.6LIV +970CM
One of the highest RC heifer in the breed

Consigned by:
 KCCK
 563-920-6084

MR SALVATORE RC-ET 3129037884 TV TL TY TD

GTPI +2602
 PTA +2107M +65F +55P 78%R 8/2017
 PTA +771NM -0.05%F -0.03%P 100%US
 PTA +7.2I; 2.68SCS +1.4DPR 4.3%DCE
 PTA +2.02T +1.62UDC +1.86FLC 77%R 8/2017

KCCK DELTA ANGIE-ET 3132621210 RC TL TD

GTPI +2714
 PTA +1290M +112F +60P 78%R 8/2017
 PTA +923NM +0.23%F +0.08%P
 PTA +7.2PL 2.79SCS +0.3DPR 5.4%DCE
 PTA +1.55T +1.70UDC +0.82FLC 77%R 8/2017
Due in April
*One of the Highest *RC Delta's in the World!*

COGENT SUPERSHOT-ET 755898903NLD TV TL TY TD

GTPI +2473
SNOWBIZ SYMPATICO SOFIA-RED-ET 108502624C
 VG-85 VV++V 2YR
 2-04 2 305 25750 4.0 1028 3.2 812
Former #1 Red Cow of the Breed (4/2016)

MR MOGUL DELTA 1427-ET 72128216

TV TL TY TD
 GTPI +2849
MISS ADERYN ASTEROID 2002-ET 72437549 RC TY
 VG-86 VVVV 3-02 GTPI +2421
 2-05 2 365 28340 4.3 1230 3.5 997
Former #1 GTPI Red Carrier Cow in the USA
*Dam of Ambassador *RC & Adidas-Red @ ST*
*Dam to several high ranking *RC daughters*
*Sister to Perfect Aiko *RC, Fraiko *RC, Applejax *RC*
Fresh again & potential EX cow!

3rd - 10th Dams:

KHW Super Aderyn-ET RC EX-90 EX-MS DOM
 4-05 2 365 31900 4.5 1430 3.8 1202
Former #1 GTPI RC/Red Cow
Sold for \$100,000 in 2011 Legends of the Fall Sale
KHW Goldwyn Aiko-ET EX-91 EX-MS DOM
 5-07 2 365 29150 5.1 1500 4.0 1159
Maternal sister to:
 KHW Regiment Apple-Red-ET (3E-96 DOM)
Kamps-Hollow Altitude-ET RC 2E-95 DOM
 7-00 2 365 39690 4.7 1849 3.5 1385
 LIFE 1844 144460 4.4 6295 3.7 5288
All-American R&W Produce of Dam 2014
Red Impact Cow of the Year 2009
Clover-Mist Alisha-ET RC 3E-93 DOM
 5-03 3 365 34670 4.8 1654 3.5 1220
 LIFE 2999 226470 4.7 10659 3.6 8149
Clover-Mist Augy Star-ET 4E-94 DOM
 7-10 2 365 43140 5.0 2136 3.1 1339
 LIFE 2274 196240 4.8 9349 3.3 6458
D-R-A August 4E-96 DOM
 8-05 3 365 27460 4.3 1187 3.2 871
 LIFE 3433 190200 4.4 8281 3.5 4818
D-R-A Ideal Precious Leader 2E-90 EX-MS
 7-06 2 358 20090 3.9 787 3.2 637
 LIFE 2456 133250 4.0 5308
D-R-A Princess Lad Leader 3E-90
 9-05 2 305 19160 4.2 809



Pine-Tree Ramos Alexia-ET 2E-91

4th Dam of Lot 26

LOT 26: PINE-TREE 6809 FLAG 7463-ET

Born 3/13/2017 Reg. 840003139672459 99%-I TL TD

GTPI +2785 (8/2017)
 PTA +1406M +88F +60P
 PTA +902NM +0.13%F +0.07%P
 PTA +8.4PL 2.74SCS +2.1DPR 5.3%DCE 7.8%SCE
 PTA +2.36T +1.92UDC +1.59FLC
 +193FE +2.6FI +1.7LIV +940CM
Different Sire Stack // No Modesty, Jedi or Frazzled!

Consigned by:
 Pine-Tree Dairy
 330-466-8916

S-S-I 1STCLASS FLAGSHIP-ET 3127943686 99%-I TV TL TY TD

GTPI +2666
 PTA +833M +66F +40P 80%R 8/2017
 PTA +799NM +0.13%F +0.06%P 100%IS
 PTA +9.0PL 2.69SCS +2.3DPR 4.9%DCE
 PTA +2.41T +2.32UDC +2.01FLC 79%R 8/2017

PINE-TREE 5959 DRACO 6809 99% 3132116661 TL TD

GTPI +2649
 PTA +1873M +68F +55P +76%R 8/2017
 PTA +775NM +0.00%F +0.00%P
 PTA +7.5PL 2.69SCS +2.3DPR 5.7%DCE
 PTA +2.20T +2.20UDC +0.65FLC 7%R 8/2017
Due in early December

ZAHBULLS ALTA1STCLASS-ET 71441918 TV TL TY TD

GTPI +2317
S-S-I SUPRSIRE MIRI 8679-ET 3011538078
 VG-88 EX-MS DOM GTPI +2689
 2-00 3 365 39810 3.5 1402 3.1 1234

MR COIN DRACO 15006-ET 3012574853 TV TL TY TD

GTPI +2654
PINE-TREE 5133 SHAW 5959 99% 71859537 TL TD
 VG-85 VVVV+ 3-07 GTPI +2316
 2-11 3 332 36004 4.5 1610 3.2 1137 Inc
 1-09 3 365 31590 4.0 1253 3.2 1026

3rd - 12th Dams:
Pine-Tree 4075 Dobe 5133-ET NC
Pine-Tree Ramos Alexia-ET 2E-91 EX-MS
 4-02 3 324 29200 4.5 1317 3.5 1024
 LIFE 1698 134120 4.5 6050 3.5 4713
Milking in her 6th lactation, pregnant & due in April with her 7th calf!!
Mtn-View-S Boliv Alexia-ET EX-91
 1-11 3 365 31861 3.7 1171 3.1 992
Jafral Zack Abby-ET VG-88 GMD DOM
 2-04 2 365 38111 4.2 1596 3.5 1340
Jafral Prelude Prissy VG-86 GMD DOM
 1-11 2 365 36629 3.7 1365 3.7 1356
Jafral Wister Raven-ET VG-88 GMD DOM
 3-09 2 365 40663 4.1 1682 3.6 1452
Briarpatch-R Raven-ET VG-87 GMD DOM
 5-00 2 365 40860 3.9 1609 3.6 1470
Rilara Mars Las Ravena EX-91 GMD DOM
 4-03 2 305 29030 4.6 1329
Rilara Haven Charming Las-Twin VG-87 GMD DOM
 6-10 2 365 30490 3.4 1029 3.1 935
 LIFE 164400 3.4 5651 3.1 2187
Rag Apple Locust-Grove Charm VG-86 GMD DOM
 5-02 2 305 26321 3.6 948



Ms Moviestar Shaker-ET VG-85 VG-MS DOM
3rd Dam of Lot 27



Brookview-E Moviestar-ET VG-86 GMD
4th Dam of Lot 27

LOT 27: BOZLAND MODESTY 37125-ET

Born 5/12/2017 Reg. 840003128013972 99%

GTPI +2770 (8/2017)

PTA +1293M +90F +51P

PTA +961NM +0.16%F +0.04%P

PTA +8.4PL 2.84SCS +3.0DPR 3.7%DCE 4.7%SCE

PTA +1.34T +1.79UDC +1.95FLC

+212FE +3.1FI +4.7LIV +1002CM

One of the Lowest SCE in the Breed!

Consigned by:
North Side Genetics
c/o Dr. Mike Bossom, DVM
563-357-2951

BACON-HILL PETY MODESTY-ET 3013654627 TY

GTPI +2838

PTA +1800M +91F +61P 79%R 8/2017

PTA +957NM +0.09%F +0.02%P 100%US

PTA +7.9PL 3.04SCS +2.6DPR +3.1%DCE

PTA +2.10T +2.64UDC +2.17FLC 8/2017

SIEMERS MOGUL PETY 3010660326 TY

GTPI +2414

BACON-HILL SUPRS MODESTY-ET 3010945893

VG-85 DOM GTPI +2476

2-01 3 305 31181 3.8 1911 3.0 924

SAN-DAN SKRDAY TROY 1423-ET 3131847398 99%

GTPI +2552

PTA +971M +59F +41P 78%R 8/2017

PTA +813NM +0.09%F +0.04%P

PTA +9.4PL 2.70SCS +4.0DPR 4.3%DCE

PTA +0.54T +0.86UDC +0.85FLC 77%R 8/2017

Recently fresh with a great mammary system!

RIVER-BRIDGE CO-OP TROY-ET 71753166 99% TV TL TY TD

GTPI +2371

EDG SHAKER DAY 53335-ET 3013473821

VG-85 +V++V 3-03 GTPI +2396

2-11 3 300 3960 3.6 1453 3.2 1295

1-09 3 305 25240 3.6 911 3.2 802

3rd - 7th Dams:

Ms Moviestar Shaker-ET VG-85 VG-MS DOM

2-04 3 305 26640 3.2 843 3.3 868

Brookview-E Moviestar-ET VG-86 GMD

2-07 2 365 31200 4.6 1440 3.4 1069

Dam of Mardi Gras & Model

Carters-Corner Shot Melody EX-90 DOM

2-03 2 365 32615 4.6 1496 3.4 1107

Pine-Tree Missy Melinda-ET VG-85 VG-MS DOM

2-00 3 365 29260 4.5 1322 3.4 996

Wesswood-HC Rudy Missy-ET 3E-92 GMD DOM

4-11 3 365 40880 4.1 1665 3.4 1385

Global Cow of the Year 2014

18 sons & 107 grandsons in AI



Ms Lookout Pesc Bkm Bria-ET VG-86 DOM

3rd Dam of Lots 28 & 29

LOT 28: T-SPRUCE 111970 LOT 29: T-SPRUCE 11109

Born 7/22/2017 Reg. 840003145066627 99%

GTPI +2796 (9/2017 Prelim)
 PTA +1661M +100F +69P
 PTA +886NM +0.14%F +0.07%P
 PTA +6.7PL 2.79SCS +1.50DPR 4.8%DCE 8.2%SCE
 PTA +2.40T +1.92UDC +1.03FLC
 +221FE +2.2FI

Early Samuri
Unique Sire Stack!

Born 6/28/2017 Reg. 840003145066539 99%

GTPI +2695 (9/2017 Prelim)
 PTA +2560M +90F +81P
 PTA +792NM -0.02%F +0.02%P
 PTA +4.1PL 2.87SCS +0.0DPR 5.2%DCE 8.9%SCE
 PTA +2.50T +1.70UDC +0.90FLC
 +217FE +0.5FI

Big-Time Milk & CFP!!

Consigned by:
 Twin Spruce
 320-493-9703

SIRE OF LOT 28:

OCD SPRING SAMURI-ET 3133106322 99% TV TL TYTD

GTPI +2765
 PTA +1355M +93F +62P 78%R 8/2017
 PTA +883NM +0.15%F +0.018%P 100%US
 PTA +7.2PL 2.85SCS +2.9DPR 4.9%DCE
 PTA +1.74T +1.75UDC +0.92FLC 77%R 8/2017

PROGENESIS CAPITAL GAIN BONNI 12302885C 99%

GTPI +2548
 PTA +2461M +78F +68P 77%R 8/2017
 PTA +690NM -0.05%F -0.01%P
 PTA +3.9PL 2.89SCS -0.4DPR 4.2%DCE
 PTA +2.58T +1.63UDC +0.38FLC 76%R 8/2017
#4 GTPI Capital Gain in the Breed
Due Spring 2018

SIRE OF LOT 29:

WA-DEL ABS BOURBON-ET 3014558977 TV TL TY TD

GTPI +2752
 PTA +2309M +73F +73P 80%R 8/2017
 PTA +800NM -0.04%F +0.01%P 100%US
 PTA +5.7PL 2.77SCS +2.8DPR 4.6%DCE
 PTA +2.14T +2.08UDC +1.35FLC 79%R 8/2017

STANTONS CAPITAL GAIN 11696699 TL TY TV

GTPI +2391
PES009 SUPERSIRE BREANNE 108535184C
 GTPI +2446
 PTA +2157M +72F +67P 83%R 8/2017
 PTA +679NM -0.04%F +0.01%P
 PTA +4.5PL 2.86SCS -1.6DPR
 PTA +1.76T +0.98UDC +0.23FLC 8/2017
 2-05 2 365 34271 4.3 1479 3.6 1217

3rd - 8th Dams:

Ms Lookout Pesc Bkm Bria-ET VG-86 DOM 2*
 2-00 2 314 21660 4.2 915 3.5 765
Ralma-RH Manoman Banjo-ET 2E-92-CAN 1*
 4-03 2 365 38267 4.0 1545 3.6 1380
 LIFE 4 lacs 145027 4.0 5816 3.6 5249
Ralma Goldwyn Clarinet EX-91
 2-01 2 365 37780 4.4 1664 3.2 1205
Ralma Christmas Fudge VG-88 GMD DOM
 2-03 2 365 31810 4.1 1292 3.2 1027
Global Cow of the Year 2011
Ralma Juror Faith EX-91 GMD DOM
 4-02 2 365 27860 4.5 2165 3.1 1497
One of the best brood cows in the breed!
Ralma Leadman Fashion VG-89
 4-10 2 365 40711 3.7 1495 3.0 1232



Ammon-Peachey Shana-ET VG-87 DOM

3rd Dam of Lots 30 & 31

Both Herzes

LOT 30: MS 9882 FRAZZLED 4316-ET LOT 31: MS 9882 FRAZZLED 4310-ET

Born 7/23/2017 Reg. 840003146056107 99%

GTPI +2825 (8/2017)
 PTA +1737M +105F +66P
 PTA +977NM +0.15%F +0.05%P
 PTA +8.8PL 2.66SCS +2.7DPR 5.0%DCE 7.7%SCE
 PTA +1.47T +1.27UDC +0.44FLC
 +218FE +3.3FI +1.9LIV +1010CM

Born 7/21/2017 Reg. 840003146056101 99%

GTPI +2787 (8/2017)
 PTA +1606M +89F +56P
 PTA +953NM +0.11%F +0.03%P
 PTA +9.9PL 2.72SCS +3.6DPR 3.8%DCE 7.3%SCE
 PTA +1.36T +1.68UDC +0.70FLC
 +189FE +4.0FI +2.3LIV +976CM

Consigned by:
 9882 Partners
 John Anderson - 208-221-0904

MELARRY JOSUPER FRAZZLED-ET 74261651 TV TL TY TD 99%RHA

GTPI +2788
 PTA +2502M +100F +76P 79%R 8/2017
 PTA +964NM +0.03%F +0.00%P 100%US
 PTA +8.0PL 2.67SCS +1.0DPR 5.7%DCE
 PTA +1.18T +1.44UDC +0.87FLC 78%R 8/2017

OCD SUPERSIRE 9882-ET 3011890130

VG-86 VV++V 2-10 DOM GTPI +2625
 PTA +1363M +85F +53P 82%R 8/2017
 PTA +810NM +0.12%F +0.04%P
 PTA +7.2PL 2.80SCS +3.1DPR 4.4%DCE
 PTA +1.40T +1.01UDC 0.03FLC 83%R 8/2017
 2-01 3 365 31870 4.1 1310 3.4 1083
11 Sons & Daughters over +2800G
Sold for \$270,000 in 2016 World Classic
Averaged 15.5 transferable embryos in 34 IVF cycles

UECKER SUPERSIRE JOSUPER-ET 70726929 99%-I TY

VG-86-3YR-CAN GTPI +2728
MELARRY SHOTGLASS FRAZZLE 72292872
 VG-85 GTPI +2414
 2-00 2 365 33740 4.1 1388 3.3 1099

SEAGULL-BAY SUPERSIRE-ET 69981349

TV TL TY TD
 EX-90 EEVVE 6-06 GM GTPI +2600
OCD ROBUST SHIMMER-ET 3008315320
 EX-90 EEVVE 4-09 DOM GTPI +2367
 2-03 3 365 34350 3.5 1200 3.2 1090
 4-08 3 308 33090 3.8 1265 3.2 1052

3rd - 6th Dams:

Ammon-Peachey Shana-ET VG-87 DOM
 5-03 2 365 44802 4.3 1920 3.0 1362
Pine-Tree Martha Sheen-ET VG-86 VG-MS DOM
 1-11 3 365 31210 4.2 1305 3.3 1027
Pine-Tree Missy Martha-ET VG-86 VG-MS DOM
 2-02 3 365 34730 3.6 1266 3.1 1070
Wesswood-HC Rudy Missy-ET 3E-92 GMD DOM
 4-11 3 365 40880 4.1 1665 3.4 1385
Global Cow of the Year 2014
18 sons & 107 grandsons in AI



LOT 32: NO-FLA GS M NAOMI 31026-ET

Born 2/28/2017 Reg. 840003139798423 99%RHA

GTPI +2805 (8/2017)

PTA +1282M +108F +53P

PTA +976NM +0.22%F +.05%P

PTA +8.6PL 2.97SCS +1.8DPR 3.8%DCE 6.3%SCE

PTA +1.57T +2.41UDC +1.77FLC

+234FE +2.0FI +2.8LIV +1019CM

Sells Ready to IVF

Huge Feed Efficiency, Negative Stature and Low Calving Ease!

Consigned by:
Genosource
563-451-5866 Tim

BACON-HILL PETY MODESTY-ET 3013654627 TY

GTPI +2838

PTA +1800M +91F +61P 79%R 8/2017

PTA +957NM +0.09%F +0.02%P 100%US

PTA +7.9PL 3.04SCS +2.6DPR +3.1%DCE

PTA +2.10T +2.64UDC +2.17FLC 8/2017

SIEMERS MOGUL PETY 3010660326 TY

GTPI +2414

BACON-HILL SUPRS MODESTY-ET 3010945893

VG-85 DOM GTPI +2476

2-01 3 305 31181 3.8 1911 3.0 924

3rd - 6th Dams:

No-Fla Freddie 27523-ET VG-87

4-10 3 305 34670 4.3 1483 3.2 1115

No-Fla Outside 22405-ET VG-85

3-11 3 305 22590 4.0 897 3.3 748

No-Fla Leader C Garland EX-90 EX-MS

4-01 3 305 30670 3.5 1085 2.9 879

No-Fla Designer Glenda VG-88

NO-FLA SUPERSIRE 39188-ET 3125078796

99%RHA

GTPI +2465

PTA +882M +87F +37P 80%R 8/2017

PTA +728NM +0.19%F +0.04%P

PTA 7.0PL 2.84SCS +0.98DPR 4.8%DCE

PTA +0.68T +1.04UDC +1.00FLC 77%R 8/2017

1-09 3 219 15660 4.3 681 3.3 522

SEAGULL-BAY SUPERSIRE-ET 69981349

TV TL TY TD

EX-90 EEV 6-06 GM GTPI +2600

NO-FLA MAURICE 34681-ET 3010979654

99%RHA

GP-82 G+G+V 2-04 GTPI +2300

2-10 3 355 32890 4.3 1400 3.3 1100

1-10 3 305 22850 4.3 991 3.3 759



No-Fla Shine-ET GP-83 2Y
Maternal Sister to Grandam of Lots 33 & 34

**LOT 33:
NO-FLA GS DELTA 4342-ET**

**LOT 34:
NO-FLA GS DELTA 4344-ET**

Born 12/3/2016 Reg. 840003141244525 97%
GTPI +2781 (8/2017)
PTA +1312M +101F +51P
PTA +948NM +0.19%F +0.03%P
PTA +8.8PL 2.72SCS +2.9DPR 3.7%DCE 7.1%SCE
PTA +1.39T +1.84UDC +1.11FLC
+204FE +3.0FI +976CM

Born 12/4/2016 Reg. 840003141244526 97%
GTPI +2749 (8/2017)
PTA +1570M +96F +49P
PTA +909NM +0.13%F +0.00%P
PTA +9.0PL 2.68SCS +2.6DPR 4.6%DCE 7.6%SCE
PTA +1.54T +2.18UDC +1.32FLC
+193FE +2.5FI +923CM

Never been worked - They sell ready to IVF

*Consigned by:
Genosource
563-451-5866 Tim*

MR MOGUL DELTA 1427-ET 72128216

TV TL TY TD

GTPI +2849
PTA +1817M +97F +57P 98% 8/2017
PTA +951NM +0.10%F +0.01%P 100%US
PTA +8.0PL 2.79SCS +3.7DPR 5.0%DCE
PTA +1.95T +2.51UDC +1.41FLC

**NO-FLA SUPERSIRE 39182-ET 3125078790
96%RHA**

GTPI +2479
PTA +1011M +78F +43P 80%R 8/2017
PTA +752NM +0.14%F +0.04%P
PTA 7.9PL 2.79SCS +1.2DPR 4.4%DCE
PTA +0.88T +1.18UDC +0.53FLC 76%R 8/2017
1-09 3 305 24110 4.3 1009 3.4 809

MOUNTFIELD SSI DCY MOGUL-ET 3006972816 TR

TV TL TY TD

EX-91 EEVE 5-03 GM GTPI +2494
MISS OCD ROBST DELICIOUS-ET 3006989479
VG-87 +EV+V 3-05 GMD DOM GTPI +2708
2-05 2 365 33780 3.3 1121 3.1 1047

SEAGULL-BAY SUPERSIRE-ET 69981349

TV TL TY TD

EX-90 EEVW 6-06 GM GTPI +2600
**NO-FLA EPIC KENDYL 34393-ET 3010979366
93%RHA**
GTPI +2231
PTA +639M +51F +32P 84%R 8/2017
PTA +486NM +0.10%F +0.05%P
PTA +4.6PL 2.86SCS -0.5DPR 6.2%DCE
PTA +1.30T +1.35UDC +1.41FLC 78%R 8/2017
2-11 3 305 30040 4.1 1234 3.4 1010
1-09 3 305 18190 4.1 739 3.5 642

3rd - 4th Dams:

No-Fla Massey 30194-TW VG-85

3-06 3 305 30810 3.6 1114 3.4 1043
2-01 3 365 26990 3.7 1010 3.4 920

No-Fla Oman Liana VG-85 VG-MS

4-03 3 305 23300 4.7 1091 3.5 818



Seagull-Bay Miss America VG-87 DOM

3rd Dam of Lot 35

LOT 35: MS TJR EXTRM DTR 40027-ET *RC

Born 4/2/2017 Reg. 840003142704132 RC

GTPI +2788 (8/2017)
 PTA +1481M +79F +53P
 PTA +884NM +0.09%F +0.03%P
 PTA +8.2PL 2.70SCS +2.4DPR 5.7%DCE 7.4%SCE
 PTA +2.36T +3.34UDC +1.25FLC
 +181FE +2.9FI +1.5LIV +915CM
Great UDC!!
#6 GTPI RC Heifer of the Breed (8/2017)

Consigned by:
 Jerry Jorgensen &
 TJR Genetics
 563-451-5866 Tim

RONELEE MIDNIGHT DETOUR-ET 731143748 TV TL TY TD

GTPI +2686
 PTA +1305M +73F +50P 79%R 8/2017
 PTA +850NM +0.09%F +0.04%P 100%US
 PTA +8.3PL 2.77SCS +2.5DPR 5.9%DCE
 PTA +1.73T +2.78UDC +0.91FLC 78%R 8/2017

SEAGULL-BAY D EXTREME-ET 3128978068 RC TL TD

GTPI +2690
 PTA +1569M +67F +42P 78%R 8/2017
 PTA +844NM +0.03%F -0.02%P
 PTA +9.1PL 2.78SCS +4.6DPR 4.6%DCE
 PTA +1.22T +2.05UDC +1.48FLC 78%R 8/2017
Due in January 2018
Prolific Embryo Producer

S-S-I EPIC MIDNIGHT-ET 3009554689 TV TL TY TD

EX-90 GTPI +2556
RONELEE FEELING FANCY-ET 142066386
 EX-90 GTPI +2478
 2-04 3 305 27080 3.8 1018 3.2 854

MR MOGUL DELTA 1427-ET 72128216 TV TL TY TD

GTPI +2849
MS AMERICA ECSTASY-ET 72641546 RC TL TD
 GP-80 ++G+G 2-06 GTPI +2247
 2-02 3 365 32590 3.6 1160 3.4 1112

3rd - 7th Dams:

Seagull-Bay Miss America-ET VG-87 DOM
 2-03 2 365 31750 4.3 1368 3.5 1120
Full sister to Supersire
Ammon-Peachey Shauna-ET EX-91 GMD DOM
 6-03 3 365 40290 3.7 1479 3.2 1309
Popular AI sons include Supersire, Headliner, Platinum, Secretariat & more
Pine-Tree Martha Sheen-ET VG-86 VG-MS DOM
 1-11 3 365 31210 4.2 1305 3.1 968
Pine-Tree Missy Martha-ET VG-86 VG-MS DOM
 2-02 3 365 34730 3.6 1266 3.1 1070
Wesswood-HC Rudy Missy-ET 3E-92 GMD DOM
 4-11 3 365 40880 4.1 1665 3.4 1385
Global Cow of the Year 2014
18 sons & 107 grandsons in AI



S-S-I Moonry Myesha 9071-ET VG-85 VG-MS DOM
Grandam of Lot 36

LOT 36: GENOSOURCE MD MAYA 36737-ET

Born 6/12/2017 Reg. 840003128013584 99%-I

GTPI +2799 (8/2017)

PTA +1323M +97F +59P

PTA +959NM +0.17%F +0.07%P

PTA +7.9PL 2.90SCS +2.5DPR 3.2%DCE 5.8%SCF

PTA +1.43T +1.82UDC +1.74FLC

+229FE +2.6FI +3.0LIV +1005CM

Unique Sire Stack

Negative Stature; Low Calving Ease

Consigned by:
Ri-Val-Re Genetics
517-712-0359

BACON-HILL PETY MODESTY-ET 3013654627 TY

GTPI +2838

PTA +1800M +91F +61P 79%R 8/2017

PTA +957NM +0.09%F +0.02%P 100%US

PTA +7.9PL 3.04SCS +2.6DPR +3.1%DCE

PTA +2.10T +2.64UDC +2.17FLC 8/2017

SIEMERS MOGUL PETY 3010660326 TY

GTPI +2414

BACON-HILL SUPRS MODESTY-ET 3010945893

VG-85 DOM GTPI +2476

2-01 3 305 31181 3.8 1911 3.0 924

TRIPLECROWN JW TESLA 186-ET 3128860446

99%-I TL TD

GTPI +2662

PTA +1522M +80F +53P 75%R 8/2017

PTA +835NM +0.08%F +0.03%P

PTA +7.6PL 2.99SCS +3.1DPR 4.4%DCE

PTA +1.51T +1.30UDC +1.46FLC 75%R 8/2017

Due January 2018

#4 GTPI Tesla daughter in the World!

RIVER-BRIDGE CO-OP TESLA-ET 71753198

99%RHA TV TL TY TD

GTPI +2489

S-S-I MOONRY MYESHA 9071-ET 3012130340

99%-I

VG-85 VVV+V 2-10 DOM GTPI +2577

2-01 2 365 33260 4.0 1330 3.3 1089

Dam of Triplecrown JW Matters +2707

11 daughters over +900NM

Dam of Genosource Mint 35894-ET (+2902G), sold for \$140,000 in 2017 Genetic Fiesta Dos

3rd - 12th Dams:

S-S-I Bookem Modesto7269-ET VG-87 DOM

3-03 3 364 26940 3.7 1090 3.8 1128

Grandam of Jedi, Jett & Flagship

Roylane Shot Mindy 2079-ET VG-86 DOM

2-02 3 305 28730 4.4 1263 3.4 964

Maternal sister to:

Roylane Socra Mira 1760-ET 2E-91 DOM

LIFE 1430 149930 3.8 5661 3.2 4849

Full sister to Robust

Seagull-Bay Oman Mirror-ET VG-86 DOM

3-00 2 365 36430 4.4 1606 3.6 1304

Seagull-Bay Manat Mirage-ET EX-90 EX-MS DOM

3-06 3 365 35900 3.8 1364 3.4 1229

Lynmead Clesius Minnow-ET 2E-91 GMD DOM

4-10 3 365 49550 3.7 1857 3.2 1592

7-00 3 365 47140 3.5 1637 3.1 1479

LIFE 2626 255910 3.7 9446 3.3 8481

CMV Melwood Mindy-ET VG-85 GMD DOM

4-01 2 365 36341 3.6 1305 3.4 1239

Briarpatch-R Misty-ET VG-85 GMD DOM

3-08 2 365 24690 4.1 1058 3.2 838

Rilara Mars Las Ravena EX-91 GMD DOM

4-03 2 305 29030 4.6 1329

Rilara Haven CHarming Las-Twin VG-87 GMD DOM

Rag Apple Locust-Grove Charm VG-86 GMD DOM

5-02 2 305 26321 3.6 948



Synergy Suprsre Strategy-ET VG-86 EX-MS

Grandam of Lot 37

LOT 37: TJR FRAZZLED DATE 80114-ET

Born 7/27/2017 Reg. 840003144506050

GTPI +2803 (9/2017 Prelim)
 PTA +1676M +99F +59P
 PTA +997NM +0.14%F +0.03%P
 PTA +9.9PL 2.63SCS +2.3DPR 4.1%DCE 7.2%SCE
 PTA +1.20T +1.27UDC +1.39FLC
 +205FE +2.7FI +3.0LIV +1023CM

Consigned by:
 TJR Genetics
 563-451-5866 Tim

MELARRY JOSUPER FRAZZLED-ET 74261651 TV TL TY TD 99%RHA

GTPI +2788
 PTA +2502M +100F +76P 79%R 8/2017
 PTA +964NM +0.03%F +0.00%P 100%US
 PTA +8.0PL 2.67SCS +1.0DPR 5.7%DCE
 PTA +1.18T +1.44UDC +0.87FLC 78%R 8/2017

SYNERGY RUBICON DREW-ET 3130259800 TL TD

GTPI +2625
 PTA +1462M +86F +50P 78%R 8/2017
 PTA +835NM +0.11%F +0.02%P
 PTA +8.0PL 2.72SCS +1.5DPR 3.5%DCE
 PTA +1.28T +1.42UDC +1.03FLC 78%R 8/2017
 Due in November

UECKER SUPERSIRE JOSUPER-ET 70726929 99%-I TY

VG-86-3YR-CAN GTPI +2728
MELARRY SHOTGLASS FRAZZLE 72292872
 VG-85 GTPI +2414
 2-00 2 365 33740 4.1 1388 3.3 1099

EDG RUBICON-ET 72128125 TV TL TY TD

GM GTPI +2723
SYNERGY SUPRSRE STRATEGY-ET 72325033
 VG-86 V+++E 4-03 GTPI +2393
 2-01 3 365 30270 4.0 1196 3.4 1029
 Prolific Embryo Producer

3rd - 15th Dams:

Sure-View Oman Shimmer-ET VG-87 EX-MS
 4-05 3 365 36280 3.2 1164 3.4 1240
Shawnee Shottle Shiney-ET 2E-92 DOM
 5-11 3 365 45720 4.8 2215 3.2 1465
 LIFE 2066 186860 4.6 8572 3.5 6448
Shawnee Durham Stratos VG-86 VG-MS DOM
 4-09 2 365 40790 3.7 1513 3.1 1254
Embryos exported; Sons in AI
Shawnee Rudolph Sheryl EX-90 GMD DOM
 LIFE 2247 182580 3.7 6748 3.1 5693
Conant-Acres-HS Sara-ET GP-82 GMD DOM
 3-01 2 365 29790 3.2 948 3.0 903
Shade-E-Lane-C Sahara-ET VG-88 DOM
 5-08 2 365 24850 3.6 906 3.6 884
Conant-Acres-JY SWD Sabra-ET VG-88 DOM
Swampy-Hollow Elevation Sweet 3E-92 GMD DOM
 LIFE 2121 115148 4.7 5467
Swampy-Hollow Sugar-Twin 3E-91 GMD DOM
 6-08 2 365 24299 4.8 1157 4.8 1157
Swampy-Hollow Lad Connie VG-87
Swampy Hollow Cinderella VG-88
Swampy Hollow Inka Cindy-TW 3E-92
 LIFE 7 lacs 132507 3.9 5176
Valerie Cherrydale Lucifer 3E-91 GMD
 LIFE 13 lacs 180561 4.2 7573



T-C-G Super Lainey-ET VG-86
3rd Dam of Lot 38

LOT 38: TRES-REYNAS FORTUNE 4337-ET

Born 8/1/2017 Reg. 840003146056128 99%

GTPI +2811 (9/2017 Prelim)
PTA +1873M +88F +62P
PTA +925NM +0.07%F +0.02%P
PTA +8.8PL 2.55SCS +2.1DPR 7.9%SCE
PTA +2.47T +1.87UDC +1.60FLC
+1.7LIV +1113DWP
Early & Rare Fortune!

Consigned by:
Alfredo Angula Gaxiola
208-410-1546

PROGENESIS FORTUNE 12302930C 99%

GTPI +2716
PTA +1290M +64F +46P 77%R 8/2017
PTA +792NM +0.06%F +0.03%P 100%US
PTA +7.8PL 2.50SCS +3.3DPR 5.4%DCE 8.7%SCE
PTA +2.44T +2.61UDC +1.73FLC 75%R 8/2017

**TRES-REYNAS DELTA 148-ET 3128860408 99%
TL TD**

GTPI +2703
PTA +2183M +91F +56P 77%R 8/2017
PTA +888NM +0.13%F -0.04%P
PTA +7.9PL 2.71SCS +2.8DPR 4.7%DCE
PTA +1.39T +1.42UDC +0.54FLC 77%R 8/2017

**LADYS-MANOR OCTOBERFEST-ET 3013129308
99%**

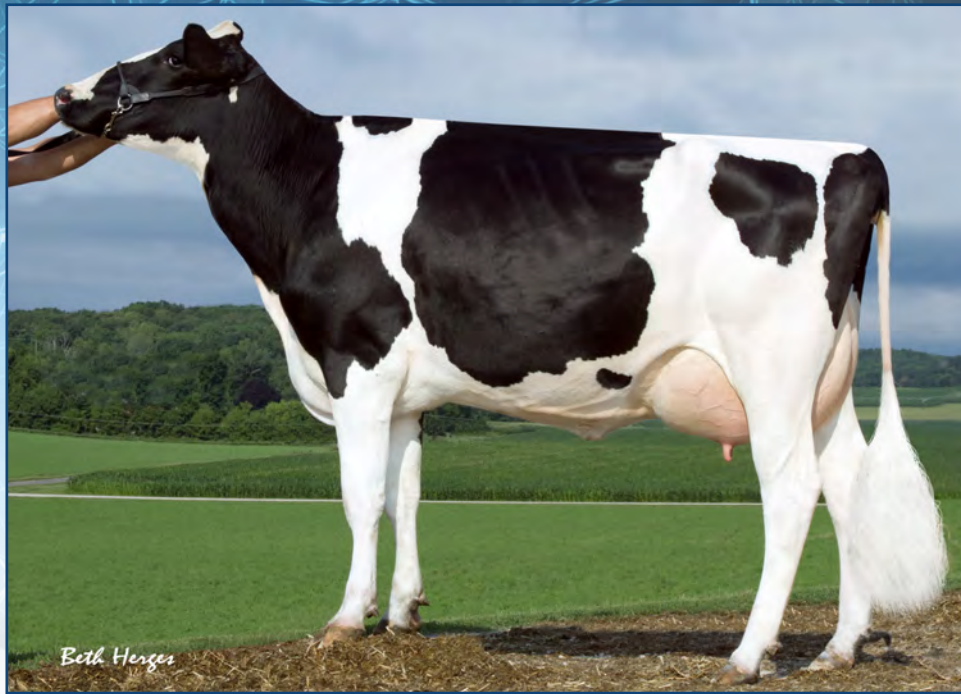
GTPI +2487
MS HUE TANGO 57644 3010356391
VG-86
2-04 2 305 25580 4.4 1128 3.5 893

**MR MOGUL DELTA 1427-ET 72128216
TV TL TY TD**

GTPI +2849
TRES-REYNAS SS LIZZY-ET 72285804 99%-I TL TD
GP-82 V++FV 2-02 GTPI +2401
2-01 3 355 33310 3.9 1289 3.0 1001

3rd - 11th Dams:

T-C-G Super Lainey-ET VG-86
2-00 3 365 31650 3.5 1092 3.3 1038
Straussdale Jose Lysa-ET VG-86
2-02 3 365 35440 2.8 1010 3.0 1064
Straussdale B Ramos Lillian VG-86 DOM
4-00 3 365 33460 3.5 1186 3.3 1089
Straussdale B Outside Lizzy EX-90 GMD DOM
1-11 3 365 34520 3.9 1342 3.1 1077
Straussdale B Durham Lizza EX-92 2E GMD DOM
3-02 2 365 34360 3.6 1235 3.3 1147
LIFE 2188 141710 3.6 5153 3.3 4619
Straussdale Rud Lou Lou-ET VG-86 GMD
3-10 2 365 32590 3.7 1281 3.3 1067
Beslea Astro Jet Lexis 2E-91 EX-MS
6-01 2 364 32820 3.6 1190 3.0 988
LIFE 2322 144591 3.6 5149 3.0 4292
Beslea Sensation Flower VG-85-CAN
4-03 2 348 22463 3.3 734 2.9 653
Cationdale Super Meg VG-85-CAN
LIFE 5 lac 119822 3.3 3920 3.0 2877



Sandy-Valley Plane Sapphire-ET VG-87 GMD DOM

3rd Dam of Lots 39A & 39B

LOT 39: 1ST CHOICE FEMALE
A: GENOSOURCE FRZ REMINISCE-ET B: GENOSOURCE FRZ REMI-ET

Born 7/29/2017 Reg. 840003142704688 99% #40583

GTPI +2807 (9/2017)
 PTA +2627M +98F +77P
 PTA +996NM +0.00%F +0.00%P
 PTA +9.4PL 2.71SCS +1.5DPR 6.6%DCE 7.5%SCE
 PTA +1.15T +1.50UDC +0.76FLC
 +230FE +2.1FI +2.4LIV +1003CM
Extreme Production & NM\$

Born 8/12/2017 Reg. 840003142704709 99% #40604

GTPI +2807 (9/2017)
 PTA +2139M +91F +64P
 PTA +998NM +0.04%F +0.00%P
 PTA +10.1PL 2.57SCS +2.2DPR 4.1%DCE 5.8%SCE
 PTA +1.16T +1.71UDC +0.80FLC
 +207FE +2.7FI +2.3LIV +1012CM
Extreme NM\$ & CE

Consigned by:
 Genosource
 563-451-5866 Tim

MELARRY JOSUPER FRAZZLED-ET 74261651 TV TL TY TD 99%RHA

GTPI +2788
 PTA +2502M +100F +76P 79%R 8/2017
 PTA +964NM +0.03%F +0.00%P 100%US
 PTA +8.0PL 2.67SCS +1.0DPR 5.7%DCE
 PTA +1.18T +1.44UDC +0.87FLC 78%R 8/2017

GENOSOURCE RDELTA 32636-ET 3126776641

GTPI +2685
 PTA +1890M +82F +55P 79%R 8/2017
 PTA +857NM +0.04%F -0.01%P
 PTA +8.8PL 2.81SCS +3.2DPR 5.8%DCE
 PTA +1.42T +1.64UDC +1.03FLC 78%R 8/2017
Due in January

UECKER SUPERSIRE JOSUPER-ET 70726929 99%-I TY

VG-86-3YR-CAN GTPI +2728
MELARRY SHOTGLASS FRAZZLE 72292872
 VG-85 GTPI +2414
 2-00 2 365 33740 4.1 1388 3.3 1099

MR MOGUL DELTA 1427-ET 72128216

TV TL TY TD
 GTPI +2849
SANDY-VALLEY ROBUST RUBY-ET 69998487
 EX-90 VEVEV 6-04 GTPI +2523
 2-04 2 305 29450 3.2 950 3.1 916
Dam of EDG Rubicon-ET

3rd - 8th Dams:

Sandy-Valley Plane Sapphire VG-87 GMD DOM
 2-00 2 365 39130 3.3 1301 2.8 1101
Sandy-Valley Bolt Sheila-ET EX-90
 2-02 2 365 44790 3.6 1607 2.9 1294
 LIFE 1183 136150 3.6 4922 2.8 3834
Sandy-Valley Forbid Sully VG-87 GMD
 2-03 2 365 35110 3.7 1310 3.1 1095
Orthoapple Marshall Alia-ET VG-89 GMD DOM
 2-04 2 365 36210 4.4 1605 3.2 1154
Regancrest-JB Tatum-ET VG-87 DOM
 2-04 2 365 32682 3.6 1163 3.2 1059
Regancrest Tesk Della EX-90 EX-MS GMD DOM
 5-11 2 365 35510 3.5 1234 3.2 1134
Nom. Global Cow of the Year 2006



Sandy-Valley Robust Ruby-ET EX-90
Grandam of Lot 40

LOT 40: 5 #1 FEMALE IVF KENNEDY EMBRYOS

5 #1 Female IVF Kennedy Embryos

PA +2784GTPI +957NM +1464M +104F +8.4PL +2.6DPR 6.5%SCE

Consigned by:
Gensource
563-451-5866 Tim

PINE-TREE MOD KENNEDY713-ET 3132117165

GTPI +2861
PTA +1487M +111F +58P 76%R 8/2017
PTA +1024NM +0.20%F +0.05%P 100%US
PTA +9.0PL 2.91SCS +3.4 DPR 3.0%DCE
PTA +1.72T +1.65UDC +0.99FLC 75%R 8/2017

GENOSOURCE DRUBY 32513-ET 3126776518

GTPI +2707
PTA +1442M +97F +51P 79%R 8/2017
PTA +890NM +0.16%F +0.02%P
PTA +7.8PL 2.83SCS +1.8DPR 5.2%DCE
PTA +1.44T +1.75UDC +1.56FLC 78%R 8/2017
Due in March 2018

BACON-HILL PETY MODESTY-ET 3013654627 TY

GTPI +2838
OCD SUPERSIRE 9882-ET 3011890130
VG-86 VV++V 2-10 DOM GTPI +2625
2-01 3 365 31870 4.1 1310 3.4 1083

MR MOGUL DELTA 1427-ET 72128216

TV TL TY TD
GTPI +2849
SANDY-VALLEY ROBUST RUBY-ET 69998487
EX-90 VEVEV 6-04 GTPI +2523
2-04 2 305 29450 3.2 950 3.1 916
Dam of EDG Rubicon-ET

3rd - 8th Dams:

Sandy-Valley Plane Sapphire VG-87 GMD DOM
2-00 2 365 39130 3.3 1301 2.8 1101
Sandy-Valley Bolt Sheila-ET EX-90
2-02 2 365 44790 3.6 1607 2.9 1294
LIFE 1183 136150 3.6 4922 2.8 3834
Sandy-Valley Forbid Sully VG-87 GMD
2-03 2 365 35110 3.7 1310 3.1 1095
Orthoapple Marshall Alia-ET VG-89 GMD DOM
2-04 2 365 36210 4.4 1605 3.2 1154
Regancrest-JB Tatum-ET VG-87 DOM
2-04 2 365 32682 3.6 1163 3.2 1059
Regancrest Tesk Della EX-90 EX-MS GMD DOM
5-11 2 365 35510 3.5 1234 3.2 1134
Nom. Global Cow of the Year 2006



S-S-I Moonry Myesha 9071-ET VG-85 DOM
Grandam of Lot 41

LOT 41: 6 #1 FEMALE IVF KENNEDY EMBRYOS

6 #1 Female IVF Kennedy Embryos

PA +2817GTPI +975NM +1496M +101F +8.5PL +2.8DPR

Consigned by:
Gensource
563-451-5866 Tim

PINE-TREE MOD KENNEDY713-ET 3132117165

GTPI +2861
PTA +1487M +111F +58P 76%R 8/2017
PTA +1024NM +0.20%F +0.05%P 100%US
PTA +9.0PL +2.91SCS +3.4 DPR 3.0%DCE
PTA +1.72T +1.65UDC +0.99FLC 75%R 8/2017

GENOSOURCE-I JEDI MARLA 12365222C 99%

GTPI +2774
PTA +1505M +92F +69P 75%R 8/2017
PTA +927NM +0.13%F +0.08%P
PTA +7.9PL +2.98SCS +2.2DPR 3.2%DCE
PTA +1.34T +1.62UDC +1.10FLC 75%R 8/2017

BACON-HILL PETY MODESTY-ET 3013654627 TY

GTPI +2838
OCD SUPERSIRE 9882-ET 3011890130
VG-86 VV++V 2-10 DOM GTPI +2625
2-01 3 365 31870 4.1 1310 3.4 1083

S-S-I MONTROSS JEDI-ET 3123886035 99% TV TL TY TD

GTPI +2821
S-S-I MOONRY MYESHA 9071-ET 3012130340 99%-I
VG-85 VVV+V 2-10 DOM GTPI +2577
2-01 2 365 33260 4.0 1330 3.3 1089
Dam of Triplecrown JW Matters +2707
11 daughters over +900NM
Dam of Gensource Mint 35894-ET(+2902G), sold for \$140,000 in 2017 Genetic Fiesta Dos

3rd - 12th Dams:

S-S-I Bookem Modesto7269-ET VG-87 DOM
3-03 3 364 26940 3.7 1090 3.8 1128
Grandam of Jedi, Jett & Flagship

Roylane Shot Mindy 2079-ET VG-86 DOM
2-02 3 305 28730 4.4 1263 3.4 964

Maternal sister to:
Roylane Socra Mira 1760-ET 2E-91 DOM
LIFE 1430 149930 3.8 5661 3.2 4849

Full sister to Robust
Seagull-Bay Oman Mirror-ET VG-86 DOM
3-00 2 365 36430 4.4 1606 3.6 1304

Seagull-Bay Manat Mirage-ET EX-90 EX-MS DOM
3-06 3 365 35900 3.8 1364 3.4 1229

Lynmead Clesius Minnow-ET 2E-91 GMD DOM
4-10 3 365 49550 3.7 1857 3.2 1592

7-00 3 365 47140 3.5 1637 3.1 1479
LIFE 2626 255910 3.7 9446 3.3 8481

CMV Melwood Mindy-ET VG-85 GMD DOM
4-01 2 365 36341 3.6 1305 3.4 1239

Briarpatch-R Misty-ET VG-85 GMD DOM
3-08 2 365 24690 4.1 1058 3.2 838

Rilara Mars Las Ravena EX-91 GMD DOM
4-03 2 305 29030 4.6 1329

Rilara Haven Charming Las-Twin VG-87 GMD DOM
Rag Apple Locust-Grove Charm VG-86 GMD DOM

5-02 2 305 26321 3.6 948



Peak Menna Ahead 850-ET VG-89 EX-MS 2Y
Grandam of Lot 42

LOT 42: 4 #1 FEMALE IVF KENNEDY EMBRYOS

4 #1 Female IVF Kennedy Embryos

PA +2807GTPI +953NM +1477M +95F +8.8PL +3.2DPR 6.5%SCE

Consigned by:
Gensource
563-451-5866 Tim

PINE-TREE MOD KENNEDY713-ET 3132117165

GTPI +2861
PTA +1487M +111F +58P 76%R 8/2017
PTA +1024NM +0.20%F +0.05%P 100%US
PTA +9.0PL 2.91SCS +3.4 DPR 3.0%DCE
PTA +1.72T +1.65UDC +0.99FLC 75%R 8/2017

GENOSOURCE DELTA 33940 3126777945

GTPI +2753
PTA +1468M +80F +51P 77%R 8/2017
PTA +883NM +0.09%F +0.02%P
PTA +8.5PL 2.87SCS +2.9DPR 4.7%DCE
PTA +2.07T +2.55UDC +1.13FLC 77%R 8/2017

BACON-HILL PETY MODESTY-ET 3013654627 TY

GTPI +2838
OCD SUPERSIRE 9882-ET 3011890130
VG-86 VV++V 2-10 DOM GTPI +2625
2-01 3 365 31870 4.1 1310 3.4 1083

MR MOGUL DELTA 1427-ET 72128216

TVTL TYTD
GTPI +2849
PEAK MENNA AHEAD 850-ET 3125475806
VG-89 VEVVE 2-10 GTPI +2470
GTPI +1123M +56F +41P 79%R 8/2017
PTA +653NM +0.05%F +0.02%P
PTA +6.2PL 2.92SCS +2.5DPR 4.9%DCE
PTA +1.67T +1.59UDC +1.28FLC 81%R 8/2017
1-10 3 296 28113 3.3 929 3.2 908
2-09 3 135 18886 2.6 494 2.9 541 Inc

3rd - 12th Dams:

S-S-I Shamrock Menna7392-ET VG-85 VG-MS
1-11 3 365 26870 4.1 1090 3.2 861
Roylane Shot Mindy 2079-ET VG-86 VG-MS DOM
2-02 3 305 28730 4.4 1263 3.5 1018

Maternal sister to:

Roylane Socra Mira 1760-ET 2E-91 DOM
5-11 3 305 40080 3.5 1411 3.1 1252
LIFE 1430 149930 3.8 5661 3.2 4849

Full sister to Robust

Seagull-Bay Oman Mirror-ET VG-86 DOM
3-00 2 365 36430 4.4 1606 3.6 1304
Seagull-Bay Manat Mirage-ET EX-90 EX-MS DOM
3-06 3 365 35900 3.8 1364 3.4 1229
Lynmead Clesius Minnow-ET 2E-91 GMD DOM
4-10 3 365 49550 3.7 1857 3.2 1592
7-00 3 365 47140 3.5 1637 3.1 1479
LIFE 2626 255910 3.7 9446 3.3 8481
CMV Melwood Mindy-ET VG-85 GMD DOM
4-01 2 365 36341 3.6 1305 3.4 1239
Briarpatch-R Misty-ET VG-85 GMD DOM
3-08 2 365 24690 4.1 1058 3.2 838
Rilara Mars Las Ravena EX-91 GMD DOM
4-03 2 305 29030 4.6 1329
Rilara Haven Charming Las-Twin VG-87 GMD DOM
Rag Apple Locust-Grove Charm VG-86 GMD DOM
5-02 2 305 26321 3.6 948



Starmark Ad Hotstuff-Red-ET 2E-94

Dam of Lot 43



Miss Hot Mama-Red-ET EX-92

Maternal sister to Lot 43

LOT 43: 5 #1 IVF FEMALE AVALANCHE EMBRYOS

Selling 5 #1 IVF direct thaw embryos made w/ female sorted semen sired by Avalanche

Potential 10th gen EX & R&W!

Maternal sister:

Miss Hot Mama-Red-ET EX-92

Consigned by:
Bruce Hinz & Kevin Spreng
585-689-0249

DYMETHOLM MR APP AVALANCHE-TW RC 11957107C 99%

GTPI +104M +20F +12P 79%R 8/2017
PTA +232NM +0.07%F +0.04%P 100%US
PTA +1.8PL 2.87SCS +0.1DPR 6.1%DCE
PTA +3.72T +2.90UDC +2.48FLC 78%R 8/2017

STARMARK AD HOTSTUFF-RED-ET 13825321

EX-94 EEEEE 2E 6-02
5-00 2 365 33690 5.6 1896 3.1 1051
3-04 2 305 22960 4.5 1040 3.4 774
2-04 2 257 19140 4.3 831 3.7 700
LIFE 119270 5.1 6056 3.5 4136
Res. All-America R&W Aged Cow 2013
Grand Champion, NY Spring R&W Show 2013
All-American 5-Year-Old 2012
Res. Grand Champion, Grand Int'l R&W Show 2012
Nom. All-America R&W Jr 3-Year-Old 2010
All-American R&W Spring Calf 2007

DE-SU BKM MCCUTCHEN 1174-ET 69990138 99%

EX-93 EEEE 4-10 GM GTPI +2355
KHW REGMENT APPLE C-RED-ETN 70244494 CV
VG-89-3Y-CAN
3-07 2 365 36949 4.2 1554 3.6 1332
Res. Grand Champion Supreme Laitier R&W 2014

KHW KITE ADVENT-RED-ET 133002953 TV TL TY TD

GTPI +1554
SCIENTIFIC SS HOTTIE-RED-ET 136322159
EX-93 EEEEE 2E 7-04
4-09 2 365 33120 4.5 1475 3.5 1159
7-09 2 365 29550 4.7 1377 3.1 926
2-05 2 365 29170 4.6 1343 3.6 1038
LIFE 1750 139420 4.6 6364 3.5 4873

Miss Hot Mama-Red EX-92

2016 Star of the Breed
Nom. All-American R&W Sr 2, 2016
Unanimous All-American R&W Milking Yearling 2015
Res. All-Canadian B&W Milking Yearling 2015
Res. All-American R&W Senior Calf 2014

3rd - 9th Dams:

Scientific Raes Hope-Red-ET EX-92
4-03 2 365 36894 3.5 1302 3.2 1171
Scientific Jubilant Rae-ET RC EX-90 DOM
5-11 3 365 38880 4.1 1608 3.6 1403
C Hanoverhill Tony Rae 3E-96 GMD DOM 5*
LIFE 4 lac 166397 4.1 6903 3.4 5611
HM All-American Jr. 2-Year-Old 1988
Hanoverhill TT Roxette-ET 2E-94 GMD
LIFE 5 lac 164789 4.1 6759 3.1 4367
C Glenridge Citation Roxy 4E-97 GMD DOM
LIFE 3620 209784 4.5 9471
2X Queen of the Breed
More than 300 Excellent descendants
C Norton Court Model Vee EX-90 GMD 6*
LIFE 4183 218636 3.9 8581
C Norton Court Reflection Vale VG-CAN 5*
LIFE 14 lac 249580 3.7 9295



Westcoast Absolute Roulette-Red VG-88

Dam of Lot 44



T-C-G Gold Ring-ET RC EX-93

Grandam of Lot 44

LOT 44: 6 #1 FEMALE IVF DIAMONDBACK EMBRYOS

6 #1 Female IVF Diamondback embryos

Consigned by:
Winstar Genetics & Josh & Bill Wright
208-221-0904

**MR D APPLE DIAMONDBACK 840003013721049
RC TY**

GTPI +1960
PTA +3.32T +2.59UDC +2.33FLC 79%R 8/2017

**WESTCOAST ABSOLUTE ROULETTE-RED
11768849C TLTD**

VG-88 VEVVV 2-10 GTPI +1682
PTA +2.76T +2.91UDC +2.17FLC 81%R 8/2017
2-00 3 365 31130 4.3 1345 3.3 1020
1st Senior 2-Year-Old, Western Spr. Nat'l R&W 2016
HM Int. Champion, Western Spr. Nat'l R&W 2016
1st Senior 2-Year-Old, Midwest Spr. Nat'l R&W 2016
1st Senior 2-Year-Old, Eastern Idaho State Fair 2016
1st Senior 2-Year-Old, Utah State Fair 2016

**VAL-BISSON DOORMAN-ET 107281711C 99%-I TV
TLTYTD**

GTPI +2301
MS DELICIOUS APPLE-RED-ET 139236776 TV TD
EX-94 EEEEE 2E
7-02 2 365 46510 4.0 1844 3.1 1424
Res. All-American 125,000-Lb. Cow 2015
Res. All-American Aged Cow 2015

**APPLES ABSOLUTE-RED-ET 139358472 CV TL TY
TD**

EX-94 EEVE 5-08 GTPI +1515
PTA +2.84T +3.26UDC +2.01FLC 99%R 8/2017
T-C-G GOLD RING-ET RC 69440661C
EX-93-5Y-CAN
4-11 2 314 33955 3.0 1008 3.2 1098
3-10 2 308 28386 3.2 902 3.2 922
1-11 2 365 24901 3.5 866 3.4 855
1st 5-Year-Old, BC Spring Show 2016
2nd Senior 3-Year-Old, Western Fall National 2014

3rd - 8th Dams:

Pappys Sept Storm Rhonda-ET VG-88
6-00 3 340 25670 5.1 1303 3.6 918
2nd Winter Yearling, Western Spring National 2007
Maternal sister to Rhonda:
Pappys Goldwyn Rave-ET VG-88-CAN
Res. All-American Senior 2-Year-Old 2012
All-American & All-Canadian Winter Yearling 2011
Markwell Durham Raven-ET *TV EX-93 3E
4-07 2 365 38050 3.7 1422 3.2 1210
Nom. All-American Produce of Dam 2016
1st 5-Year-Old & HM Grand, Utah State Sh. 2009
1st Junior 2-Year-Old, Western Spring National 2006
Markwell Rudolph Rhoda-ET EX-92 3E DOM
3-11 2 365 33890 4.0 1345 3.3 1114
Markwell Bstar E Raven-ET EX-95 3E GMD DOM
4-09 2 365 37610 4.3 1580 3.4 1255
LIFE 2387 160020 4.1 6623 3.6 5763
Markwell Mark Elite EX-92 4E GMD DOM
7-00 2 365 36230 3.9 1426 3.2 1165
LIFE 3736 211430 3.8 8108 3.6 533
Rockalli Mars Emily EX-94 4E GMD DOM
6-03 2 365 26970 4.0 1081 3.2 853
LIFE 3113 182970 3.8 7016 3.5 6330



Petittlerc Goldwyn Silver EX-92

Dam of Lot 45

LOT 45: 4 #1 FEMALE IVF AVALANCHE EMBRYOS

4 #1 Female IVF Avalanche Embryos

Consigned by:
Crave Brothers & Budjon Farms
920-960-0350

DYMENTHOLM MR APP AVALANCHE-TW RC 11957107C 99%

GTPI +104M +20F +12P 79%R 8/2017
PTA +232NM +0.07%F +0.04%P 100%US
PTA +1.8PL 2.87SCS +0.1DPR 6.1%DCE
PTA +3.72T +2.90UDC +2.48FLC 78%R 8/2017

PETITLERC GOLDWYN SILVER 107441154C 99%

EX-92 EEEVE 4-04
2-01 2 365 24645 4.4 1076 3.5 873
4th Senior 2-year-old, QC Spring Show 2014
8th Senior 2-year-old, Royal Winter Fair 2014
Nom. All-Quebec Winter Yearling 2013
HM Junior Champion, Montmagny 2013
HM Junior Champion, Montmagny 2012

DE-SU BKM MCCUTCHEN 1174-ET 69990138 99%

EX-93 EEEE 4-10 GM GTPI +2355
KHW REGMENT APPLE C-RED-ETN 70244494 CV
VG-89-3Y-CAN
3-07 2 365 36949 4.2 1554 3.6 1332
Res. Grand Champion Supreme Laitier R&W 2014

BRAEDALE GOLDWYN 10705608C TV TL TY

GP-84-8Y-CAN GM GTPI +1849
BRABANTDALE JASPER SPADES-ET 9449290C 99%
VG-88-4Y-CAN 14*
3-05 2 359 34356 4.3 1488 3.3 1122
2-03 2 365 28585 3.8 1100 3.4 970
5-03 2 325 20653 3.8 780 3.1 635
1st Senior 3-year-old, Portneuf 2009
HM Grand Champion, Three Rivers 2008
HM Grand Champion, Portneuf 2008
1st Senior 2-year-old, Montmagny 2008
5 EX & 14 VG daughters

Petittlerc Goldwyn Silver Daughters:

Petittlerc Sid Souky VG-86

3rd Junior 2-year-old, Three Rivers 2017
Nom. All-American Spring Calf 2015
Nom. All-Canadian Spring Calf 2015
3rd Spring calf, Int'l Holstein Show 2015
4th Spring Calf, Royal Winter Fair 2015

Petittlerc Doorman Satina

Junior Champion, WI Dist 1 Holstein Show 2017
Junior Champion, WI Dist 1 Holstein Show 2016
Junior Champion, Midwest Fall National Jr Show 2016

From the Same Family:

Petittlerc Sid Sunkiss EX-95

Nom. All-American & All-Canadian 5-Year-Old 2016
Res. All-American 2013 & HM All-American 2015

3rd Dam:

Brabantdale Triumphant Spooky EX-2E-CAN 54*

4-02 3 365 51625 4.4 2297 3.4 1764
6-00 3 365 49976 5.6 2780 3.1 1537
LIFE 3 lacs 173683 4.4 7721 3.3 5681
10 EX & 30 VG daughters
Over 100 EX & VG granddaughters
2nd cow in the World to reach 50*



Silvermaple Damion Camomile EX-95

Grandam of Lots 46A & 46B

LOT 46A: FURNACE-HILL CRSH CANDYCANE

Born 5/30/2017 Reg. 840003143705055 99%-I TL TD
 GTPI +1986 (8/2017)
 PTA +3.99T +2.55UDC +2.55FLC
Awesome Sire Stack! Crush x Atwood x Damion x Goldwyn

LOT 46B: FURNACE-HILL CANDY CRUSH-ET

Born 4/3/2017 Reg. 840003143705013 99%
 GTPI +1929 (8/2017)
 PTA +4.31T +2.83UDC +2.57FLC
 #3 PTAT Heifer of the Breed 8/2017
Big-Time Genomics from a Proven Show Cow Family!

Consigned by:
 Joel Krall
 717-821-0886

MAVERICK CRUSH 12042760C 99%-I TV TL TY TD

GTPI +2273
 PTA -156M +10F +11P 79%R 8/2017
 PTA +359NM +0.06%F +0.06%P 100%US
 PTA +5.3PL 2.33SCS +1.0DPR 6.0%DCE
 PTA +3.83T +2.75UDC +2.04FLC 78%R 8/2017

BUTLVIEW ATW CHEYENNE-ET 3125945021

GTPI +1666
 PTA +3.77T +2.68UDC +2.71FLC 78%R 8/2017
Fresh in May & will be scored in October

VAL-BISSON DOORMAN-ET 107281711C 99%-I TV TL TY TD

GTPI +2301
EDG CLAIRE CLING-ET 71494758
 VG-85-2Y-CAN GTPI +2228
 2-00 2 365 28929 4.7 1369 3.5 1003

MAPLE-DOWNS-I G W ATWOOD-ET 8956379C TV TL TY TD

EX-90 EE+V 4-06 GTPI +1870
SILVERMAPLE DAMION CAMOMILE 9732453C
 EX-95 EEEEE 5-07
 3-03 2 365 32268 4.1 1327 3.6 1159
 5-02 2 305 30450 4.1 1262 3.3 1003
 LIFE 1536 130677 4.2 5506 3.5 4555
*All-Canadian Junior 2 & Junior 3-Year-Old
 All-American Junior 2 & Junior 3-Year-Old
 Grand Champion, BC Spring Show 2012
 Int. Champion, Royal Winter Fair 2011
 Int. Champion, International Show 2011
 Res. Grand Champion, International Show 2011*

Camomile Daughters:

Silvermaple Bolton Cameo EX-94
 4-03 2 365 27780 3.8 1438 3.4 1272
Silvermaple Windham Camille EX-92
 Res. Grand Champion, IN State Fair 2017
 Supreme Champion, WDE Junior Show 2016
Butlview Doorman Class EX-91
 Int & Res. Grand Champion, WI State Jr Show 2017
Butlview Door Camilla EX-92
 Int & Grand Champion, IN State Show 2017

3rd - 4th Dams:

Stanhope Camila Goldwyn-ET EX-90-CAN 1*
 4-01 2 365 30461 4.9 1486 3.3 1010
 LIFE 6 lacs 139205 4.9 6799 3.4 4793
Kendu Triumphant Charity EX-93 *3
 3-04 2 365 28519 3.7 1065 3.1 888
 4-09 2 244 24356 3.6 882 3.1 758
*HM Grand Champion Vancouver Island 2006
 3rd 4-Year-Old Cow Saskatoon Expo 2005
 3rd 4-Year-Old Cow Central Fraser Valley 2005*



Ms Apple Anara-Red-ET
Dam of Lot 47

LOT 47: KCCK ANARA BYWAY ADELE-ET *RC

Born 6/17/2017 Reg. 840003141240913 RC
GTPI +2082 (8/2017)
PTA +3.85T +3.40UDC +2.35FLC
Doorman & McCutchen-free pedigree!
#1 *RC Byway in the Breed (8/2017)

Consigned by:
KCCK
563-920-6084

OH-RIVER-SYC BYWAY-ET 71310557 TV TL TY TD
GTPI +2040
PTA +925M +4F +19P 90%R 8/2017
PTA +166NM -0.11%F -0.03%P 26%US
PTA +0.8PL 2.94SCS -0.9DPR 6.2%DCE
PTA +3.75T +3.39UDC +1.30FLC 84%R 8/2017

MS APPLE ANARA-RED-ET 3131999864
GTPI +2208
PTA +3.18T +3.08UDC +2.60FLC 77%R 8/2017
Promising heifer due next Spring
Made like Apple!

SULLY HART MERIDIAN-ET 69951907 TY TD
GTPI +2348
SANDY-VALLEY ATWD BARBIE-ET 69250651
EX-91
2-04 3 365 32120 3.5 1118 3.1 1010

BLONDIN INTEGRAL RC 108109390
GTPI +2248
KHW REGIMENT APPLE-RED-ET 135511521 CV
EX-96 EEEEE 3E 9-06 DOM 16*
9-01 2 365 36750 4.3 1582 3.5 1280
4-01 2 365 35750 4.7 1682 3.7 1314
7-00 2 365 33280 5.0 1654 3.6 1191
LIFE 2898 240640 4.7 11394 3.6 8559
Res. All-American R&W 125,000 Lb Cow 2014
Res. Grand Champion, Int'l R&W Show 2013
All-American R&W 125,000 Lb Cow 2013
Red & White Cow of the Year 2013

3rd - 8th Dams:
Kamps-Hollow Altitude-ET RC 2E-95 DOM
7-00 2 365 39690 4.7 1849 3.5 1385
LIFE 1844 144460 4.4 6295 3.7 5288
Clover-Mist Alisha-ET RC 3E-93 DOM
5-03 3 365 34670 4.8 1654 3.5 1220
LIFE 2999 226470 4.7 10659 3.6 8149
Clover-Mist Augy Star-ET 4E-94 DOM
7-10 2 365 43140 5.0 2136 3.1 1339
LIFE 2274 196240 4.8 9349 3.3 6458
D-R-A August 4E-96 DOM
8-05 3 365 27460 4.3 1187 3.2 871
LIFE 3433 190200 4.4 8281 3.5 4818
D-R-A Ideal Precious Leader 2E-90 EX-MS
7-06 2 358 20090 3.9 787 3.2 637
LIFE 2456 133250 4.0 5308
D-R-A Princess Lad Leader 3E-90
9-05 2 305 19160 4.2 809



KHW Regiment Apple-Red-ET 3E-96 DOM
 Dam of Lot 48

LOT 48: IVF SESSION X APPLE

Your chance to buy a mating of your choice directly from Apple!

Make your own show winner!!

Minimum 8 transferrable embryos

Consigned by:
 Apple Partners
 815-275-4990

MUTUALLY AGREEABLE SIRE

KHW REGIMENT APPLE-RED-ET 135511521 CV

EX-96 EEEEE 3E 9-06 DOM 16*

9-01 2 365 36750 4.3 1582 3.5 1280
 4-01 2 365 35750 4.7 1682 3.7 1314
 7-00 2 365 33280 5.0 1654 3.6 1191
 LIFE 2898 240640 4.7 11394 3.6 8559

Res. All-American R&W 125,000 Lb Cow 2014

Res. Grand Champion, Int'l R&W Show 2013

All-American R&W 125,000 Lb Cow 2013

Red & White Cow of the Year 2013

POL BUTTE MC BEEMER-ET 7525863C

GTPI +2064

KAMPS-HOLLOW ALTITUDE-ET 129136431 RC CV

TL

EX-95 EEEEE 2E DOM 2*

7-00 2 365 39690 4.7 1849 3.5 1385
 4-03 2 365 30430 4.2 1267 3.3 1013
 2-00 2 365 28830 3.8 1097 3.7 1067
 LIFE 1844 144460 4.4 6295 3.7 5288

All-American R&W Produce of Dam 2014

Altitude's sons:

KHW Kite Advent-Red-ET EX-94

KHW Elm-Park Acme-ET *RC EX-90 GM

3rd - 7th Dams:

Clover-Mist Alisha-ET RC 3E-93 DOM

5-03 3 365 34670 4.8 1654 3.5 1220
 LIFE 2999 226470 4.7 10659 3.6 8149

Clover-Mist Augy Star-ET 4E-94 DOM

7-10 2 365 43140 5.0 2136 3.1 1339
 LIFE 2274 196240 4.8 9349 3.3 6458

D-R-A August 4E-96 DOM

8-05 3 365 27460 4.3 1187 3.2 871
 LIFE 3433 190200 4.4 8281 3.5 4818

D-R-A Ideal Precious Leader 2E-90 EX-MS

7-06 2 358 20090 3.9 787 3.2 637
 LIFE 2456 133250 4.0 5308

D-R-A Princess Lad Leader 3E-90

9-05 2 305 19160 4.2 809



KHW Regiment Apple-Red-ET 3E-96 DOM
Grandam of Lot 49

LOT 49: WESTCOAST ORION ARYANE 4727

Born 9/19/2016 Reg. 12589050C 99%RHA
 GTPI +2233 (8/2017)
 PTA +803M +38F +23P
 PTA +302NM +0.03%F +0.00%P
 PTA +1.0PL 2.95SCS -1.6DPR 5.6%DCE 7.9%SCE
 PTA +4.06T +3.51UDC +2.02FLC
#1 PTAT Orion in the Breed
High Milk, High Type Apple
Sells Ready to Flush

Consigned by:
 Westcoast Holsteins
 604-799-6376

PROGENESIS ORION-ET 19319190C 99%-I TV TL TYTD

GTPI +2545
 PTA +1774M +57F +41P 78%R 8/2017
 PTA +643NM -0.03%F -0.04%P 100%US
 PTA +5.6PL 2.71SCS +0.9DPR 4.8%DCE
 PTA +3.22T +2.71UDC +1.62FLC 77%R 8/2017

MS APPLE ARYANE-ET 3126918503

VG-88-2Y-CAN VG-MS GTPI +1988
 PTA +4.10T +3.08UDC +3.02FLC 78%R 8/2017
 2-00 2 162 10840 3.9 421 3.2 342 Inc
Former #1 Type Heifer in the World!
One of the most talked about Jr. 2 in the world
Sold for \$67,000 2015 World Classic

MORNINGVIEW MCC KINGBOY-ET 72044077 99%-I TV TL TYTD

EX-92 GTPI +2506
EDG DAHLIA MOGUL 2257-ET 72437804
 GP-84-2Y-CAN GTPI +2436
 2-06 2 365 38889 3.3 1272 3.0 1160

CARROUSEL REGIMENT-RED-ET 128891296 TV TL

VG-85-3YR-CAN
KHW REGIMENT APPLE-RED-ET 135511521 CV
 EX-96 EEEEE 3E 9-06 DOM 16*
 9-01 2 365 36750 4.3 1582 3.5 1280
 4-01 2 365 35750 4.7 1682 3.7 1314
 7-00 2 365 33280 5.0 1654 3.6 1191
 LIFE 2898 240640 4.7 11394 3.6 8559
Res. All-American R&W 125,000 Lb Cow 2014
Res. Grand Champion, Int'l R&W Show 2013
All-American R&W 125,000 Lb Cow 2013
Red & White Cow of the Year 2013

3rd - 8th Dams:

Kamps-Hollow Altitude-ET RC 2E-95 DOM
 7-00 2 365 39690 4.7 1849 3.5 1385
 LIFE 1844 144460 4.4 6295 3.7 5288
Clover-Mist Alisha-ET RC 3E-93 DOM
 5-03 3 365 34670 4.8 1654 3.5 1220
 LIFE 2999 226470 4.7 10659 3.6 8149
Clover-Mist Augy Star-ET 4E-94 DOM
 7-10 2 365 43140 5.0 2136 3.1 1339
 LIFE 2274 196240 4.8 9349 3.3 6458
D-R-A August 4E-96 DOM
 8-05 3 365 27460 4.3 1187 3.2 871
 LIFE 3433 190200 4.4 8281 3.5 4818
D-R-A Ideal Precious Leader 2E-90 EX-MS
 7-06 2 358 20090 3.9 787 3.2 637
 LIFE 2456 133250 4.0 5308
D-R-A Princess Lad Leader 3E-90
 9-05 2 305 19160 4.2 809



Farnear-TBR Aria Adler EX-91 EX-MS

Dam of Lot 50

LOT 50: *MALE* FARNEAR ARIA ADDISON EWL-ET *RC

Born 3/29/2017 Reg. 840003143160110 RC 99%RHA-I

GTPI +2173 (8/2017)

PTA +3.77T +2.88UDC +2.08FLC

#4 PTAT RC Bull of the breed!

#1 PTAT RC Crush of the breed!

Contact Sale Management for Share Information

Housed at Donna Mertz DVM, Blair, NE - 920-382-7678

Consigned by:
Eric W. Lang and Dr. Donna Mertz
641-990-6977
ericwlang@hotmail.com

MAVERICK CRUSH 12042760C 99%-I TV TL TY TD

GTPI +2273

PTA -156M +10F +11P 79%R 8/2017

PTA +359NM +0.06%F +0.06%P 100%US

PTA +5.3PL 2.33SCS +1.0DPR 6.0%DCE

PTA +3.83T +2.75UDC +2.04FLC 78%R 8/2017

VAL-BISSON DOORMAN-ET 107281711C 99%-I TV

TL TY TD

GTPI +2301

EDG CLAIRE CLING-ET 71494758

VG-85-2Y-CAN GTPI +2228

2-00 2 365 28929 4.7 1369 3.5 1003

FARNEAR-TBR ARIA ADLER 72437575 RC

99%RAH-I

EX-91 EEEVE 4-06 GTPI +2161

PTA +3.25T +2.77UDC +2.07FLC 82%R 8/2017

2-03 2 365 32440 5.0 1609 3.4 1107

3-11 2 196 26604 4.8 1276 3.1 814 Inc

1st Junior 2-year-old, IA State Fair 2015

1st 4-year-old, IA State Junior Show 2017

Maternal sister:

Golden-Oaks M AtInta-Red-ET

#1 Red Type heifer of the breed @ +4.00 T

DE-SU BKM MCCUTCHEN 1174-ET 69990138 99%

EX-93 EEEE 4-10 GM GTPI +2355

MS APPLES ARIA-ET RC 69822241 TV

EX-92 VEEVE 2E 6-03 GTPI +1903

PTA +2.98T +2.65UDC +1.97FLC 83%R 8/2017

3-10 3 312 29830 4.8 1444 3.6 1075

5-07 3 365 26000 4.7 1221 4.0 1030

2-01 3 365 24410 4.9 1200 4.1 990

3rd - 4th Dams:

KHW Regiment Apple-Red-ET 3E-96 DOM

9-01 2 365 36750 4.3 1582 3.5 1280

LIFE 2898 240640 4.7 11394 3.6 8559

Res. All-American R&W 125,000 Lb Cow 2014

Res. Grand Champion, Int'l R&W Show 2013

All-American R&W 125,000 Lb Cow 2013

Red & White Cow of the Year 2013

Kamps-Hollow Altitude-ET RC 2E-95 DOM

7-00 2 365 39690 4.7 1849 3.5 1385

LIFE 1844 144460 4.4 6295 3.7 5288

All-American R&W Produce of Dam 2014

Red Impact Cow of the Year 2009

Clover-Mist Alisha-ET RC 3E-93 DOM

5-03 3 365 34670 4.8 1654 3.5 1220

LIFE 2999 226470 4.7 10659 3.6 8149

Clover-Mist Augy Star-ET 4E-94 DOM

7-10 2 365 43140 5.0 2136 3.1 1339

LIFE 2274 196240 4.8 9349 3.3 6458

D-R-A August 4E-96 DOM

8-05 3 365 27460 4.3 1187 3.2 871

LIFE 3433 190200 4.4 8281 3.5 4818

D-R-A Ideal Precious Leader 2E-90 EX-MS

7-06 2 358 20090 3.9 787 3.2 637

LIFE 2456 133250 4.0 5308

D-R-A Princess Lad Leader 3E-90

9-05 2 305 19160 4.2 809

Notes



INTERNATIONAL OPPORTUNITY SALE

Females

A-L-H GS JED HAZEL 36713-ET	15
AUGUSTINIAN DELTA DAWN-ET	21
BGP DELTA HONEY 2-ET	7
BGP DELTA HONNA-ET	8
BOZLAND MODESTY 37135-ET	27
CAL-ROY-AL JUDY 4734-ET	6
FURNACE-HILL CANDY CRUSH-ET	46B
FURNACE-HILL CRSH CANDYCANE	46A
GENOSOURCE 40556 ROMANCE-ET	2
GENOSOURCE FRZ REMI-ET	39B
GENOSOURCE FRZ REMINISCE-ET	39A
GENOSOURCE MD MAYA 36737-ET	36
GENOSOURCE ROME 36549-ET	16
GENOSOURCE ROYAL 40055-ET	1
IVF SESSION X KHW REGIMENT APPLE-RED-ET	48
IVF SESSION X SANDY-VALLEY NO LIMIT-ET	9
KCCK ANARA BYWAY ADELE-ET *RC	47
KCCK ANGIES AMAZON-ET *RC	25
MS 9882 FRAZZLED 4310-ET	31
MS 9882 FRAZZLED 4316-ET	30
MS BRODY JOSPR 32051-ET	24
MS MODESTY CANTO 410	23
MS TJR EXTRM DTR 40027-ET *RC	35
NO-FLA GS DELTA 4342-ET	33
NO-FLA GS DELTA 4344-ET	34
NO-FLA GS M NAOMI 31026-ET	32
PINE-TREE 6809 FLAG 7463-ET	26
PINE-TREE 7019 OUTL 7549-ET	19D
PINE-TREE 7019 OUTL 7563-ET	19B
PINE-TREE 7019 OUTL 7565-ET	19C
PINE-TREE 7019 OUTL 7569-ET	19A
PINE-TREE JEDI 9882FARIA-ET	18

RICHMOND-FD MM DETAIN-ET	20
RICKLAND MODESTY 6210-ET	22
SEAGULL-BAY AN ALEXANDRA-ET	4
SHEAOLA JEDI 6066-ET	13B
SHEAOLA JEDI 6071-ET	13A
SIMPLE-DREAMS 4825 F2751-ET	3
T-SPRUCE 11109	29
T-SPRUCE 111970	28
TERRA-LINDA DANICA-ET	17
TJR FRAZZLED DATE 80114-ET	37
TJR JEDI REMEMBER ME-ET	11
TJR SWEET BABY RAE-ET	10
TRES-REYNAS FORTUNE 4337	38
TRIPLECROWN-AL JD JEWEL-ET	5
TTM ACHIEVER SECRET-ET	12
VICTORIA DELTA COCO	14
WESTCOAST ORION ARYANE 4727	49

Embryos

AVALANCE X PETITCLERC GOLDWYN SILVER	45
AVALANCHE X STARMARK AD HOTSTUFF-RED	43
DIAMONDBACK X WESTCOAST ABSOLUTE	
ROULETTE-RED	44
KENNEDY X GENOSOURCE DELTA 33940	42
KENNEDY X GENOSOURCE DRUBY 32513-ET	40
KENNEDY X GENOSOURCE-I JEDI MARLA	41

Male

FARNEAR ARIA ADDISON EWL-ET *RC	50
---------------------------------	----

Livestock Mortality Insurance

MERRY RAMA INSURANCE

4236 County Highway 18, Delhi, NY 13753

Ph: (607) 746-2226 ~ Fax: (607) 746-2911

E-mail: merryrama@cattlexchange.com

www.cattlexchange.com

*Remove and Hand to Company Representative
Application For Insurance with American Livestock Insurance Company*

I/We _____
of _____
Address City State Zip Code Telephone

hereby apply for insurance against loss by death resulting from disease or accidental injuries for the term of _____, on the following described animal(s).

This is not a Binder until accepted by Insurance Company Representative

Lot	Name of Animal	Registration and/or Tattoo Number	Breed Sex	Birthdate	Purchase Price	Amount of Insurance	Rate	Premium
					Purchase Date			

Dairy Cattle Rates

Calves	Annual	1 Month	3 Months	6 Months
2 weeks to 7 weeks of age.....	12.0%	4.8%	7.2%	8.0%
7 weeks to 3 months of age.....	10.0%	4.0%	6.0%	6.7%
Bulls				
Up to 6 years of age.....	6.0%	2.4%	3.6%	4.0%
7 years.....	7.0%	2.8%	4.2%	4.7%
8 years.....	8.0%	3.2%	4.8%	5.3%
Cows				
Up to 5 years of age.....	8.0%	3.2%	4.8%	5.3%
6 years.....	9.0%	3.6%	5.4%	6.0%
7 years.....	10.0%	4.0%	6.0%	6.7%

~Minimum Policy Premium is \$100.00

This is not a Binder until accepted by Insurance Company Representative



HOLSTEIN ASSOCIATION TERMS AND CONDITIONS FOR PUBLIC SALES

EFFECTIVE MARCH 2, 1996 - Amended October 1, 1997, June 28, 2000, June 23, 2002, March 26, 2010 and March 24, 2016

TERMS: The terms of the sale are cash unless arrangements are made prior to the sale or are printed in the sale catalog. Only when the above conditions are met will the buyer be entitled to the warranties listed below. In no case will animals be released unless settlement is made with the clerk of the sale.

RESPONSIBILITY: The seller, buyer, and manager of this sale are obligated to comply with the provisions of these terms and conditions.

EXPORT SALES: Buyer assumes all responsibility for health tests required by the importing country.

BIDS: The highest bidder is the buyer. Bidding parties or their agents are responsible for all bids placed. Every animal or lot presented for bidding is pledged to absolute sale. In case of dispute, the animal or lot will again be put up for advance bids, and if there is no advance bid, the animal or lot will be sold to the person the auctioneer accepted the last bid from. In case two or more claim the bid, the auctioneer will indicate the party whose bid he recognized. Other claimants will be given an opportunity to increase the bid and bidding will be restricted to the two or more claimants.

BY-BIDDING: Bidding directly or indirectly by the sole owner of any animal or lot is prohibited unless the intention to bid is disclosed specific to each animal in the catalog and announced when the animal enters the ring. Bidding by any member of a partnership, syndicate, or other entity having an ownership interest in an animal or lot is permitted.

TRANSFER OF OWNERSHIP: For all Registered HolsteinsSM, the transfer of ownership to the buyer will be recorded on the records of Holstein Association USA and a certificate of registration showing that transfer of ownership will be provided to the buyer free of charge. For embryos, the transfer of ownership to the buyer will be recorded on the records of Holstein Association USA free of charge to the buyer.

RISK: All animals located at sale site are at the purchaser's risk as soon as struck off, but will be cared for free of charge for a maximum of 24 hours following the end of the sale.

WARRANTIES:

- 1) Each consignor warrants clear title to the animal or lot, and the right to sell same.
- 2) To the best of the seller's knowledge, each animal is sound and healthy in every respect and embryos have been recovered, processed, frozen, transferred and graded in keeping with IETS recommendations unless otherwise noted in the catalog or announced from the auction stand. Every precaution will be taken to represent the physical condition of each lot exactly as is known. Examination of all purchases should be made immediately after the purchase and before the close of the sale, and if found not to be as represented, complaint must be reported to the sale management before the close of the sale. In the event no complaint is filed, it is understood that the buyer assumes full ownership in the case of animals at sale site together with all risks, after which no representations of the seller can be challenged through the sale management. Heifers that never calved are in no way guaranteed as to the condition of their udders following calving. The sex of an embryo or fetus is in no way guaranteed.

3) Breeding Warranty

The seller guarantees all animals to be breeders, but not beyond the purchase price, with the following understanding:

- a. Males - Should any bull after reaching the age of fourteen months fail to prove a breeder after being used for two months on cows or heifers known to be breeders, the matter shall be reported in writing to the seller within three months of the sale date. The report must include the animal's examination record, a written statement of treatment, and a statement of the animals' inability to breed,

by a licensed veterinarian. The seller has the option to refund the purchase price or make other settlement that is satisfactory to the buyer. In either case the rights of ownership of the animal return to the seller. The seller makes no guarantees with respect to the ability to freeze semen.

- b. Females - All females are guaranteed to be breeders with the exception of:
 1. Cows over 7 years of age when sold;
 2. Cows and/or heifers carrying a pregnancy that is the result of an embryo transfer.

Report of a non-breeder must occur in writing within 3 months of the date of sale or before the animal reaches 21 months of age and must be submitted to the seller. The report must include the animal's examination record, a written statement of treatment, and a statement of the animals' inability to breed, by a licensed veterinarian. The seller has the option to refund the purchase price or make other settlement that is satisfactory to the buyer. In either case the rights of ownership of the animal return to the seller.

Females bred when sold and pronounced in calf are presumed to be pregnant but pregnancy is not guaranteed unless so announced. The seller makes no warranty that pregnant cows will deliver calves or that they will carry calves full term.

- c. If, after the sale, embryos or oocytes are recovered from a female or an attempt is made to superovulate her, this negates the breeding warranty unless there is a separate written agreement between buyer and seller.

SHIPPING: Assistance will be given in arranging shipping of the animals after the sale. All costs, risks and responsibility will be borne by the purchaser.

PEDIGREE INFORMATION: All production, classification, type and production summaries are current. Only information recorded on Holstein Association USA pedigrees is used. Any production or classification records supplied by the seller or consignor will be properly identified as provided by owner. Records in progress are identified as such.

GENOMIC INFORMATION: If genomic information on the animal or embryo is available, it must be dated and disclosed at or before the time of sale.

EMBRYO TRANSFER: All registered animals that have resulted from embryo transfer are identified with one of the following suffixes in the name: ET, ETS (from split embryo), or ETN (from nuclear transfer). If unregistered, the appropriate technology will be identified. Donor dams are identified.

HEALTH WARRANTY: The seller will provide an official health certificate to the buyer for each animal showing the results of all health tests made in preparation for this sale as required by the state where the cattle reside. Other health tests completed for this sale will be disclosed.

ERRORS: The material in this catalog has been carefully edited. If any errors or omissions are discovered, they will be announced. Such announcements take precedence over that printed in this catalog.

ACCIDENT: The sale management, the consignors, and the owner of the grounds will not be responsible in any case for the condition of the grounds or the behavior of the animals and disclaim any liability in the event of personal accident or property loss.

LIMITATIONS OF WARRANTIES: Warranties contained herein, unless terminated earlier, will cease upon the resale of an animal.

LIVE INTERNET BIDDING AT www.cowbuyer.com



- View/bid online in Real Time
- Registration is required. Please register at least one (1) hour prior to sale time at www.cowbuyer.com
- High Speed Internet is required. Slower speed will not permit you to bid and keep pace in real time.
- Terms: Purchasing online constitutes a legal contract and promise for payment of purchases. All purchases must be paid within ten (10) days of sale date and prior to load out or delivery of cattle purchased.
- Cowbuyer.com is a service provider and is not responsible for the activity or inactivity of any technology, internet connection at the sale site or connection and technology of the bidders.
- For iPad, iPhone or android users be sure to download the COWBUYER App to utilize mobile bidding.

For questions or information, contact:

Aaron Ray Tompkins – 336/363-4639, atompkin@vt.edu



GenoSource

YOUR LEADING

GENETIC

SOURCE



MISS OCD ROBST

DELICIOUS

DAM OF

DELTA • DENVER • DION • DRACO

WWW.GENOSOURCE.COM

